

Asia's Transformations to Sustainability:

Past, Present and Future of the Anthropocene

March **10-11**, 2017

Lecture Hall,
Research Institute for
Humanity and Nature

Kyoto, Japan

Language

English

Keynote Address



Anthropocene and
Transhumanism

Augustin Berque

École des hautes études en sciences
sociales (EHESS), France



Does Chinese History
Suggest a Sustainable
Growth Trajectory?

Kenneth Pomeranz

University of Chicago, USA

Session 1

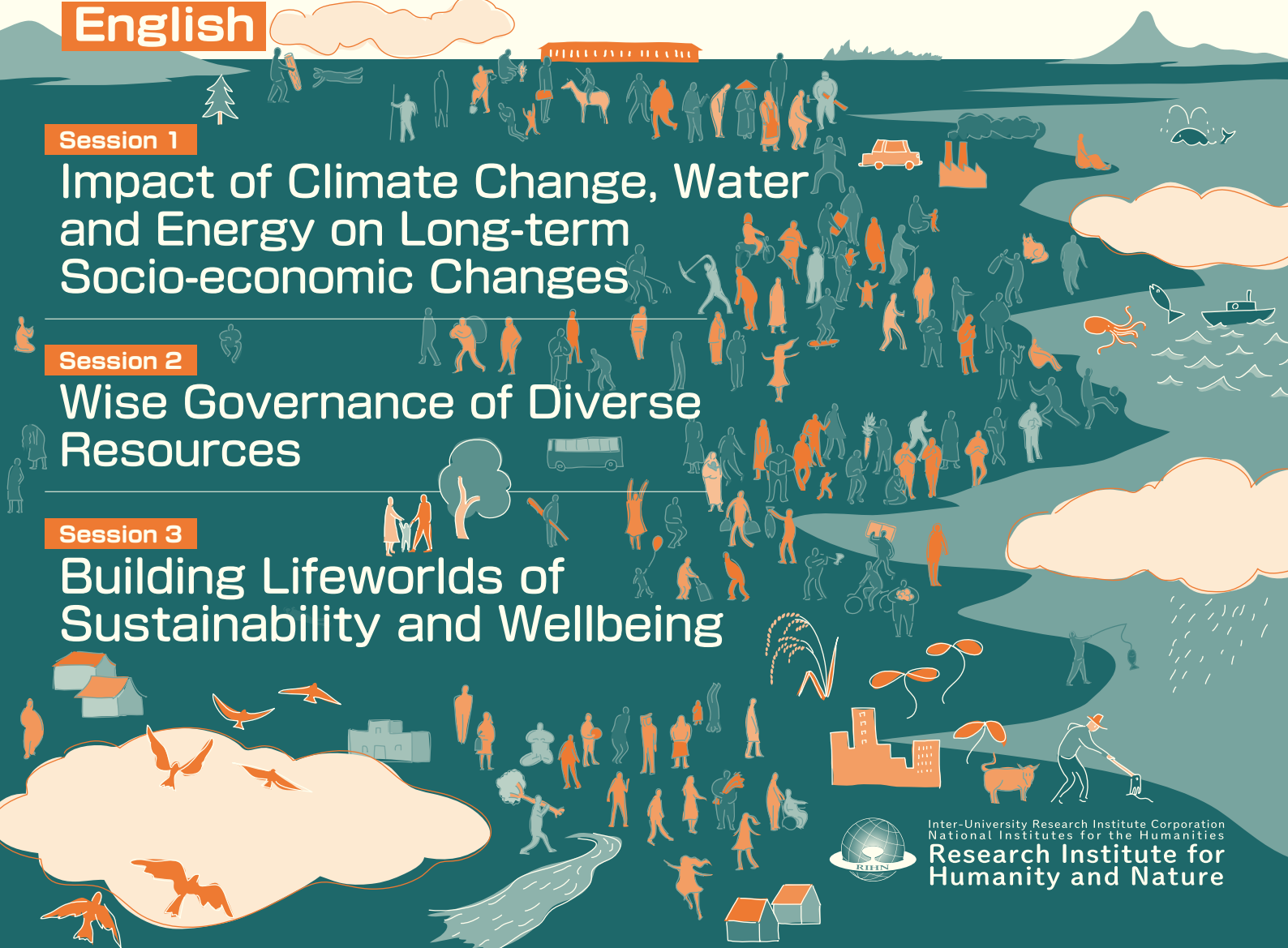
Impact of Climate Change, Water
and Energy on Long-term
Socio-economic Changes

Session 2

Wise Governance of Diverse
Resources

Session 3

Building Lifeworlds of
Sustainability and Wellbeing





Asia's Transformations to Sustainability: Past, Present and Future of the Anthropocene

Friday - March 10, 2017

Plenary Session



Keynote Address 1

Anthropocene and Transhumanism

Augustin Berque (École des hautes études en sciences sociales (EHESS), France)



Keynote Address 2

Does Chinese History Suggest a Sustainable Growth Trajectory?

Kenneth Pomeranz (University of Chicago, USA)

Session 1

Impact of Climate Change, Water and Energy on Long-term Socio-economic Changes

Impact of Climate Change on Social Transformations in Japan and Beyond

Takeshi Nakatsuka (RIHN)

On Climate, Demography and Social Change in the Japanese Archipelago

Osamu Saito (Hitotsubashi University)

Monsoon Asia, Industrialization and Urbanization: The Making and Unmaking of the Regional Nexus

Kaoru Sugihara (RIHN)

Carbon Forests and Rivers of Conflict: Reflections on South Asian Environmental History in the Epoch of the Anthropocene

Rohan D'Souza (Kyoto University)

Land Tenure and Degradation of Peatlands in Sumatra, Indonesia

Kosuke Mizuno (RIHN and Kyoto University)

Roundtable Discussion

The above speakers, Mark Metzler (University of Texas at Austin, USA), Takahiro Sato (Kyoto University), Kohei Wakimura (Osaka City University), and Roy Bin Wong (University of California, Los Angeles, USA)

Saturday - March 11, 2017

Session 2

Wise Governance of Diverse Resources

Concept of Wise Governance of Resources and Ecosystem Services in Asian context

Tohru Nakashizuka (RIHN and Tohoku University)

Evidence-based Deliberation for Some Issues in Local Nexus Structure: Some Participatory Approaches towards Adaptive Governance

Kenshi Baba (Tokyo City University)

Considering Ecosystem Service Tradeoffs including Biodiversity and Culture in the Water-energy-food Nexus

Kimberly Burnett (University of Hawaii, USA)

The Adaptive Watershed Governance: Biodiversity, Nutrient Cycling and Human Well-being

Noboru Okuda (RIHN)

Valuing Forest Ecosystem Services and Disservices - Case Study of a Protected Area in India

Karachepone N. Ninan (Centre for Economics, Environment and Society, India)

Roundtable Discussion

The above speakers

Session 3

Building Lifeworlds of Sustainability and Wellbeing

Program 3 and Future Design

Tatsuyoshi Saijo (RIHN and Kochi University of Technology)

Seeking Sustainability through Asian Values and Culture

Rakesh Kapoor (Alternative Futures, India)

Lifeworlds as Pedagogy for Socio-cultural Change: Sensuous Food Futures, Practices, and Meaning in Everyday Experience

Steven McGreevy (RIHN)

Sanitation Value Chain: Its Concept and Element Technologies

Naoyuki Funamizu (RIHN and Hokkaido University)

Roundtable Discussion

The above speakers, Ueru Tanaka (RIHN) and Satoshi Ishikawa (RIHN)

General Discussion

Session summaries and discussion across all sessions

Research Institute for Humanity and Nature [RIHN]

457-4 Motoyama, Kamigamo, Kita-ku, Kyoto, 603-8047, Japan
Tel. 81-75-707-2152 Fax. 81-75-707-2106
<http://www.chikyu.ac.jp/>

By City Subway and Kyoto Bus

From Kyoto Station, take the Karasuma Line to Kokusaikaikan Station (the last station), and transfer to Kyoto Bus. From Kokusaikaikan Station, take bus No. 40, 52 or 52 to Chikyuken-mae. RIHN is at the base of the hill on your left.

By Eizan Railway

From Demachiyana Station in Kyoto City, take the Kurama Line. Get off at Kyoto-Seikadai-mae Station. RIHN is a 10-minute walk from the station.

By Car, Taxi

From Kyoto International Conference Hall, take Route 40 to Nikenchaya.

