



Inter-University Research Institute Corporation
National Institutes for the Humanities

Research Institute for Humanity and Nature



Research Institute for Humanity and Nature 2008



TACHIMOTO Narifumi
Director-General
Research Institute for
Humanity and Nature

Message from the Director-General

At the Research Institute for Humanity and Nature (RIHN), we believe that so-called global environmental problems are problems of human culture and are seeking a new, fundamental understanding of how man and nature should interact. In studying comprehensively and from a global standpoint the environmental problems that grow increasingly severe as human lifestyles grow ever richer, our aim is to contribute to the building of a society that has futurability. RIHN features a project-based approach to research and has 14 full research projects running at any given time. Based on the results of individual projects, RIHN is endeavoring to develop global environmental studies in line with its aim.

April 2008

Characteristics of RIHN

- 1 Integration** RIHN is developing a new, integrated approach to global environmental issues that involves bringing together knowledge and expertise from a variety of disciplines, including natural sciences, social sciences, humanities, engineering, land and food sciences, and medical sciences.
- 2 International Network** RIHN carries out its research projects in close coordination with both international and domestic research organizations. A number of non-Japanese researchers are involved in each research project.
- 3 Leadership** Staff members at RIHN are expected to play leading roles in global environmental programs through cooperation with national and international research institutes and researchers.
- 4 Fluidity** RIHN adopts a project-based approach that facilitates the participation of researchers from other institutions.



■ Research Projects in Fiscal 2008 (as of April 1, 2008)

Each research project at RIHN begins with an Incubation Study (IS) which, following an internal review, proceeds to the stage of Feasibility Study (FS). The results of this study are then evaluated by the Project Evaluation Committee and, if judged appropriate, the project proceeds to one year of Pre-Research (PR) before beginning the five years of Full Research (FR). The Completed Research (CR) is also evaluated.

CIRCULATION

- FR 4th year Human Activities in North-eastern Asia and Their Impact on the Biological Productivity in North Pacific Ocean (Leader: SHIRAIWA Takayuki)
- FR 3rd year Human Impacts on Urban Subsurface Environments (Leader: TANIGUCHI Makoto)
- FR 2nd year Effects of Environmental Changes on the Interactions between Pathogens and Humans (Leader: KAWABATA Zen'ichiro)
- PR Peoples and Nature in Siberia Associated with Global Warming (Leader: INOUE Gen)
- FS Migration, Sojourn, and Possibilities in Cities (FS Proposer: MURAMATSU Shin)
- FS Research on Regional Diversity of Water Quality: Toward Water Management Based on Circulation (FS Proposer: NAKANO Takanori)

DIVERSITY

- FR 3rd year A New Cultural and Historical Exploration into Human-Nature Relationships in the Japanese Archipelago (Leader: YUMOTO Takakazu)
- FR 1st year Human Life, Aging, and Disease in High-Altitude Environments: Physio-medical, Ecological and Cultural Adaptation in the Three Great "Highland Civilizations" (Leader: OKUMIYA Kiyohito)
- FR 1st year Collapse and Restoration of Ecosystem Networks with Human Activity (Leader: YAMAMURA Norio)

RESOURCES

- FR 2nd year Historical Interactions between the Multi-Cultural Societies and the Natural Environment in a Semi-Arid Region in Central Eurasia (Leader: KUBOTA Junpei)
- FR 1st year Environmental Changes and Infectious Diseases in Tropical Asia (Leader: MOJI Kazuhiko)
- PR A Study of Human Subsistence Ecosystems among Arab Societies: To Combat Livelihood Degradation (Leader: NAWATA Hiroshi)

ECOHISTORY

- FR 3rd year Agriculture and Environment Interactions in Eurasia: Past, Present and Future A Ten-Thousand-Year History (Leader: SATO Yo-ichiro)
- FR 2nd year Environmental Change and the Indus Civilization (Leader: OSADA Toshiki)
- FR 2nd year Neolithisation and Modernisation: Landscape History on East Asian Inland Seas (Leader: UCHIYAMA Junzo)
- FS The Rise and Fall of Mesopotamian Dynasties and its Interactions with the Environment (FS Proposer: WATANABE Chikako)

ECOSOPHY

- FR 5th year Interactions between Natural Environment and Human Social Systems in Subtropical Islands (Leader: TAKASO Tokushiro)
- FR 5th year Interaction between Environmental Quality of the Watershed and Environmental Consciousness: With Reference to Environmental Changes Caused by the Use of Land and Water Resource (Leader: SEKINO Tatsuki)
- FR 2nd year Vulnerability and Resilience of Social-Ecological Systems (Leader: UMETSU Chieko)

Center for Cooperation, Promotion and Communication (CCPC)

From October 2007, the Research Promotion Center was restructured as the Center for Cooperation, Promotion and Communication (CCPC), which has a comprehensive role in supporting and promoting research in global environmental studies and communicating the results of this research. (Director of CCPC: AKIMICHI Tomoya)

Facilities

RIHN aims at elucidating the complex and varied relationships linking humanity and nature. We are seeking to synthesize new approaches that go beyond the existing formal disciplines of natural sciences, social sciences and humanities. Our building is designed with an open-plan layout that encourages all project team members to circulate freely and communicate with any of their colleagues at any time. Built as a broad curving gallery, it literally functions as an international circle.



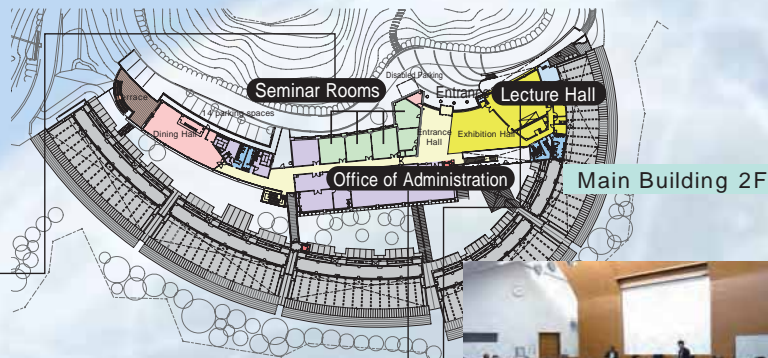
Office of Administration

This complex houses the offices of the Director-General and the Director, as well as the General Affairs Section, the Finance Section and the Research Cooperation Section.



Seminar Rooms

Designed for flexibility with movable partitions, these facilities can accommodate a variety of types and sizes of events from small-audience seminars to large-scale events with around 150 participants.



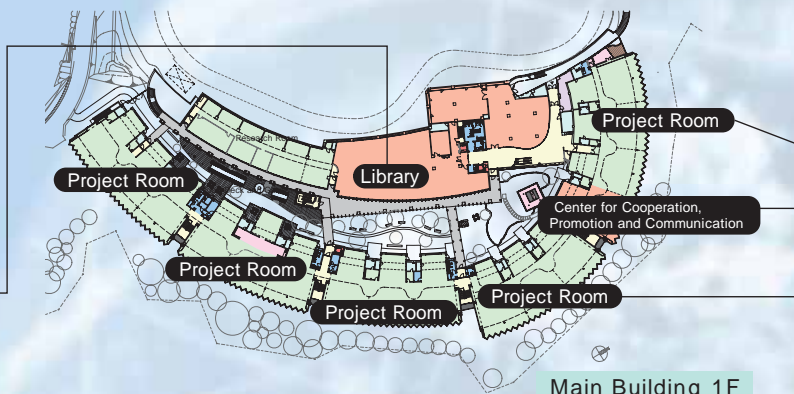
Lecture Hall

This hall holds about 120 people and is equipped with a mobile stage and an audio booth for simultaneous translation.



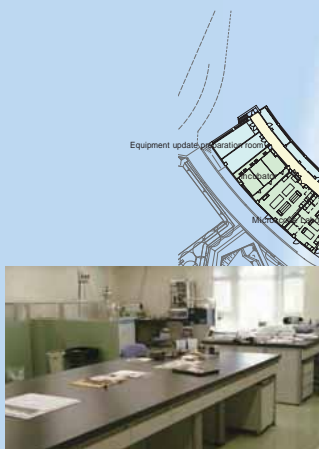
Library

As of March 2008, the library's holdings include approximately 14,000 volumes of books and around 110 journal titles.



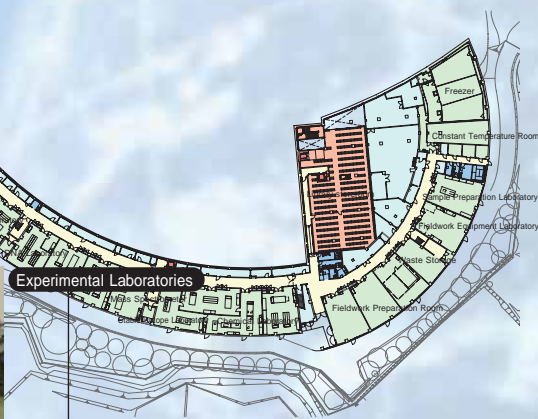
Project Rooms and Center for Cooperation, Promotion and Communication (CCPC)

The spacious first floor of the building accommodates all project areas and the Center for Cooperation, Promotion and Communication (CCPC). Its open-plan layout encourages free circulation by and discussion between researchers.



Experimental Laboratories

RIHN has facilities for conducting a wide range of experimental activities, including an isotope analysis laboratory, DNA analysis laboratory, laboratories for chemical experiments and analysis, a clean room and refrigeration rooms.



Main Building BF



RIHN House

RIHN House is designed to host both long-term stays and brief sojourns by both Japanese and foreign visitors. The house has a communal space designed to foster interaction between guests and RIHN staff members.





Main Events

RIHN 7th Forum

Global Environmental Problems:
Our Responsibilities toward Unseen
People and Unborn Generations
Saturday, July 5, 2008

Location: Room A, Kyoto International Conference Hall

RIHN Public Seminars

We hold 8 public seminars in one year

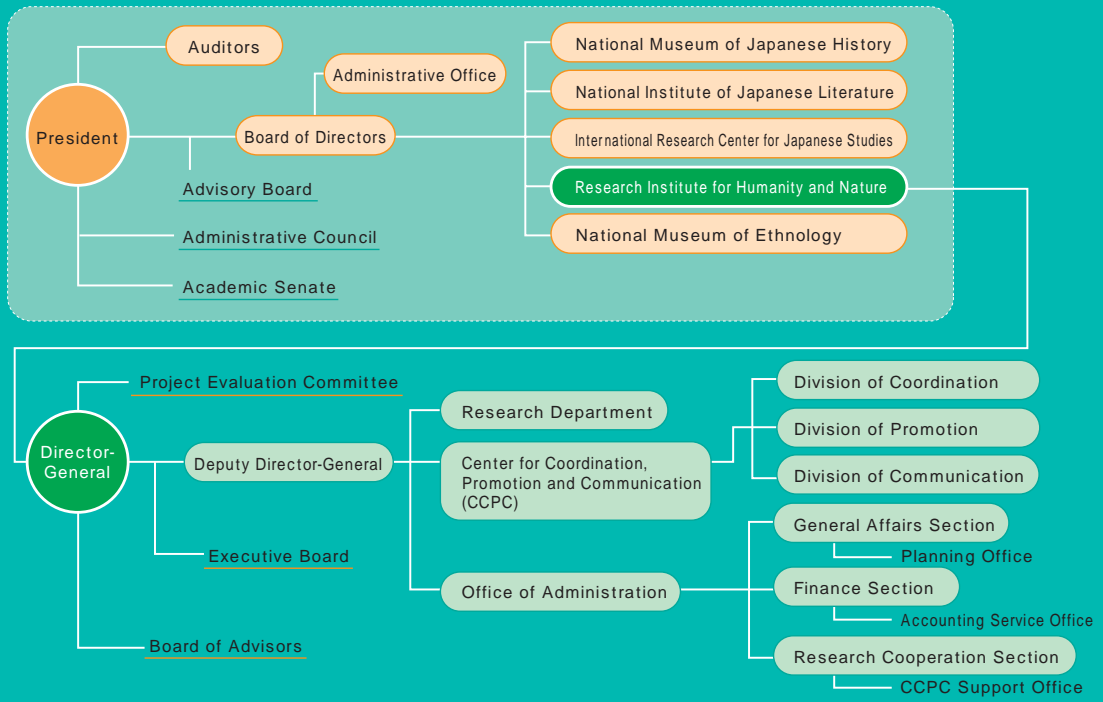
RIHN 3rd International Symposium

Futurability of Islands: Beyond their Endemism
and Vulnerability
October 22-23, 2008

Location: RIHN Lecture Hall

Organizational Chart

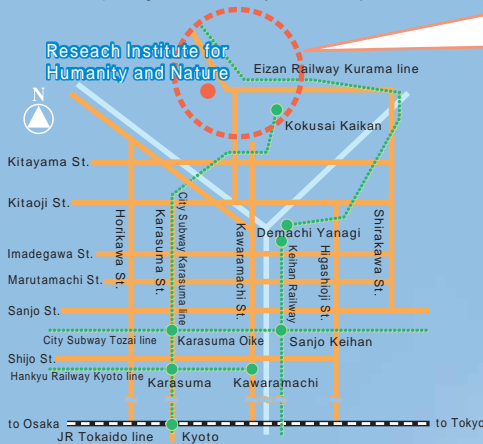
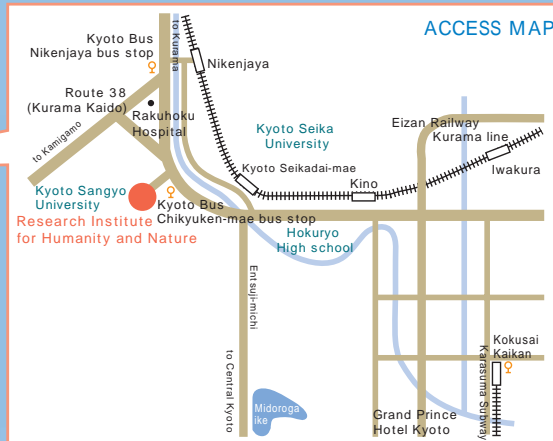
Inter-University Research Institute Corporation, National Institutes for the Humanities



Research Institute for Humanity and Nature

From Demachiyana station, take the Eizan Railway Kurama line to Kyoto Seikadai-mae Station, then turn right and walk for about 10 minutes, or get off at Nikenjaya Station, turn left and walk for about 10 minutes. (Either station has only one exit)

Take the Karasuma subway line to Kokuzaikaikan Station, transfer to a No.40 bus (bound for Ichihara via Kyoto Sangyo Daigaku) or a No.50 bus (bound for Ichihara), and get off at the Chikyuen-mae stop.



457-4 Motoyama, Kamigamo, Kita-ku, Kyoto 603-8047

Tel : +81-75-707-2100 Fax : +81-75-707-2106

URL : <http://www.chikyu.ac.jp>