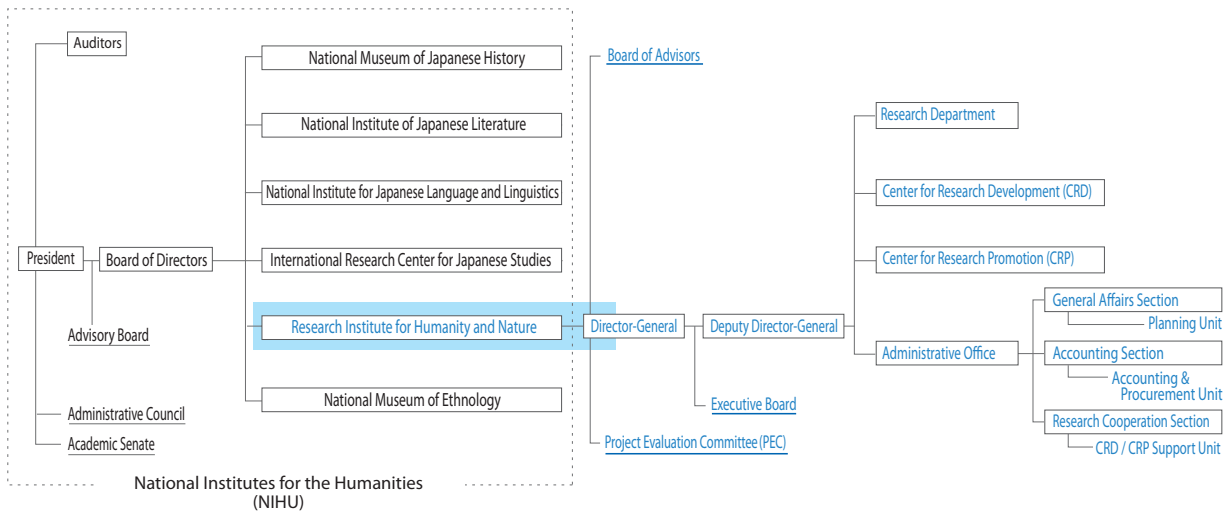


## Administrative Structure



## Financial Information

### Segmental Financial Information (Fiscal Year 2012)

#### Operating Expenses

Category	Amount (Yen in thousands)
Operating Expenses	1,938,282
Inter-University/Joint Research	1,094,987
Outsourced Studies	99,167
Outsourced Operations	44,974
Personnel	699,153
General Management	155,959
Financial Expenses	43,356
<b>Total Expenses</b>	<b>2,137,598</b>

#### Operating Income

Category	Amount (Yen in thousands)
Subsidy for Operation	1,885,514
Contract Operations, etc.	47,883
Donations	10,957
Others	175,448
<b>Total Earnings</b>	<b>2,119,805</b>

Operational Balance 17,793

#### External Sources of Funding

(Fiscal Year 2012)

Category	Amount (Yen in thousands)
Fund for Promotion of Academic and Industrial Collaboration	49,263
Grants-in-Aids for Scientific Research	108,850
Donations for Research	5,848

\* Fund for Promotion of Academic and Industrial Collaboration is the sum of contract research expenses.



# Board and Committees

\*As of April, 2014

## Board of Advisors

Oversees personnel, planning, administration and operation of the institute

<p>FUJIOKA Ichiro President, Kyoto Sangyo University IKEYA Kazunobu Professor, Department of Cultural Research, National Museum of Ethnology KANZAWA Hiroshi Professor, Graduate School of Environmental Studies, Nagoya University KONO Yasuyuki Director, Center for Southeast Asian Studies, Kyoto University</p>	<p>NOE Keiichi President-appointed Extraordinary Professor, Institute of Liberal Arts and Sciences, Tohoku University OTSUKI Kyoichi Professor, Faculty of Agriculture, Kyushu University SUGIHARA Kaoru Professor, National Graduate Institute for Policy Studies WASHITANI Izumi Professor, Graduate School of Agricultural and Life Sciences, the University of Tokyo</p>	<p>KUBOTA Jumpei Deputy Director-General, RIHN Director, CRD, RIHN Program Director, RIHN MALLEE, Hein Program Director, RIHN NAKATSUKA Takeshi Program Director, RIHN SATO Tetsu Deputy Director-General, RIHN Program Director, RIHN TANIGUCHI Makoto Program Director, RIHN</p>
--	--	--

## Project Evaluation Committee (PEC)

External review of research project proposals

### Domestic

KOIKE Isao  
Inspector General, University of the Ryukyus / Professor Emeritus, the University of Tokyo  
KOIKE Toshio  
Professor, School of Engineering, The University of Tokyo  
MIYAZAKI Koji  
Executive Director, Tokyo University of Foreign Studies  
MORIOKA Masahiro  
Professor, School of Humanities and Social Sciences, Osaka Prefecture University  
NAKAMURA Masami  
Professor, Edogawa University / Former Senior Staff Writer, Editorial Bureau, Nihonkeizai Shimbun Inc.  
NAKANISHI Hisae  
Professor, Graduate School of Global Studies, Doshisha University  
WADA Eitaro  
Professor Emeritus, Kyoto University/ Professor Emeritus, Research Institute for Humanity and Nature/  
Professor Emeritus, Siberian Division of the Russian Academy of Science  
YASUOKA Yoshifumi  
External Auditor, Research Organization of Information and Systems

### Overseas

CHEN, Deliang  
Professor, Department of Earth Sciences, University of Gothenburg, Sweden  
CHUN Kyung-soo  
Professor, Department of Anthropology, Seoul National University, Korea  
KLEPPER, Gernot  
Professor, Kiel Institute for the World Economy, Germany  
LAURANCE, William F.  
Distinguished Research Professor and Australian Laureate, James Cook University, Australia  
McDONALD, Anne  
Professor, Graduate School of Global Environmental Studies, Sophia University, Japan  
RANDALL, Roland  
Life Fellow, Girton College, University of Cambridge, UK  
SCHOLZ, Roland  
Professor Emeritus, Natural and Social Science Interface, Institute for Environmental Decisions, Swiss Federal Institute of Technology Zurich, Switzerland  
VAN DER LEEUW, Sander  
Dean, School of Sustainability, Arizona State University, USA

## Executive Board

Oversees administrative operation of the institute

<p>YASUNARI Tetsuzo Director-General KUBOTA Jumpei Deputy Director-General Director, CRD Program Director SATO Tetsu Deputy Director-General Program Director</p>	<p>ABE Ken-ichi Head of Unit, CRP ISHIKAWA Satoshi Head of Unit, CRP MALLEE, Hein Program Director NAKANO Takanori Director, CRP</p>	<p>NAKATSUKA Takeshi Program Director SEKINO Tatsuki Head of Unit, CRP TANIGUCHI Makoto Program Director KAWANO Hiroshi Director, Administrative Office</p>
---	--	---

## Advisor

TACHIMOTO Narifumi

## Emeritus Professor

NAKANISHI Masami  
WADA Eitaro  
HIDAKA Toshitaka  
NAKAWO Masayoshi

FUKUSHIMA Yoshihiro  
AKIMICHI Tomoya  
KAWABATA Zen'ichiro  
OSADA Toshiki

TACHIMOTO Narifumi  
SATO Yo-Ichiro  
MOJI Kazuhiko  
KADA Ryohei

## RIHN Staff

<p>■ <b>DIRECTOR-GENERAL</b></p> <p>■ <b>DEPUTY DIRECTOR-GENERAL, Planning and Coordination</b></p> <p>■ <b>DEPUTY DIRECTOR-GENERAL, Research</b></p>	<p>YASUNARI Tetsuzo KUBOTA Jumpei SATO Testu</p>
---	--

## ADMINISTRATIVE OFFICE

### GENERAL AFFAIRS SECTION

Head IWASAKA Yutaka  
Deputy Head IZUMORI Yoshihiro  
General Affairs Subsection  
Chief FUJIKAWA Takeshi  
Clerk KARIYA Midori  
Personnel Subsection  
Head SUMITA Emi  
Clerk NAKAOHJI Yu  
Clerk TANAKA Mika  
Clerk TANAKA Naoko  
Planning Unit  
Head IZUMORI Yoshihiro  
Public Relations Subunit  
Clerk HONDA Tomoko

### ADMINISTRATIVE DIRECTOR KAWANO Hiroshi

### ACCOUNTING SECTION

Head YOSHIDA Takashi  
Deputy Head TERAZAWA Kunihiko  
Financial Planning Subsection  
Head MIYAUCHI Teruaki  
Clerk TSUJIMURA Hanako  
Facility Management Subsection  
Head UMEGAMI Tatsushi  
Accounting & Procurement Unit  
Head TERAZAWA Kunihiko  
Procurement Subunit  
Head SAKODA Fumiyo  
Accounting Subunit  
Head FUKAO Hidemasa

### RESEARCH COOPERATION SECTION

Head BANJOE Yoichi  
Research Cooperation Subsection  
Head NARUI Akinori  
Clerk KOGISO Ayana  
International Affairs Subsection  
Head BIVONE Junko  
Chief ZENZUKA Rie  
CRD/CRP Support Unit  
Head BANJOE Yoichi  
CRD Support Subunit  
Clerk INOUE Yuko  
CRP Support Subunit  
Head YAMAMOTO Hiroshi

## RESEARCH DEPARTMENT

### Program Directors

KUBOTA Jumpei  
MALLEE, Hein  
NAKATSUKA Takeshi  
SATO Tetsu  
TANIGUCHI Makoto

### Professors

HABU Junko Environmental Anthropology, Historical Ecology, East Asian Archaeology  
Hydrology  
KUBOTA Jumpei Architectural History, Urban History  
MURAMATSU Shin Biogeochemistry, Paleoclimatology  
NAKATSUKA Takeshi Local Environmental Studies,  
SATO Tetsu Conservation Ecology  
TANIGUCHI Makoto Hydrology

### Associate Professors

ENDO Aiko Marine and Coastal Policy, Fishery Economics  
ISHIKAWA Satoshi Conservation Ecology, Global Fisheries Science  
KIKUCHI Naoki Environmental Sociology  
TANAKA Ueru Agricultural Studies  
RAMPISELA, Dorotea Soil and Water Management

### Visiting Professors

FUNAKAWA Shinya Environmental Agronomy  
HIMIYAMA Yukio Geography  
KANEKO Nobuhiro Soil Ecology  
MATSUOKA Shunji Environmental Economics and Policy  
MIZUNO Kosuke Area study on Indonesia  
MORI Soichi Science and Technology Policy,  
Global Sustainability  
NAKAGAMI Ken'ichi Environmental Economics and Policy  
NAWATA Hiroshi Cultural Anthropology  
ONISHI Masayuki Linguistics, Language Education  
TANAKA Masakazu Cultural Anthropology  
YONEMOTO Shohei History and Philosophy of Science

### Visiting Associate Professors

KAJITANI Shinji Philosophy  
KANIE Norichika Earth System Governance  
NAITO Daisuke Southeast Asian Area Study,  
Political Ecology  
OKUDA Noboru Ecology  
OKUMIYA Kiyohito Field Medicine  
SHIRAIWA Takayuki Glaciology  
UBUKATA Fumikazu Southeast Asian Studies  
UCHIYAMA Junzo Environmental Archaeology,  
Landscape History

### Visiting Research Fellows

MUNIANDI, Jegadeesan Agrarian Change, Land Use Dynamics and Migration  
SALAENOI, Jintana Marine Biotechnology  
TRAFALGAR, Rex Ferdinand Mallare Fisheries Science

### Senior Project Researchers

H-05 SANO Masaki Paleoclimatology

### Project Researchers

C-08 HAYASHI Kengo Southeast Asian Architectural History, Urban History  
C-08 MATSUDA Hiroko Southeast Asian Architectural History, Urban History  
C-08 MEUTIA, Ami Aminah Hydrology  
C-08 MIMURA Yutaka History, Urban History, GIS  
C-08 UCHIYAMA Yuta Urban Planning, GIS  
C-09 HASHIMOTO (WATANABE) Satoko Soil Science  
C-09 SEKINO Nobuyuki Environmental Sociology  
D-05 OGATA Yuka Global Fishery Sciences  
D-05 OKAMOTO Yuki Agricultural Systems  
D-05 WATANABE Kazuo Area Studies  
D-05 YAP, Minlee Coral Reef Ecology  
R-07 ENDO Hitoshi Archaeology

R-07 ISHIMOTO Yudai Ecological Anthropology  
R-07 MIYAZAKI Hidetoshi Soil Science

R-07 SASAKI Yuko Rural Development  
R-07 SHIMIZU Takao Cultural Anthropology  
R-07 TESHIROGI Koki Geography  
R-08 MASUHARA Naoki Public Administration  
Studies, Energy Policy

R-08 OH Tomohiro Resource Governance  
R-08 YAMADA Makoto Hydrology  
R-09 ADACHI Kaori Archaeology  
R-09 HAMADA Shingo Environmental  
Anthropology

R-09 KUSAKA Soichiro Physical Anthropology  
R-09 OISHI Takanori Ecological Anthropology  
H-05 ITO Keisuke Japanese History  
H-05 KAMATANI Kaoru History  
H-05 MURAKAMI Yumiko Japanese Archaeology  
E-05 KITAMURA Kenji Environment  
E-05 MIKI Hiroshi Statistical Physics  
E-05 NAKAGAWA Chigusa Environmental Sociology  
E-05 TAKEMURA Shion Landscape Ecology  
E-05 OMOTO Reiko Geography, Food Studies,  
Social Network Analysis

### Project Research Associates

C-08 BAO Muping  
C-09 KATO Hisaaki  
C-09 KOYAMA Masami  
D-05 MUTO Nozomu  
R-07 KIHIRA Tomoe  
R-08 HONDA Hisami  
R-08 OKAMOTO Takako  
R-08 TERAMOTO Shun  
R-09 TAKEHARA Mari  
H-05 XU Chenxi  
E-05 FUKUSHIMA Atsuko

## Center for Research Development (CRD)

**DIRECTOR** KUBOTA Jumpei

### Heads of Units

Initiative Framework Unit KUBOTA Jumpei  
Collaboration Nexus Unit TANIGUCHI Makoto  
Planning Unit KUBOTA Jumpei  
Future Earth Unit TANIGUCHI Makoto

### Professors

KUBOTA Jumpei Hydrology  
MALLEE, Hein Social Science

### Associate Professors

HANDOH Itsuki C. Earth Systems Science, Mathematical Modeling  
TAKAGI Akira Fisheries Science, Molecular Ecology

### Assistant Professors

MCGREEVY, Steven Robert Rural Sustainable Development  
ONISHI Yuko Environmental Science

### Research Fellow, NIHU Center for Area Studies / RIHN Initiative for Chinese Environmental Issues (RIHN-China)

FUKUSHI Yuki Modern Chinese History

## Center for Research Promotion (CRP)

**DIRECTOR** NAKANO Takanori

### Heads of Units

Survey and Analysis Unit ISHIKAWA Satoshi  
Informatics Unit SEKINO Tatsuki  
Communication and Production Unit ABE Ken-ichi

### Professors

ABE Ken-ichi Ecological Anthropology  
NAKANO Takanori Isotope Environmental Studies

### Associate Professors

KONDO Yasuhisa Archaeology, GIS  
NILES, Daniel Geography  
SEKINO Tatsuki Information Science  
TERADA Masahiro History, Museum Anthropology

### Assistant Professors

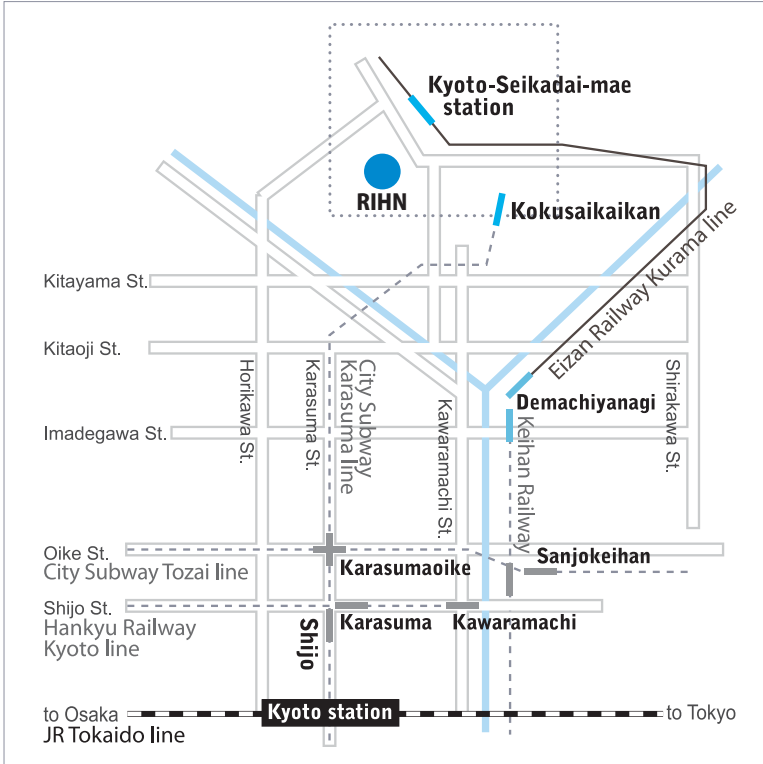
KUMAZAWA Terukazu Environmental Planning, Regional Informatics  
SHIN Kicheol Petrology, Geochemistry, Isotope Geology  
YASUTOMI Natsuko Meteorology, Climatology

### Visiting Professor

AKIMICHI Tomoya Integrated Area Study



# Access



## By City Subway

From Kyoto Station, take the Karasuma Line to Kokusaikaikan Station (the last station), and transfer to Kyoto Bus.

## By Kyoto Bus

From Kokusaikaikan Station, take bus No. 40, 50 or 52 to Chikyuken-mae.

RIHN is at the base of the hill on your left.

## By Eizan Railway

From Demachiyanagi Station in Kyoto City, take the Kurama Line.

Get off at Kyoto-Seikadai-mae Station.

RIHN is a 10-minute walk from the station.

