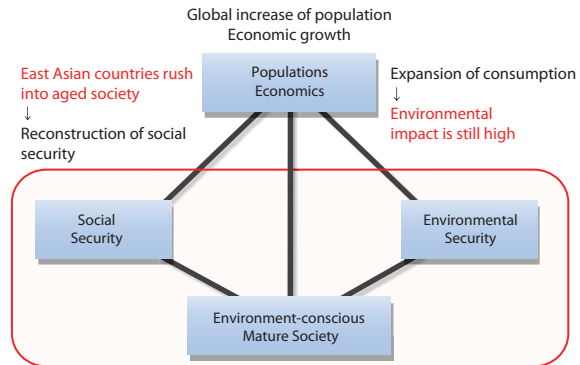


Current Feasibility Studies

Shrinking Societies: Integrating Ecosystem Health and Social Welfare in East Asia

KUBOTA Jumpei, RIHN Region: China, Japan and Korea



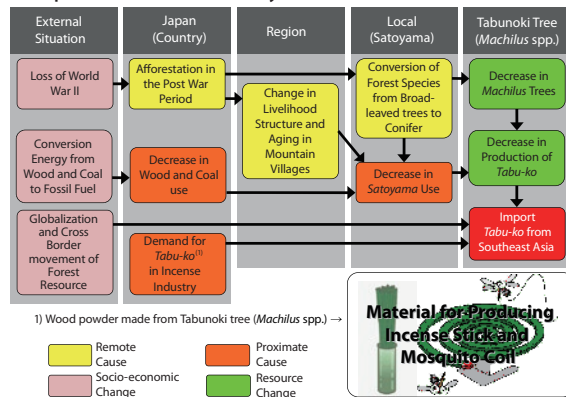
While global population continues to increase, East Asian countries are aging. How can quality of life in such societies be maintained—and improved—without population or even economic growth? In China, Japan, and Korea, where per capita consumption continues to increase, long term trends of population decline will not necessarily reduce demand for resources or pressure on ecosystems. This project therefore will develop new indices for evaluating ecosystem health and social welfare and propose a vision for environmentally-conscious, high-welfare societies in East Asia.

Land Use Diversity and Autonomy in Southeast Asia

TANIGUCHI Makoto, RIHN Region: Southeast Asia

In Tropical Asia, monoculture plantations of para-rubber, eucalyptus and acacia have expanded far beyond ecologically suitable habitats. Decreasing quantity and quality of natural forest have significantly impacted socio-cultural practices and ecological conditions in the region. How have residents and communities coped with these changes and their international dimensions? This feasibility study clarifies the proximate and remote causes and driving forces of land- and resource-use change in the region, with special attention to policy and practical options available to local communities.

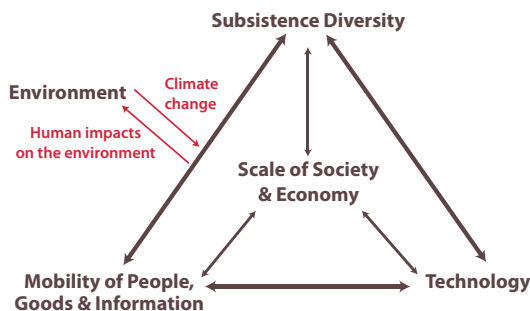
Example of Resource Chain Study



Reevaluating Advantages of Small-Scale Economies: Finding Alternative Strategies to Overcome Vulnerability in Large-Scale Economies

HABU Junko, University of California, Berkeley

Region: the North Pacific Rim, including Japan, the Kuril Islands, the Russian Far East, Alaska, the Pacific Northwest Coast, California and Nevada



This project examines the importance of small-scale and diversified economies, especially of food production, for the 'long-term' sustainability of human societies. Archaeological, historical, ethnohistorical and paleoenvironmental studies from several locations will test our hypothesis that diversity in food production was inseparably related to the scale of communities and their long-term sustainability. Ethnographic and sociological studies of small-scale communities and food systems will be conducted to understand the complex interrelationships between cultural and natural factors in contemporary urban and rural settings. Insights obtained from past and present case studies will be used to develop proposals for future plans and public outreach programs that will convey the significance of subsistence/food diversity and guide the actions of the next generations.

Improving Environmental Literacy and Stakeholder Communication

ISHIKAWA Mamoru, Hokkaido University
Region: Mongolia and rural Hokkaido, Japan

This project examines how local stakeholder and scientific communities perceive and respond to environmental problems. It emphasizes how differences in environmental literacy—the ability to effectively seek, read, and use environmental information—inhibit or facilitate awareness of and dialogue about environmental problems. It examines two communities undergoing rapid socio-ecological change: Mongolia, where traditional use of ecosystem services is being displaced by new products and values; and Hokkaido, where, following depopulation and loss of industry, stakeholders have begun to collaborate with scientists to seek new resource-based livelihood strategies.



The History of Human-Water Interactions in East Asian Livelihood Complexes

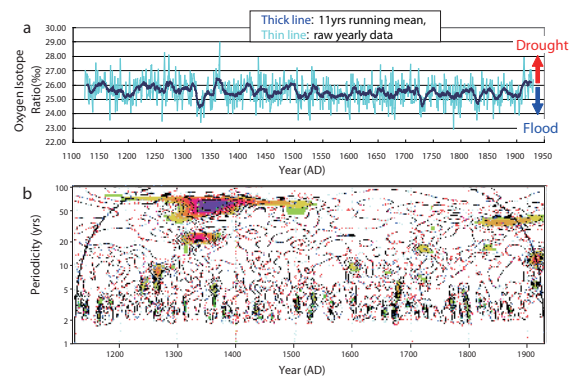
MURAMATSU Koichi, Gakushuin University
Region: four areas of the Loess Plateau (Yanan, Wuding Hu, Fen He, and Datong)

This project will describe the history of human-water relationships in livelihood complexes found in four areas of the Loess Plateau in China. The Plateau has a long history of human inhabitation and several distinct livelihood complexes can be identified, as can a long sequence of both natural- and anthropogenically-caused environmental transformations. The availability and use of water has been a determining factor throughout. In integrating environmental history, arid-land forest science, and environmental law and governance, the project will contribute to a design-oriented, problem-solving approach to human-water interactions in the Plateau.



Historical Adaptation to Climate Change in Japan: Integrating Palaeoclimatological Data with Historical and Archaeological Evidences

NAKATSUKA Takeshi, Nagoya University
Region: Japan

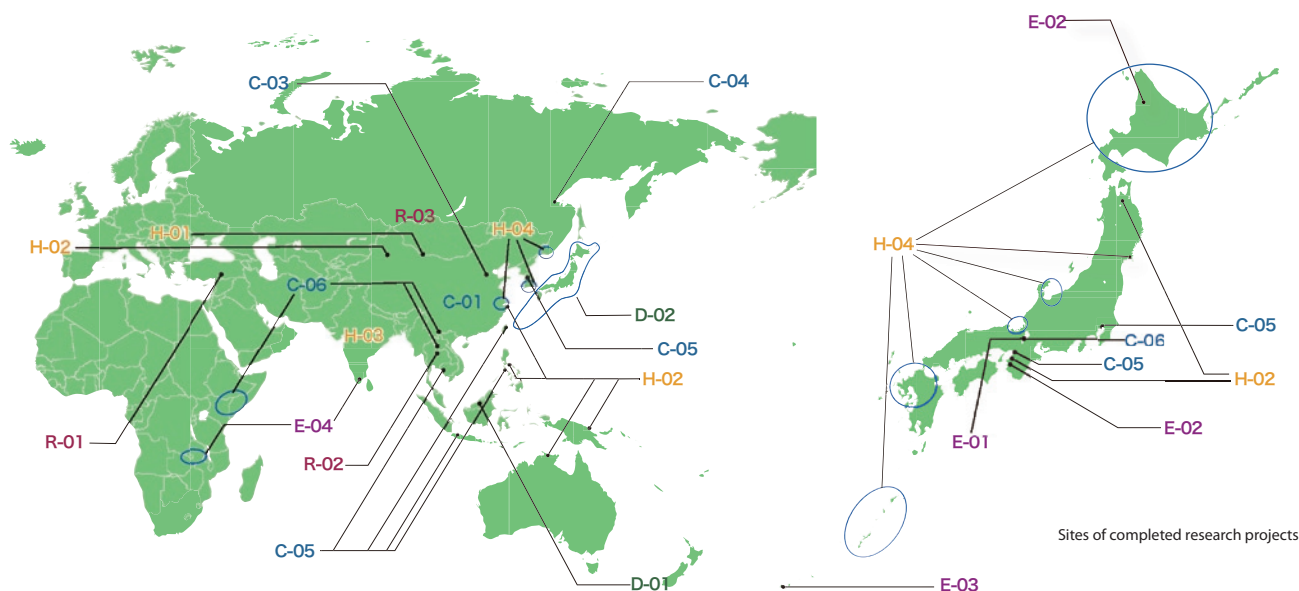


This project investigates the ways in which human societies in Japan have reacted to environmental change since the Jomon era. Past climate variability can now be reconstructed with great precision due to recent developments in the analysis of paleoclimatological data, chiefly tree-ring oxygen isotopic ratios. In correlating past climate changes and historical records, we may identify general characteristics of social systems that are tolerant of or vulnerable to environmental change.

Completed Research

When a project moves to CR (Completed Research) status, the contract with RIHN is concluded. Research teams disperse to university research, teaching, and other duties. Project publications and other communications and contributions may follow for several years; they are assessed in the final post-evaluation, two years after formal project conclusion. At RIHN, however, each project forms part of the institute's heritage; project results and data are entered into the RIHN archives upon which future RIHN projects may be formulated.

Fiscal Year Completed	Leader	No	Research Project
2006	HAYASAKA Tadahiro	C-01	Emissions of Greenhouse Gases and Aerosols, and Human Activities in East Asia
	KANAE Shinjiro	C-02	Global Water Cycle Variation and the Current World Water Resources Issues and Their Perspectives
	WATANABE Tsugihiro	R-01	Impact of Climate Changes on Agricultural Production System in the Arid Areas
	NAKAWO Masayoshi	H-01	Historical Evolution of the Adaptability in an Oasis Region to Water Resource Changes
	YACHI Shigeo	E-01	Multi-Disciplinary Research for Understanding Interactions between Humans and Nature in the Lake Biwa-Yodo River Watershed
2007	FUKUSHIMA Yoshihiro	C-03	Recent Rapid Change of Water Circulation in the Yellow River and Its Effects on Environment
	ICHIKAWA Masahiro	D-01	Sustainability and Biodiversity Assessment on Forest Utilization Options
	AKIMICHI Tomoya	R-02	A Trans-Disciplinary Study on Regional Eco-History in Tropical Monsoon Asia: 1945-2005
2008	SEKINO Tatsuki	E-02	Interaction between Environmental Quality of the Watershed and Environmental Consciousness
	TAKASO Tokushiro	E-03	Interactions between Natural Environment and Human Social Systems in Subtropical Islands
2009	SHIRAIWA Takayuki	C-04	Human Activities in Northeastern Asia and their Impact on Biological Productivity in the North Pacific Ocean
2010	TANIGUCHI Makoto	C-05	Human Impacts on Urban Subsurface Environments
	YUMOTO Takakazu	D-02	A New Cultural and Historical Exploration into Human-Nature Relationships in the Japanese Archipelago
	SATO Yo-ichiro	H-02	Agriculture and Environment Interactions in Eurasia: Past, Present and Future
2011	KAWABATA Zen'ichiro	C-06	Effects of Environmental Change on the Interactions between Pathogens and Humans
	KUBOTA Jumpei	R-03	Historical Interactions between Multi-Cultural Societies and the Natural Environment in a Semi-Arid Region in Central Eurasia
	OSADA Toshiki	H-03	Environmental Change and the Indus Civilization
	UCHIYAMA Junzo	H-04	Neolithisation and Modernisation: Landscape History on East Asian Inland Seas
	UMETSU Chieko	E-04	Vulnerability and Resilience of Social-Ecological Systems



The Center for Coordination, Promotion and Communication (CCPC)

The Center for Coordination, Promotion and Communication (CCPC) is responsible for research, infrastructure, coordination, and management that concern the institute as a whole. It is divided into three divisions.

The **Division of Research Development** is chiefly responsible for establishing RIHN's long term research trajectory and facilitating the internal and external projects and collaborations necessary for its realization.

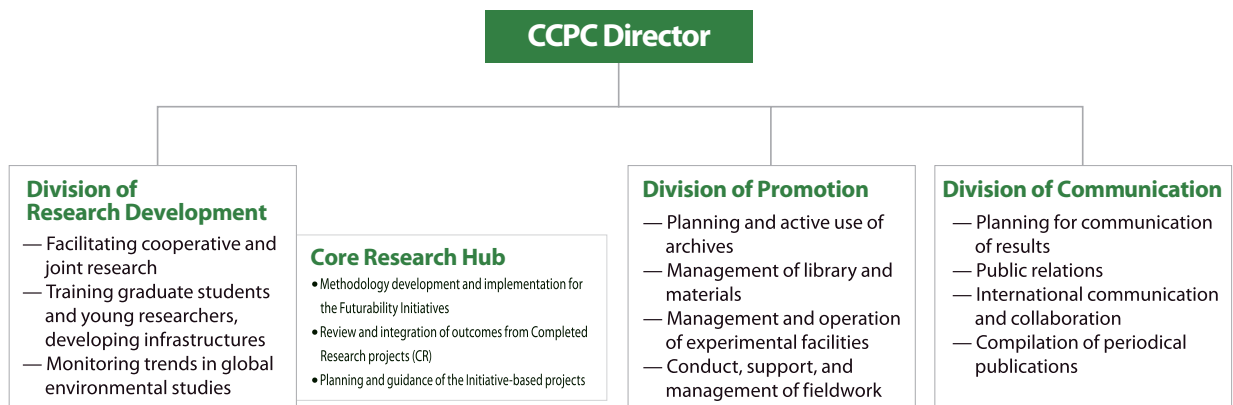
Since 2011 the Division also houses the **Core Research Hub** (see pages 4-5), which serves as a cross-cutting mechanism to capture and synthesize key contributions of domain-based research projects and develop new research projects. Its efforts are most recently manifest in the formation of the Global Environmental Change-Japan network described on page 50.

The **Division of Promotion** develops and maintains the laboratory facilities necessary for research and fieldwork, and builds the databases and archives supporting ongoing research (see pages 52-53).

The **Division of Communication** determines how communication regarding RIHN research, processes and outcomes should be established with academic, public and user-specific communities (see pages 48-49).



Professor SATO Yo-Ichiro,
Director of the CCPC.



The CCPC also regularly organizes events for students and the general public. Past events have included talks and activities on animals, insects and story-telling, enriching normal science curricula and expanding students' ideas of who is a scientist and what scientists do. RIHN also regularly provides tours of the research rooms and laboratories to groups of primary-, middle-, high-school and university students, and conducts an annual open house for the surrounding community.



Science Communication

As a national research institute, RIHN is expected to conduct exemplary science. It also must communicate its research agenda and results to the public and contribute to public awareness and discussion of contemporary environmentalism. A number of public symposia, seminar series, and publications are designed to reach specialist and general audiences. Recent activities and publications include:

The Earth Forum Kyoto and the Earth Hall of Fame Kyoto Award

The Earth Forum Kyoto invites world-renowned experts and activists to discuss the environmental and cultural bases of more responsible human societies. The Earth Hall of Fame Kyoto Award is given to those who have made exemplary contributions to the protection of the global environment. Organizers of the event are the International Institute for Advanced Studies, the Kyoto International Conference Centre, and RIHN.



The 2011 recipients of the Earth Hall of Fame Kyoto Award were Professor Lester R. Brown (left), founder of the World Watch Institute and founder and President of the Earth Policy Institute, and Professor Klaus Töpfer (right), former Minister of the Environment, Nature Conservation and Nuclear Safety in Germany, former Under-Secretary-General of the United Nations, former Executive Director of the United Nations Environment Programme, and founding director of the Institute for Advanced Sustainability Studies in Potsdam.

RIHN Forum

The RIHN Forum is usually held at the Kyoto International Conference Center and is open to the general public. Since 2004 the proceedings were published as books intended for a general audience.

Reflections on the water around us, 3 July 2011

RIHN International Symposium

An annual symposium at RIHN describing the key findings of concluding RIHN research projects.



Professor Sander van der Leeuw, Dean of the School of Sustainability at Arizona State University, giving the 2011 keynote address

Beyond Collapse: Transformation of human-environmental relationships, past, present and future, 26-28 October, 2011

RIHN Public Seminars

Public seminars are held throughout the year at RIHN or in the city center.

Recovery from the Great East Japan Earthquake: The importance of including survivors' perspectives
19 May, 2011

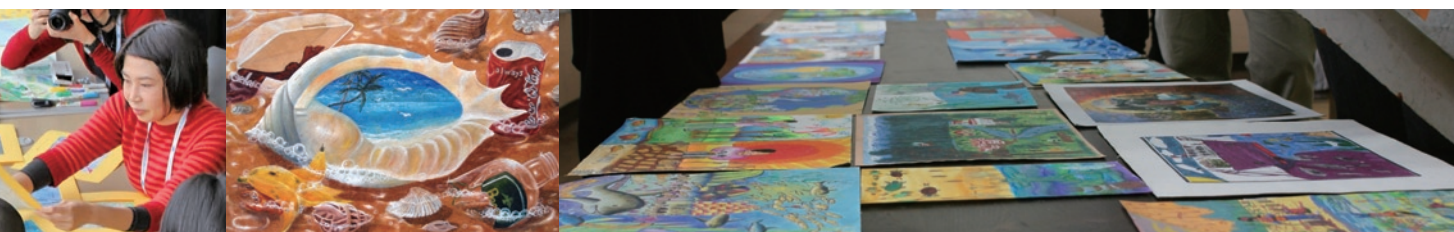
Invitation to global environmental studies: Behind the scenes
5 August, 2011

How will you live after oil resources are gone?
9 September, 2011

RIHN Area Seminars

RIHN Area Seminars take place in, and address specific environmental issues pertaining to, a particular part of Japan.

People and nature in Eastern Eurasia: Twenty years after the Soviet Union
12 June 2011, Hokkaido University



RIHN Seminars

This seminar series is oriented towards researchers at RIHN, inviting a wide range of visiting scholars to present their most current research. Seminars in 2011 included:

Health impacts by disasters in the world and East Japan Earthquake—Challenges and perspectives of emergency and long-term response

KUNII Osamu, Chief, Child Survival and Development, UNICEF Somalia Support Center, Nairobi, Kenya
13 July, 2011

Understanding climate change and cultural innovation in long-term perspective

Peter Jordan, Reader, University of Aberdeen/RIHN Visiting Research Fellow
2 August, 2011

Malaria situation and related factors in a Central Border Areas of Laos and Vietnam

Tiengkham Pongvongsa, Director, Center of Malariology, Parasitology and Entomology, Savannakhet Province, Lao P. D. R./RIHN Visiting Research Fellow
4 August, 2011

In search of the first farmers of Gujarat

Pottentavida Ajithprasad, Professor, the Maharaja Sayajirao University of Baroda/RIHN Visiting Research Fellow
4 August, 2011

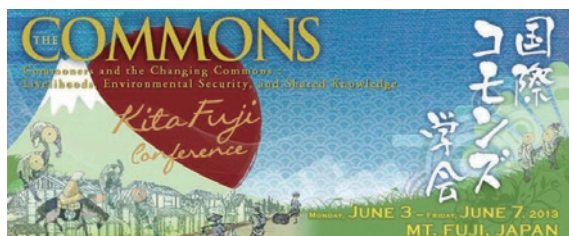
Transdisciplinarity discussions on the future of global environmental change and sustainability research

Patrick Monfray, Deputy Head of the National Research Agency, France (ANR)
Heidi Hackmann, Executive Director, International Social Science Council (ISSC)
19 January 2012

2013 Conference of the International Association for the Study of the Commons (IASC)

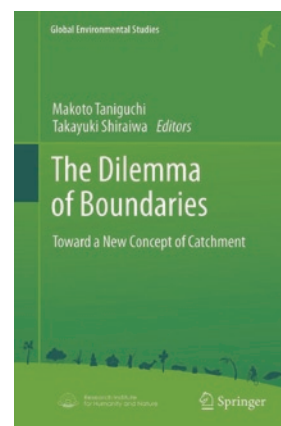
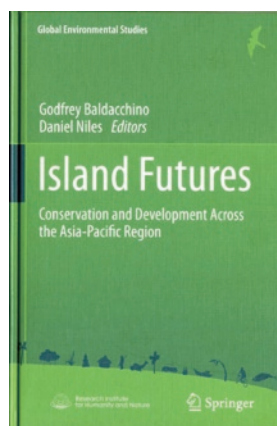
RIHN is collaborating with the Onshirin Regional Public Association, a group of Japanese commoners, and the International Association for the Study of the Commons (IASC) to organize the principal international conference of the broad community of scholars examining the use and governance of common property and shared resources.

The 2013 conference is to take place on common lands located on the north slope of Mt. Fuji, and is Co-Chaired by Professor Margaret McKean (Duke University), and RIHN Professor Tomoya AKIMICHI.

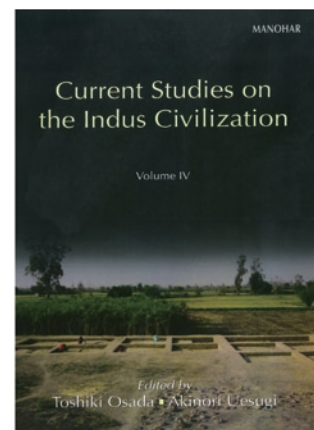


RIHN Book Series: Global Environmental Studies

RIHN has partnered with Springer Publishers to establish the Global Environmental Studies book series. Titles in the series will reflect the full breadth of RIHN scholarship.



Other Publishing and Seminars

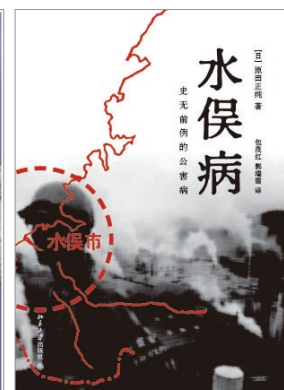
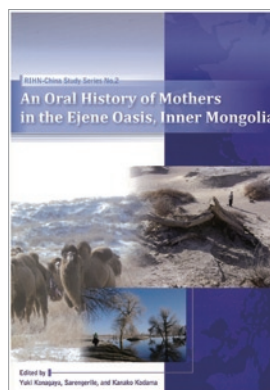


The RIHN Encyclopedia of Global Environmental Studies was published in 2010 to commemorate RIHN's 10th anniversary.

The encyclopedia was designed and written in order to present a single systematic and comprehensive reference work describing RIHN's research in the field of global environmental studies.

RIHN-China

With support from the National Institute for the Humanities Center for the Promotion of Area Studies, RIHN maintains the Research Initiative for Chinese Environmental Issues, a key node in the network of East Asian scholars concerned with environmental change in China. A RIHN-China Newsletter is published in Japanese and Chinese. RIHN-China also supports a series of symposia, held in both China and Japan, on critical environmental topics in China and East Asia.



Photos (clockwise from top):

The RIHN-China lecture in Peking University in February 2012.

RIHN supported publication of a Chinese translation of Professor Harada's acclaimed book on Minamata disease.

RIHN-China Study Series publication No. 2, *An Oral History of Mothers in the Ejene Oasis, Inner Mongolia*.

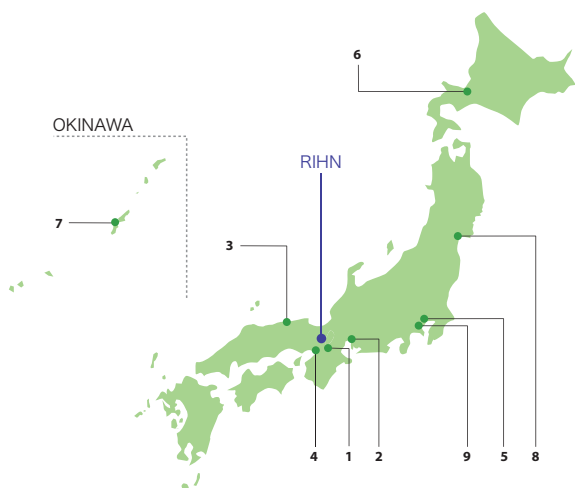
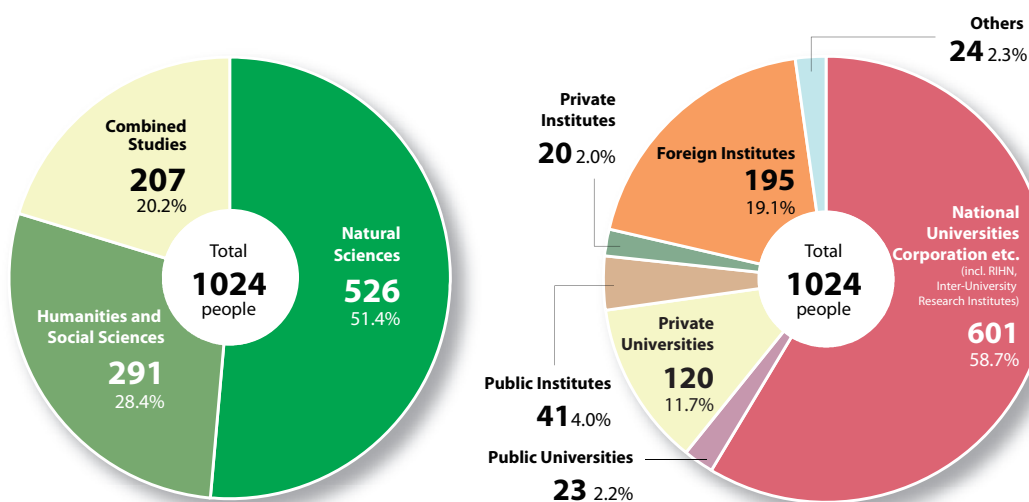
GEC Japan

GEC-Japan is a networking platform created in 2011 to facilitate and promote institutional and research collaboration among Japanese and international representatives of the four Global Environmental Change Programs: the International Human Dimensions Programme (IHDP), DIVERSITAS, the International Geosphere-Biosphere Program (IGBP), and the World Climate Research Program (WCRP).

As the landscape of international environmental research is changing rapidly, RIHN actively consults with key actors and institutions in order to ensure that, while retaining its specific qualities, RIHN's research and institutional trajectory are broadly consistent with international currents and priorities. To this end RIHN hosted the 5th meeting of the Belmont Forum in January 2012, and many RIHN researchers attended the Planet Under Pressure conference in March 2012. The GEC-Japan platform is to support and promote dialogue among scholars interested in global change issues and transdisciplinary actions in Asia.



Research Collaboration



Collaboration in Japan

1. Center for Ecological Research, Kyoto University
2. Hydrospheric-Atmospheric Research Center, Nagoya University
3. Arid Land Research Center, Tottori University
4. National Museum of Ethnology
5. Institute of Industrial Sciences, the University of Tokyo
6. Institute of Low Temperature Science, Hokkaido University
7. Tropical Biosphere Research Center, University of the Ryukyus
8. Graduate School of Science, Tohoku University
9. Graduate School and Research Institute of Environment and Information Sciences, Yokohama National University

International Collaboration

Memoranda of Understanding and Research Cooperation Agreements (As of April 1st, 2012)

*MOU signed in 2011

ALGERIA
Centre National de Développement des Ressources Biologiques (R-05)

BANGLADESH
International Centre for Diarrhoeal Disease Research (R-04)

BHUTAN
Department of Medical Service, Ministry of Health, the Kingdom of Bhutan (D-03)

CHINA
Fudan University (RIHN-CHINA)
Qinghai University Hospital (D-03)
Research Center for Environmental Technology of River and Lake, Shanghai Jiao Tong University (C-06)
Yunnan Health and Development Research Association* (R-04)

FRANCE
La Fondation Maison des Sciences de l'Homme (R-02)

INDIA
Maharaja Sayajirao University of Baroda (H-03)
Rajiv Gandhi University (D-03)

INDONESIA
Bogor Agricultural University* (C-08)
Hasanuddin University* (C-09-Init)
Indonesian Institute of Sciences (C-08)
Universitas Indonesia (C-08)

KENYA
National Museums of Kenya (C-06)

LAOS
National Agriculture and Forestry Research Institute (H-02)
National Institute of Public Health, Ministry of Health (R-04)

MONGOLIA
Hustai National Park Trust (D-04)
Institute of Biology, Mongolian Academy of Sciences (D-04)
Institute of Botany, Mongolian Academy of Sciences (D-04)
Institute of Geoecology, Mongolian Academy of Sciences (D-04)
Institute of Meteorology and Hydrology, Ministry of Nature and Environment (D-04)

NIGER
International Crops Research Institute for the Semi-Arid Tropics (ICRISAT), West and Central Africa* (R-07)

PHILIPPINES
University of the Philippines Visayas* (D-05)

RUSSIA
Far Eastern National University (H-04)
Institute for Biological Problems of Cryolithozone (C-07)
Institute of Humanitarian Research and the Problems of the Northern Minority Peoples (C-07)
The Melnikov Permafrost Institute of Siberian Branch of the Russian Academy of Sciences (C-07)

SOUTH KOREA
Institute of Islands Culture (D-02)

SUDAN
Red Sea University* (R-05)
Sudan University of Science and Technology (R-05)

SWEDEN
The Sven Hedin Foundation (H-02)

THAILAND
Faculty of Fisheries, Kasetsart University* (D-05)
Rice Department, Ministry of Agriculture and Cooperatives (H-02)
The Southeast Asian Fisheries Development Center (D-05)

TURKEY
Adiyaman University* (C-09-Init)
Cukurova University* (C-09-Init)
Harran University* (C-09-Init)

UNITED KINGDOM
Sainsbury Institute for the Study of Japanese Arts and Cultures (H-04)
London School of Hygiene and Tropical Medicine (R-04)

ZAMBIA
Zambia Agricultural Research Institute, Ministry of Agriculture and Cooperatives (E-04)

Research Facilities

Research rooms on the RIHN campus are designed to provide a sense of openness. The design concept is to allow implemented projects to be loosely interconnected as they occur in one large curved space 150 meters in length. The facilities help external researchers as well as RIHN research staff to meet one another, since they are designed with the maximization of shared use in mind. At the center of the main building, a library and computer room are located for the convenience of many users, and three common rooms are provided for casual discussions. On the basement floor, a cluster of fully functional laboratories has been designed with emphasis on convenience for shared use, as with the research rooms.

The separate RIHN House is a guesthouse. The assembly hall and a dining lounge located to the left of the house entrance serve as meeting spaces for the RIHN staff as well as for guests.

Appropriately for an institution researching the global environment, RIHN is housed in a tile-roofed building suited to the Kyoto landscape, where as many as possible of the trees already on the site have been retained. Lighting and air-conditioning also employ the latest designs to minimize the building's impact on the environment. The design has won acclaim, receiving awards from the Illumination Engineering Institute of Japan, the Japan Institute of Architects, the Green Building Award from MIPIM Asia, and the Architectural Institute of Japan.



Laboratories

RIHN research projects are multi-disciplinary and multimethod; in common they share the need for high quality physical observation and chemical and biological analysis of the surface environments of the earth. As a national institute, RIHN houses eighteen basement laboratories designed to address this need. There are state-of-the-art laboratories dedicated to microscopic, DNA and stable isotope analysis. Additional facilities include two fieldwork preparation rooms for storage and maintenance of observational and sampling equipment, three low-temperature rooms for organism and ice core storage, three incubator rooms for storage of organisms requiring specific temperatures, and a clean room in which samples can be processed in a contamination-free environment.

Instruments

While individual projects make extensive use of specialized instruments, RIHN provides common access to the advanced instruments essential to contemporary environmental studies. In order to assure the proper use and care for this equipment, and to support its accessibility to the joint research of an inter-university research institute, the Division of Promotion maintains a manual of standard equipment and laboratory procedures. Stable isotope analysis has stimulated environmental science in recent years, and RIHN houses one of the most advanced laboratories for stable isotope analysis in Japan, as well as a range of support instrumentation. In order to facilitate access to the instruments, common consumable supplies are purchased collectively.

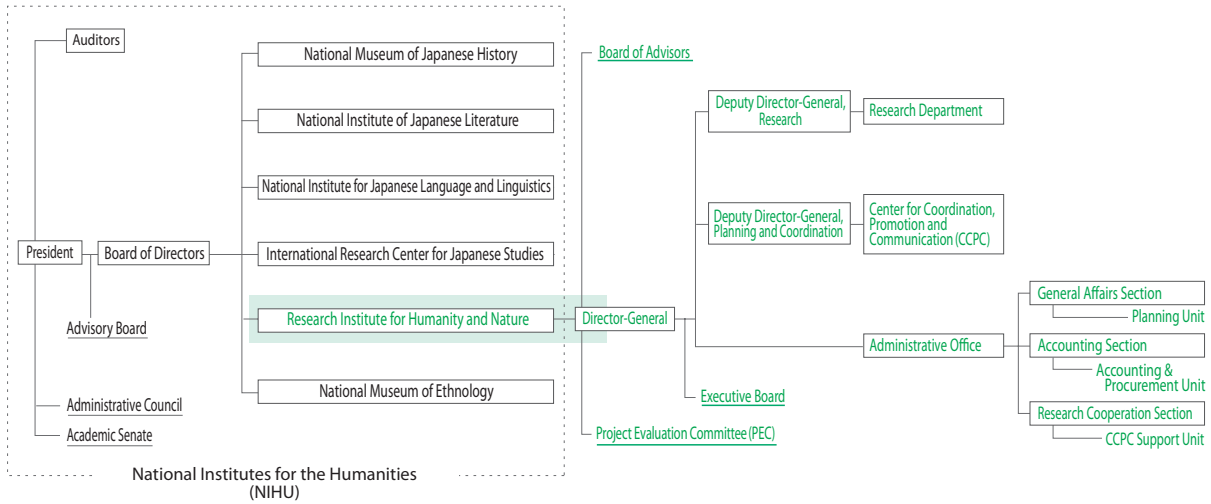
Management

Within the Center for Coordination, Promotion and Communication, the Division of Promotion manages and maintains the research facilities in cooperation with the research projects making use of them. About 200 people from 35 institutes used the RIHN laboratory facilities in fiscal 2009. As new research projects are established at RIHN each year, the Division of Promotion runs workshops several times a year in order to develop general understanding of the facilities and their procedures and enhance communication among lab workers. Laboratory procedures, instrument manuals and information relating to samples in storage are also available on the RIHN laboratory website. Beginning in 2010, the Division of Promotion will also conduct research into new technical methods in environmental studies.



Stable isotope analysis describes how things are linked to one another, where they come from and how they change in contact with other elements and through time. It is a powerful tool in the study of contemporary biogeochemical processes as well as of deep historical change. In analyzing the stable isotopes of the varying elements present in ground-, river-, and lake-water of a particular landscape, for example, researchers can describe its original sources as well as the route and time it took to get to its present location. Such description can illuminate how mountain forests and soils contribute to the quality of rice grown on the plains below.

Administrative Structure



Financial Information

Segmental Financial Information (Fiscal Year 2010)

Operating Expenses

Category	Amount (Yen in thousands)
Operating Expenses	1,998,248
Inter-University/Joint Research	997,894
Outsourced Studies	63,720
Outsourced Operations	75,692
Personnel	860,941
General Management	180,817
Financial Expenses	57,199
Total Expenses	2,236,265

Operating Income

Category	Amount (Yen in thousands)
Subsidy for Operation	2,000,251
Contract Operations, etc.	85,338
Donations	3,842
Others	159,780
Total Earnings	2,249,213

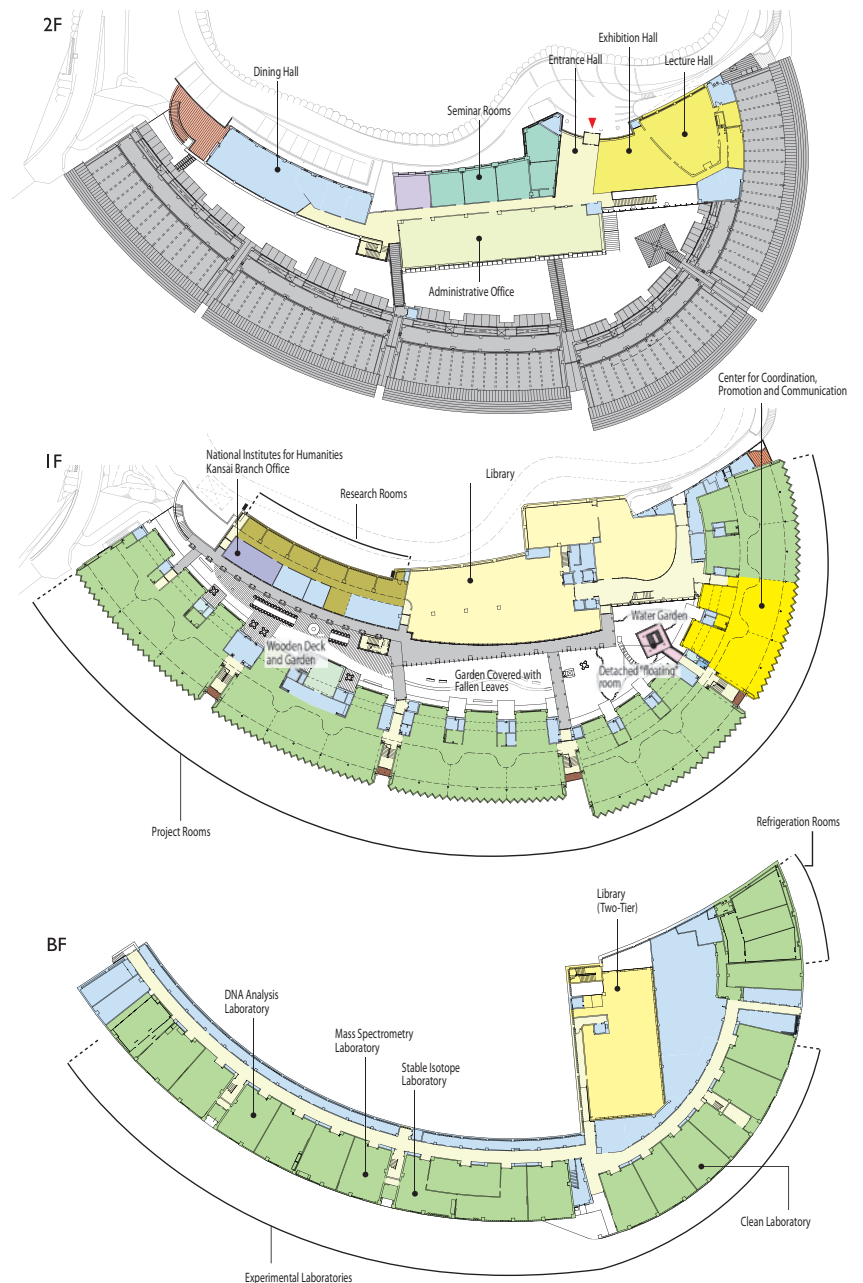
Operational Balance 12,947

External Sources of Funding

(Fiscal Year 2010)

Category	Amount (Yen in thousands)
Fund for Promotion of Academic and Industrial Collaboration	83,045
Grants-in-Aids for Scientific Research	70,870
Donations for Research	20,925

* Fund for Promotion of Academic and Industrial Collaboration is the sum of contract research and joint research expenses.



Board and Committees

*As of July, 2012

Board of Advisors

■ Oversees personnel, planning, administration and operation of the institute

<p>FUJIOKA Ichiro President, Kyoto Sangyo University</p> <p>FURUSAWA Iwao President, Tottori University of Environmental Studies</p> <p>KAWAI Shuichi Professor, Research Institute for Sustainable Humanosphere, Kyoto University</p> <p>KONAGAYA Yuki Professor, Department of Social Research, National Museum of Ethnology</p> <p>OTSUKI Kyoichi Professor, Faculty of Agriculture, Kyushu University</p> <p>WASHIDA Kiyokazu Professor, Department of Philosophy, Faculty of Letters, Otani University</p>	<p>WASHITANI Izumi Professor, Graduate School of Agricultural and Life Sciences, the University of Tokyo</p> <p>YASUNARI Tetsuzo Professor, Hydrospheric Atmospheric Reseach Center, Nagoya University</p>	<p>KADA Ryohei Program Director, RIHN</p> <p>KUBOTA Jumpei Program Director, RIHN</p> <p>MOJI Kazuhiko Program Director, RIHN</p> <p>NAKANO Takanori Program Director, RIHN</p> <p>SATO Yo-Ichiro Deputy Director-General, RIHN</p> <p>Director, CCPC, RIHN</p> <p>TANIGUCHI Makoto Program Director, RIHN</p> <p>WATANABE Tsugihiko Deputy Director-General, RIHN</p>
---	--	--

Project Evaluation Committee (PEC)

■ External review of research project proposals

<p><i>Domestic</i></p> <p>KOIKE Isao Inspector General, University of the Ryukyus / Professor Emeritus, the University of Tokyo</p> <p>NAKAMURA Masami Professor, Edogawa University / Former Senior Staff Writer, Editorial Bureau, Nihonkeizai Shimbun Inc.</p> <p>NAKANISHI Hisae Professor, Graduate School of Global Studies, Doshisha University</p> <p>UETA Kazuhiro Dean, Graduate School of Economics and Faculty of Economics, Kyoto University</p> <p>WASHIDA Kiyokazu Professor, Department of Philosophy, Faculty of Letters, Otani University</p> <p>YAMAGATA Toshio Dean, School of Science, the University of Tokyo</p> <p>YASUOKA Yoshifumi External Auditor, Research Organization of Information and Systems</p> <p>YOKOYAMA Toshio Vice-President, Shiga University</p>	<p><i>Overseas</i></p> <p>BELLWOOD, Peter Professor, School of Archaeology and Anthropology, the Australian National University, Australia</p> <p>CHUN, Kyung-soo Professor, Department of Anthropology, Seoul National University, Korea</p> <p>FU, Congbin Director, Institute for Climate and Global Change Research, School of Atmospheric Science, Nanjing University, China</p> <p>LOVEJOY, Thomas E. President, the H. John Heinz III Center for Science, Economics and the Environment, USA</p> <p>McDONALD, Anne Professor, Graduate School of Global Environmental Studies, Sophia University, Japan</p> <p>RANDALL, Roland Life Fellow, Girton College, University of Cambridge, UK</p> <p>SCHOLZ, Roland Professor, Natural and Social Science Interface, Institute for Environmental Decisions, Swiss Federal Institute of Technology Zurich, Switzerland</p>
---	--

Executive Board

■ Oversees administrative operation of the institute

<p>TACHIMOTO Narifumi Director-General</p> <p>SATO Yo-Ichiro Deputy Director-General</p> <p>Director, CCPC</p> <p>WATANABE Tsugihiko Deputy Director-General</p>	<p>KADA Ryohei Program Director</p> <p>KUBOTA Jumpei Program Director</p> <p>MOJI Kazuhiko Program Director</p>	<p>NAKANO Takanori Program Director</p> <p>TANIGUCHI Makoto Program Director</p> <p>IBUKA Junji Director, Administrative Office</p>
--	---	---

Emeritus Professor

NAKANISHI Masami
WADA Eitaro
NAKAWO Masayoshi
FUKUSHIMA Yoshihiro
AKIMICHI Tomoya
KAWABATA Zen'ichiro

Guest Professor

KINOSHITA Tetsuya

In Memoriam

Professor HIDAKA Toshitaka
First Director-General of RIHN

RIHN Staff

■ DIRECTOR-GENERAL	TACHIMOTO Narifumi
■ DEPUTY DIRECTOR-GENERAL, Planning and Coordination	SATO Yo-Ichiro
■ DEPUTY DIRECTOR-GENERAL, Research	WATANABE Tsugihiko

ADMINISTRATIVE OFFICE

■ GENERAL AFFAIRS SECTION

Head IWASAKA Yutaka
Deputy Head MATSUO Takashi
General Affairs Subsection
Head UEMURA Hiroki
Chief HARA Akiko
Personnel Subsection
Head SUMITA Emi
Clerk KIDA Yoshimi
Clerk HIRAMATSU Naoko
Planning Unit
Head MATSUO Takashi
Planning & Assessment Subsection
Head MATSUO Takashi
Clerk NAKAOHJI Yu

■ ADMINISTRATIVE DIRECTOR

IBUKA Junji

Information Subsection
Head MATSUO Takashi
Clerk NAKAOHJI Yu

■ ACCOUNTING SECTION

Head MINAMI Kenichi
Deputy Head FUJIWARA Koichi
Financial Planning Subsection
Head YAMAGATA Satoshi
Clerk HONDA Takayuki
Facility Management Subsection
Head UMEGAMI Tatsushi
Accounting & Procurement Unit
Head FUJIWARA Koichi
Accounting & Procurement Subunit
Head FUKAO Hidemasa
Chief MURASE Mamiko

■ RESEARCH COOPERATION SECTION

Head BANJOE Yoichi
Deputy Head MAENO Yoshiaki
Research Cooperation Subsection
Head SHINNO Masato
Clerk TAKATORI Yoko
International Affairs Subsection
Head TOKUDA Miki
CCPC Support Unit
Head MAENO Yoshiaki
CCPC Support Subunit
Head MIHARA Kazuaki
Clerk TSUJI Hanako

RESEARCH DEPARTMENT

Program Directors

KADA Ryohei
KUBOTA Jumpei
MOJI Kazuhiko
NAKANO Takanori
TANIGUCHI Makoto

(Program Assistant Directors)

HIYAMA Tetsuya
NAWATA Hiroshi
SAKAI Shoko

Professors

KADA Ryohei	Agricultural Policy, Environmental Economics
MOJI Kazuhiko	Human Ecology
MURAMATSU Shin	Architectural History, Urban History
OSADA Toshiki	Linguistics
SATO Tetsu	Local Environmental Studies, Conservation Ecology
WATANABE Tsugihiko	Irrigation Engineering

Associate Professors

HIYAMA Tetsuya	Ecohydrology
ISHIKAWA Satoshi	Conservation Ecology, Global Fisheries Science
NAWATA Hiroshi	Cultural Anthropology
OKUMIYA Kiyohito	Field Medicine
SAKAI Shoko	Plant Ecology
TANAKA Ueru	Terrestrial Ecosystem Management
UCHIYAMA Junzo	Prehistoric Anthropology

Visiting Professors

HABU Junko	Environmental Anthropology, Historical Ecology, East Asian Archaeology
HIMIYAMA Yukio	Geography
KATO Tsuyoshi	Comparative Sociology
KAWASAKI Masahiro	Atmospheric Chemistry
KOYAMA Shuzo	Archaeology
NAKAGAMI Ken'ichi	Environmental Economics and Policy
NAKAJIMA Tsunao	Ichthyology
NAKATSUKA Takeshi	Environmental Dynamic Analysis, Earth and Space Science
YAMAMURA Norio	Mathematical Ecology
UCHIBORI Motomitsu	Cultural Anthropology

Visiting Associate Professors

FUJITA Noboru	Grassland Ecology
ISHIKAWA Mamoru	Geography
MURAMATSU Koichi	Asian history
SHIRAIWA Takayuki	Glaciology
UMETSU Chieko	Resource and Environmental Economics

Visiting Research Fellows

CONCEPCION, Rogelio Navea	Resources Management
GAIBALLA ADIER, Abdelaziz Karamalla	Remote Sensing
KIMHI, Ayal	Agricultural and Development Economics, Labor and Family Economics
ZAMBA, Batjargal	Meteorology, Hydrology

Senior Project Researchers

C-07 FUJIWARA Junko	Cultural Anthropology
C-07 SAKAI Toru	Satellite Ecology
D-05 TAKAGI Akira	Fisheries Science, Molecular Ecology
R-04 MINAMOTO Toshifumi	Molecular Ecology
R-06 MASUDA Tadayoshi	Agricultural & Resource Economics

Project Researchers

C-07 OSHIMA Kazuhiro	Climatology, Atmospheric Physics
C-08 HAYASHI Kengo	Southeast Aian Architectural History, Urban History
C-08 MATSUDA Hiroko	Southeast Aian Architectural History, Urban History
C-08 MEUTIA, Ami Aminah	Hydrology
C-08 MIMURA Yutaka	Architectural History, Urban History, GIS
C-09 HAMASAKI Hironori	Water Governance, IWRM
C-09 IMAGAWA Chie	Hydrology
C-09 WATANABE Satoko	Soil Science
D-03 KOSAKA Yasuyuki	Ethnobotany
D-03 NOSE Mitsuhiro	Forest Resource Management Ecology
D-04 KATO Satoshi	Forest Ecology
D-04 KODA Ryosuke	Insect Ecology
D-04 TAKANO Takenaka Kohei	Cultural Anthropology, Southeast Asian Studies
D-05 OGAWA Hisashi	Agricultural Systems
D-05 OKAMOTO Yuki	Coral Reef Ecology
D-05 YAP, Minlee	Human Ecology
R-04 JIANG, Hongwei	Social Anthropology
R-04 NISHIMOTO Futoshi	Area Studies
R-04 TOJO Bunpei	Bioacoustics
R-05 ICHIKAWA Kotaro	Cultural Anthropology
R-05 ISHIYAMA Shun	Cultural Anthropology
R-05 NAKAMURA Ryo	Isotope Geochemistry
R-06 SAITO Satoshi	Spatial Econometrics, GIS
R-06 YAOTA Kiyoyuki	Ecological Anthropology
R-07 ISHIMOTO Yudai	Soil Science
R-07 MIYAZAKI Hidetoshi	Rural Development
R-07 SASAKI Yuko	Cultural Anthropology
R-07 SHIMIZU Takao	Geography
R-07 TESHIROGI Koki	

Project Research Associates

C-07 SHIMIZU Hiromi	
C-09 KATO Hisaaki	
C-09 KOYAMA Masami	
D-04 KITAMURA Naoko	
R-05 HAFIZ KOURA, Hafiz Mohamed Fathy	
R-05 MIZUMA Sakiko	
R-05 OKAMOTO Yoko	
R-05 WANG, Na	
R-06 OKAMOTO Takako	
R-07 KIHIRA Tomoe	
E-05 FUKUSHIMA Atsuko	

Research Fellow, NIHU Center for Area Studies / RIHN Initiative for Chinese Environmental Issues (RIHN-China)

FUKUSHI Yuki	Modern Chinese History
--------------	------------------------

Center for Coordination Promotion and Communication (CCPC)

DIRECTOR SATO Yo-ichiro

Heads of Divisions

Division of Research Development	TANIGUCHI Makoto
Division of Promotion	SEKINO Tatsuki
Division of Communication	ABE Ken-ichi

Associate Professors

HANDOH Itsuki C.	Earth Systems Science, Mathematical Modeling
KURATA Takashi	Philosophy
SEKINO Tatsuki	Information Science

Head, Core Research Hub

KUBOTA Jumpei

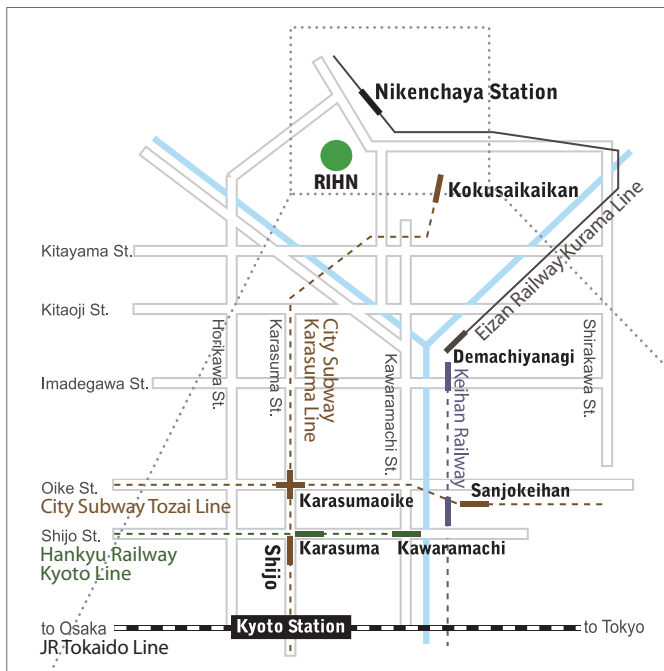
Professors

ABE Ken-ichi	Ecological Anthropology
KUBOTA Jumpei	Hydrology
NAKANO Takanori	Isotope Environmental Studies
SATO Tetsu	Local Environmental Studies, Conservation Ecology
SATO Yo-ichiro	Plant Genetics
TANIGUCHI Makoto	Hydrology

Assistant Professors

KUMAZAWA Terukazu	Environmental Planning, Regional Informatics
NAITO Daisuke	Southeast Asian Area Study, Political Ecology
NILES, Daniel	Geography
SHIMIZU Mayuko	Community-based Sustainable Development
UYAR, Aysun	International Relations, International Political Economy
YASUTOMI Natsuko	Meteorology, Climatology

Access



By City Subway

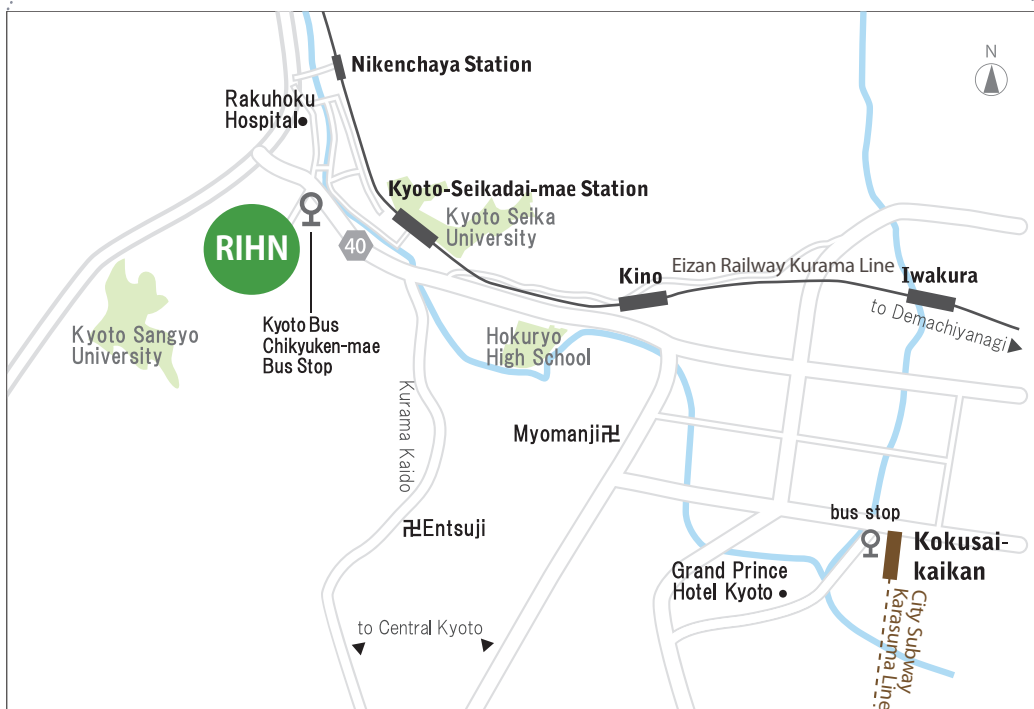
From Kyoto Station, take the Karasuma Line to Kokusai-kaikan Station (the last station), and transfer to Kyoto Bus.

By Kyoto Bus

From Kokusai-kaikan Station, take bus No. 40 or 50 to Chikyuken-mae. RIHN is at the base of the hill to your left.

By Eizan Railway

From Demachiyangi Station in Kyoto City, take the Kurama Line. Exit at Nikenchaya Station. RIHN is a 10 minute walk to the South.



Cover photo:

Wearing her father's sandals, a young girl in the Sudanese savannah glances quickly at the sky as she watches over her family's cattle.

Photo by ISHIYAMA Shun

Back cover photo:

People cross a hanging bridge as the head to market.

Photo by ABE Ken-ichi

RIHN Prospectus 2012-2013

Overseen by: ABE Ken-ichi

Written and edited by: NILES, Daniel and KURATA Takashi

Designed by: OKAZAWA Rina