

## A Guide to the Facilities

Our concept is that the root of global environmental problems lies in human 'culture' in the widest meaning of the word; and that solutions can be found through a culture of improved communications. RIHN aims to elucidate the complex and varied relationships linking humanity and nature. We are trying to synthesize new approaches beyond the formal disciplines of the natural sciences, social sciences and humanities. This requires communication and discussion among researchers. The RIHN campus is designed to provide an environment for that purpose.

Research rooms on the RIHN campus are designed to provide a sense of openness. The design concept is to allow projects implemented to be loosely interconnected as they occur in one large curved space 150 m in overall length. The facilities will help external researchers as well as RIHN research staff to meet one another, since they are designed with the maximization of shared use in mind. In other words, this particular layout enables joint research while maintaining the independence of individual projects. At the center of the main building, a library and computer room are located for the convenience of many users, and three common rooms are provided for casual discussions. On the basement floor, a cluster of fully functional laboratories has been designed with emphasis on convenience for shared use, as with the research rooms.

The separate RIHN House is a guesthouse. The assembly hall and a dining lounge located to the left of the house entrance serve as meeting spaces for the RIHN staff as well as for guests.

Appropriately for an institution researching the global environment, RIHN is housed in a tile-roofed building that fits in with the Kyoto landscape, where as many as possible of the trees already on the site have been retained. Lighting and air-conditioning also employ the latest designs to minimize the building's impact on the environment. The design has won acclaim, receiving awards from the Illumination Engineering Institute of Japan, the Japan Institute of Architects, the Green Building Award from MIPIM Asia, and the Architectural Institute of Japan.



**1 RIHN Main Building**  
The exterior blends perfectly with the landscape.  
**2 Project Room**  
A row of five large spaces can each accommodate three projects. There are skylights in the ceiling, designed to make the most of natural light.





**2F: Administration Floor**

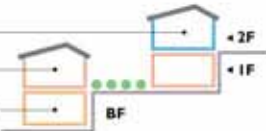
Entrance Hall  
Exhibition Hall  
Lecture Hall  
Administrative Office  
Seminar Rooms  
Dining Hall

**1F: Research Floor**

Project Rooms  
Research Rooms  
Center for Coordination,  
Promotion, and Communication  
Library

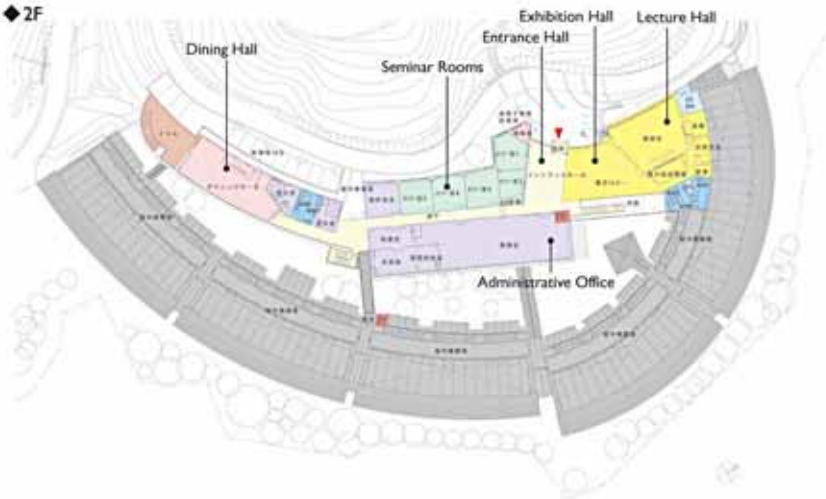
**BF: Laboratory Floor**

Experimental  
Laboratories  
Library Stacks  
Utilities

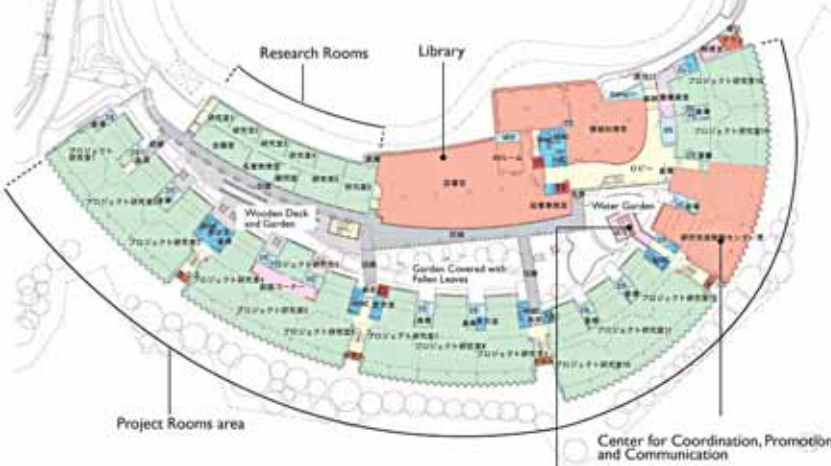


**Floor Plan of RIHN Main Building**

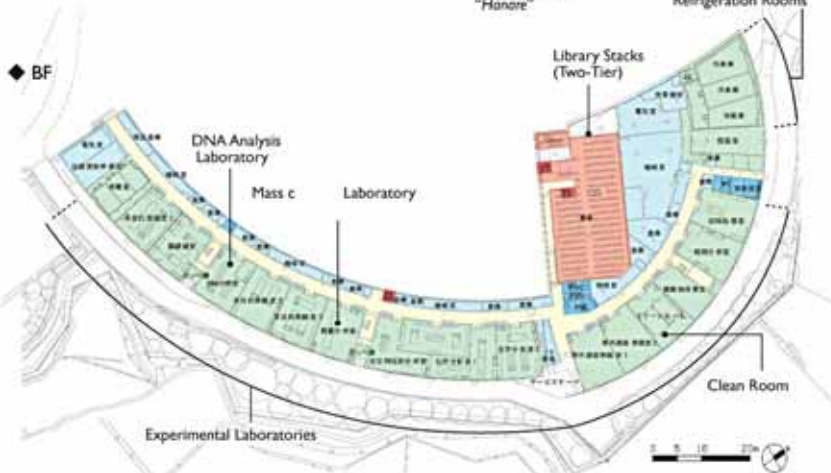
**◆ 2F**



**◆ 1F**



**◆ BF**



**3 Entrance Hall and Exhibition Hall**  
Exhibitions are held to provide information about RIHN activities and completed research

**4 Patio (Wooden Deck and Garden)**  
The patio comprises the Water Garden, the Garden Covered with Fallen Leaves, and the Wooden Deck and Garden to create a space in which humans, buildings, and nature are in harmony. Research rooms, project rooms, and the computer room are arranged on both sides of the patio.

**5 Detached Room "Hanare"**  
A Japanese-style common room that floats on the Water Garden.

**6 Experimental Laboratories**  
The laboratories are designed for the performance of various advanced experiments and are being furnished with equipment such as a state-of-the-art mass spectrometer (see photo) to support research projects.

**7 Assembly Hall, RIHN House**  
Visiting researchers can stay in the RIHN House from a few days to an extended period of time. The house has communal spaces to nurture friendship between guests and RIHN staff.

# Organization

## History

- 1995** April ● The Japan Science Council, Ministry of Education, Science, Sports and Culture, makes a proposal "On the Promotion of Global Environmental Studies."  
"It is necessary to examine the establishment of a core research institute to promote integrated collaborative research aimed at solving global environmental problems."  
July ● A committee is established to consider what form the proposed institute should take.
- 1997** March ● The committee's report is published.  
June ● The Ministerial Council for Global Environmental Conservation agrees "Provisional Measures for Global Environmental Conservation."  
"The Council will investigate the development of a research organization for global environmental studies, such that researchers from a wide range of specializations can conduct integrated research into global environmental problems."
- 1998** April ● Preparatory work begins for establishment of a Research Institute for Global Environmental Studies (provisional title)
- 2000** March ● The preparatory committee proposes the establishment of a Research Institute for Humanity and Nature (provisional title) to promote integrated research projects incorporating the humanities, social sciences and natural sciences through a network of universities and research institutions at home and abroad.  
April ● A Committee to Examine Establishment of the Research Institute for Humanity and Nature (provisional title) is established, together with an office and organization.
- 2001** February ● The committee publishes its final report, "On the Concept of the Research Institute for Humanity and Nature (provisional title)."  
April ● Foundation of the Research Institute for Humanity and Nature.  
RIHN begins its research activities on the campus of Kyoto University under the first director-general, HIDAKA Toshitaka.
- 2002** April ● RIHN relocates to the buildings of the former Kasuga Primary School.
- 2004** April ● With the corporatization of the inter-university research institutes, RIHN becomes a member of the National Institutes for the Humanities (NIHU).
- 2005** December ● Construction of the new facilities is completed.
- 2006** February ● RIHN relocates to the new facilities.  
May ● A ceremony is held to celebrate completion of the new facilities.
- 2007** April ● TACHIMOTO Narifumi is appointed as the second director-general.  
October ● The Research Promotion Center is reorganized as the Center for Coordination, Promotion and Communication (CCPC).



RIHN's first year <April 2001 to March 2002>



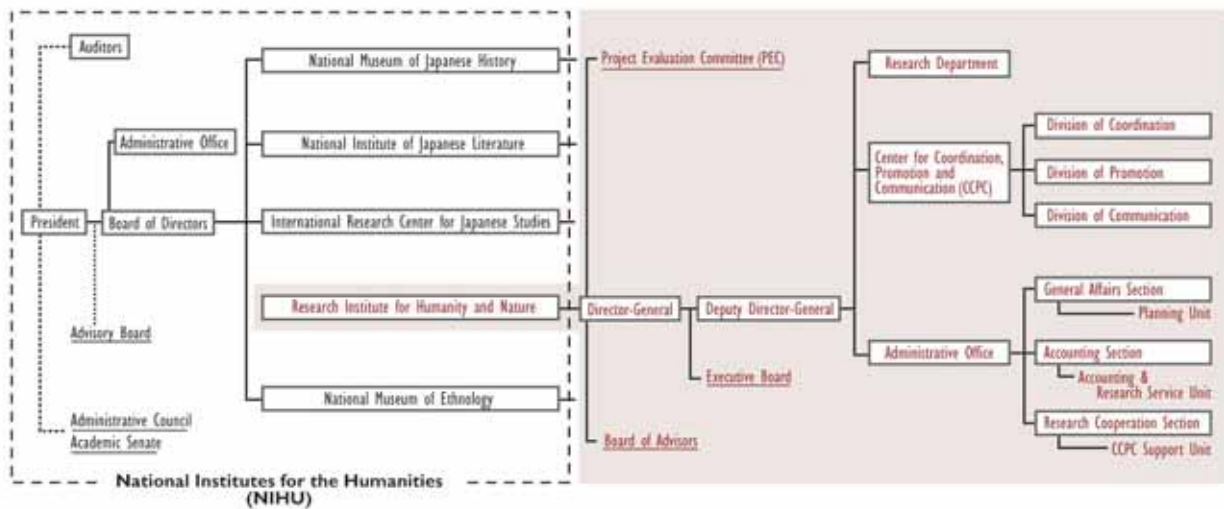
RIHN at the former Kasuga Primary School <April 2002 to January 2006>





The present RIHN <since February 2002>

## ● Organization



## ● Financial Information

### ■ Segmental Financial Information (Fiscal Year 2007)

#### Operating Expenses

Category	Amount (Yen in thousands)
Operating Expenses	2,236,859
Inter-University/Joint Research	1,120,735
Educational/Research Aids	51,905
Outsourced Studies	71,384
Outsourced Operations	7
Personnel	992,827
General Management	149,636
Financial Expenses	83,153
Miscellaneous	34
<b>Total Expenses</b>	<b>2,469,683</b>

Operational Balance

#### Operating Expenses

Category	Amount (Yen in thousands)
Subsidy for Operation	2,171,024
Contract Research, etc.	84,681
Contract Operations, etc.	7
Donations	22,800
Others	251,409
<b>Total Earnings</b>	<b>2,529,923</b>

60,240

### ■ External Sources of Funding (Fiscal Year 2007)

Category	Amount (Yen in thousands)
Fund for Promotion of Academic and Industrial Collaboration	84,682
Grants-in-Aids for Scientific Research	133,990
Donations for Research	33,200

\* Fund for Promotion of Academic and Industrial Collaboration is the sum of contract research and joint research expenses.

## Board and Committees

### Board of Advisors

■ Deliberates on important matters relative to personnel, planning, administration and operation of the institute.

**FUJII Yoshiyuki**  
Director-General, National Institute of Polar Research,  
Research Organization of Information and Systems

**FURUSAWA Iwao**  
President, Tottori University of Environmental Studies

**IWASAKA Yasunobu**  
Professor, Kanazawa University Frontier Science Organization

**SHIRAHATA Yozaburo**  
Professor, Research Department,  
International Research Center for Japanese Studies, NIHU

**UEDA Hiroshi**  
Director, Hydrospheric Atmospheric Research Center,  
Nagoya University

**WASHIDA Kiyokazu**  
President, Osaka University

**YOKOYAMA Toshio**  
Vice President, Kyoto University  
Professor, Kyoto University  
Graduate School of Global Environmental Studies

**YONEMOTO Shohei**  
Professor, Research Center for Advanced Science and Technology,  
University of Tokyo

**AKIMICHI Tomoya**

Deputy Director-General, RIHN  
Program Director, RIHN  
Director, Center for Coordination, Promotion and Communication, RIHN

**ABE Ken-ichi**  
Professor, Center for Coordination, Promotion and Communication, RIHN

**HAYASAKA Tadahiro**  
Program Director, RIHN

**SATO Yo-ichiro**  
Program Director, RIHN

**WATANABE Tsugihiko**  
Program Director, RIHN

**YUMOTO Takakazu**  
Program Director, RIHN

### Project Evaluation Committee (PEC)

■ Deliberates professionally on necessary matters relative to specific collaborative project of the institute.

#### (Domestic)

**FURUSAWA Iwao**  
President, Tottori University of Environmental Studies

**IWASAKA Yasunobu**  
Professor, Kanazawa University Frontier Science Organization

**NIWA Masako**  
Professor Emeritus, Nara Women's University

**OHTSUKA Ryutaro**  
President, National Institute for Environmental Studies

**TANAKA Koji**  
Director, Center for Integrated Area Studies, Kyoto University

**UETA Kazuhiro**  
Professor, Graduate School of Economics,  
Kyoto University Graduate School of Global Environmental Studies

**YAMAGATA Toshio**  
Professor, School of Science, The University of Tokyo

**YOKOYAMA Toshio**  
Vice-President, Kyoto University;  
Professor, Kyoto University  
Graduate School of Global Environment Studies

#### (Overseas)

**BELLWOOD, Peter**  
Professor, Archaeology and Natural History,  
The Australian National University, Australia

**FU, Congbin**  
Director, START Regional Center for Temperate East Asia, Institute  
of Atmospheric Physics, Chinese Academy of Sciences, China

**IKAWA-SMITH Fumiko**  
Former Associate Vice Principal, McGill University, Canada

**LOVEJOY, Thomas E.**  
President, The H. John Heinz III Center for Science,  
Economics and the Environment, USA

**OHMURA Atsumu**  
Professor, Swiss Federal Institute of Technology, Switzerland

### Executive Board

■ Discuss important matters relative to administrative operation of the institute.

**TACHIMOTO Narifumi**  
Director-General, RIHN

**AKIMICHI Tomoya**  
Deputy Director-General, RIHN  
Program Director, RIHN  
Director, Center for Coordination,  
Promotion and Communication, RIHN

**HAYASAKA Tadahiro**  
Program Director, RIHN

**SATO Yo-ichiro**  
Program Director, RIHN

**WATANABE Tsugihiko**  
Program Director, RIHN

**YUMOTO Takakazu**  
Program Director, RIHN

**FURUYA Isamu**  
Director, Administrative Office, RIHN

RIHN organizes other committees, if  
necessary, for smooth operation.

### Senior Advisor

HIDAKA Toshitaka

### Emeritus Professors

NAKANISHI Masami    NAKAWO Masayoshi  
HIDAKA Toshitaka    FUKUSHIMA Yoshihiro  
WADA Eitaro

### Staff Members

■ **DIRECTOR-GENERAL** TACHIMOTO Narifumi

■ **DEPUTY DIRECTOR-GENERAL** AKIMICHI Tomoya

#### ADMINISTRATIVE OFFICE

##### GENERAL AFFAIRS SECTION

Head UEMURA Tsuyoshi

Deputy Head ISHII Koji

General Affairs Subsection

Head TSUNEMI Hiroyuki

Clerk ISHII Keisuke

Personnel Subsection

Head MIZUTANI Yukihiko

Chief INABA Shigeo

Clerk NAKANO Hiroyo

Planning Unit

Head ISHII Koji

Planning & Assessment Subsection

Head SHINDO Kenji

Chief SHIBUTANI Ichiro

Information Subsection

Head SHINDO Kenji

#### Administrative Director FURUYA Isamu

##### FINANCE SECTION

Head NANBU Shinichi

Deputy Head NAKAKUBO Takao

Budgeting Subsection

Head OKUMURA Azuma

Clerk YANO Tetsuya

Facility Management Subsection

Head NISHIKAWA Tomonobu

Accounting & Research Service Unit

Head NAKAKUBO Takao

Accounting & Research Service Subunit

Head SATO Fumiaki

Chief ISEMOTO Takashi

Chief YAMABAYASHI Nobuko

##### RESEARCH COOPERATION SECTION

Head KAWAMITSU Nobuo

Deputy Head ISHIDA Yataro

Research Cooperation Subsection

Head OHI Shunji

Clerk MICHİYAMA Satoko

International Affairs Subsection

Head OGATA Rika

CCPC Support Unit

Head ISHIDA Yataro

CCPC Support Subunit

Head ONO Futoshi



## RESEARCH DEPARTMENT

\*in alphabetical order

### ■Program Directors

AKIMICHI Tomoya  
HAYASAKA Tadahiro  
SATO Yo-ichiro  
WATANABE Tsugihiko  
YUMOTO Takakazu

### ■Professors

OSADA Toshiaki Linguistics  
KAWABATA Zen'ichiro Microbial Ecology  
KINOSHITA Tetsuya  
History of Chinese philosophy  
SATO Yo-ichiro Plant Genetics  
TAKASO Tokushiro Plant Morphology  
NAKANO Takanori Isotope Environmental Studies  
MOJI Kazuhiko  
Human ecology, population health in the tropics  
YAMAMURA Norio Mathematical Ecology  
YUMOTO Takakazu Plant Ecology

### ■Associate Professors

ICHIKAWA Masahiro Area Studies  
KUBOTA Jumpei Forest Hydrology  
NAWATA Hiroshi Cultural Anthropology  
OKUMIYA Kiyohito Field Medicine  
SAKAI Shoko Plant Ecology  
SEKINO Tatsuki Information Science  
SHIRAIWA Takayuki Glaciology  
TANIGUCHI Makoto Hydrology  
UCHIYAMA Junzo Prehistoric anthropology  
UMETSU Chieko  
Resource & Environmental Economics  
ZHENG, Yuejun Environmental Statistics

### ■Assistant Professors

ENDO Takahiro Political science  
KATO Yuzo Legal History  
SAEKI Tazu Atmospheric Physics  
YATAGAI Akiyo Meteorology, Climatology

### ■Visiting Professors

INOUE Gen Atmospheric Chemistry  
INOUE Takashi TV Documentary Production  
MITSUTANI Takumi Dendrochronology  
MURAMATSU Shin  
Architectural History, Urban History

### ■Visiting Associate Professor

WATANABE Chikako E. Assyriology

### ■Visiting Research Fellows

AJITHPRASAD, Pottentavida Archaeology  
BAUSCH, Ilona Renate Archaeology  
CHOY, Yee Keong  
Environmental and International Economics  
DELINOM Robert M. Hydrogeology  
EVANS, Tom Geography  
FLINT, Lawrence S.  
African Study, Development Study  
MULENGA, Chileshe Leonard  
Economic Geography  
SHAMOV, Vladimir V. Hydrology

### ■Senior Project Researchers

CHENGZHI Central Eurasian History  
HASEGAWA Shigeaki Theoretical Ecology  
KATSUYAMA Masanori Forest Hydrology  
KIMOTO Yukitoshi Plant Morphology  
KUME Takashi Soil Hydrology  
LEKPRICHAKUL, Thamana  
Environmental & Health Economics  
MINAMOTO Toshifumi Molecular Ecology  
MORI Wakaha Linguistics  
NODZU Masato Meteorology, Climatology  
ONISHI Masayuki Linguistic Typology  
ONISHI Takeo Hydrology  
TANNO Kenichi Archaeobotany, Crop Evolution

### ■Project Researchers

CAI, Guoxi International health & public health  
HAYASHI Naoki Rural Planning  
HONJO Mie Microbial Ecology  
HOSOYA Leo Aoi Archaeobotany, Ethnoarchaeology  
ICHIJO Tomoaki Environmental Microbiology  
ICHIKAWA Tomo History of medicine  
INOUE Mitsuyuki East Asian History  
ISHIMARU Eriko Zooarchaeology  
ISHIMOTO Yudai Ecological Anthropology  
ISHINE Masayuki Field medicine, Geriatrics  
ISHIYAMA Shun Cultural Anthropology  
IWATANI Hirofumi Cultural Anthropology  
KAWAMOTO Haruko Radar meteorology  
KAWASE Daiju Plant Ecology  
KIMURA Emi Culturehistory of Japanese  
KISHIMOTO Keiko Entomology  
KOIZUMI Miyako Ethnobotany  
KOSAKA Yasuyuki Ethnobotany  
KURATA Takashi Philosophy  
MAEKAWA Ai Cultural Anthropology  
MATSUKAWA Taichi Sociology

MIYAZAKI Hidetoshi Soil Science  
MURAKAMI Yumiko Archaeology  
NAKAGAWA Masato Plant Ecology  
NAKAMURA Oki Archaeology  
NAKAMURA Ryo Cultural Anthropology  
NARAMA Chiyuki Physical Geography  
NOMURA Naofumi Plant Ecology  
SAKAMOTO Ryota Public Health  
SASAKI Naoko Vegetation History  
SEO Akihiro Plant Taxonomy  
SHIRAKI Yohei Analysis of urban climate  
TAKAGI Mayumi Literary representation  
TANAKA Katsunori  
Plant Cell Genetics, Plant Breeding, Ethnobotany  
TERAMURA Hirofumi Archaeology  
TOJO Bunpei Area studies  
TSUJI Takashi Ecological anthropology  
TSUJINO Riyou Plant Ecology  
UCHII Kimiko Microbial Ecology  
UESUGI Akinori Archaeology  
WATANABE Mitsuko Physical Geography  
YAMAMOTO Keiko Gravity satellite analysis  
YAMANAKA Hiroki Aquatic Ecology  
YASUMOTO Jun Groundwater engineering  
YASUNARI Teppei Ice core & Meteorology  
ZEBALLOS VELARDE, Carlos Renzo  
Urban Environmental Planning

### ■Project Research Associates

FUJIMOTO Marika  
HOSOI Mayumi  
IBUKI Naomi  
IRIE Yuki  
KAMURA Nozomi  
KAWAGUCHI Tamaki  
MUKASA Akiko  
OKAMOTO Takako  
OKITA Hiroko  
OTANI Megumi  
SAITO Susumu  
SONODA Takeru  
TAKAHASHI Keiko  
YAMAZAKI Kahori  
YASUDA Keiko  
YODEN Makoto

### ■Research Fellow, NIHU Center for Area Studies / RIHN Initiative for Chinese Environmental Issues (RIHN-China)

KODAMA Kanako Anthropology

## Center for Coordination, Promotion, and Communication (CCPC)

■Director AKIMICHI Tomoya

### ■Professor

AKIMICHI Tomoya Ecological anthropology, Ethno-biology  
ABE Ken-ichi Integrated area study / Director, Division of Communication  
SAITO Kiyooki Journalism, Study of nature  
NAKANO Takanori Isotope Environmental Studies  
HAYASAKA Tadahiro  
Atmospheric physics / Director, Division of Promotion  
WATANABE Tsugihiko  
Irrigation engineering / Director, Division of Coordination

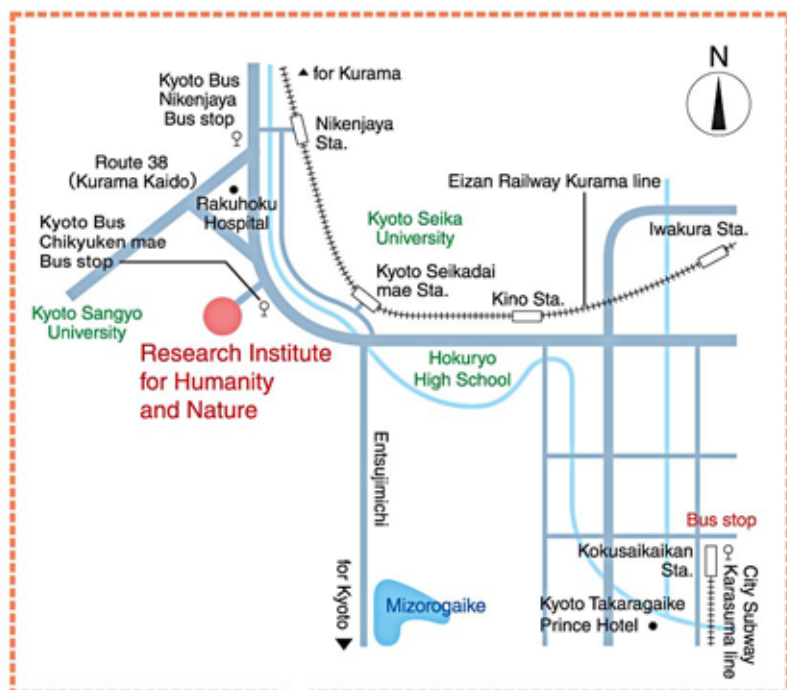
■Associate Professor

SEKINO Tatsuki Information Science

■Assistant Professor

KOHMATSU Yukihiko Ecology, Geography

# Access



## By City Subway

(<http://www.city.kyoto.jp/koho/eng/access/>)

From Kyoto Station, take the Karasuma line to Kokusaikaikan Station (Kyoto International Conference Hall), and transfer to Kyoto Bus.

## By Kyoto Bus

From Kokusaikaikan Station, take bus No.40 or 50 to Chikyuken-mae.

## By Eizan Railway

(<http://www.pref.kyoto.jp/visitkyoto/en/area/kyoto/course/09/index.html/>)

From Demachiyana Station, take the Kurama line to Nikenjaya Station and walk 15 minutes.

## By Car, Taxi

From Kyoto International Conference Hall, take Route 40 to Nikenjaya.