

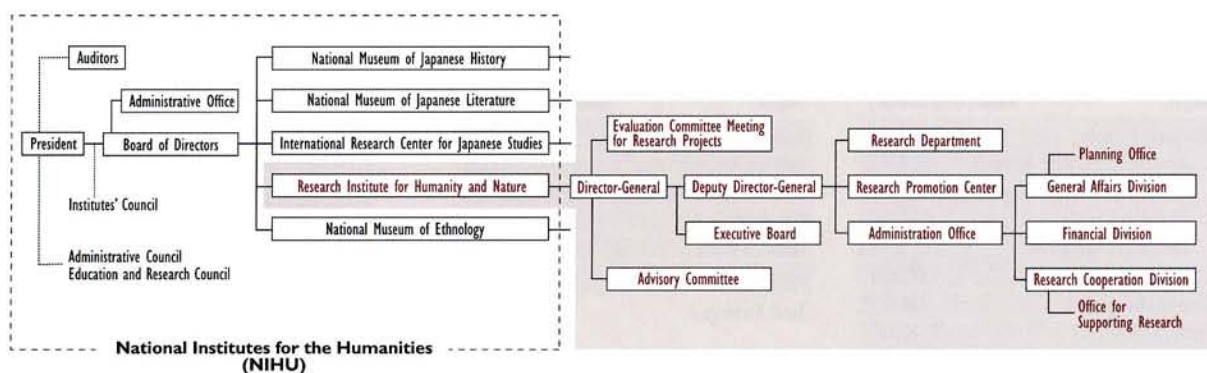
Organization

History

Fiscal Year

- 1995** ● A proposal of Japan Science Council of Ministry of Education, Science, Sports and Culture: "On the promotion of the global environmental sciences" (April). "It is necessary to examine the founding of a central research organization that will promote integrated cooperative research toward the solution of global environmental problems."
- 1997** ● Investigation of the possible forms that the proposed research organization for the global environmental sciences may take. The Ministry of Education, Science, Sports and Culture established the Chosa-kyoryokusha-kaigi (Committee of Investigation Collaborators) for the establishment of a central research organization and made a budget for the concrete investigations.
 - The Ministerial Council for the global environmental conservation made an agreement on the "Provisional measure for global environmental conservation," in preparation for the UN General Assembly's Special Session on the Environment and Development (June). "The Council will investigate the means of possible adjustments necessary for the research organization to carry out integrated research in broad academic fields in addressing global environmental problems."
- 1998** ● Preparatory work for the establishment of the "Research Institute for the Global Environment Sciences" (tentative).
- 1999** ● The preparation Committee of the Institute compiled a report in March 2000 and proposed the foundation of the "Research Institute for the Global Environment Sciences" (tentative) for promoting integrated research projects, by amalgamating various broad disciplines from humanity and social sciences to natural sciences and using a network to be formed among workers in universities and research institutes within and outside the country.
- 2000** ● Investigation for the founding of the "Research Institute for Humanity and Nature" (tentative). Report "On the Fabric of the Research Institute for Humanity and Nature" (tentative) was completed in February.
- 2001** ● Foundation of the Research Institute for Humanity and Nature. Following the execution of the government ordinance (No.151 of the year 2001) amending part of the ordinance on the law concerning the establishment of national schools (Kokuritsu-gakko-settchi-ho-shikorei), the Research Institute for Humanity and Nature was founded (Director-General: Professor Toshitaka Hidaka). The Institute commenced its research activity on the campus of Kyoto University.
- 2002** ● The Institute moved to the site of the old Kasuga Primary School of Kyoto City.
- 2004** ● Inter-University Research Institution Corporation, National Institutes for the Humanities (NIHU) established on April 1st based on the National University Corporation Law. RIHN became one of the member institutes of the NIHU.
- 2005** ● The new facilities were completed in December.
- 2006** ● The institute moved during February 11-19, 2006. RIHN New Facilities Inaugural Ceremony was held on May 26, 2006.

Organization



Board and Committees

*in alphabetical order

Advisory Committee

Deliberates on important matters relative to personnel, planning, administration and operation of the institute.

FUJII, Yoshiyuki

Director-General, National Institute of Polar Research,
Research Organization of Information and Systems

FURUSAWA, Iwao

President, Tottori University of Environmental Studies

IWASAKA, Yasunobu

Research professor, Kanazawa University Frontier Science
Organization

SHIRAHATA, Yozaburo

Professor, Research Department, International
Research Center for Japanese Studies, NIHU

UEDA, Hiroshi

Director, Hydrospheric Atomspheric Research Center,
Nagoya University

YOKOYAMA, Toshio

Vice-President, Kyoto University
Professor, Kyoto University Graduate School of
Global Environmental Studies

WASHIDA, Kiyokazu

Vice-President, Osaka University

AKIMICHI, Tomoya

Deputy Director-General, RIHN
Program Director, RIHN

FUKUSHIMA, Yoshihiro

Program Director, RIHN

HAYASAKA, Tadahiro

Program Director, RIHN

NAKAWO, Masayoshi

Program Director, RIHN

SAITO, Kiyooki

Director, Research Promotion Center, RIHN

SATO, Yo-Ichiro

Program Director, RIHN

Evaluation Committee for Resarch Projects

Undertakes evaluation of the feasibility studies and selects research projects to be forwarded to full-scale research;
interim and post-evaluation of the research subjects under full-scale research.

EHLERS, Eckart

Professor Emeritus, University of Bonn, Germany

FURUSAWA, Iwao

President, Tottori University of Environmental
Studies

HEINTZENBERG, Jost

Director, Institute for Tropospheric Research,
Germany

IKAWA-Smith, Fumiko

Former Associate Vice Principal, McGill University,
Canada

IWASA, Yoh

Professor, Graduate School of Sciences,
Kyushu University

IWASAKA, Yasunobu

Professor, Kanazawa University Frontier Science
Organization

KIKKAWA, Jiro

Professor Emeritus, The University of Queensland,
Australia

LEGENBRE, Louis

CNRS Research Professor, Director,
Villefranche Oceanography Laboratory, France

MURAKAMI, Yoichiro

Professor, Division of Comparative Culture,
International Christian University

NIWA, Masako

Professor Emeritus, Former President, Nara
Women's University

OHMURA, Atsumu

Professor, Swiss Federal Institute of Technology,
Switzerland

OTSUKA, Ryutaro

President, National Institute for Environmental
Studies

SAWA, Takamitsu

Professor, Nitsumeikan University

SASAKI, Toshihiro

Executive Director, The Asahi Shimbun Social
Welfare Organization

SUN, Honglie

Professor, Institute of Geographical Science and Natural
Resources Research, Chinese Academy of Science,
People's Republic of China.

TANAKA, Koji

Director, Center for Integrated Area Studies, Kyoto
University

TANAKA, Masayuki

Specialized Professor, Tohoku Institute of Technology

Executive Board

Discusses important matters of the institute.

TACHIMOTO, Narifumi

Director-General, RIHN

AKIMICHI, Tomoya

Deputy Director-General, RIHN

FUKUSHIMA, Yoshihiro

Program Director, RIHN

HAYAKAWA, Tadahiro

Program Director, RIHN

NAKAWO, Masayoshi

Program Director, RIHN

SAITO, Kiyooki

Director, Research Promotion Center, RIHN

SATO, Yo-Ichiro

Program Director, RIHN

FURUYA, Isamu

Director, Administration Office, RIHN

RIHN organizes other committees,
if necessary, for smooth operation.

Financial Information

Segmental Financial Information (Fiscal Year 2006)

Operating Expenses

Category	Amount (Yen in thousands)
Operating Expenses	2,027,879
Inter-University/Joint Research	929,958
Educational/Research Aids	33,701
Outsourced Studies	71,385
Outsourced Operations	8
Personnel	992,827
General Management	144,615
Financial Expenses	83,163
Total Expenses	2,255,657

Operating Expenses

Category	Amount (Yen in thousands)
Subsidy for Operation	2,162,542
Contract Research, etc.	84,682
Contract Operations, etc.	8
Donations	22,800
Financial Profit	10
Miscellaneous	45,890
Total Earnings	2,315,932

Operational Balance (as of May 15, 2007)

60,275

External Sources of Funding

(Fiscal Year 2006)

Category	Amount (Yen in thousands)
Fund for Promotion of Academic and Industrial Collaboration	84,682
Grants-in-Aids for Scientific Research	120,010
Donations for Research	33,200

* Fund for Promotion of Academic and
Industrial Collaboration is the sum of contract
research and joint research expenses.

Staff Members

*in alphabetical order

DIRECTOR-GENERAL

TACHIMOTO, Narifumi

DEPUTY DIRECTOR-GENERAL

AKIMICHI, Tomoya
ADVISER
 HIDAKA, Toshitaka

PROFESSORS EMERITUS

NAKANISHI, Masami
 HIDAKA, Toshitaka
 WADA, Eitaro

RESEARCH DEPARTMENT

* Iniomote Island Branch

Program Directors

AKIMICHI, Tomoya
 FUKUSHIMA, Yoshihiro
 HAYASAKA, Tadaihiro
 NAKAWO Masayoshi
 SATO, Yo-Ichiro

Professors

AKIMICHI, Tomoya
 FUKUSHIMA, Yoshihiro
 HAYASAKA, Tadaihiro
 KAWABATA, Zen'ichiro
 KINOSHITA, Tetsuya
 NAKANO, Takanori
 NAKAWO, Masayoshi
 OSADA, Toshiki
 SATO, Yo-Ichiro
 TAKASO, Tokushiro
 WATANABE, Tsugihiko
 YUMOTO, Takakazu

Associate Professors

ICHIKAWA, Masahiro
 KUBOTA, Jumpei
 OKUMIYA, Kiyohito
 SHIRAIWA, Takayuki
 TANIGUCHI, Makoto
 UCHIYAMA, Junzo
 UMETSU, Chieko
 YACHI, Shigeo
 ZHENG, Yuejun

Assistant Professors

ENDO, Takahiro
 KATO, Yuzo
 SAEKI, Tazu
 YATAGAI, Akiyo

Visiting Professors

INOUE, Takashi
 MOJI, Kazuhiko
 YAMAMURA, Norio

Visiting Associate Professors

SATO, Tadashi

Invited Research Fellows

BAUSCH, Ilona
 HUANG, Shaopeng
 MALLAH, Qasid Hussain
 MWALE, Moses
 SIRINGAN, Fernando Pascual

Project Senior Researchers

CHENG, Zhi
 FUKUNAGA, Kenji
 HATADA, Aya
 KATSUYAMA, Masanori
 KIMOTO, Yukitoshi*
 LEKPRICHAKUL, Thamana
 MINAMOTO, Toshifumi
 MORI, Wakaha
 ONISHI, Akio
 ONISHI, Hideyuki
 ONISHI, Msayuki
 ONISHI, Takeo
 SATO, Yoshinobu
 TAKAHASHI, Atsuhiko
 TANNO, Kenichi
 UMEZAWA, Yu
 YAMASHITA, Satoshi

Project Researchers

ANOD, Atsushi
 BORRÉ, Caroline
 HANDOH, Itsuki C.
 HASHIMURA, Osamu
 HAYASHI, Naoki
 HONJO, Mie
 HOSOYA, Leo Aoi
 HYODO, Fujio
 KAWAMOTO, Haruko
 KURATA, Takashi
 LINDSTRÖM, Kati
 MATSUKAWA, Taichi
 MIYAZAKI, Hidetoshi
 MURAKAMI, Yumiko
 NAGATANI, Chiyoko
 NAKAGAWA, Masato
 NOMURA, Naofumi
 OGAWA, Akiko
 OISHI, Taro
 SAITO, Haruo
 SASAKI, Naoko
 SEO, Akihiro
 TAKAGI, Mayumi
 TANAKA, Katsunori
 TERAMURA, Hirofumi
 TSUJINO, Ryo
 UCHII, Kimiko
 UESUGI, Akinori
 WATANABE, Mitsuko
 YAMANAKA, Hiroki
 ZEBALLOS Velarde, Carlos Renzo

Project Research Associates

HOSOI, Mayumi
 IBUKI, Naomi
 IRIE, Yuki
 ISHITOBI, Tomotoshi
 JAGO-ON, Karen Ann Bianet
 KAWAGUCHI, Tamaki
 KUROKAWA, Shoko
 MATSUMURA, Ayako
 OKITA, Hiroko
 SHIMIZU, Hiromi
 SONODA, Takeru
 TAKAHASHI, Keiko
 TAKESAWA, Fumika
 YAMAZAKI, Kahori
 YASUDA, Keiko*

Reseachers (part-time)

NISHIMOTO, Futoshi
 TERASHIMA, Motoki

Visiting reseachers

FUJIHARA, Yoichi
 IGETA, Akitake
 KOBAYASHI, Yutaka
 MIYOSHI, Takao
 SATAKE, Sinsuke
 TA, wangquan
 TANAKA, Takuya

Clerks

AKEDO, Masako
 FUKETA, Yoshimi
 IMAI, Mayumi
 KITA, Yukiko
 KOBORI, Masako
 SUZUKI, Rieko
 TAIRA, Hiroyo*
 TANAKA, Nozomi

Technicians

OGURA, Asayo
 SAITO, Yu

ADMINISTRATION OFFICE

Director FURUYA, Isamu

GENERAL AFFAIRS DIVISION

Head INOUE, Akio

Deputy Head ISHII, Koji

• General Affairs Section

Head TSUNEMI, Hiroyuki

Clerk OKITA, Masaki

Clerical assistants

MORITA, Migusa

Secretary HIRAI, Hisami

• Personnel Section

Head MIZUTANI, Yukihiko

Clerks MATSUYAMA, Hiroyo

SETA, Yoriko

Clerical assistants

IKEDA, Yasuyo

UENO, Risa

• Planning Office

Head ISHII, Koji

• Planning and Assessment Section

Head SHINDO, Kenji

Chief SHIBUTANI, Ichiro

Clerical assistant

MURATA, Chiyo

• Information Section

Head SHINDO, Kenji

Technical assistants

HASHIMOTO, Akito

KAGEYAMA, Miyuki

MATSUDA, Kaeko

ACCOUNTING DIVISION

Head NANBU, Shinichi

Deputy Head

NISHIGAKI, Muneharu

• Budgeting Section

Head URASHIMA, Shinji

Clerk YANO, Tetsuya

Clerical assistant

YOKOTA, Hifumi

• Accounting Section

Head SATO, Fumiaki

Clerical assistants

AKAI, Chihiro

SAKURAGI, Chie

TANAKA, Yoshio

TANAKA, Yuka

YMAGUCHI, Nanami

• Facility and Managements Section

Head SHINO, Ayumi

RESEARCH COOPERATION DIVISION

Head KAWAMITSU, Nobuo

Deputy Head MAENO, Masayo

• Research Cooperation Section

Head MATSUURA, Yukihiko

Chief OHSHIMA, Minako

Clerk MICHYAMA, Satoko

• International Affairs Section

Head OGATA, Rika

Clerical assistant

UCHIKADO, Megumi

• Office for Supporting Research

Head MAENO, Masayo

• Section for Supporting Research

Head MAENO, Masayo

• Supporting Research Section

Head ONO, Futoshi

Chief ISEMOTO, Takashi

Clerical assistants

HORIGOSHI, Kanako

MAEDA, Kazue

MORI, Masayo

OKAMOTO, Yoko

TSUJI, Miyako

WAKASHIRO, Kiyoko

YAMAZAKI, Yasuko

YONEOKA, Yoshimi

RESEARCH PROMOTION CENTER

Director, Professor

SAITO, Kiyooki

Concurrent Professor

NAKANO, Takanori

Associate Professors

MOMOKI, Akiko
 SEKINO, Tatsuki
 YOSHIMURA, Mitsunori

Assistant Professor

KOHMATSU, Yukihiko

Clerks

IWASAKI, Miya

Technicians

ISEKI, Naomasa

KOKADO, Emi

KOBAYASHI, Toshinori

NAGANO, Takanori

Access

By Car, Taxi

From Kyoto International Conference Hall, in Route 40, to Nikenjaya.

By City Subway

(<http://www.city.kyoto.jp/koho/eng/access/>)
From Kyoto Station, Take subway Karasuma line to Kokusaikaikan Station (Kyoto International Conference Hall), and Transfer to Kyoto Bus.

By Eizan Railway

(<http://www.pref.kyoto.jp/visitkyoto/en/area/kyoto/course/09/index.html/>)
From Demachiyanagi station, Take railway Kurama line to Nikenjaya Station and walk 15 minutes.

By Kyoto Bus

From Kokusaikaikan Station. Take No.40,50 to Chikyuken-mae.

