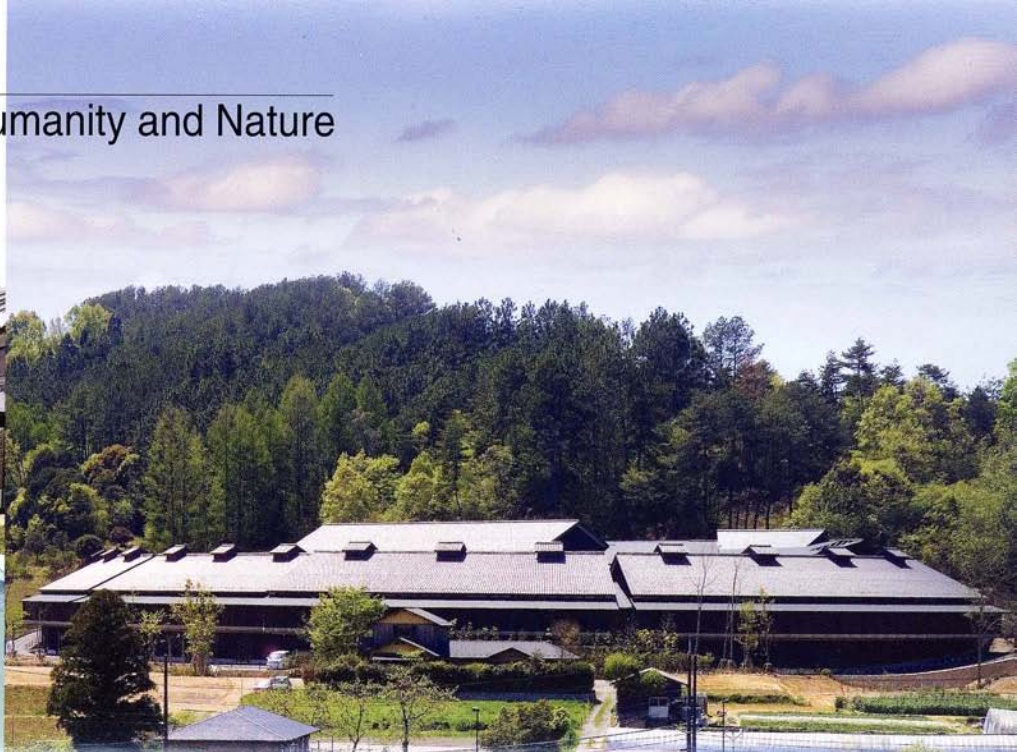


National Institutes for the Humanities



Research Institute for Humanity and Nature



Message from the Director-General

RIHN's basic proposition is that aspects of human culture are at the root of global environmental issues. Based on it, RIHN conducts research on how people and nature have fundamentally interacted up until this point.

As human societies become more affluent, a number of environmental issues are becoming more serious. RIHN is taking up the challenge of addressing those issues through a program of collective research activities, with the aim of making a meaningful contribution toward development of an enduring societal structure that can realise sustainable human life and well-being, i.e., futurability. As the world's population relentlessly expands, environmental concerns are becoming ever more acute. We seek, through collective research into these environmental issues on a global scale, to play a significant role in the development of a sustainable society for the future.

One of the main characteristics of RIHN is its "project" based approach to research. A typical RIHN research project has a life cycle of 5 years. Nineteen research projects have been so far budgeted and, in 2007, 14 Full Research projects are ongoing.

RIHN will be further committed to collaborative research projects on global environmental issues in the coming decades, disseminating the research results to the public.



April 2007

TACHIMOTO, Narifumi

Director-General

Research Institute for Humanity and Nature



Characteristics of RIHN

Integration

RIHN is developing a new, integrated approach to global environmental issues that involves bringing together knowledge and expertise in a variety of disciplines, including natural sciences, social sciences, humanities studies, engineering, land and food sciences, medical sciences, etc.

Globalization

RIHN carries out its research projects in close coordination with both international and domestic research organisations. A number of non-Japanese researchers are involved in each research project.

Fluidity

RIHN adopts the "Project-based Format" that facilitates fluidity of researchers and research subjects within the institute.

Leadership

Staff members at RIHN are expected to play leading roles in global environmental programs through cooperation with national and international research institutes and researchers.

RIHN's Research Projects in Fiscal 2007

Each project starts with an Incubation Study (IS). It is then tested in the Feasibility Study stage (FS), which generally lasts about one year. If evaluation of the Feasibility Study results verifies that the project meets the suitability criteria, it undergoes one year of Pre-Research (PR) before proceeding to the full-scale study stage named Full Research (FR), which lasts about 5 years.

- FR 5th year** Recent Rapid Changes of Water Circulation in the Yellow River and its Effects on the Environment (Leader: FUKUSHIMA, Yoshihiro)
- FR 5th year** Sustainability and Biodiversity Assessment on Forest Utilisation Options (Leader: ICHIKAWA, Masahiro)
- FR 5th year** A Trans-Disciplinary Study on the Regional Eco-History in Tropical Monsoon Asia: 1945-2005 (Leader: AKIMICHI, Tomoya)
- FR 4th year** Interactions between the Natural Environment and Human Society Systems in Subtropical Islands (Leader: TAKASO, Tokushiro)
- FR 4th year** Interactions between the Environmental Quality of a Watershed and Environmental Consciousness: with Reference to Environmental Changes Caused by Human Use of Land and Water Resources (Leader: YOSHIOKA, Takahito)
- FR 3rd year** Human Activities in North-Eastern Asia and Their Impact on Biological Productivity in the North Pacific Ocean (Leader: SHIRAIWA, Takayuki)
- FR 2nd year** Human Impacts on Urban Subsurface Environments (Leader: TANIGUCHI, Makoto)
- FR 2nd year** When Agriculture Destroys the Environment (Leader: SATO, Yo-ichiro)
- FR 2nd year** A New Cultural and Historical Exploration into Human-Nature Relationships in the Japanese Archipelago (Leader: YUMOTO, Takakazu)
- FR 1st year** Vulnerability and Resilience of Social-Ecological Systems (Leader: UMETSU, Chieko)
- FR 1st year** Environmental Change and the Indus Civilization (Leader: OSADA, Toshiki)
- FR 1st year** Neolithisation and Modernisation: Landscape History of East Asian Inland Seas (Leader: UCHIYAMA, Junzo)
- FR 1st year** Historical Interactions between a Hybrid Society of Ethnic Groups and the Natural Environment in a Semi-arid Region, Central Eurasia (Leader: KUBOTA, Jumpei)
- FR 1st year** Effects of Environmental Change on Interactions between Pathogens and Humans (Leader: KAWABATA, Zen'ichiro)
- PR** Human Life, Aging, and Disease in High-Altitude Environments: Physio-medical, Ecological and Cultural Adaptation in the Three Great "Highland Civilizations" (Leader: OKUMIYA, Kiyohito)
- PR** Environmental Changes and Vector-borne Diseases in Tropical Asia and Oceania (Leader: MOJI, Kazuhiko)
- PR** Collapse and Restoration of Ecosystem Networks Under Human Activities (Leader: YAMAMURA, Norio)
- FS** Relationships between Human Activities and Atmospheric Changes: Possibilities of a Harmonious Society for Environmental Issues in the East (Leader: ZHENG, Yuejun)
- FS** Exploration of Sustainable Agriculture Based on Evaluation of Traditional Farming Practices (Leader: SATO, Tadashi)
- FS** Moving and Staying, and Urban Future Possibilities: A Multi-dimensional Spatio-temporal Observation of Urban Movement and Stagnation of People, Commodities, Capital, and Information, an Analysis of Urban Transformational Process, and a Proposal for Sustainable Regeneration (Leader: MURAMATSU, Shin)
- FS** Histories of Economic Activities and Environmental Protection Policies and their Impacts on the Ecosystem of the Caspian Sea (Leader: KITAZAWA, Daisuke)
- FS** Environmental Problems and Human Security for Children as Our Future: Asia-Pacific Children and the Environment (ACE) Project (Leader: YAMAUCHI, Taro)
- FS** A Study of Human Subsistence Ecosystems among Arab Societies: To Combat Livelihood Degradation (Leader: NAWATA, Hiroshi)

Research Promotion Center

The Research Promotion Center, in accordance with the principles of the Institute, has been engaged in developing a platform for identification of a new research perspective beyond the scope of the existing disciplinary framework. The Center intends to move ahead with its own research for promoting "global environment studies" and is responsible for communicating the research agenda to a broader audience. (Director: SAITO, Kiyooki)



Facilities

RIHN aims at elucidating the complex and varied relationships linking humanity and nature. We are seeking to synthesise new approaches that go beyond the existing formal disciplines of natural, social and human studies. Our building is designed with an open-plan layout that encourages all project team members to circulate freely and communicate with any of their colleagues at any time. Built as a broad curving gallery, it literally functions as an intellectual circle.



Administration Office

This office houses the rooms of the Director-General, the Director, the General Affairs Division including the Planning Office, the Accounting Division and the Research Cooperation Division.



Seminar Rooms

Designed for flexibility with movable partitions, these facilities can accommodate a variety of types and sizes of events from small-audience seminars to large-scale events with around 150 participants.



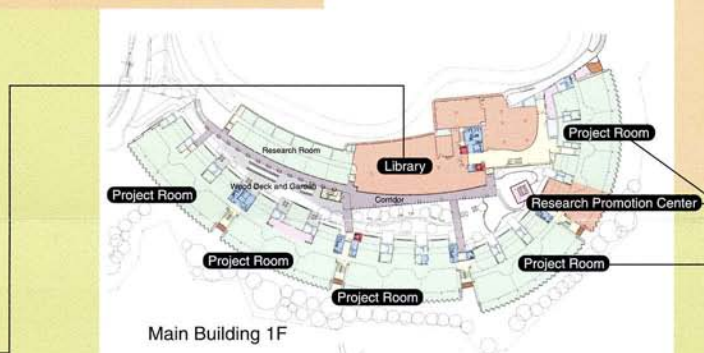
Conference Hall

This hall holds about 100 people and is equipped with a mobile stage and an audio booth for simultaneous translation.



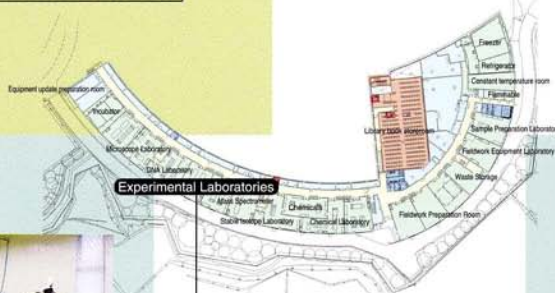
Library

The library is a repository for not only books and documents, but also research materials and publications relating to RIHN projects.



Project Rooms and Research Promotion Center

The spacious first floor of the building accommodates all 15 project areas and the Research Promotion Center. Its open-plan layout encourages free circulation by and discussion between researchers.



Experimental Laboratories

RIHN has facilities for conducting a wide range of experimental activities, including an isotope analysis laboratory, DNA analysis laboratory, laboratories for chemical experiments and analysis, a clean room and refrigeration rooms.



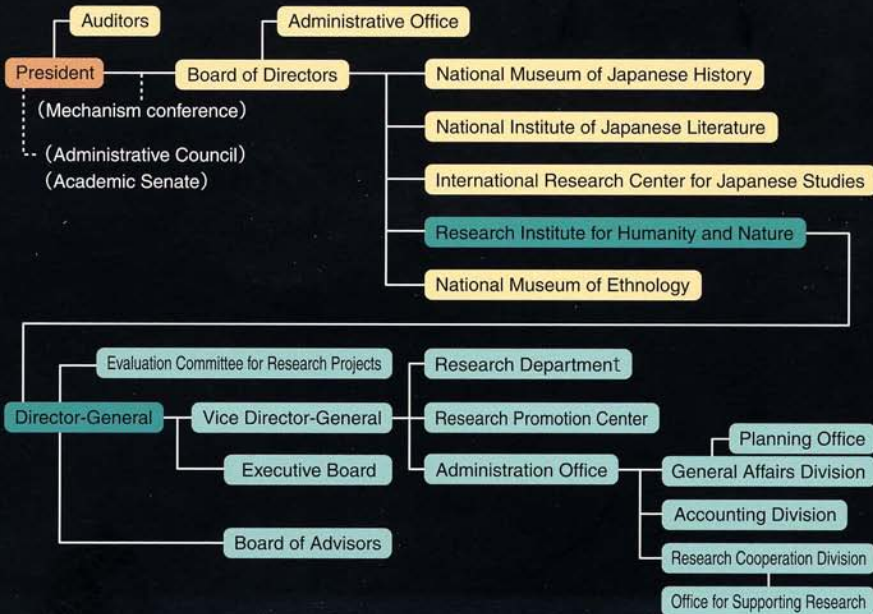
RIHN House

RIHN House is designed to host both long-term stays and brief sojourns by both Japanese and foreign visitors. The house has a communal space designed to foster interaction between guests and RIHN staff members.



Organization Chart

Inter-University Research Institute Corporation, National Institutes for the Humanities



Main Events

RIHN Forum

"Food as an Environmental Issue"
Saturday, July 7, 2007

Location: Kyoto International Conference Center, Room A

RIHN Public Seminars

We hold 8 public seminars in one year.

RIHN Second International Symposium

"Green Asia: Past, Present and Future"
October 29-31, 2007

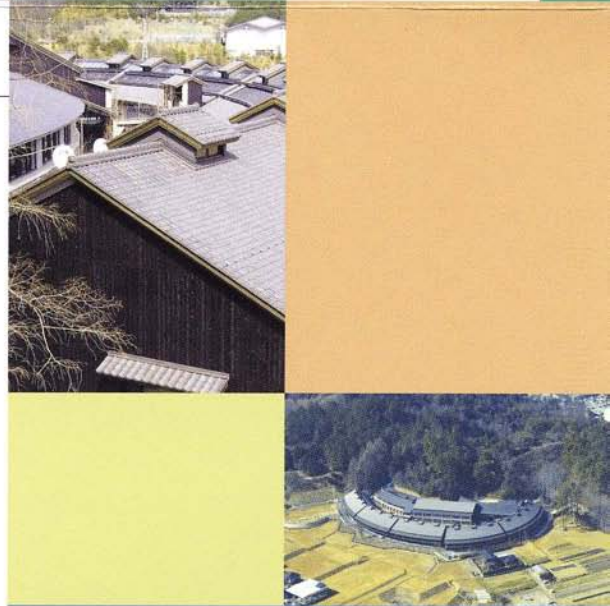
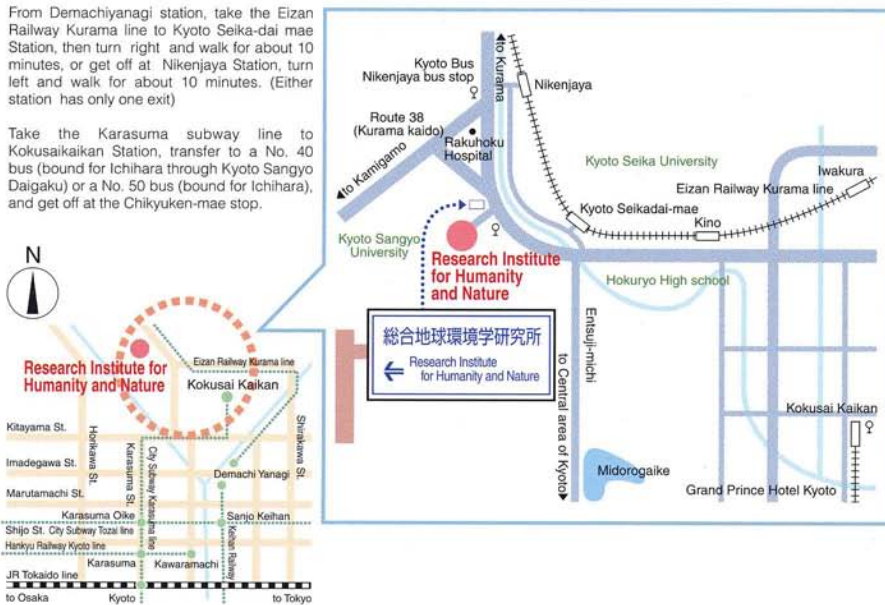
Location: Paruru Plaza Kyoto

Research Institute for Humanity and Nature

ACCESS MAP

From Demachiyang station, take the Eizan Railway Kurama line to Kyoto Seika-dai mae Station, then turn right and walk for about 10 minutes, or get off at Nikenjaya Station, turn left and walk for about 10 minutes. (Either station has only one exit)

Take the Karasuma subway line to Kokusai Kaikan Station, transfer to a No. 40 bus (bound for Ichihara through Kyoto Sangyo Daigaku) or a No. 50 bus (bound for Ichihara), and get off at the Chikyuken-mae stop.



457-4 Motoyama, Kamigamo, Kita-ku, Kyoto 603-8047

Ph: 075-707-2100

Fax: 072-707-2106

URL: <http://www.chikyuu.ac.jp>