



# GREEN KNOWLEDGE REVOLUTION!!!



HI, I'M **CHIKYUKEN**.  
HOW CAN WE CREATE  
A SUSTAINABLE FUTURE?

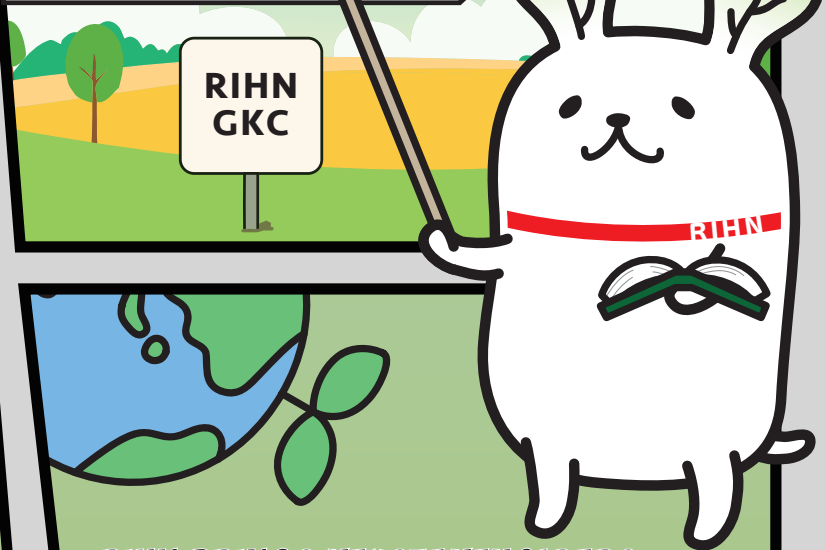


"Green human resources" seem to be key!



That's where RIHN'S Green Knowledge Center (GKC) comes in

GKC aims to develop and connect green human resources across research, government and private sectors to advance sustainability!



And builds on RIHN's previous efforts!



**RIHN BRINGS KEYSTAKEHOLDERS TO DISCUSS THE DESIGN AND DIRECTION OF INTEGRATED CAPACITY BUILDING FOR GREEN TRANSFORMATION!**

## Date: 10-11 December 2025

- ✓ **Venue:** Research Institute for Humanity and Nature, Kyoto, Japan (on-site)
- ✓ **Language:** English (with simultaneous interpretation into Japanese)
- ✓ **zoom**

Online Registration

DAY1



DAY2



Achieving sustainable societies requires new human knowledge and workplace skills, but the definition, education, up-skilling and mainstreaming of everyday 'green human resources' are still in initial stages. RIHN's new Green Knowledge Center (GKC) was established in order to create and link green human capacity across the research, government, and private sectors, with the goal of supporting local-to-global sustainability transformations. The GKC amplifies earlier efforts at RIHN in this field by the Education Division, Uehiro Research Center for Japan Environmental Studies, and Future Earth Center, including the annual TERRA School, as well as within the University Coalition for Carbon Neutrality in Japan, which includes working groups on human resource development and international relations. Such initiatives are aimed at both domestic and global green transformations, and require collaborative local, national and international engagements and development.

The 20th RIHN International Symposium will create a forum for key parties to discuss the design, direction and expansion of integrated human capacity building for the green transformation.

**Day 1** : Wednesday, 10 December 2025 ——— 10:00-18:15

*\*Pitch Talk and poster presentation \**

**Opening Remarks:** YAMAGIWA Juichi (RIHN)

**Introduction and Symposium Overview:** ASARI Misuzu (RIHN)

**Keynote speech:** Ilan CHABAY (Arizona State University, USA/RIHN)

## Session 1.

### Manga as Method in Environmental Communication

**Moderator:** Daniel NILES (RIHN)

**Speakers:**

Nick SOUSANIS (San Francisco State University, USA)

Frederic JOULIAN (School of Advanced Studies in the Social Sciences, France)

SHIMOMOTO Sayuri, TAKEMOTO Tomoji (GOMIC Exploring Club, Japan),

FURUTAKA Hikaru (Friends of High-Moon, Japan)

Oussouby SACKO (Tokyo Metropolitan Public University Corporation, Japan)

Panel Discussion

## Session 2.

### Carbon Neutrality beyond the Policy Discontinuity and the Selfishness-altruism Separation

**Moderator:** TANIGUCHI Makoto (RIHN)

**Speakers:**

Joonha PARK (Kyoto University, Japan)

Naoko ELLIS (The University of British Columbia, Canada)

Derek GLADWIN (The University of British Columbia, Canada)

TAKAMA Takeshi (su-re.co, Indonesia)

Panel Discussion

Commentator: Daniel HUNKELER (Université de Neuchâtel, Switzerland)



**Day 2** : Thursday, 11 December 2025 ——— 10:30-18:05

## Session 3.

### Beyond the Circular Economy: Area-capability Approaches towards Socio-ecological and Cultural Circulations

**Moderator:** KONDO Yasuhisa (RIHN)

**Speakers:**

ISHIKAWA Satoshi (Kyoto Prefectural University, Japan)

Naima BENKARI (Sultan Qaboos University, Oman)

Monia BOUSNINA (Sétif 1 University Ferhat Abbas, Algeria)

WAKITA Ken'ichi (NPO Biwako-Chishin, Japan)

Panel Discussion

Commentator: KANBARA Sakiko (Kobe City College of Nursing, Japan)

## Session 4.

### Toward a Resonant Future of Life: Innovation Emerges from Dialogue Beyond the Human-Nature Divide

**Moderator:** YOSHIKAWA Narumi (Uehiro Research Center for Japan Environmental Studies, RIHN)

**Speakers:**

Stephen MURPHY-SHIGEMATSU (Stanford University, USA)

INOUE Takekazu (The Japan Research Institute, Japan)

NIELSEN KITAMURA Tomoko (Cultural Translator, Denmark)

Panel Discussion

Commentator: Han GENG (University of Southampton, UK)

## Session 5.

### Hot Collections of Cherishing Green Human Resources in Our Society

**Moderator:** ASARI Misuzu (RIHN)

**Keynote speech:** MAKI Yoko (McDonald's Japan/Hitotsubashi University, Japan)

Panel Discussion:

Discussant

MAKI Yoko

Ilan CHABAY

YAMAGIWA Juichi

and others



**Research Institute for Humanity and Nature (RIHN)**

457-4 Motoyama, Kamigamo, Kita-ku, Kyoto, 603-8047, JAPAN

Tel. +81-75-707-2152 Fax. +81-75-707-2106

kokusai@chikyu.ac.jp <http://www.chikyu.ac.jp>