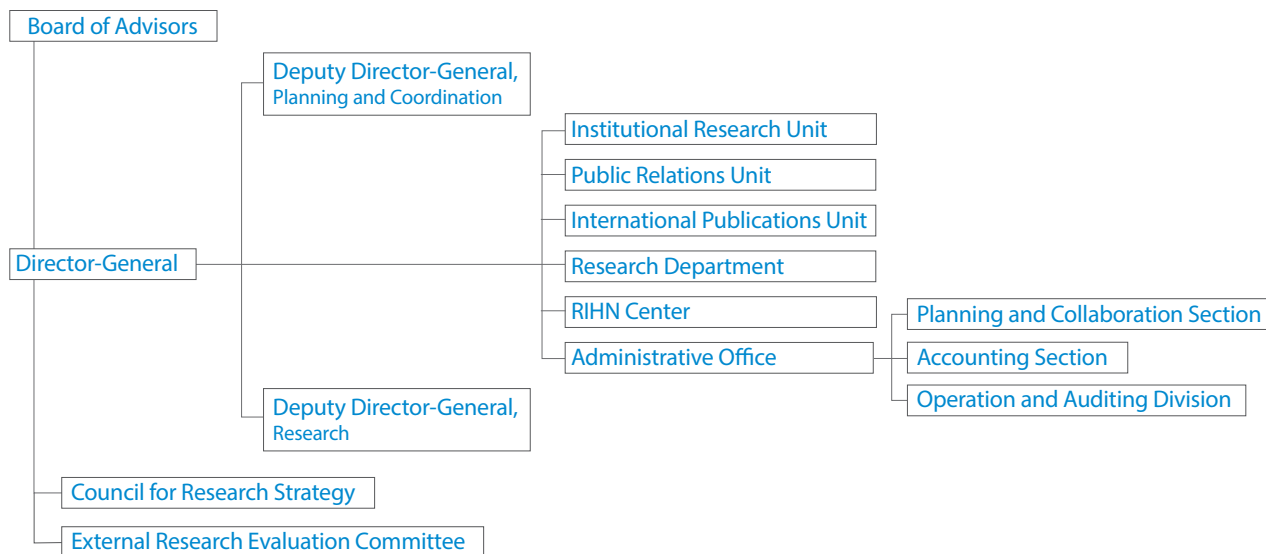


## Administrative Structure



## Financial Information

### Budget

Income		(Fiscal Year 2021)
Category	Amount (Yen in thousands)	
Subsidy for Operation	1,437,271	
Self Revenue	20,169	
<b>Total Earnings</b>	<b>1,457,440</b>	

### External Sources of Funding

External Sources of Funding		(Fiscal Year 2020)
Category	Amount (Yen in thousands)	
Fund for Promotion of Academic and Industrial Collaboration	17,608	
Grants-in-Aids for Scientific Research	65,130	
Donations for Research	9,548	



# Boards and Committees

\*As of June 1st, 2021

## Board of Advisors Oversees personnel, planning, administration and operation of the institute

ASAOKA Mie IKEYA Kazunobu KADA Yukiko	President, Kiko Network/Lawyer Professor, National Museum of Ethnology A Member of the House of Councilors Former Governor of Shiga Prefecture	TAKENAKA Chisato MALLEE, Hein TANIGUCHI Makoto SAIJO Tatsuyoshi SUGIHARA Kaoru TAYASU Ichiro OKADA Saeko	Emeritus Professor, Nagoya University Deputy Director-General, RIHN Deputy Director-General, RIHN Specially Appointed Professor, RIHN Specially Appointed Professor, RIHN Professor, RIHN Associate Professor, RIHN
KOBAYASHI Tadashi	Emeritus Professor/Specially Appointed Professor, Osaka University/ Director-General, Research Institute of Science and Technology for Society, Japan Science and Technology Agency		
KONO Yasuyuki	Vice President, Kyoto University Professor, Center for Southeast Asian Studies, Kyoto University		
NAGAO Seiya	Director, Institute of Nature and Environmental Technology, Kanazawa University		
NIIKAWA Tatsuro	Emeritus Professor, Doshisha University		

## External Research Evaluation Committee External review of research project proposals

### Domestic

HARUYAMA Shigeko  
Emeritus Professor, Mie University  
KONDO Akihiko  
Professor, Center for Environmental Remote Sensing, Chiba University  
SUMI Akimasa  
Project Professor, The University of Tokyo Institute for Future Initiatives / Emeritus Professor, the  
University of Tokyo / Former President, National Institute for Environmental Studies  
TANAKA Masaru  
Director, Mouno Institute for Forest-Sato-Sea Studies / Emeritus Professor, Kyoto University  
TODA Takao  
Chief Operating Officer, Okinawa Institute of Science and Technology Graduate University  
YUMOTO Takakazu  
Director, Primate Research Institute, Kyoto University

### Overseas

BAI, Xuemei  
Distinguished Professor, Urban Environment and Human Ecology, Fenner School of Environment and  
Society, Australian National University, Australia  
CHABAY, Ilan  
Head of Strategic Science Initiatives and Programs; Scientific Project Leader of the Knowledge,  
Learning, and Societal Change Alliance (KLASICA) and Global Sustainability Strategy Forum (GSSF)  
Projects Institute for Advanced Sustainability Studies e.V. (IASS) Potsdam, Germany / Adjunct  
Professor, School of Sustainability, Arizona State University, U.S.A.  
LU, Yonglong  
Chair Professor, Xiamen University, China  
NAGENDRA, Harini  
Director, Research Centre Professor of Sustainability, Azim Premji University, India  
ROMERO LANKAO, Patricia  
Senior Researcher, Center for Integrated Mobility Sciences, National Renewable Energy Laboratory  
(NREL), U.S.A. / Institute Research Fellow, Mansueto Institute for Urban Innovation, University of  
Chicago, U.S.A.  
SHRIVASTAVA, Paul  
Chief Sustainability Officer, The Pennsylvania State University/ Director, Sustainability Institute/  
Professor, Management and Organization, Smeal College of Business, U.S.A.  
WONG, R. Bin  
Distinguished Professor of History, Department of History, University of California, Los Angeles, U.S.A.  
ZHANG, Shiqiu  
Professor, College of Environmental Sciences and Engineering, Peking University, China

## Council for Research Strategy Oversees research strategy, personnel, project, and evaluation system

YAMAGIWA Juichi MALLEE, Hein TANIGUCHI Makoto	Director-General Deputy Director-General Deputy Director-General	SAIJO Tatsuyoshi SUGIHARA Kaoru TAYASU Ichiro	Specially Appointed Professor Specially Appointed Professor Professor	OKADA Saeko MIZUI Yoshitake	Associate Professor Administrative Director
---	--	---	---	--------------------------------	--

### Senior Advisor

TACHIMOTO Narifumi  
YASUNARI Tetsuzo

### Emeritus Professors

NAKANISHI Masami WADA Eitaro HIDAKA Toshitaka NAKAWO Masayoshi FUKUSHIMA Yoshihiro	AKIMICHI Tomoya KAWABATA Zen'ichiro OSADA Toshiaki TACHIMOTO Narifumi SATO Yo-ichiro	MOJI Kazuhiko KADA Ryohei NAKANO Takanori SATO Tetsu KUBOTA Jumpei	NAKASHIZUKA Tohru YASUNARI Tetsuzo
--	--	--	---------------------------------------

### Honorary Fellow

VAN DER LEEUW, Sander Ernst

### RIHN Staff

- Director-General
- Deputy Director-General (Planning and Coordination)
- Deputy Director-General (Research)

YAMAGIWA Juichi  
MALLEE, Hein  
TANIGUCHI Makoto

### Administrative Office

- Administrative Director MIZUI Yoshitake

### Planning and Collaboration Section

Head KOBAYASHI Hiromi

**General Affairs and Planning Subsection**

Head ZENIZUKA Rie  
Specialist FUJIKAWA Takeshi  
Chief NAKAOHJI Yu  
Clerk KIDO Takayoshi  
Clerk KOGISO Ayana  
Clerk KOHO Sayaka  
Clerk NAKANISHI Keita

**Personnel Subsection**

Head TANINAKA Kiyohisa  
Chief MIMOTO Natsuko  
Clerk NAGATA Satoko  
Clerk NAKANISHI Keita

**International Affairs Subsection**

Head FUJIKAWA Takeshi

### Collaboration Unit

Head SAKAMOTO Kohei

**Research Planning Subunit**

Head BIVONE Junko  
Clerk SAWAMURA Takahiro

**Cooperative Research Support Subunit**

Head SAKAMOTO Kohei  
Chief YOSHINO Akiko  
Clerk DOI Mizuki

**Information and Library Subunit**

Head OTA Yuko

### Accounting Section

Head SAITOU Hiroshi

**Financial Planning Subsection**

Head TSUJIMURA Hanako  
Clerk KARIYA Midori  
Clerk SUZUMURA Junko

**Facility Management Subsection**

Head ISHII Hiroya  
S.A.Specialist SUGIMOTO Takahiro  
S.A.Specialist ZUI Zoujin

**Accounting Subsection**

Head HONDA Takayuki  
Chief HISAMURA Shizuka

**Procurement Subsection**

Head HARUOKA Junichiro  
Clerk KIMURA Aoi

### Operation and Auditing Division

Head KIMURA Makoto

**Auditing Subunit**

Head TSUJIMURA Hanako  
Clerk KARIYA Midori

## Research Department

### Program Directors

MALLEE, Hein	Social Science
SAIJO Tatsuyoshi	Future Design
SUGIHARA Kaoru	Economic History, Environmental History
TANIGUCHI Makoto	Hydrology

### Professors

HAYASHIDA Sachiko	Atmospheric Environmental Science, Remote Sensing
SAKAKIBARA Masayuki	Earth and Environmental Sciences, Transdisciplinary Research
SHINJO Ryuichi	Petrology and Mineralogy, Isotope Geochemistry
YAMAUCHI Taro	Human Ecology

### Associate Professors

KANEMOTO Keichiro	Industrial Ecology, Environmental Economics
KOZAN Osamu	Hydrology
WONG, Grace	Forest and Natural Resource Economics, Development Studies
YOSHIDA Takehito	Ecology

### Assistant Professor

ONISHI Yuko	Biogeography, Macroecology
-------------	----------------------------

### Specially Appointed Professors

SAIJO Tatsuyoshi	Future Design
SUGIHARA Kaoru	Economic History, Environmental History

### Specially Appointed Assistant Professors

AIBA Masahiro	Forest Ecology
YAMANAKA Manabu	Atmosphere-Hydrosphere Sciences

### Visiting Professors

EMORI Seita	Future Projections and Risk Studies of Climate Change
FUJII Shigeo	Water Environment and Sanitation, Micropollutants Contamination
HABU Junko	Environmental Anthropology, Historical Ecology
HAYASHI Hiroaki	Plant Nutrition and Fertilizer, Sustainable Development Studies
HAYASHI Kentaro	Biogeochemistry, Soil Science
KANIE Norichika	Earth System Governance
KASUGA Fumiko	Food Safety Planning
KAWASAKI Masahiro	Atmospheric Chemistry
KUSAGO Takayoshi	Action-based Development Studies
MIZUNO Kosuke	Indonesian Area Research
NAKAGAWA Yoshinori	Future Studies, Qualitative Research
NAKATSUKA Takeshi	Biogeochemistry, Paleoclimatology
OKABE Kimiko	Insect Ecology, Biodiversity
OKUDA Noboru	Ecological Science
SAITO Kazuyuki	Climate System, Geocryology
SHIBATA Akira	Rural Development, Biomass Carbonization
TERADA Masahiro	Environmental Humanities, History/ Meta-history

### Visiting Associate Professors

KAWANO Motoko	Comparative Political Economy, Comparative Area Research of Natural Resource Industries
KIHARA Hirotaka	Energy Policy, Social Psychology
MASUHARA Naoki	Public Administration Studies and Energy Policy
MCGREEVY, Steven R.	Environmental Sociology
OTA Kazuhiko	Japanese Environmental Ethics
SHIMIZU Takao	Archaeology, Ethnology
WATANABE Kazuo	Area Studies
WATANABE Tsuyoshi	Environmental Earth Science, Coral Reef Environmental Earth Sciences

### Senior Researchers

KAJITA Ryosuke	Area Studies
LEE, Jemyung	Regional Informatics, Rural Planning
NGUYEN, Tien Hoang	Geoinformatics, Environmental Modeling and Mapping
OSAWA Takamasa	Social Anthropology

### Researchers

FAHMI, Muhamad	Bioinformatics, Molecular Evolution
FARABI-ASL, Hadi	Energy System Analysis
HAYASHI Koji	Ecological Anthropology
HUANG, Wan Hui	Regional Environmental Studies, GIS
KATAFUCHI Yuya	Econometrics, Applied Econometrics
KIMIJIMA Satomi	Area Studies
KOBAYASHI Kunihiro	International Environmental Law
KOO, Bonjun	Urban Management, Disaster Risk Management
KUANG Xiaoxu	Chemistry and Chemical Engineering
MURAO Rumiko	Area Studies, Anthropology
SHAHRIER, Shibly	Future Design
SHIRAI Yuko	Human Ecology, Livelihood Systems Study
WIN THIRI KYAW	Neurology and Clinical Pharmacology

### Research Associates

ARAKI Hikaru	NAKAI Minami
HONMA Saki	SENDA Masako
IWASAKI Yumiko	SHIMAUCHI Risa
KARATSU Fukiko	TAKATA Naoko
KATSURA Tomomi	TAKEHARA Mari
KIMURA Ayako	YAMAKAWA Ayano
KUIPERS, Rob	YAMAMOTO Aya
MIURA Tomoko	YASUTOMI Natsuko
MYO HAN HTUN	

## RIHN Center

### Director

MALLEE, Hein

### Deputy Director

TAYASU Ichiro

### Heads of Divisions

Laboratory and Analysis Division	TAYASU Ichiro
Information Resources Division	KUMAZAWA Terukazu
Collaboration Division	ISHII Reichiro
Communication Division	ABE Ken-ichi
Future Earth Division	MALLEE, Hein

### Professors

ABE Ken-ichi	Ecological Anthropology
MALLEE, Hein	Social Science
TANIGUCHI Makoto	Hydrology
TAYASU Ichiro	Isotope Ecology, Isotope Environmental Science

### Associate Professors

ISHII Reichiro	Theoretical Ecology
KONDO Yasuhisa	Archaeology, GIS, Open Science
KUMAZAWA Terukazu	Environmental Planning, Regional Informatics
MATSUMOTO Tae	Educational Technology
NILES, Daniel	Geography
SHIN Ki-Cheol	Petrology, Geochemistry, Isotope Geology

### Assistant Professor

ONISHI Yuko	Biogeography, Macroecology
-------------	----------------------------

### Specially Appointed Associate Professor

LAMBINO, Ria	Environmental Governance
--------------	--------------------------

### Research Fellow, NIHU Center for Transdisciplinary Innovation (Ecohealth)/ Specially Appointed Assistant Professor

JIANG Hong-Wei	Human Ecology
----------------	---------------

### Research Fellow, NIHU Center for Information and Public Relations/ Specially Appointed Assistant Professor

KIM, Satbyul	Cultural Anthropology
--------------	-----------------------

### Senior Researcher

TAMURA Norie	Natural Resource Management
--------------	-----------------------------

### Researchers

MIMURA Yutaka	Architectural History, Urban History, Historical GIS
SHIMADA Nahoko	Study of Ecological Thought
SODA Katsuya	Forced Migration Studies
TAKANO Shinya	Isotope Hydrology
YABUSAKI Shiho	Isotope Hydrology
YOSHIMIZU Chikage	Biogeochemistry

### Research Associates

FUCHIGAMI Yuriko	OKA Masami	OTOGAWA Mari	YUZEN Natsuko
KURATA Junko	OKAMOTO Takako	UEDA Sachiko	
NISHIWAKI Aki	OTANI Michitaka	YASUDA Akiko	

## Institutional Research Unit

### Head

TANIGUCHI Makoto

### Deputy Head

ISHII Reichiro

### Members of Unit

KUMAZAWA Terukazu  
OKADA Saeko  
KOBAYASHI Hiromi

### Specially Appointed Assistant Professor

WAKAMATSU Hisanori

### Specially Appointed Specialist

YAMASHITA Hitomi

## Public Relations Unit

### Head

MALLEE, Hein

### Members of Unit

ABE Ken-ichi  
KIM, Satbyul  
KUMAZAWA Terukazu  
KOBAYASHI Hiromi

### Associate Professor

OKADA Saeko

### Chief

NAKAHOJI Yu

### Specially Appointed Specialist

TERAMOTO Shun

### Research Associate

KIMURA Aoi

## International Publications Unit

### Head

SUGIHARA Kaoru

### Members of Unit

MALLEE, Hein  
ABE Ken-ichi  
NILES, Daniel  
WONG, Grace

### Research Associate

SUGIMOTO Hayato

## A Brief History of RIHN

- 1993 — Prime minister's advisory panel on the Global Environment in 21st Century launched
- 1995 — "On the Promotion of Global Environmental Studies" published by The Science Council of Japan
- 1997 — Report "On the core research institute for Global Environmental Studies" published by MEXT (Ministry of Education, Culture, Sports, Science and Technology)
- 2001 — RIHN Established on the Kyoto University campus  
— HIDAKA Toshitaka, Director-General
- 2002 — RIHN relocated to the former Kasuga Primary School  
— The 1st RIHN Forum
- 2004 — RIHN becomes a member of the National Institutes for the Humanities  
— The 1st RIHN Public Seminar
- 2005 — The 1st RIHN Area Seminar
- 2006 — RIHN relocates to current facilities in northern Kyoto  
— The 1st RIHN International Symposium
- 2007 — TACHIMOTO Narifumi appointed as the second Director-General  
— The Center for Coordination, Promotion and Communication established  
— First research projects concluded
- 2008 — The 1st Collaborative Symposium with the International Research Center for Japanese Studies
- 2009 — The Earth Forum Kyoto and Earth Hall of Fame Kyoto Award established
- 2010 — Core Research Hub established  
— The RIHN Encyclopedia of Global Environmental Studies published
- 2011 — RIHN 10 year anniversary and publication  
— GEC-Japan network established
- 2013 — YASUNARI Tetsuzo appointed as the third Director-General  
— The Center for Coordination, Promotion and Communication reorganized into the Center for Research Development and the Center for Research Promotion
- 2014 — Selected as Regional Center for Future Earth in Asia
- 2016 — 3 Research Programs and Core Program established and RIHN Center reorganized
- 2021 — YAMAGIWA Juichi appointed as the fourth Director-General  
— RIHN 20 year anniversary and symposium



## Inter-University Research Institute Corporation National Institutes for the Humanities (NIHU)

<https://www.nihu.jp/en>

NIHU carries out research on the human sciences and aims to create new value systems that will genuinely enrich our lives. NIHU is one of the four inter-university research institute corporations in Japan. It consists of six inter-university research institutes that specialize in humanities research. Each of the institutes is deeply involved in foundational research in their field as both domestic and international research centers. The six institutes interact in a complementary fashion and carry out research that transcends the frameworks of traditional disciplines. They also cooperate with other research organizations domestically and internationally in their attempt to identify and solve modern day issues.

### Research and Communications

In 2016, two new centers, the Center for Transdisciplinary Innovation (CTI) and the Center for Information and Public Relations (CIP) were established to improve governance at NIHU.

The two Centers promote international collaborative research by building a research network around the six institutes. At the same time, the Centers communicate their research globally and are committed to developing next generation scholars.

### Center for Transdisciplinary Innovation (CTI)

CTI strengthens mutual cooperation between the six institutes and leads NIHU's Transdisciplinary Projects that collaborate with universities and research institutions in Japan and overseas.

#### **NIHU Transdisciplinary Projects**

##### **Institute-based Projects**

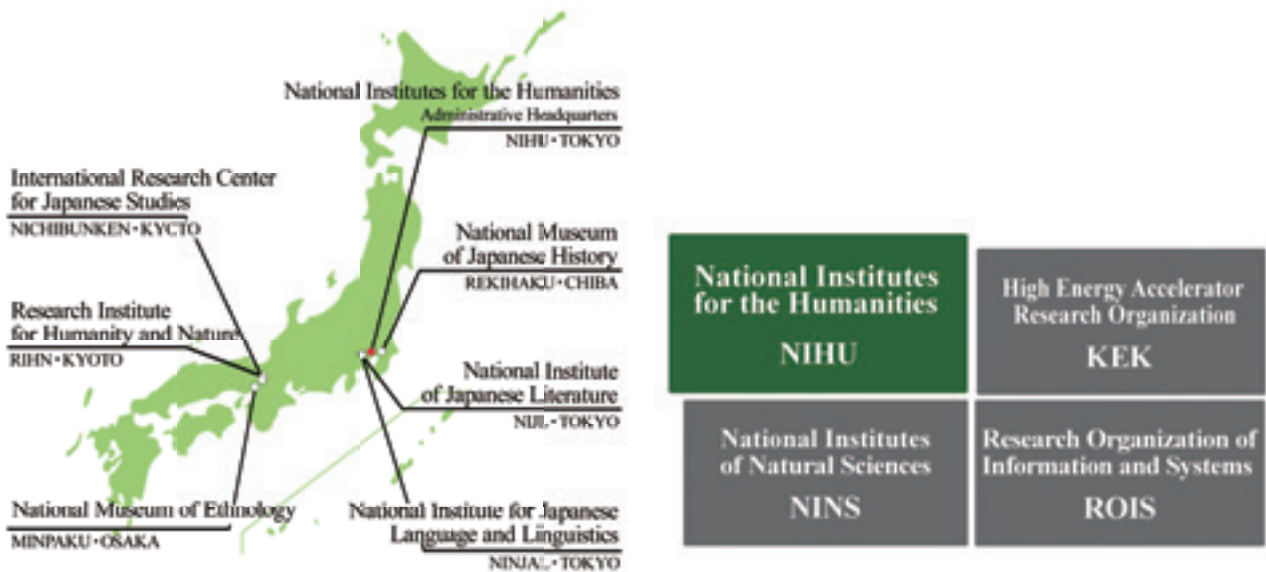
- REKIHAKU: Constructing Integrated Studies of Cultural and Research Resources, and Renovating Sharing Infrastructures of Research Resources in Japanese History and Cultures
- NIJL: Project to Build an International Collaborative Research Network for Pre-modern Japanese Texts
- NINJAL: A New Integration of Japanese Language Studies based on Diverse Language Resources
- NICHIBUNKEN: Historical and International Research into Popular Culture to Pursue New Images of Japan
- RIHN: Transformation towards Sustainable Futures in Complex Human-Nature Systems in Asia
- MINPAKU: Info-Forum Museum for Cultural Resources of the World

##### **Multidisciplinary Collaborative Projects**

- Change of Local Communities and Reconstruction of Community Cultures after Disasters in Japanese Archipelago
- Rethinking Eco-health in Asia
- Development of a Field of Comprehensive Bibliographical Studies from an Interdisciplinary Perspective

##### **Network-based Projects**

- NIHU Area Studies
  - Northeast Asia Modern Middle East South Asia
- Japan-related Documents and Artifacts Held Overseas: NIHU International Collaborative Research and Utilization
  - Insights into Japan-related Overseas Artifacts and Documents from 19th-century Europe, Research and Use: Developing the Foundation for International Collaboration in Transmitting Japanese Culture
  - Research, Conservation and Utilization of the Marega Collection Preserved in the Vatican Library
  - A Survey, Study and Use of the Japan-related Documents and Artifacts in North America: Socio-historical Approach to 'Modern Overseas Material Informatics'
  - Coordination between Projects to Make Effective Use of Research Results



Four inter-university research institute corporations, and six inter-university research institutes specializing in humanities.

### Center for Information and Public Relations (CIP)

CIP consolidates data related to human cultures by gathering information and research results from researchers affiliated with NIHU, and important documents and materials from the archives of the six institutes. The materials are made available to the public.

#### Advanced Collaboration Systems

nihuINT <https://int.nihu.jp/?lang=en&>

Comprehensive search engine for databases operated by the six NIHU institutes as well as other organizations.

#### Research Resource Databases and Publications

NIHU Repository

Cloud-based NIHU repository giving users comprehensive access to research papers from the six NIHU institutes.

Researcher's Profile <https://nrd.nihu.jp/search?m=home&l=en>

Comprehensive database containing information on researchers throughout NIHU.

Portal site for Japanese Studies [https://guides.nihu.jp/japan\\_links](https://guides.nihu.jp/japan_links)

English Resource Guide for Japanese Studies and Humanities in Japan.

NIHU Magazine [https://www.nihu.jp/ja/publication/nihu\\_magazine](https://www.nihu.jp/ja/publication/nihu_magazine)

A bilingual (Japanese and English-language) publication that covers topics such as the latest research trends, results and activities at NIHU.

#### NIHU Symposiums

NIHU organizes symposiums for the general public in order to share the comprehensive human culture related research resources and results it has accumulated.

#### Industry-Academia Collaborations

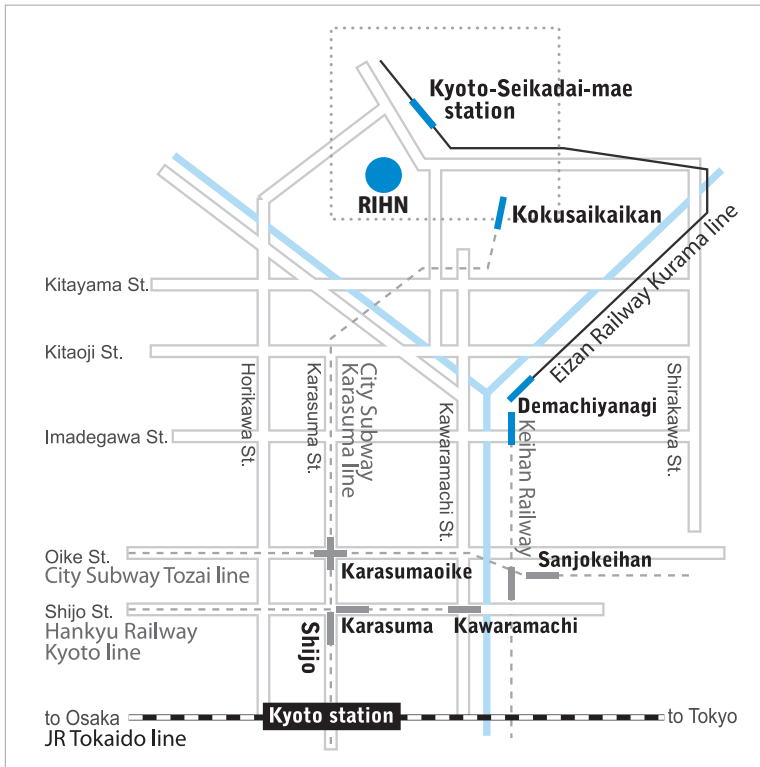
NIHU collaborates with industry and other partners to give back its fruits of research to society.

Joint symposium with Ajinomoto Foundation for Dietary Culture –“Food sustainability: Exploring the nature of diet geared to the future” (recorded)

Joint lecture with Otemachi Academia

Joint symposium with the Japan Forum for the Cultivation of Insight from the Humanities

## Access



### By City Subway

From Kyoto Station, take the Karasuma Line to Kokusaikaikan Station (the last station), and transfer to Kyoto Bus.

### By Kyoto Bus

From Kokusaikaikan Station, take bus No. 40, 50 or 52 to Chikyuken-mae.

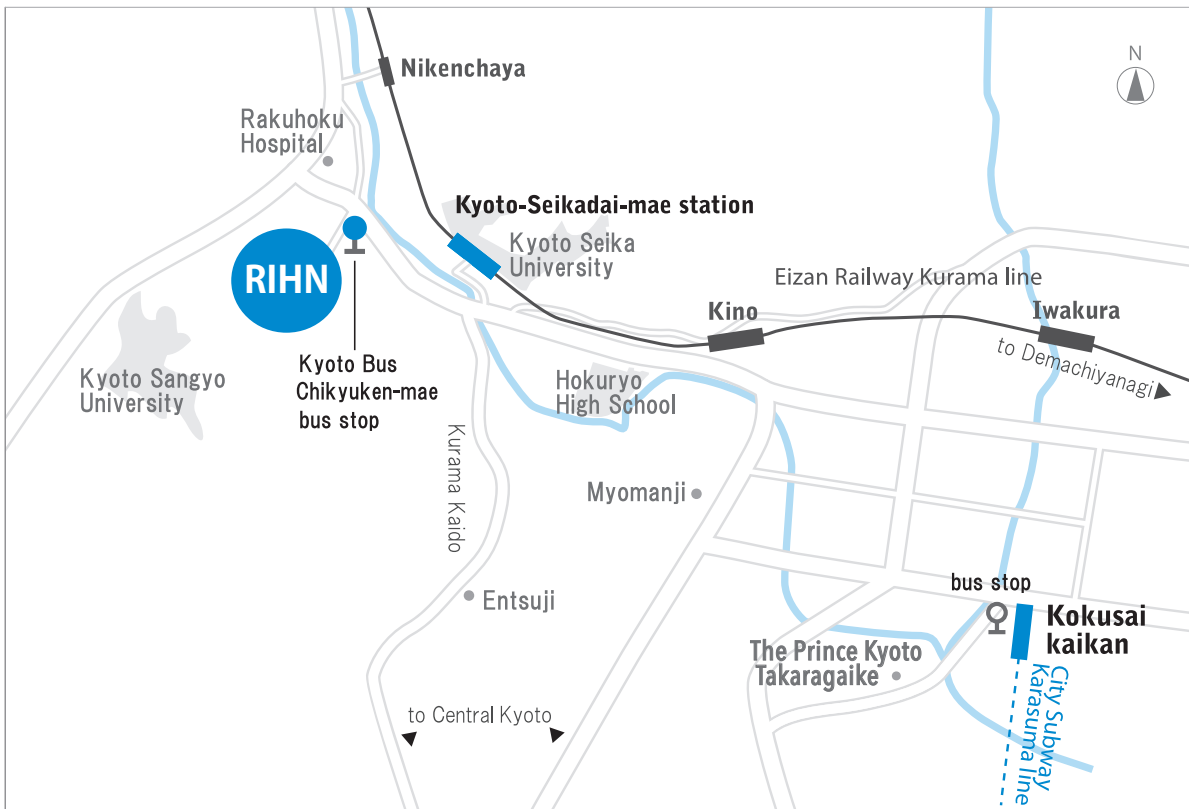
RIHN is at the base of the hill on your left.

### By Eizan Railway

From Demachiyanagi Station in Kyoto City, take the Kurama Line.

Get off at Kyoto-Seikadai-mae Station.

RIHN is a 10-minute walk from the station.



## RIHN Prospectus 2021-2022

Managing Editor: Daniel NILES

Designed by OKAZAWA Rina

### Front Cover photo:

Disappearing Limboto Lake, Indonesia

Photo by KIMIJIMA Satomi

### Back Cover photo:

Missing Emissions - Brick Kilns, Lucknow, India

Photo by Prakhar MISRA

Flying over RIHN in the autumn sky

Photo by WATANABE Kazuo



Inter-University Research Institute Corporation  
National Institutes for the Humanities  
**Research Institute for  
Humanity and Nature**

457-4 Motoyama, Kamigamo, Kita-ku, Kyoto  
603-8047, JAPAN

TEL. +81-75-707-2100  
FAX. +81-75-707-2106

kokusai@chikyu.ac.jp  
www.chikyu.ac.jp

ISSN 2185-8055  
June 2021

© RESEARCH INSTITUTE FOR HUMANITY AND NATURE

