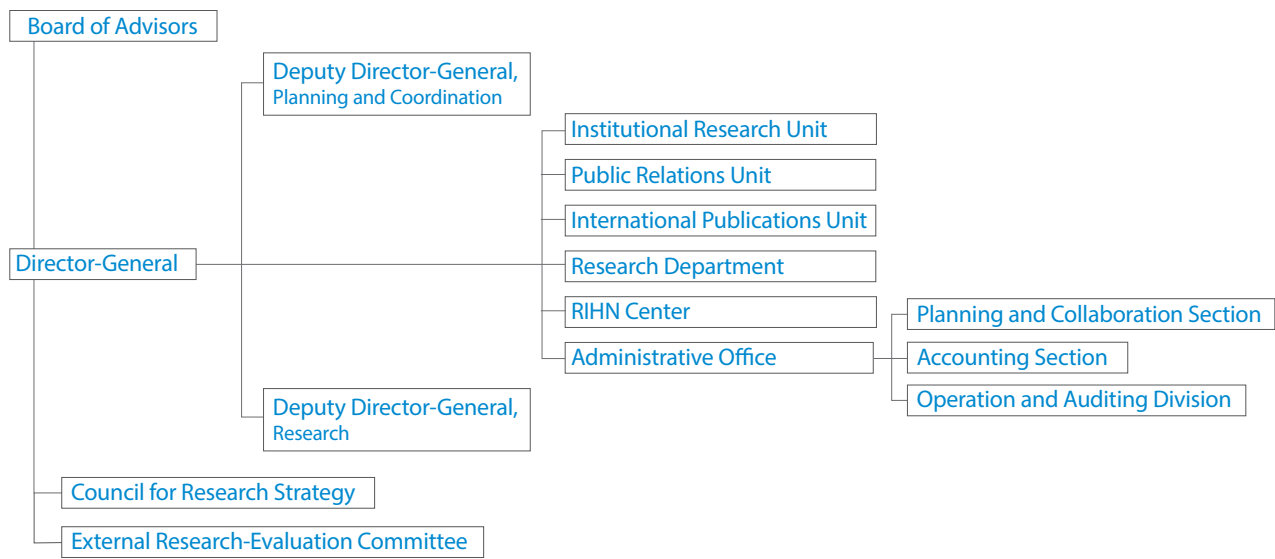


Administrative Structure



Financial Information

Budget

Income (Fiscal Year 2020)	
Category	Amount (Yen in thousands)
Subsidy for Operation	1,436,463
Self Revenue	19,379
Total Earnings	1,455,842

External Sources of Funding

(Fiscal Year 2019)	
Category	Amount (Yen in thousands)
Fund for Promotion of Academic and Industrial Collaboration	73,256
Grants-in-Aids for Scientific Research	68,520
Donations for Research	10,210



Boards and Committees

*As of July 1st, 2020

Board of Advisors Oversees personnel, planning, administration and operation of the institute

ASAOKA Mie IKEYA Kazunobu KADA Yukiko	President, Kiko Network Professor, National Museum of Ethnology A Member of the House of Councilors Former Governor of Shiga Prefecture	MALLEE, Hein TANIGUCHI Makoto SAIJO Tatsuyoshi SUGIHARA Kaoru HAYASHIDA Sachiko TAYASU Ichiro OKADA Saeko	Deputy Director-General, RIHN Deputy Director-General, RIHN Specially Appointed Professor, RIHN Specially Appointed Professor, RIHN Professor, RIHN Professor, RIHN Associate Professor, RIHN
KOBAYASHI Tadashi KONO Yasuyuki	Professor Emeritus, Osaka University Vice President, Kyoto University Professor, Center for Southeast Asian Studies, Kyoto University		
NAGAO Seiya	Director, Institute of Nature and Environmental Technology, Kanazawa University		
NIIKAWA Tatsuhiro TAKENAKA Chisato	Professor, Graduate School, Doshisha University Professor, Graduate School of Bioagricultural Sciences, Nagoya University		

External Research-Evaluation Committee External review of research project proposals

<i>Domestic</i> KAWABATA Zen'ichiro Emeritus Professor, RIHN KONDO Akihiko Professor, Center for Environmental Remote Sensing / Department of Environmental Remote Sensing, Division of Earth and Environmental Sciences, Graduate School of Science and Engineering, Chiba University SUMI Akimasa Project Professor, The University of Tokyo Institute for Future Initiatives / Professor Emeritus, the University of Tokyo / Former President, National Institute for Environmental Studies TANAKA Masaru Director, Moune Institute for Forest-Sato-Sea Studies / Professor Emeritus, Kyoto University TODA Takao Vice President for Human Security and Global Health, Japan International Cooperation Agency UCHIBORI Motomitsu Emeritus Professor, The Open University of Japan / Emeritus Professor, Hitotsubashi University YUMOTO Takakazu Director, Primate Research Institute, Kyoto University	<i>Overseas</i> BAL, Xuemei Professor, Urban Environment and Human Ecology, Fenner School of Environment and Society, Australian National University, Australia CHABAY, Ilan Head of Strategic Science Initiatives and Programs; Scientific Project Leader of the Knowledge, Learning, and Societal Change Alliance (KLASICA) and Global Sustainability Strategy Forum (GSSF) Projects Institute for Advanced Sustainability Studies e.V. (IASS) Potsdam, Germany / Adjunct Professor, School of Sustainability, Arizona State University, U.S.A. LU, Yonglong Research Professor and Co-Director, Research Center for Eco-Environmental Sciences, Chinese Academy of Sciences, China NAGENDRA, Harini Professor of Sustainability / Member of Curriculum and Pedagogy Committee / Member of Research Council, Azim Premji University, India ROMERO LANKAO, Patricia Senior Research Scientist, Transportation and Hydrogen Systems Center, National Renewable Energy Laboratory (NREL), U.S.A. / Institute Research Fellow, Mansueto Institute for Urban Innovation, University of Chicago, U.S.A. SHRIVASTAVA, Paul Chief Sustainability Officer / Director, Sustainability Institute / Professor, Management and Organization, Smeal College of Business, The Pennsylvania State University, U.S.A. WONG, R. Bin Distinguished Professor of History, Department of History, University of California, Los Angeles, U.S.A. ZHANG, Shiqiu Professor, College of Environmental Sciences and Engineering, Peking University, China
--	--

Council for Research Strategy Oversees research strategy, personnel, project, and evaluation system

YASUNARI Tetsuzo MALLEE, Hein TANIGUCHI Makoto	Director-General Deputy Director-General Deputy Director-General	SAIJO Tatsuyoshi SUGIHARA Kaoru HAYASHIDA Sachiko	Specially Appointed Professor Specially Appointed Professor Professor	TAYSU Ichiro OKADA Saeko MIZUI Yoshitake	Professor Associate Professor Administrative Director
--	--	---	---	--	---

Senior Advisor

TACHIMOTO Narifumi

Emeritus Professors

NAKANISHI Masami WADA Eitaro HIDAKA Toshitaka NAKAWO Masayoshi	FUKUSHIMA Yoshihiro AKIMICHI Tomoya KAWABATA Zen'ichiro OSADA Toshiaki	TACHIMOTO Narifumi SATO Yo-Ichiro MOJI Kazuhiko KADA Ryohei	NAKANO Takanori SATO Tetsu KUBOTA Jumpei NAKASHIZUKA Tohru
---	---	--	---

RIHN Staff

- Director-General
- Deputy Director-General (Planning and Coordination)
- Deputy Director-General (Research)

YASUNARI Tetsuzo
MALLEE, Hein
TANIGUCHI Makoto

Administrative Office

- Administrative Director
- MIZUI Yoshitake

■ Planning and Collaboration Section

Head	HIGASHI Hideaki
General Affairs and Planning Subsection	
Head	ZENIZUKA Rie
Chief	NAKAHOJI Yu
Clerk	KOGISO Ayana
Clerk	KOHO Sayaka
Personnel Subsection	
Head	TANINAKA Kiyohisa
Chief	MIMOTO Natsuko
Clerk	NAGATA Satoko
Clerk	NAKANISHI Keita
International Affairs Subsection	
Head	FUJIKAWA Takeshi

Collaboration Unit

Head	SAKAMOTO Kohei
Research Planning Subunit	
Head	BIVONE Junko
Clerk	SAWAMURA Takahiro
Cooperative Research Support Subunit	
Head	SAKAMOTO Kohei
Chief	YOSHINO Akiko
Information and Library Subunit	
Chief	YAMASHITA Takayoshi

■ Accounting Section

Head	SAITOU Hiroshi
Deputy Head	SHIGEMITSU Kazuo
Specialist	SUNADA Akinobu
Financial Planning Subsection	
Head	TSUJIMURA Hanako
Facility Management Subsection	
Head	ISHII Hiroya
S.A.Specialist	ZUI Zoujin
Accounting Subsection	
Head	HONDA Takayuki
Procurement Subsection	
Head	HARUOKA Junichiro
Clerk	KARIYA Midori

■ Operation and Auditing Division

Head	KIMURA Makoto
Specialist	SUNADA Akinobu
Auditing Subunit	
Head	TSUJIMURA Hanako

Research Department

Program Directors

MALLEE, Hein	Social Science
SAIJO Tatsuyoshi	Future Design
SUGIHARA Kaoru	Economic History, Environmental History
TANIGUCHI Makoto	Hydrology

Professors

HAYASHIDA Sachiko	Atmospheric Environmental Science, Remote Sensing
SAKAKIBARA Masayuki	Earth and Environmental Sciences, Transdisciplinary Research
YAMAUCHI Taro	Human Ecology

Associate Professors

KANEMOTO Keichiro	Industrial Ecology, Environmental Economics
KONDO Yasuhisa	Archaeology, GIS, Open Science
KOZAN Osamu	Hydrology
MCGREEVY, Steven R.	Environmental Sociology
YOSHIDA Takehito	Ecology

Assistant Professors

ONISHI Yuko	Biogeography, Macroecology
OTA Kazuhiko	Japanese Environmental Ethics
LEE, Sanghyun	Agricultural Water Management

Specially Appointed Professors

SAIJO Tatsuyoshi	Future Design
SUGIHARA Kaoru	Economic History, Environmental History

Specially Appointed Assistant Professors

AIBA Masahiro	Forest Ecology
NAKAO Seiji	Historical Anthropology

Visiting Professors

FUJII Shigeo	Water Environment and Sanitation, Micropollutants Contamination
--------------	--

HABU Junko	Environmental Anthropology, Historical Ecology
HAYASHI Hiroaki	Plant Nutrition and Fertilizer, Sustainable Development Studies
KANIE Norichika	Earth System Governance
KASUGA Fumiko	Food Safety Planning
KAWASAKI Masahiro	Atmospheric Chemistry
KUSAGO Takayoshi	Action-based Development Studies
MANAGI Shunsuke	Environmental Economics
MIZUNO Kosuke	Urban Engineering
NAKATSUKA Takeshi	Indonesian Area Research
SHIBATA Akira	Biogeochemistry, Paleoclimatology
SHINJO Ryuichi	Rural Development, Biomass Carbonization
YONEMOTO Shohei	Petrology and Mineralogy, Isotope Geochemistry
	History and Philosophy of Science

Visiting Associate Professors

ENDO Aiko	Marine and Coastal Policy, Fishery Economics
NAKAGAWA Yoshinori	Qualitative Research, Future Design
NISHI Makoto	Medical Anthropology
OKUDA Noboru	Ecological Science
SHIMIZU Takao	Archaeology, Ethnology
TERADA Masahiro	Environmental Humanities, History/Meta-history
WATANABE Kazuo	Area Studies
WONG, Grace	Forest and Natural Resource Economics, Development Studies

Senior Researchers

FRY, Jacob Redman	Computational Sustainability, Environmental Economics
MASUHARA Naoki	Public Administration Studies and Energy Policy
NGUYEN, Tien Hoang	Geoinformatics, Environmental Modeling and Mapping
RUPPRECHT Christoph D. D.	Geography

TAHERZADEH, Oliver Ahrash	Environmental Economics, Global Food System
TAMURA Norie	Natural Resource Management
YAMANAKA Manabu	Atmosphere-Hydrosphere Sciences

Researchers

FARABI-ASL, Hadi	Energy System Analysis
HAYASHI Koji	Ecological Anthropology
HUANG, Wan Hui	Regional Environmental Studies, GIS
KAJITA Ryosuke	Area Studies
KATAFUCHI Yuya	Econometrics, Applied Econometrics
KIMIJIMA Satomi	Area Studies
KOBAYASHI Kunihiro	International Environmental Law
KOBAYASHI Mai	Environmental Sociology
KUANG Xiaoxu	Chemistry and Chemical Engineering
LEE, Jemyung	Regional Informatics, Rural Planning
MISRA, Prakhhar	Environmental Remote Sensing, Land Cover Change Modelling
NAKAHARA Satoe	Cultural Anthropology, Peace Studies
ODA Kimisato	Landscape Architecture, Cultural Landscape
OSAWA Takamasa	Social Anthropology
SHAHRIER, Shibly	Future Design
SHINKAI Rika	Cultural Anthropology
SHIODERA Satomi	Forest Ecology
SHIRAI Yuko	Human Ecology, Livelihood Systems Study
SPIEGELBERG, Maximilian	Environmental Management
WIN THIRI KYAW	Neurology and Clinical Pharmacology
YAMADA Taiki	Graph Theory, Optimal Transport Theory

Research Associates

ARAKI Hikaru	KIMURA Ayako	SHIMAUCHI Risa
HONMA Saki	KOBAYASHI Yuko	SUETSUGU Satoko
ITO Takafumi	MATSUOKA Yuko	TAKATA Naoko
IWASAKI Yumiko	MYO HAN HTUN	TAKEHARA Mari
KARATSU Fukiko	NAKAI Minami	YAMAMOTO Aya
KATSURA Tomomi	SENDA Masako	

RIHN Center

Director	MALLEE, Hein
Deputy Director	TAYASU Ichiro

Heads of Divisions

Laboratory and Analysis Division	TAYASU Ichiro
Information Resources Division	KUMAZAWA Terukazu
Collaboration Division	ISHII Reichihiro
Communication Division	ABE Ken-ichi
Future Earth Division	MALLEE, Hein

Professors

ABE Ken-ichi	Ecological Anthropology
MALLEE, Hein	Social Science
TANIGUCHI Makoto	Hydrology
TAYASU Ichiro	Isotope Ecology, Isotope Environmental Science

Associate Professors

ISHII Reichihiro	Theoretical Ecology
KONDO Yasuhisa	Archaeology, GIS, Open Science
KUMAZAWA Terukazu	Environmental Planning, Regional Informatics
MATSUMOTO Tae	Educational Technology
NILES, Daniel	Geography
SHIN Ki-Cheol	Petrology, Geochemistry, Isotope Geology

Assistant Professor

ONISHI Yuko	Biogeography, Macroecology
-------------	----------------------------

Specially Appointed Associate Professor

LAMBINO, Ria	Environmental Governance
--------------	--------------------------

Research Fellow, NIHU Center for Transdisciplinary Innovation (Ecohealth)/ Specially Appointed Assistant Professor

JIANG Hong-Wei	Human Ecology
----------------	---------------

Research Fellow, NIHU Center for Information and Public Relations/ Specially Appointed Assistant Professor

KIM, Satbyul	Cultural Anthropology
--------------	-----------------------

Researchers

FUJIYOSHI Lei	Isotope Environmental Science
MIMURA Yutaka	Architectural History, Urban History, Historical GIS
SHIMADA Nahoko	Study of Ecological Thought
SODA Katsuya	Forced Migration Studies
YABUSAKI Shiho	Isotope Hydrology
YOSHIMIZU Chikage	Biogeochemistry

Research Associates

KURATA Junko	OTANI Michitaka
NISHIWAKI Aki	UEDA Sachiko
OKA Masami	YASUDA Akiko
OKAMOTO Takako	YUZEN Natsuko

Institutional Research Unit

Head	TANIGUCHI Makoto
-------------	------------------

Members of Unit

TAYASU Ichiro	KUMAZAWA Terukazu
YAMAUCHI Taro	OKADA Saeko
KANEMOTO Keichiro	NAKAO Seiji
KONDO Yasuhisa	

Specially Appointed Assistant Professor

WAKAMATSU Hisanori

Public Relations Unit

Head	MALLEE, Hein
-------------	--------------

Deputy Head	HIGASHI Hideaki
--------------------	-----------------

Members of Unit

ABE Ken-ichi	MCGREEVY, Steven R.
YOSHIDA Takehito	KIM, Satbyul
KUMAZAWA Terukazu	

Associate Professor	OKADA Saeko
----------------------------	-------------

Chief	NAKAHOJI Yu
--------------	-------------

Specially Appointed Specialist	TERAMOTO Shun
---------------------------------------	---------------

Research Associate	KIMURA Aoi
---------------------------	------------

International Publications Unit

Head	SUGIHARA Kaoru
-------------	----------------

Members of Unit

YASUNARI Tetsuzo
MALLEE, Hein
ABE Ken-ichi
NILES, Daniel

Research Associate	SUGIMOTO Hayato
---------------------------	-----------------

A Brief History of RIHN

- 1993 — Prime minister's advisory panel on the Global Environment in 21st Century launched
- 1995 — "On the Promotion of Global Environmental Studies" published by The Science Council of Japan
- 1997 — Report "On the core research institute for Global Environmental Studies" published by MEXT (Ministry of Education, Culture, Sports, Science and Technology)
- 2001 — RIHN Established on the Kyoto University campus
— HIDAKA Toshitaka, Director-General
- 2002 — RIHN relocated to the former Kasuga Primary School
— The 1st RIHN Forum
- 2004 — RIHN becomes a member of the National Institutes for the Humanities
— The 1st RIHN Public Seminar
- 2005 — The 1st RIHN Area Seminar
- 2006 — RIHN relocates to current facilities in northern Kyoto
— The 1st RIHN International Symposium
- 2007 — TACHIMOTO Narifumi appointed as the second Director-General
— The Center for Coordination, Promotion and Communication established
— First research projects concluded
- 2008 — The 1st Collaborative Symposium with the International Research Center for Japanese Studies
- 2009 — The Earth Forum Kyoto and Earth Hall of Fame Kyoto Award established
- 2010 — Core Research Hub established
— The RIHN Encyclopedia of Global Environmental Studies published
- 2011 — RIHN 10 year anniversary and publication
— GEC-Japan network established
- 2013 — YASUNARI Tetsuzo appointed as the third Director-General
— The Center for Coordination, Promotion and Communication reorganized into the Center for Research Development and the Center for Research Promotion
- 2014 — Selected as Regional Center for Future Earth in Asia
- 2016 — 3 Research Programs and Core Program established and RIHN Center reorganized



Inter-University Research Institute Corporation National Institutes for the Humanities (NIHU)

<https://www.nihu.jp/en>

NIHU carries out research on the human sciences and aims to create new value systems that will genuinely enrich our lives. NIHU is one of the four inter-university research institute corporations in Japan. It consists of six inter-university research institutes that specialize in humanities research. Each of the institutes is deeply involved in foundational research in their field as both domestic and international research centers. The six institutes interact in a complementary fashion and carry out research that transcends the frameworks of traditional disciplines. They also cooperate with other research organizations domestically and internationally in their attempt to identify and solve modern day issues.

Research and Communications

In 2016, two new centers, the Center for Transdisciplinary Innovation (CTI) and the Center for Information and Public Relations (CIP) were established to improve governance at NIHU.

The two Centers promote international collaborative research by building a research network around the six institutes. At the same time, the Centers communicate their research globally and are committed to developing next generation scholars.

Center for Transdisciplinary Innovation (CTI)

CTI strengthens mutual cooperation between the six institutes and leads NIHU's Transdisciplinary Projects that collaborate with universities and research institutions in Japan and overseas.

NIHU Transdisciplinary Projects

Institute-based Projects

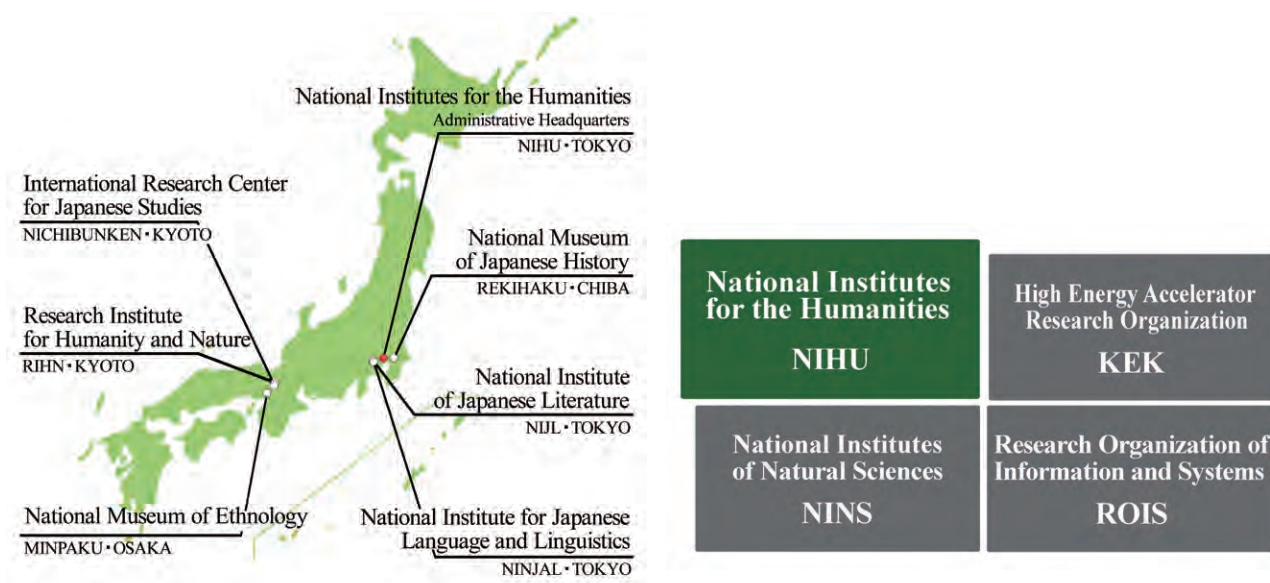
REKIHAKU: Constructing Integrated Studies of Cultural and Research Resources, and Renovating Sharing Infrastructures of Research Resources in Japanese History and Cultures
NIJL: Project to Build an International Collaborative Research Network for Pre-modern Japanese Texts
NINJAL: A New Integration of Japanese Language Studies based on Diverse Language Resources
NICHIBUNKEN: Historical and International Research into Popular Culture to Pursue New Images of Japan
RIHN: Transformation towards Sustainable Futures in Complex Human-Nature Systems in Asia
MINPAKU: Info-Forum Museum for Cultural Resources of the World

Multidisciplinary Collaborative Projects

Change of Local Communities and Reconstruction of Community Cultures after Disasters in Japanese Archipelago
Rethinking Eco-health in Asia
Development of a Field of Comprehensive Bibliographical Studies from an Interdisciplinary Perspective

Network-based Projects

NIHU Area Studies
Northeast Asia Modern Middle East South Asia
Japan-related Documents and Artifacts Held Overseas: NIHU International Collaborative Research and Utilization
Insights into Japan-related Overseas Artifacts and Documents from 19th-century Europe, Research and Use: Developing the Foundation for International Collaboration in Transmitting Japanese Culture
Research, Conservation and Utilization of the Marega Collection Preserved in the Vatican Library
A Survey, Study and Use of the Japan-related Documents and Artifacts in North America: Socio-historical Approach to 'Modern Overseas Material Informatics'
Coordination between Projects to Make Effective Use of Research Results



Four inter-university research institute corporations, and six inter-university research institutes specializing in humanities.

Center for Information and Public Relations (CIP)

CIP consolidates data related to human cultures by gathering information and research results from researchers affiliated with NIHU, and important documents and materials from the archives of the six institutes. The materials are made available to the public.

Advanced Collaboration Systems

nihuINT <https://int.nihu.jp/?lang=en&>

Comprehensive search engine for databases operated by the six NIHU institutes as well as other organizations.

Research Resource Databases and Publications

NIHU Repository

Cloud-based NIHU repository giving users comprehensive access to research papers from the six NIHU institutes.

Researcher's Profile <https://nrd.nihu.jp/search?m=home&l=en>

Comprehensive database containing information on researchers throughout NIHU.

Portal site for Japanese Studies https://guides.nihu.jp/japan_links

English Resource Guide for Japanese Studies and Humanities in Japan.

NIHU Magazine https://www.nihu.jp/ja/publication/nihu_magazine

A bilingual (Japanese and English-language) publication that covers topics such as the latest research trends, results and activities at NIHU.

NIHU Symposiums

NIHU organizes symposiums for the general public in order to share the comprehensive human culture related research resources and results it has accumulated.

36th: "Exhibiting Japan Abroad: Exploring the Significance of the 'KIZUNA: Japan | Wales | Design Exhibition,'" Oct, 2019

37th: "Boundaries of the 'natural' and 'supernatural'" Nov, 2019

38th: "Worlds of History Opened Up by Computers: Considering the Digital Humanities," Jan, 2020

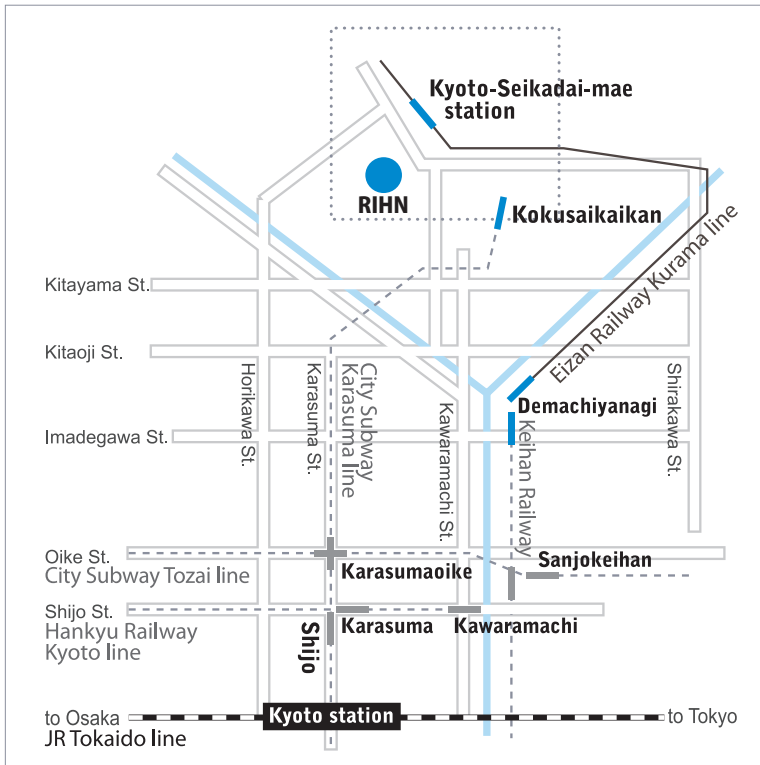
Industry-Academia Collaborations

NIHU collaborates with industry and other partners to give back its fruits of research to society.

Joint symposium with Ajinomoto Foundation for Dietary Culture

Joint lecture with Otemachi Academia

Access



By City Subway

From Kyoto Station, take the Karasuma Line to Kokusaikaikan Station (the last station), and transfer to Kyoto Bus.

By Kyoto Bus

From Kokusaikaikan Station, take bus No. 40, 50 or 52 to Chikyuken-mae.

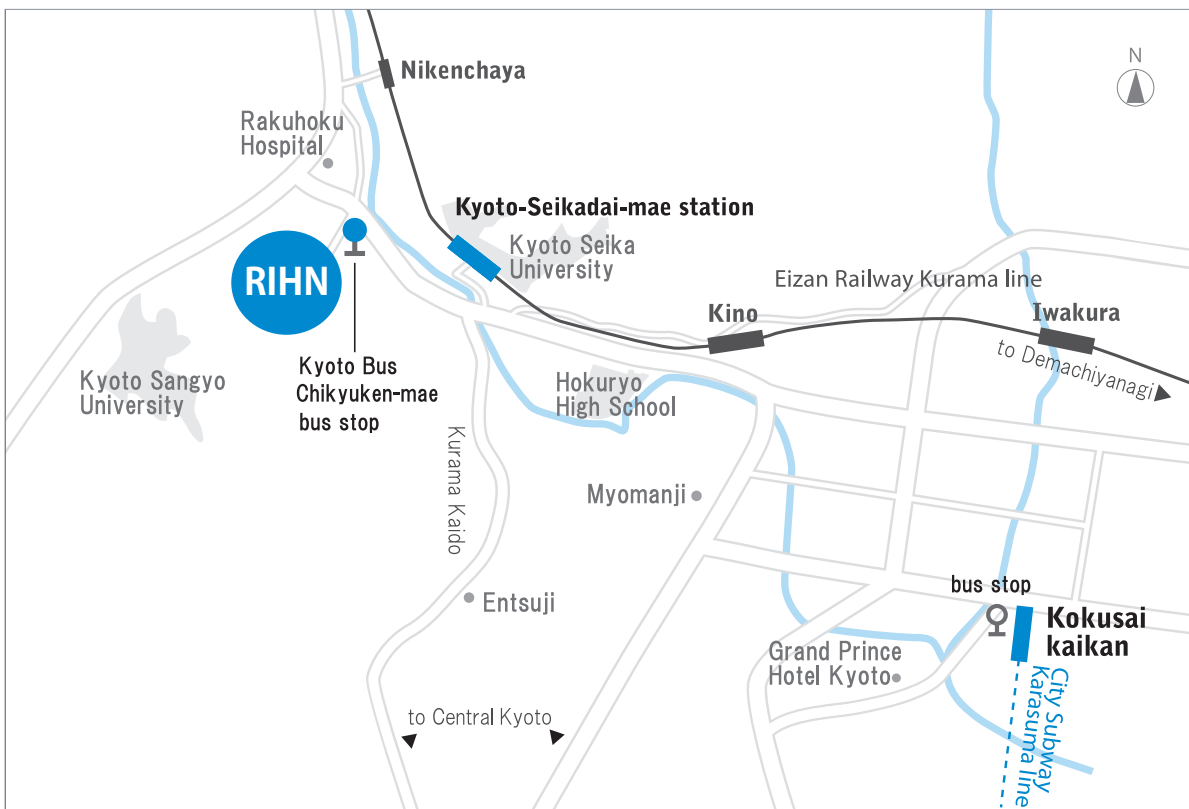
RIHN is at the base of the hill on your left.

By Eizan Railway

From Demachiyanagi Station in Kyoto City, take the Kurama Line.

Get off at Kyoto-Seikadai-mae Station.

RIHN is a 10-minute walk from the station.



RIHN Prospectus 2020-2021

Managing Editor: MALLEE, Hein

Designed by OKAZAWA Rina

Front Cover photo:

Manual Drying Process of Paddy Grain,

Pegu Region, Myanmar

Photo by MYO HAN HTUN

Back Cover photo:

Bountiful Sea, Sumatra, Indonesia

Photo by ABE Ken-ichi

Flying over RIHN in the autumn sky

Photo by WATANABE Kazuo



Inter-University Research Institute Corporation
National Institutes for the Humanities

Research Institute for Humanity and Nature

457-4 Motoyama, Kamigamo, Kita-ku, Kyoto
603-8047, JAPAN

TEL. +81-75-707-2100
FAX. +81-75-707-2106

kokusai@chikyu.ac.jp
www.chikyu.ac.jp

ISSN 2185-8055
August 2020

© RESEARCH INSTITUTE FOR HUMANITY AND NATURE

