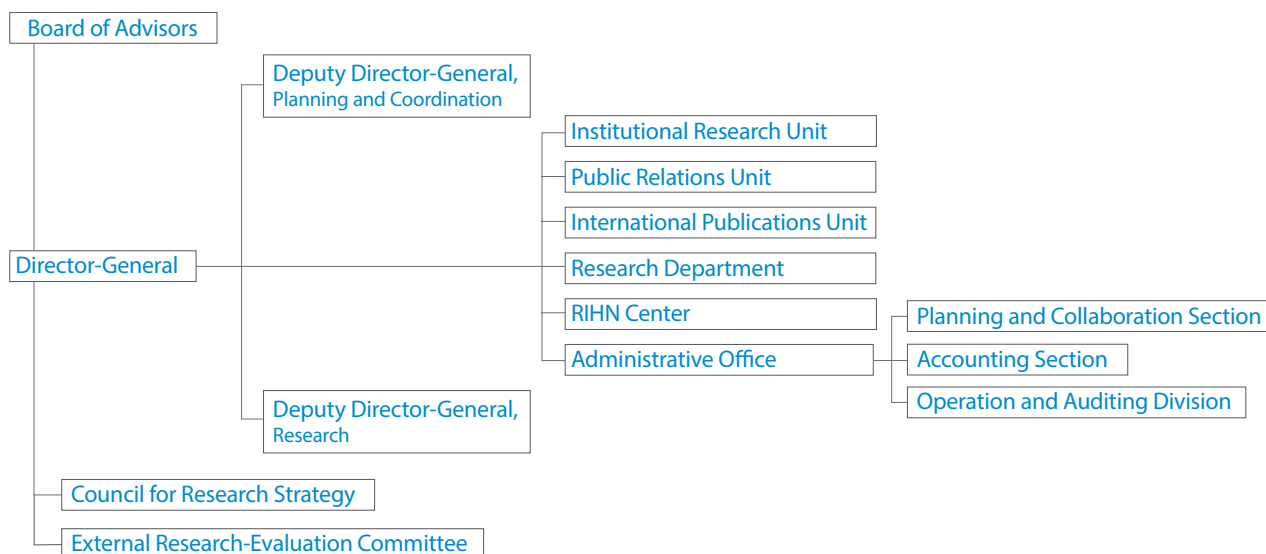


## Administrative Structure



## Financial Information

### Budget

Income		(Fiscal Year 2019)
Category	Amount (Yen in thousands)	
Subsidy for Operation	1,486,426	
Self Revenue	15,842	
<b>Total Earnings</b>	<b>1,502,268</b>	

### External Sources of Funding

External Sources of Funding		(Fiscal Year 2018)
Category	Amount (Yen in thousands)	
Fund for Promotion of Academic and Industrial Collaboration	101,429	
Grants-in-Aids for Scientific Research	94,160	
Donations for Research	9,885	



# Boards and Committees

\*As of June 1st, 2019

## Board of Advisors

Oversees personnel, planning, administration and operation of the institute

<p>ASAOKA Mie President, Kiko Network IKEYA Kazunobu Professor, National Museum of Ethnology KADA Yukiko Former Governor of Shiga Prefecture / Former President, Biwako Seikei Sport College KANZAWA Hiroshi Professor Emeritus, Nagoya University KOIKE Toshio Director, Global Centre of Excellence for Water Hazard and Risk Management</p>	<p>KONO Yasuyuki Vice President, Kyoto University Professor, Center for Southeast Asian Studies, Kyoto University NIIKAWA Tatsuro Professor, Graduate School, Doshisha University NOE Keiichi Professor Emeritus, Tohoku University OTSUKI Kyoichi Professor, Faculty of Agriculture, Kyushu University</p>	<p>MALLEE, Hein Deputy Director-General, RIHN TANIGUCHI Makoto Deputy Director-General, RIHN NAKASHIZUKA Tohru Program Director, RIHN SAIJO Tatsuyoshi Program Director, RIHN SUGIHARA Kaoru Program Director, RIHN</p>	<p>TAYASU Ichiro Professor, RIHN ISHII Reichiro Associate Professor, RIHN KUMAZAWA Terukazu Associate Professor, RIHN</p>
--------------------------------------------------------------------------------------------------------------------------------------------------------------------------------------------------------------------------------------------------------------------------------------------------------------------------------------------------------------------------------------------	---------------------------------------------------------------------------------------------------------------------------------------------------------------------------------------------------------------------------------------------------------------------------------------------------------------------------------------------------------	-------------------------------------------------------------------------------------------------------------------------------------------------------------------------------------------------------------------------------------------------------------	-----------------------------------------------------------------------------------------------------------------------------------------------

## External Research-Evaluation Committee

External review of research project proposals

### Domestic

KAWABATA Zen'ichiro  
Professor Emeritus, RIHN  
KONDO Akihiko  
Professor, Center for Environmental Remote Sensing / Department of Environmental Remote Sensing,  
Division of Earth and Environmental Sciences, Graduate School of Science and Engineering, Chiba  
University  
SUMI Akimasa  
Project Professor, The University of Tokyo Institute for Future Initiatives / Professor Emeritus, the  
University of Tokyo / Former President, National Institute for Environmental Studies  
TANAKA Masaru  
Director, Mounse Institute for Forest-Sato-Sea Studies / Professor Emeritus, Kyoto University  
TODA Takao  
Vice President for Human Security and Global Health, Japan International Cooperation Agency  
UCHIBORI Motomitsu  
Emeritus Professor, The Open University of Japan/ Emeritus Professor, Hitotsubashi University  
WADA Eitaro  
Member of the Japan Academy / Professor Emeritus, Kyoto University

### Overseas

BAI, Xuemei  
Professor, Urban Environment and Human Ecology, Fenner School of Environment and Society,  
Australian National University, Australia  
BINDER, Claudia  
Professor, Laboratory for Human-Environmental Relations in Urban Systems (HERUS), IIE - ENAC -  
EPFL, Switzerland  
LU, Yonglong  
Research Professor and Co-Director, Research Center for Eco-Environmental Sciences, Chinese  
Academy of Sciences, China  
ROMERO LANKAO, Patricia  
Senior Research Scientist, Transportation and Hydrogen Systems Center, National Renewable Energy  
Laboratory (NREL), U.S.A. / Institute Research Fellow, Mansuetto Institute for Urban Innovation,  
University of Chicago, U.S.A.  
SHRIVASTAVA, Paul  
Chief Sustainability Officer / Director, Sustainability Institute / Professor, Management and  
Organization, Smeal College of Business, The Pennsylvania State University, U.S.A.  
VAN DER LEEUW, Sander  
Professor, School of Human Evolution and Social Change / School of Sustainability, Arizona State  
University, U.S.A.  
WONG, R. Bin  
Distinguished Professor of History, Department of History, University of California, Los Angeles, U.S.A.  
ZHANG, Shiqiu  
Professor, College of Environmental Sciences and Engineering, Peking University, China

## Council for Research Strategy

Oversees research strategy, personnel, project, and evaluation system

YASUNARI Tetsuzo	Director-General	SAIJO Tatsuyoshi	Specially Appointed Professor	KUMAZAWA Terukazu	Associate Professor
MALLEE, Hein	Deputy Director-General	SUGIHARA Kaoru	Specially Appointed Professor	KATSUHIRA Hiroshi	Administrative Director
TANIGUCHI Makoto	Deputy Director-General	TAYASU Ichiro	Professor		
NAKASHIZUKA Tohru	Specially Appointed Professor	ISHII Reichiro	Associate Professor		

## Senior Advisor

TACHIMOTO Narifumi

## Emeritus Professors

NAKANISHI Masami  
WADA Eitaro  
HIDAKA Toshitaka  
NAKAWO Masayoshi  
FUKUSHIMA Yoshihiro  
AKIMICHI Tomoya  
KAWABATA Zen'ichiro  
OSADA Toshiaki  
TACHIMOTO Narifumi  
SATO Yo-Ichiro  
MOJI Kazuhiko  
KADA Ryohei  
NAKANO Takanori  
SATO Tetsu  
KUBOTA Jumpei

## RIHN STAFF

■ DIRECTOR-GENERAL	YASUNARI Tetsuzo
■ DEPUTY DIRECTOR-GENERAL (Planning and Coordination)	MALLEE, Hein
■ DEPUTY DIRECTOR-GENERAL (Research)	TANIGUCHI Makoto

## ADMINISTRATIVE OFFICE

■ ADMINISTRATIVE DIRECTOR KATSUHIRA Hiroshi

### ■ PLANNING AND COLLABORATION SECTION

Head HIGASHI Hideaki  
General Affairs and Planning  
Subsection  
Head BIVONE Junko  
Clerk KOGISO Ayana  
Clerk MASUDA Maho  
Personnel Subsection  
Head NAGATA Yukihiko  
Chief MIMOTO Natsumi  
Clerk MATSUKI Takeyuki  
Clerk NAGATA Satoko  
International Affairs Subsection  
Head ZENIZUKA Rie

Collaboration Unit  
Head SAKAMOTO Kohei  
Research Planning Subunit  
Head YUKI Toshitake  
Cooperative Research Support Subunit  
Head SAKAMOTO Kohei  
Clerk SAWAMURA Takahiro  
Information and Library Subunit  
Chief YAMASHITA Takayoshi

### ■ ACCOUNTING SECTION

Head KIMURA Makoto  
Deputy Head KITaura Toshiaki  
Financial Planning Subsection  
Head TOJIMA Mitsuo  
Chief HONDA Takayuki  
Clerk KOHO Sayaka  
Facility Management Subsection  
Head NAKAJIMA Kohei  
Chief ISHII Hiroya  
S.A.Specialist ZUI Zoujin  
Accounting Subsection  
Head SHIBUYA Hiroyuki  
Procurement Subsection  
Head HARUOKA Junichiro  
Clerk KARIYA Midori  
Clerk NAKANISHI Keita

### ■ OPERATION AND AUDITING DIVISION

Head KIMURA Makoto  
Auditing Subunit  
Head TOJIMA Mitsuo  
Chief HONDA Takayuki

## RESEARCH DEPARTMENT

### Program Directors

NAKASHIZUKA Tohru	Forest Ecology, Biodiversity
SAIJO Tatyoshi	Future Design
SUGIHARA Kaoru	Economic History, Environmental History
TANIGUCHI Makoto	Hydrology

### Professors

SAKAKIBARA Masayuki	Earth and Environmental Sciences
TAYASU Ichiro	Isotope Ecology, Isotope Environmental Science
YAMAUCHI Taro	Human Ecology

### Associate Professors

KANEMOTO Keiichiro	Industrial Ecology, Environmental Economics
KONDO Yasuhisa	Archaeology, GIS, Open Science
KOZAN Osamu	Hydrology
MCGREEVY, Steven R.	Environmental Sociology
OKUDA Noboru	Ecological Science
YOSHIDA Takehito	Ecology

### Specialy Appointed Professors

NAKASHIZUKA Tohru	Forest Ecology, Biodiversity
SAIJO Tatyoshi	Future Design
SUGIHARA Kaoru	Economic History, Environmental History

### Visiting Professors

BABA Kenji	Environmental Policy, Consensus Building
FUJII Shigeo	Water Environment and Sanitation, Micropollutants Contamination
HABU Junko	Environmental Anthropology, East Asian Archaeology
HAYASHI Hiroaki	Plant Nutrition and Fertilizer, Sustainable Development Studies

HAYASHIDA Sachiko	Atmospheric Environmental Science, Remote Sensing
ISHIKAWA Satoshi	Conservation Ecology, Global Fisheries Science
KANIE Norichika	Earth System Governance
KASUGA Fumiko	Food Safety Planning
KAWASAKI Masahiro	Atmospheric Chemistry
KUSAGO Takayoshi	Action-based Development Studies
MANAGI Shunsuke	Environmental Economics, Urban Engineering
MIZUNO Kosuke	Indonesian Area Research
NAKATSUKA Takeshi	Biogeochemistry, Paleoclimatology
OKABE Akiko	Architecture, Socio-cultural Environmental Studies
SHIBATA Akira	Rural Development, Biomass Carbonization
TANAKA Ueru	Agro-ecosystems Studies
YONEMOTO Shohei	History and Philosophy of Science

### Visiting Associate Professors

ENDO Aiko	Marine and Coastal Policy, Fishery Economics
KIKUCHI Naoki	Environmental Sociology
KOBASHI Takuro	Climate Change, Renewable Energy
MOREAU, Yoann	Anthropology
TERADA Masahiro	History, Metahistory
WATANABE Kazuo	Area Studies

### Senior Researchers

MASUHARA Naoki	Public Administration Studies and Energy Policy
NAKAO Seiji	Historical Anthropology
NGUYEN, Tien Hoang	Geoinformatics, Environmental Modeling and Mapping
RUPPRECHT, Christoph D. D.	Geography
TAMURA Norie	Natural Resource Management

### Researchers

FUJIYOSHI Lei	Isotope Environmental Science
HAYASHI Koji	Ecological Anthropology
HUANG, Wanhui	Regional Environmental Studies, GIS
IKEYA Tohru	Aquatic Ecology, Environmental Science
ISHIBASHI Hiroyuki	Area Studies, Environmental Local History
ISHIDA Takuya	Forest Environmental Science
KAJITA Ryosuke	Area Studies
KIMIJIMA Satomi	Remote Sensing, Gender and Development Studies
KOBAYASHI Kunihiko	International Environmental Law
KOBAYASHI Mai	Environmental Sociology
KUANG Xiaoxu	Analytical Chemistry, Environmental Chemistry
LEE, Sanghyun	Agricultural Water Management
NAKAHARA Satoe	Cultural Anthropology, Peace Studies
ODA Kimisato	Landscape Architecture, Cultural Landscape

OSAWA Takamasu	Social Anthropology
OTA Kazuhiko	Japanese Environmental Ethics
SHIMIZU Takao	Archaeology, Ethnology
SHINKAI Rika	Cultural Anthropology
SHIODERA Satomi	Forest Ecology
SPIEGELBERG, Maximilian	Environmental Management
UEHARA Yoshitoshi	Ecology
Win Thiri Kyaw	Neurology and Clinical Pharmacology
YAMADA Taiki	Graph Theory, Optimal Transport Theory
YAMANAKA Manabu	Atmosphere-Hydrosphere Sciences

### Research Associates

DOI Minako	KOBAYASHI Yuku	SUETSUGU Satoko
HONMA Saki	MATSUOKA Yuku	TAKEHARA Mari
KARATSU Fukiko	Myo Han Htun	WATANABE Kirie
KATAFUCHI Yuya	NAKAI Minami	YAMAMOTO Aya
KATSURA Tomomi	SENDA Masako	
KIMURA Ayako	SHIMAUCHI Risa	

## RIHN Center

**DIRECTOR** MALLEE, Hein

**Deputy Director** TAYASU Ichiro

### Heads of Divisions

Laboratory and Analysis Division	TAYASU Ichiro
Information Resources Division	KUMAZAWA Terukazu
Collaboration Division	ISHII Reiichiro
Communication and Production Division	ABE Ken-ichi
Future Earth Division	MALLEE, Hein

### Professors

ABE Ken-ichi	Ecological Anthropology
MALLEE, Hein	Social Science
TANIGUCHI Makoto	Hydrology
TAYASU Ichiro	Isotope Ecology, Isotope Environmental Science

### Associate Professors

ISHII Reiichiro	Theoretical Ecology
KONDO Yasuhisa	Archaeology, GIS, Open Science
KUMAZAWA Terukazu	Environmental Planning, Regional Informatics
NILES, Daniel	Geography
SHIN Kicheol	Petrology, Geochemistry, Isotope Geology

### Assistant Professor

ONISHI Yuku	Biogeography, Macroecology
-------------	----------------------------

### Specialy Appointed Associate Professor

LAMBINO, Ria	Environmental Governance
--------------	--------------------------

### Research Fellow, NIHU Center for Transdisciplinary Innovation (Ecohealth)/ Specialy Appointed Assistant Professor

JIANG Hongwei	Human Ecology
---------------	---------------

### Research Fellow, NIHU Center for Information and Public Relations/ Specialy Appointed Assistant Professor

KIM, Satbyul	Cultural Anthropology
--------------	-----------------------

### Researchers

MIMURA Yutaka	Architectural History, Urban History, Historical GIS
SHIMADA Nahoko	Study of Ecological Thought
SODA Katsuya	Forced Migration Studies
YABUSAKI Shiho	Isotope Hydrology
YOSHIMIZU Chikage	Biogeochemistry

### Research Associates

KURATA Junko	
OKA Masami	
OKAMOTO Takako	
UEDA Sachiko	
YASUDA Akiko	
YUZEN Natsuko	

## Institutional Research Unit

**HEAD** TANIGUCHI Makoto

### Members of Unit

TAYASU Ichiro	YAMAUCHI Taro	KANEMOTO Keiichiro	KONDO Yasuhisa	KUMAZAWA Terukazu
---------------	---------------	--------------------	----------------	-------------------

### Specialy Appointed Assistant Professor

WAKAMATSU Hisanori
--------------------

## International Publications Unit

**HEAD** SUGIHARA Kaoru

### Members of Unit

YASUNARI Tetsuzo	ABE Ken-ichi	MALLEE, Hein	NILES, Daniel
------------------	--------------	--------------	---------------

## Public Relations Unit

**HEAD** MALLEE, Hein

**DEPTUTY HEAD** HIGASHI Hideaki

### Members of Unit

ABE Ken-ichi	YOSHIDA Takehito	KUMAZAWA Terukazu
MCGREEVY, Steven R.	KIM, Satbyul	

### Specialy Appointed Specialist

TERAMOTO Shun
---------------

### Research Associate

KIMURA Aoi
------------

## A Brief History of RIHN

- 1993 — Prime minister's advisory panel on the Global Environment in 21st Century launched
- 1995 — "On the Promotion of Global Environmental Studies" published by The Science Council of Japan
- 1997 — Report "On the core research institute for Global Environmental Studies" published by MEXT (Ministry of Education, Culture, Sports, Science and Technology)
- 2001 — RIHN Established on the Kyoto University campus  
— HIDAKA Toshitaka, Director-General
- 2002 — RIHN relocated to the former Kasuga Primary School  
— The 1st RIHN Forum
- 2004 — RIHN becomes a member of the National Institutes for the Humanities  
— The 1st RIHN Public Seminar
- 2005 — The 1st RIHN Area Seminar
- 2006 — RIHN relocates to current facilities in northern Kyoto  
— The 1st RIHN International Symposium
- 2007 — TACHIMOTO Narifumi appointed as the second Director-General  
— The Center for Coordination, Promotion and Communication established  
— First research projects concluded
- 2008 — The 1st Collaborative Symposium with the International Research Center for Japanese Studies
- 2009 — The Earth Forum Kyoto and Earth Hall of Fame Kyoto Award established
- 2010 — Core Research Hub established  
— The RIHN Encyclopedia of Global Environmental Studies published
- 2011 — RIHN 10 year anniversary and publication  
— GEC-Japan network established
- 2013 — YASUNARI Tetsuzo appointed as the third Director-General  
— The Center for Coordination, Promotion and Communication reorganized into the Center for Research Development and the Center for Research Promotion
- 2014 — Selected as Regional Center for Future Earth in Asia
- 2016 — 3 Research Programs and Core Program established and RIHN Center reorganized



## Inter-University Research Institute Corporations National Institutes for the Humanities (NIHU)

<http://www.nihu.jp/>

NIHU carries out research on the human sciences and aims to create new value systems that will genuinely enrich our lives. NIHU is one of the four inter-university research institute corporations in Japan. It consists of six inter-university research institutes that specialize in humanities research. Each of the institutes is deeply involved in foundational research in their field as both domestic and international research centers. The six institutes interact in a complementary fashion and carry out research that transcends the frameworks of traditional disciplines. They also cooperate with other research organizations domestically and internationally in their attempt to identify and solve modern day issues.

### Research and Communications

In 2016, two new centers, the Center for Transdisciplinary Innovation (CTI) and the Center for Information and Public Relations (CIP) were established to improve governance at NIHU.

The two Centers promote international collaborative research by building a research network around the six institutes. At the same time, the Centers communicate their research globally and are committed to developing next generation scholars.

### Center for Transdisciplinary Innovation (CTI)

CTI strengthens mutual cooperation between the six institutes and leads NIHU's Transdisciplinary Projects that collaborate with universities and research institutions in Japan and overseas.

#### **NIHU Transdisciplinary Projects**

##### **Institute-based Projects**

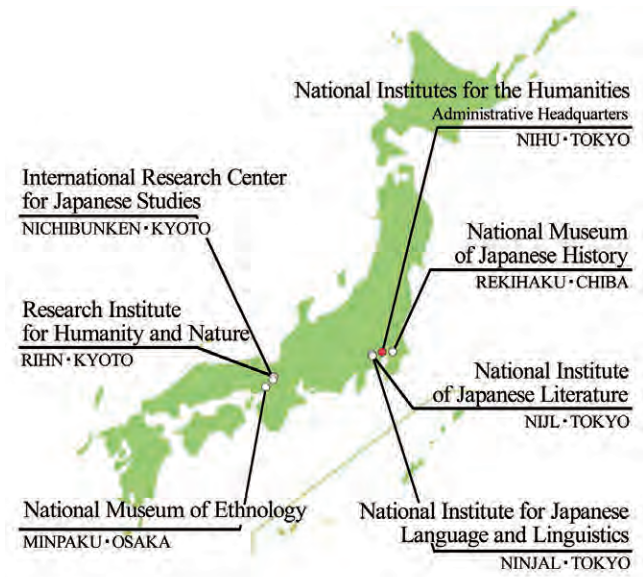
- REKIHAKU: Constructing Integrated Studies of Cultural and Research Resources, and Renovating Sharing Infrastructures of Research Resources in Japanese History and Culture
- NIJL: Project to Build an International Collaborative Research Network for Pre-modern Japanese Texts
- NINJAL: A New Integration of Japanese Language Studies based on Diverse Language Resources
- NICHIBUNKEN: Historical and International Research into Popular Culture to Pursue New Images of Japan
- RIHN: Transformation towards Sustainable Futures in Complex Human-Nature Systems in Asia
- MINPAKU: Info-Forum Museum for Cultural Resources of the World

##### **Multidisciplinary Collaborative Projects**

- Change of Local Communities and Reconstruction of Community Cultures after Disasters in Japanese Archipelago
- Rethinking Eco-health in Asia
- Development of a Field of Comprehensive Bibliographical Studies from an Interdisciplinary Perspective

##### **Network-based Projects**

- NIHU Area Studies
  - Northeast Asia Modern Middle East South Asia
- Japan-related Documents and Artifacts Held Overseas: NIHU International Collaborative Research and Utilization
  - Insights into Japan-related Overseas Artifacts and Documents of the 19th Century in Europe through Research and Use
  - Research, Conservation and Utilization of the Marega Collection Preserved in the Vatican Library
  - Survey, Study and Use of the Japan-related Documents and Artifacts in North America
  - Coordination between Projects to Make Effective Use of Research Results



The NIHU Headquarters and six Inter-University Research Institutes



The four Inter-University Research Institute Corporations

## Center for Information and Public Relations (CIP)

CIP consolidates data related to human cultures by gathering information and research results from researchers affiliated with NIHU, and important documents and materials from the archives of the six institutes. The materials are made available to the public.

### Advanced Collaboration Systems

nihuINT <https://int.nihu.jp/?lang=en&>

Comprehensive search engine for databases operated by the six NIHU institutes as well as other organizations.

### Research Resource Databases and Publications

NIHU Repository

Cloud-based NIHU repository giving users comprehensive access to research papers from the six NIHU institutes.

Researcher's Profile <https://nrd.nihu.jp/search?m=home&l=en>

Comprehensive database containing information on researchers throughout NIHU.

Portal site for Japanese Studies [https://guides.nihu.jp/japan\\_links](https://guides.nihu.jp/japan_links)

English Resource Guide for Japanese Studies and Humanities in Japan.

NIHU Magazine [https://www.nihu.jp/ja/publication/nihu\\_magazine](https://www.nihu.jp/ja/publication/nihu_magazine)

A bilingual (Japanese and English-language) publication that covers topics such as the latest research trends, results and activities at NIHU.

### NIHU Symposiums

NIHU organizes symposiums for the general public in order to share the comprehensive human culture related research resources and results it has accumulated.

33rd: "Rediscovery of History in Kagoshima: For New Perspectives of Regional Culture," Sep, 2018

34th: "Studying the Region with the People: Methods for Utilizing Cultures of the Region in Japan and Taiwan," Nov, 2018

35th: "Sound that Connects the Middle East to Japan: Exploring Human Coexistence in Global Society through Music," Mar, 2019

### Industry-Academia Collaborations

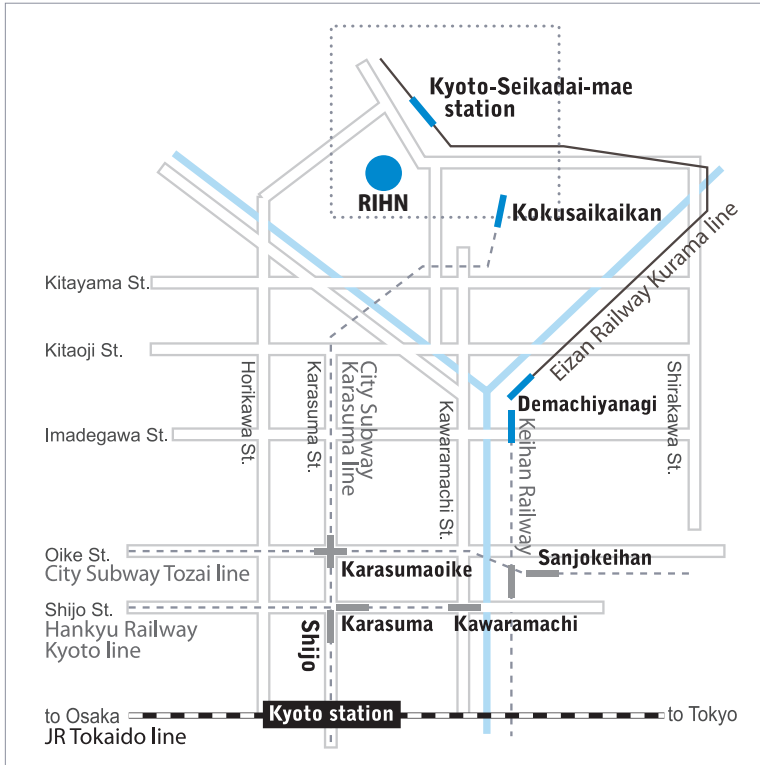
NIHU collaborates with industry and other partners to give back its fruits of research to society.

Joint symposium with Ajinomoto Foundation for Dietary Culture

Joint lecture with Otemachi Academia

Joint symposium with Japan Foundation

## Access



### By City Subway

From Kyoto Station, take the Karasuma Line to Kokusaikaikan Station (the last station), and transfer to Kyoto Bus.

### By Kyoto Bus

From Kokusaikaikan Station, take bus No. 40, 50 or 52 to Chikyuken-mae.

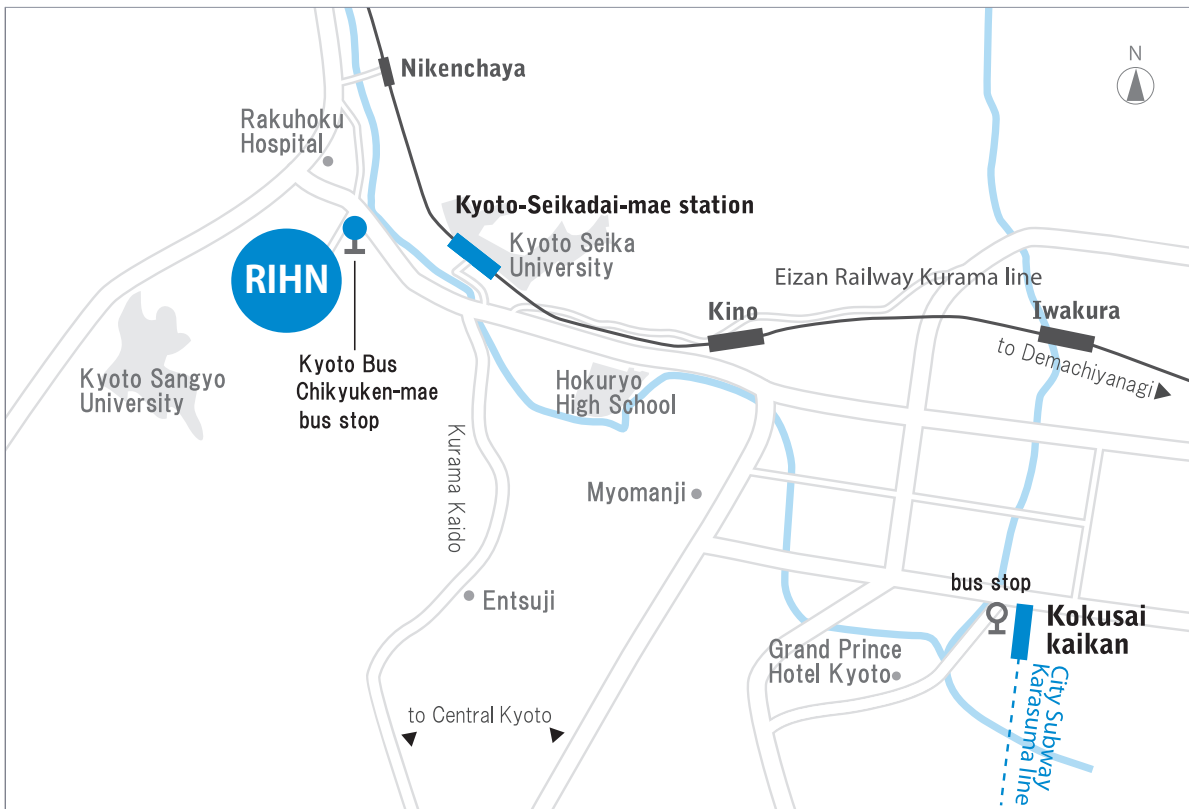
RIHN is at the base of the hill on your left.

### By Eizan Railway

From Demachiyanagi Station in Kyoto City, take the Kurama Line.

Get off at Kyoto-Seikadai-mae Station.

RIHN is a 10-minute walk from the station.



### RIHN Prospectus 2019-2020

Managing Editor: MALLEE, Hein

Designed by OKAZAWA Rina

#### Front Cover photo:

Over the ocean, Mejjatto Islet, Marshall Islands

Photo by NAKAHARA Satou

#### Back Cover photo:

Farm working, Islamabad, Pakistan

Photo by HIGASHI Hideaki

Flying over RIHN in the autumn sky

Photo by WATANABE Kazuo



Inter-University Research Institute Corporation  
National Institutes for the Humanities  
**Research Institute for  
Humanity and Nature**

457-4 Motoyama, Kamigamo, Kita-ku, Kyoto  
603-8047, JAPAN

TEL. +81-75-707-2100  
FAX. +81-75-707-2106

kokusai@chikyu.ac.jp  
www.chikyu.ac.jp

ISSN 2185-8055  
June 2019

© RESEARCH INSTITUTE FOR HUMANITY AND NATURE

