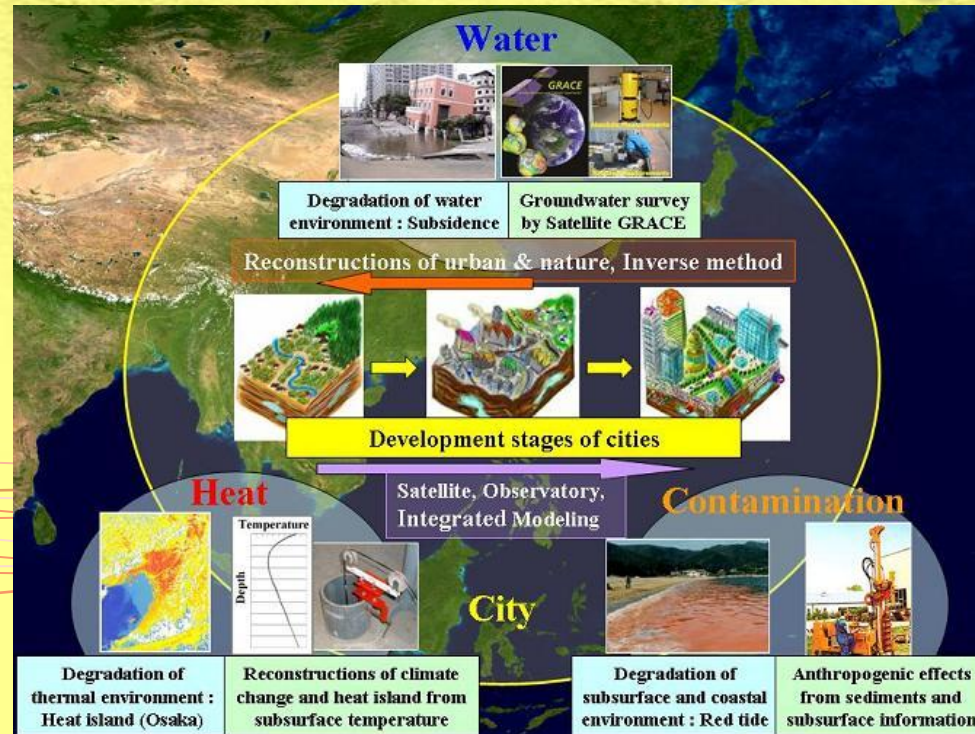


Meeting in LIPI 05/03/08

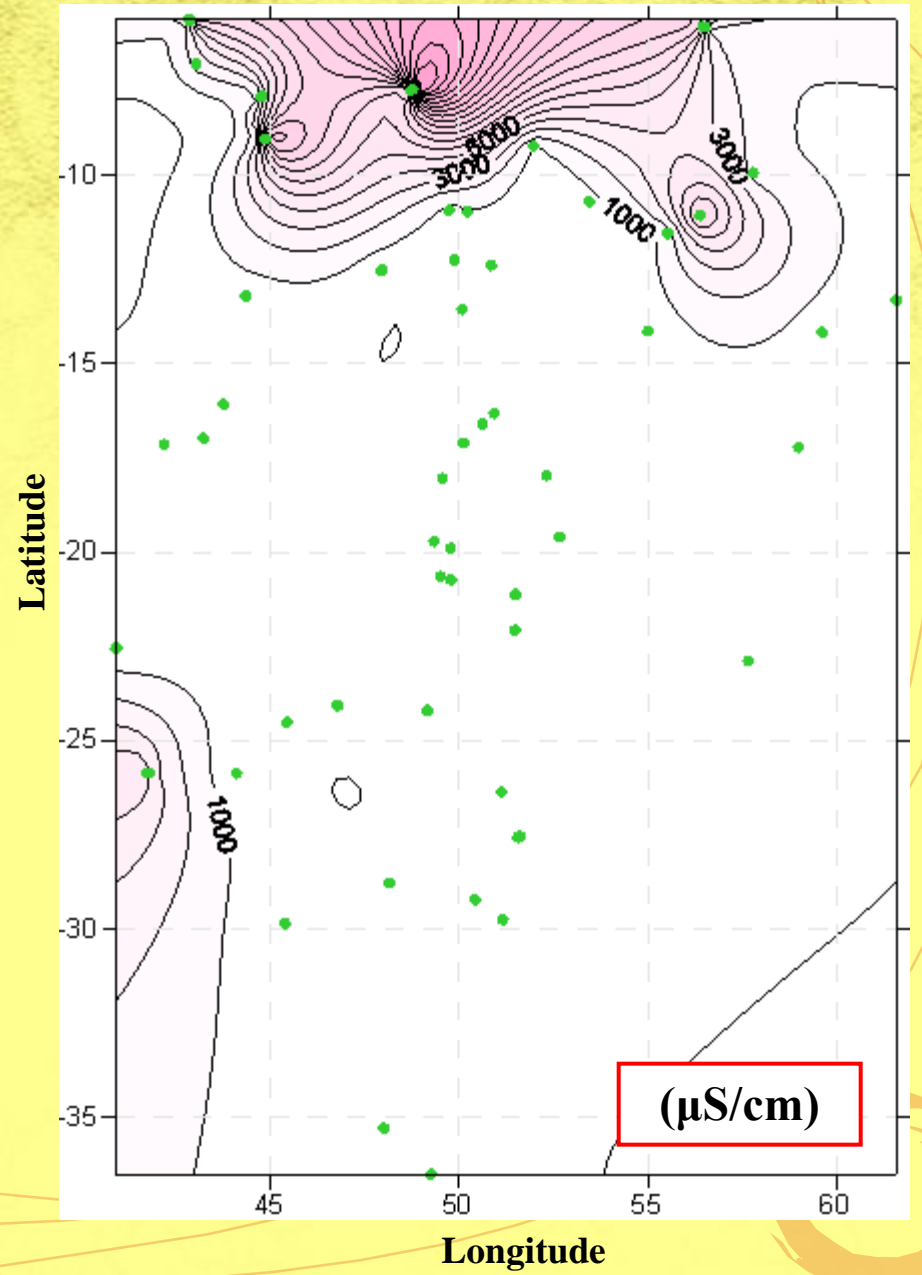
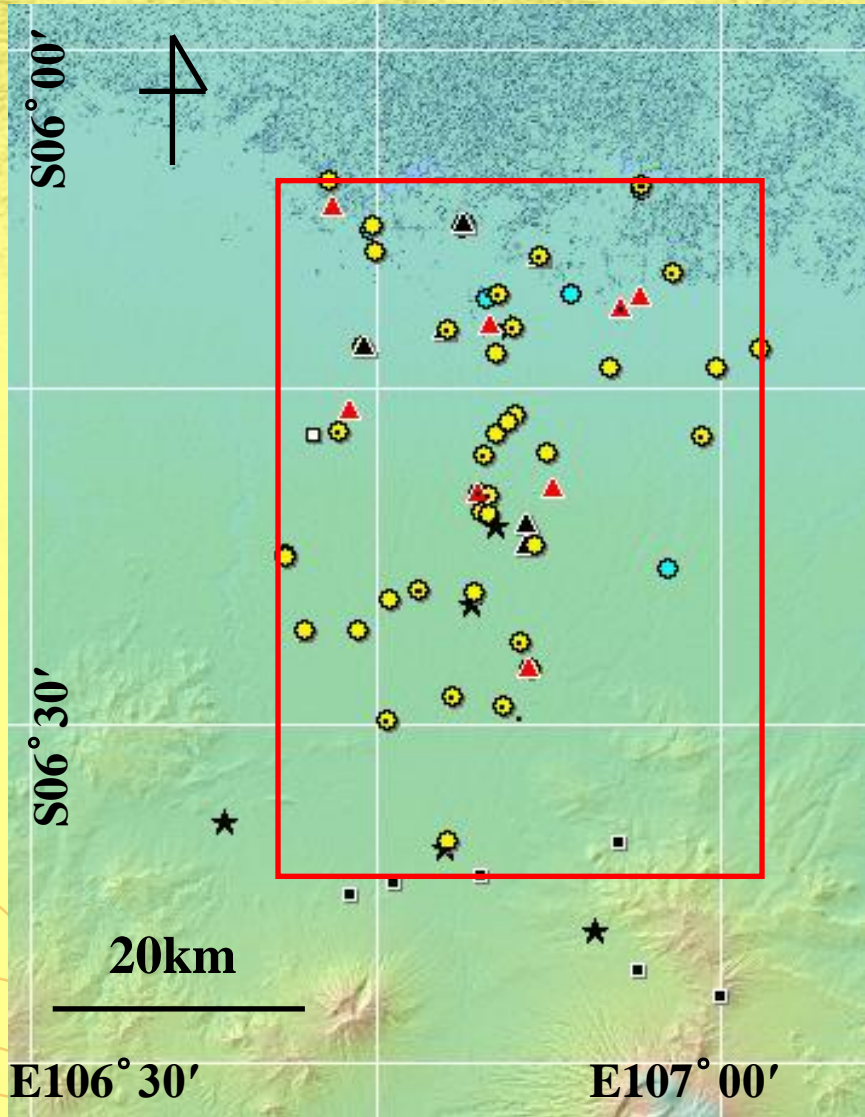
# Overview of 2<sup>nd</sup>. Jakarta Intensive Research in RIHN – LIPI Joint Project

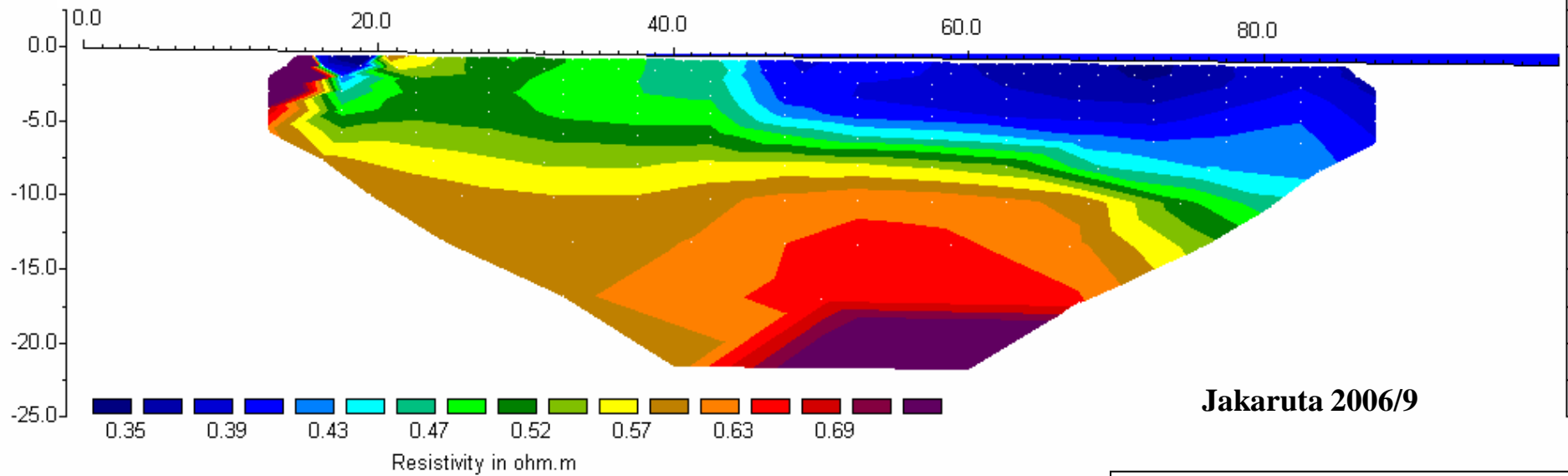


- Material Group
- Groundwater Group

Shin-ichi Onodera\* (Grad. School of Integrated Sciences, Hiroshima Univ.)

# Seawater intrusion (2006)





# Resistivity measurements

<u>Igneous rocks</u>	(ohm-m)
Granite	$3 \times 10^2 \sim 10^4$
Basalt	$10^3 \sim 10^5$
<u>Sedimentary rocks</u>	
Glabel	$10 \sim 10^4$
Mud	$1 \sim 10^2$
<u>Pore water</u>	
low EC	$2 \sim 8 \times 10$
salt water	0.3

# Research members in Japanese side

## ● Material Group;

- *Tomotoshi Ishitobi* [Research Institute for Humanity and Nature]
- *Yu Umezawa* [Nagasaki University]
- *Takahiro Hosono* [Akita University]
- *Mitsuyo Saito* [JSPS fellowship, Hiroshima Univ.]
- *Yuta Shimizu* [Grad. Student, Hosei Univ.]

## ● Groundwater Group;

- *Makoto Kagabu* [Grad. Student, Kumamoto Univ.]
- *Kiyohiro Ota* [Grad. Student, Tsukuba Univ.]

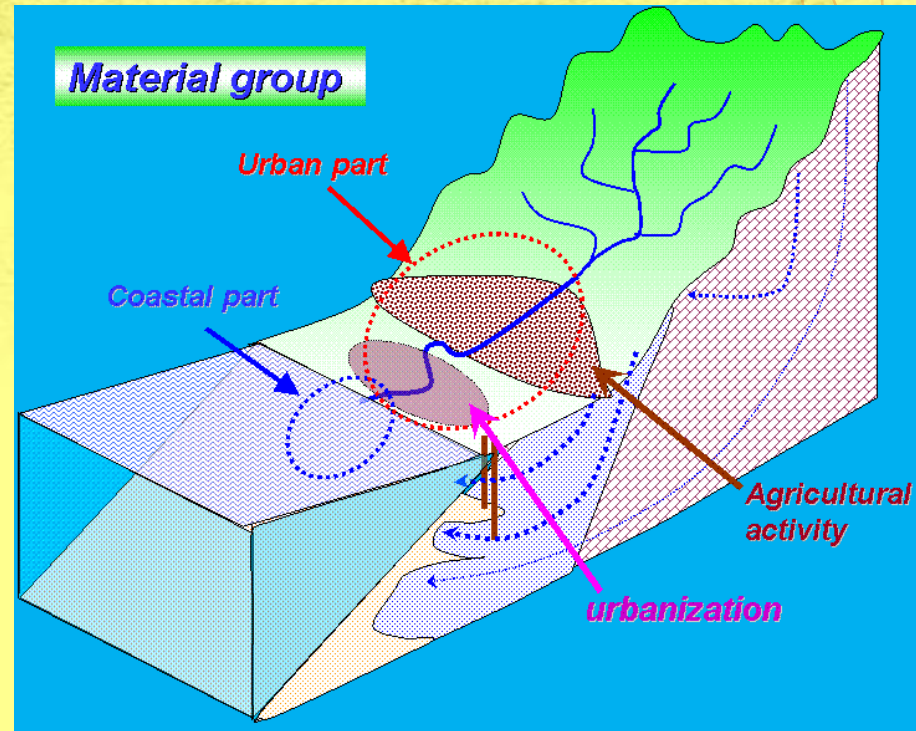
## ● Inter-Group;

- *R.F. Rubis* [Grad. Student, Chiba Univ.]



# Contents

- Groundwater sampling  
*by Kagabu*
  - Groundwater Group
  - Material Group
- SGD observation
  - Material Group
- Rn measurement; by Yu*
- Piezometer; by Mitsuyo*
- Seepagemeter; by Tomo*



\* Training course of Hiroshima University