

GRAVITY GROUP

Y. Fukuda, J. Nishijima, S. Ueno,
P. Eko

What we did

- Point survey (Sep.6-8)
 - for absolute gravity measurements
 - Select potential 4 points
- Gravity survey (Sep. 9-12)
 - for estimating subsurface structure
 - 2 E-W profiles and 1 N-S profile
- Precise GPS (Sep. 9-12)
 - For estimating subsidence
 - 4 points (KUNI, PIKA, ANCH, CIBU)

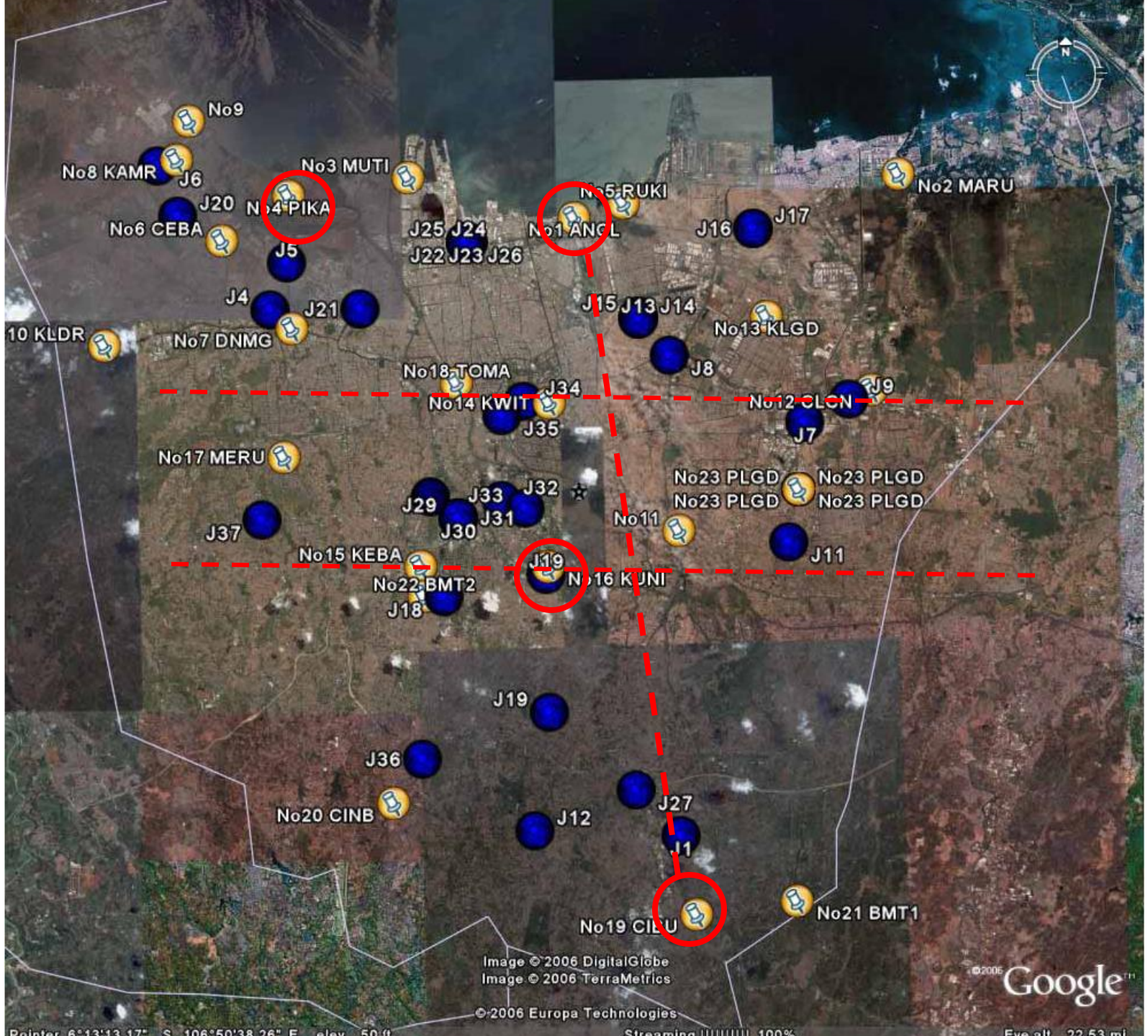


Image © 2006 DigitalGlobe
Image © 2006 TerraMetrics

©2006 Google™

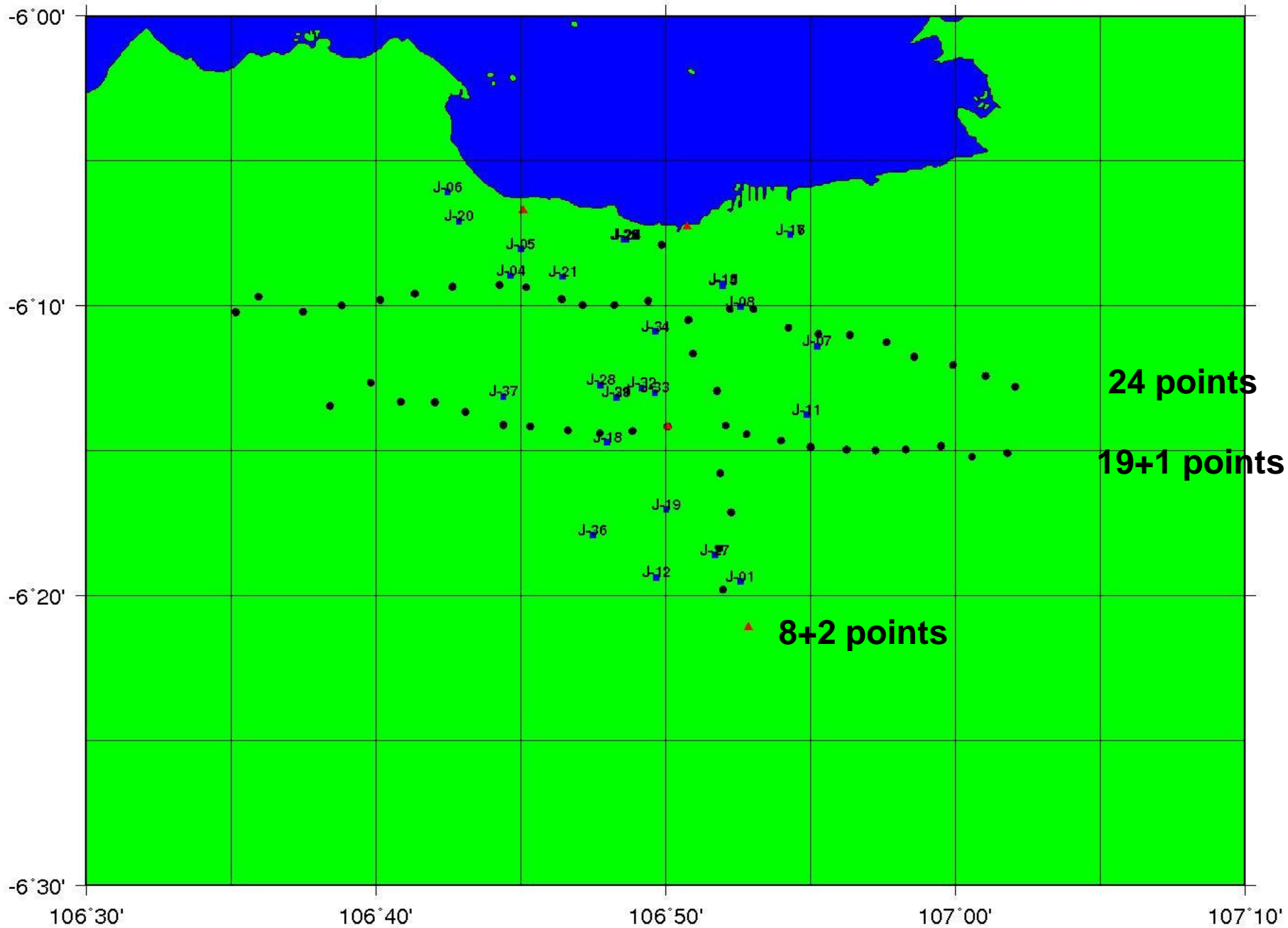
©2006 Europa Technologies

Point: 6°13'13.17" S, 106°50'38.26" E, elev: 50 ft

Streaming: 100%

Eye alt: 22.53 mi

Gravity station map





PATRA
RESIDENTIAL









