

# 御前浜調査

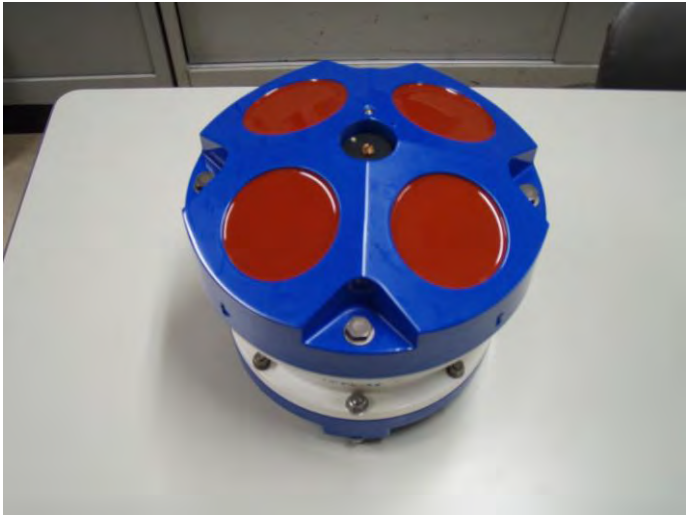
海洋観測

河川観測

二枚貝分布調査

神戸大  
奈良教育大

林 美鶴  
藤井智康



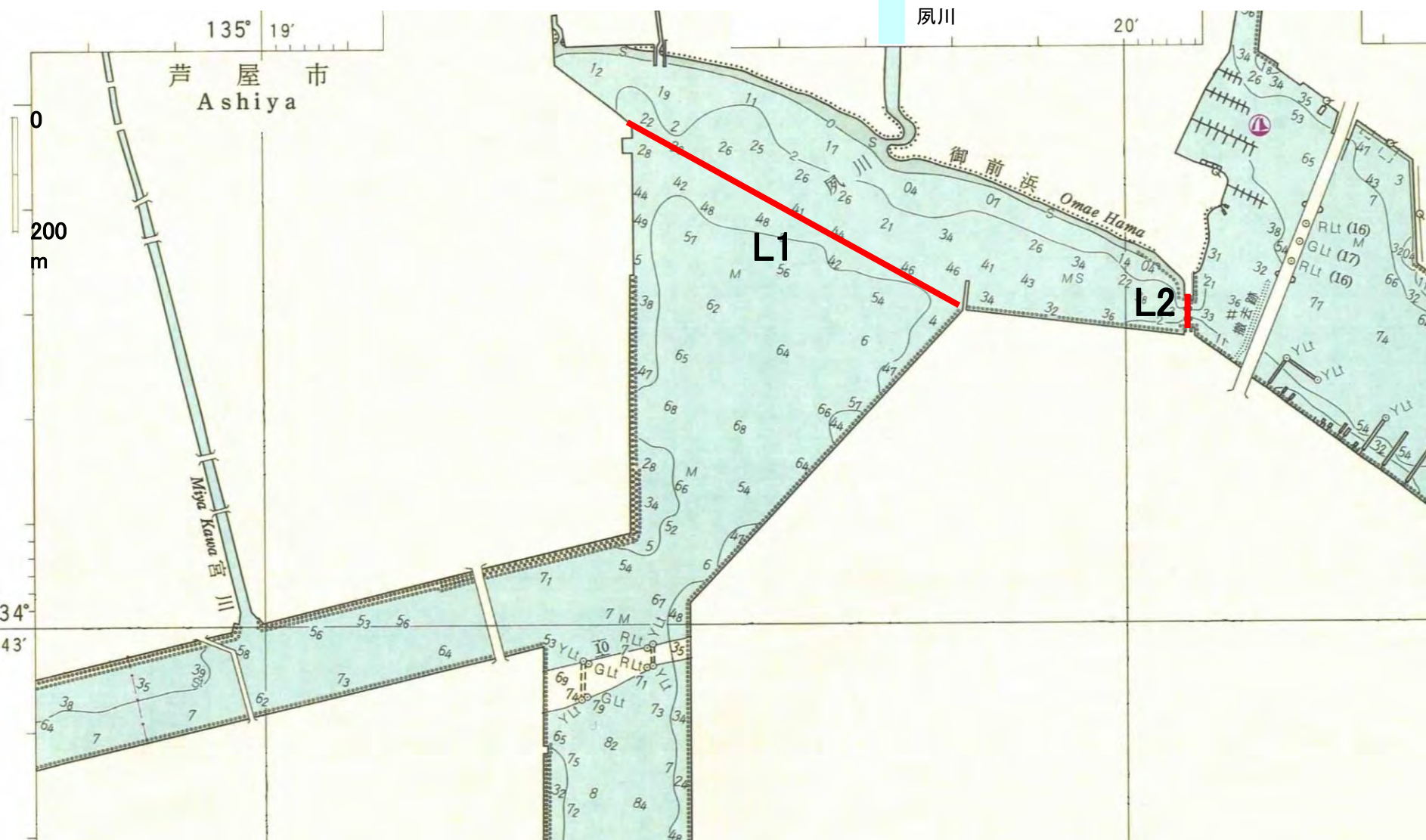
ADCP本体



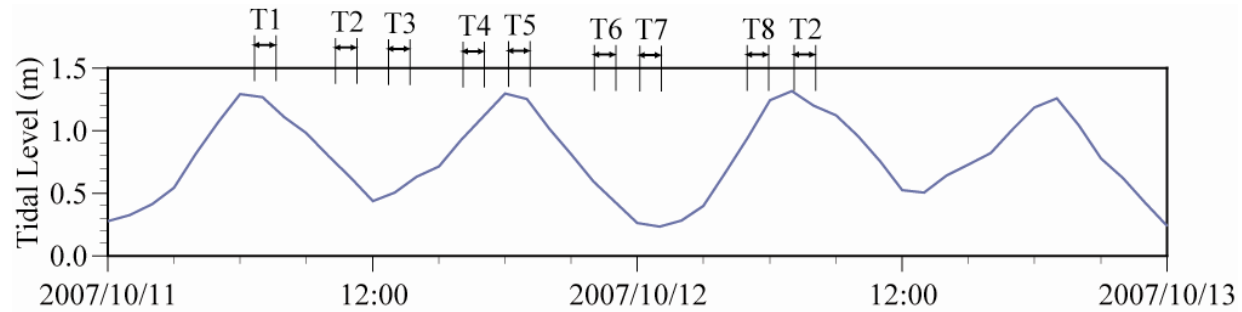
River Boat



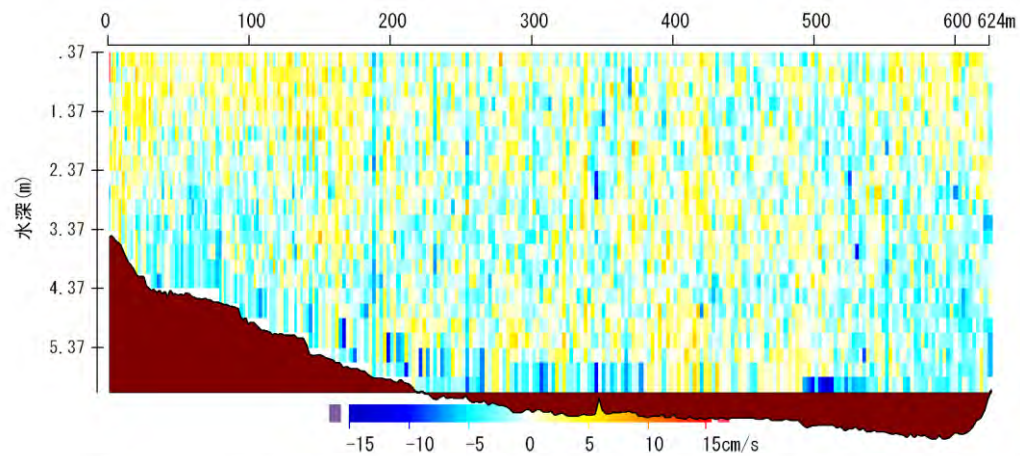
# ADCP調査測線



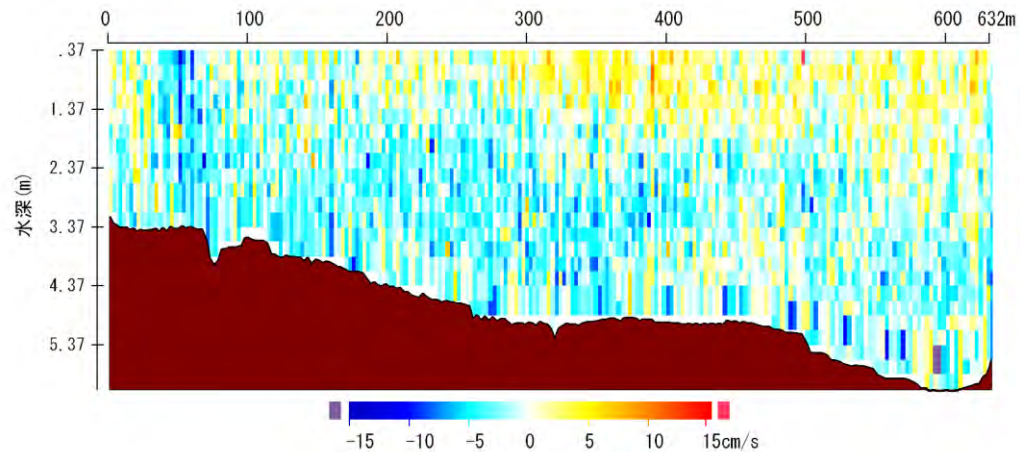
# North Component Velocity (Line 1)



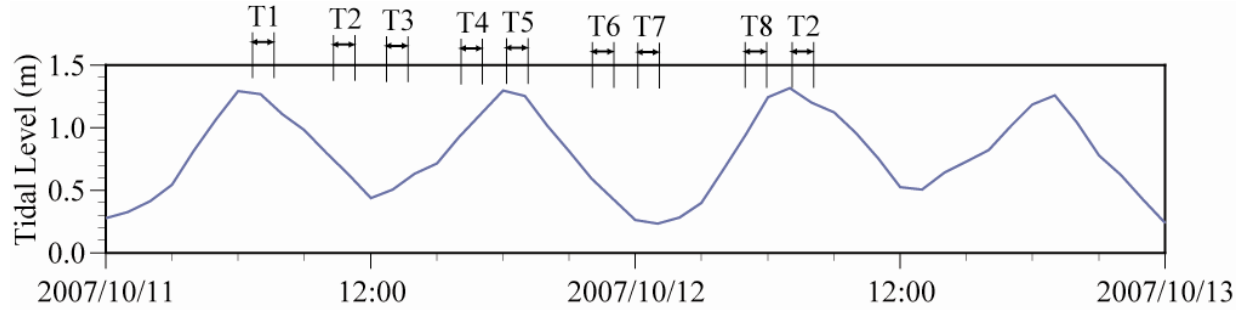
**T1**



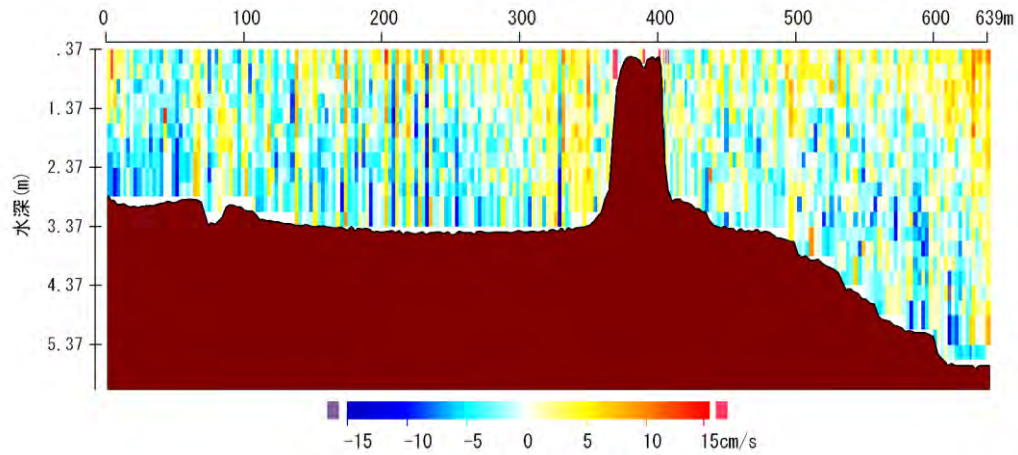
**T2**



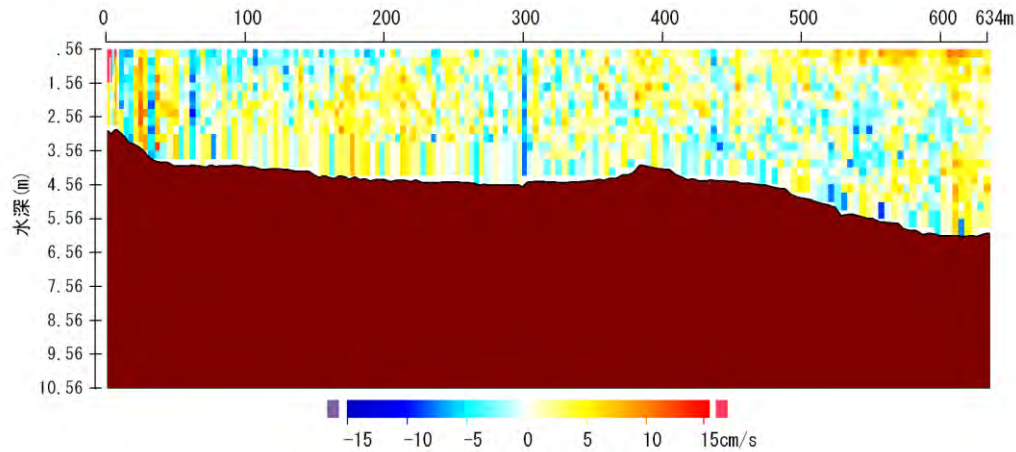
# North Component Velocity (Line 1)



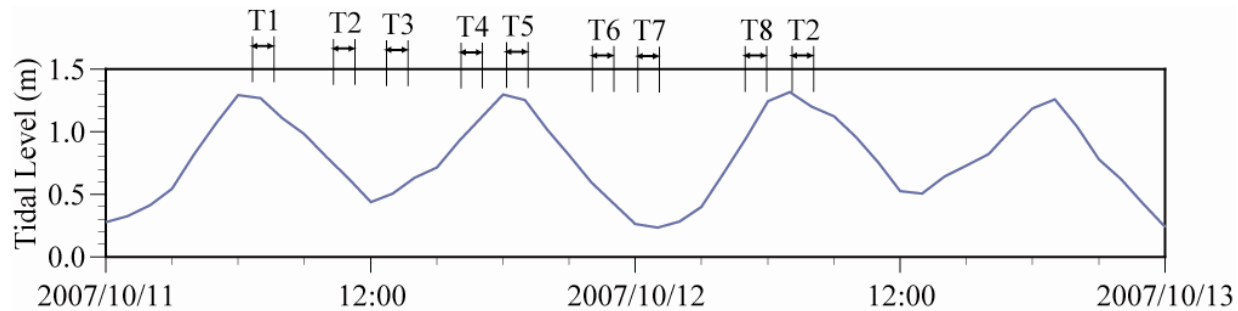
**T3**



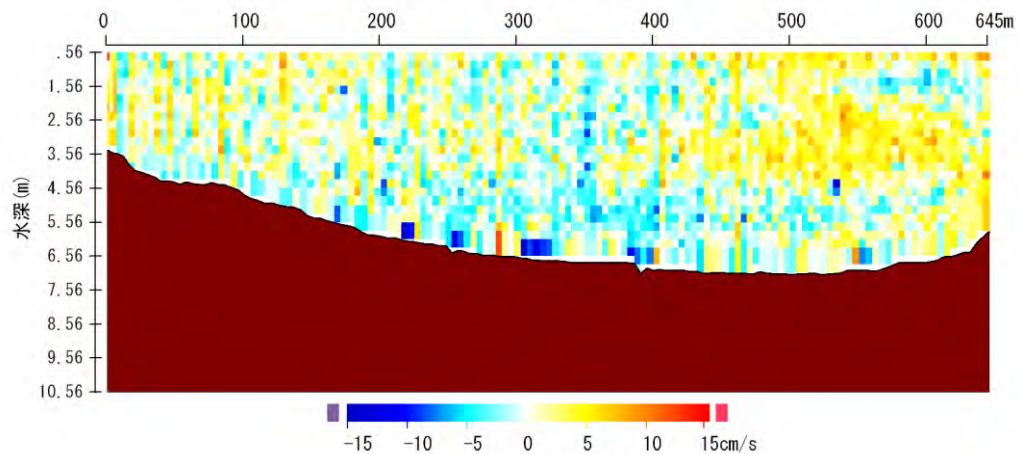
**T4**



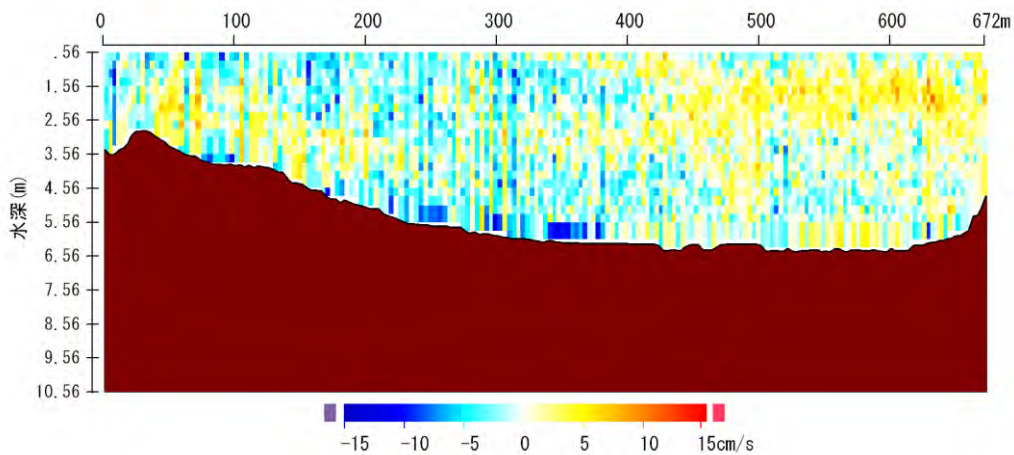
# North Component Velocity (Line 1)



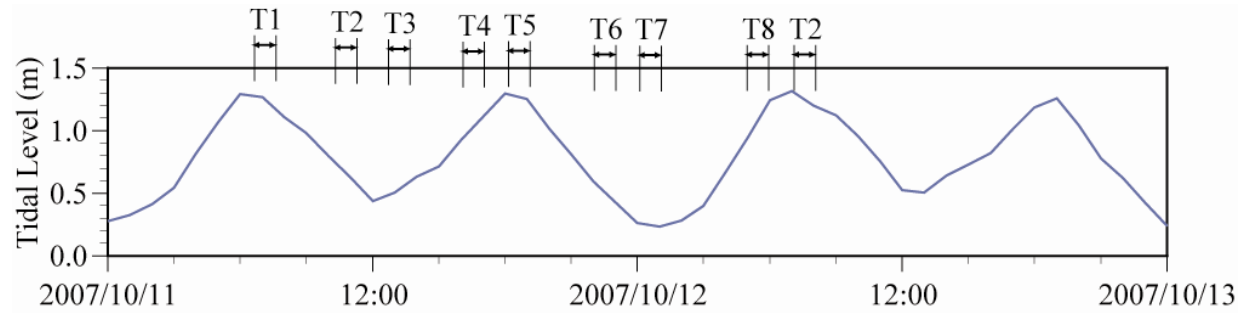
**T5**



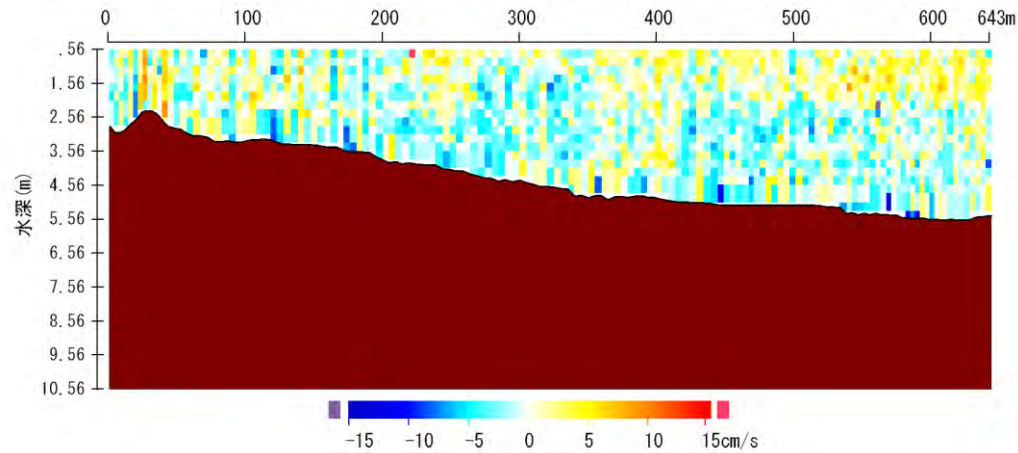
**T6**



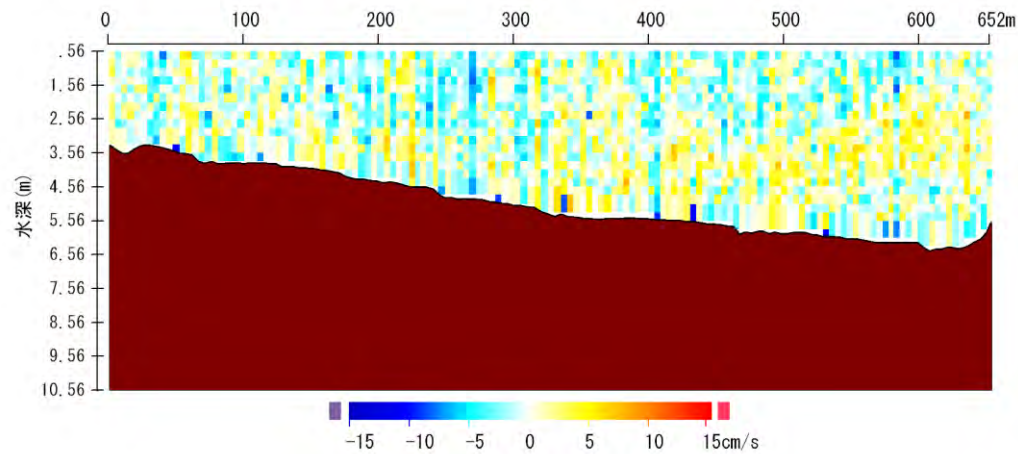
# North Component Velocity (Line 1)



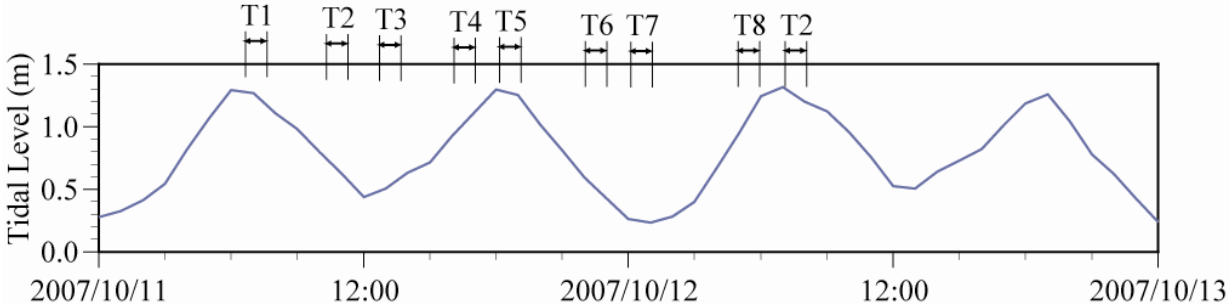
**T7**



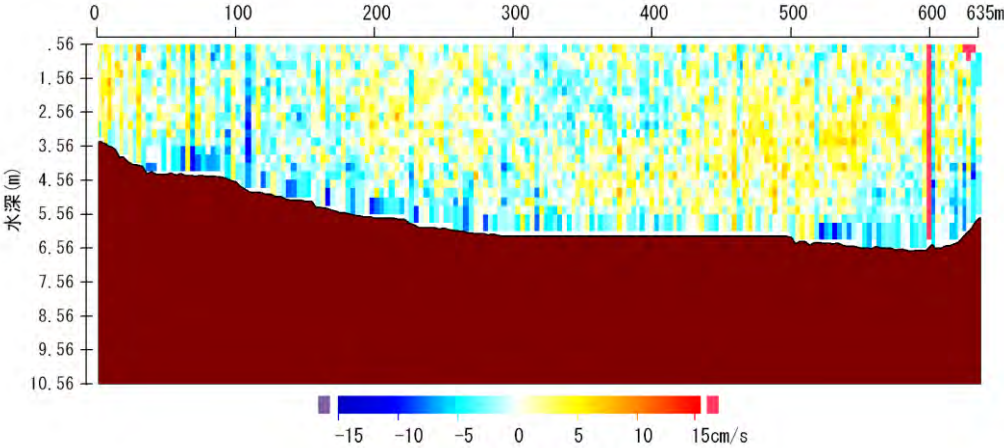
**T8**



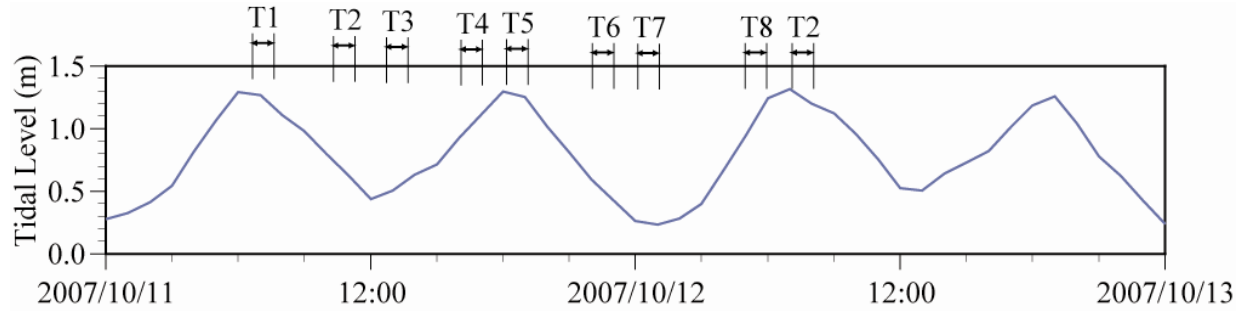
# North Component Velocity (Line 1)



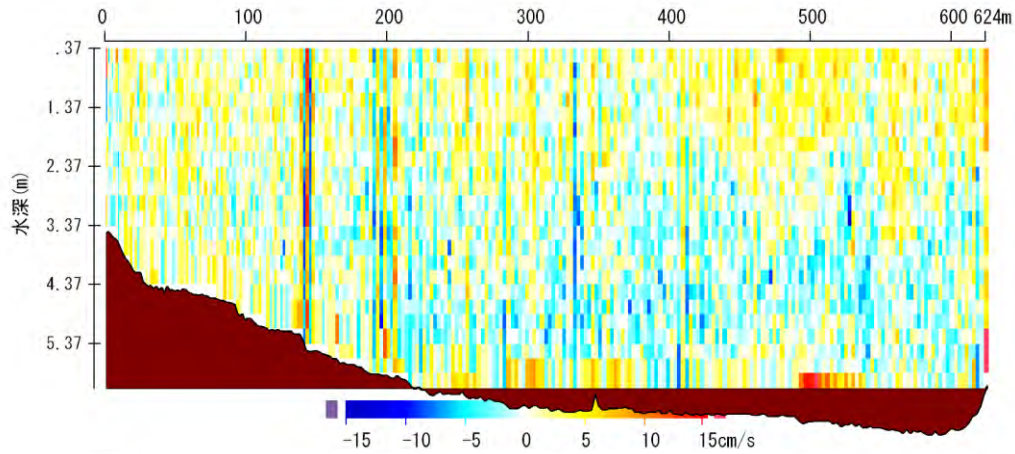
**T9**



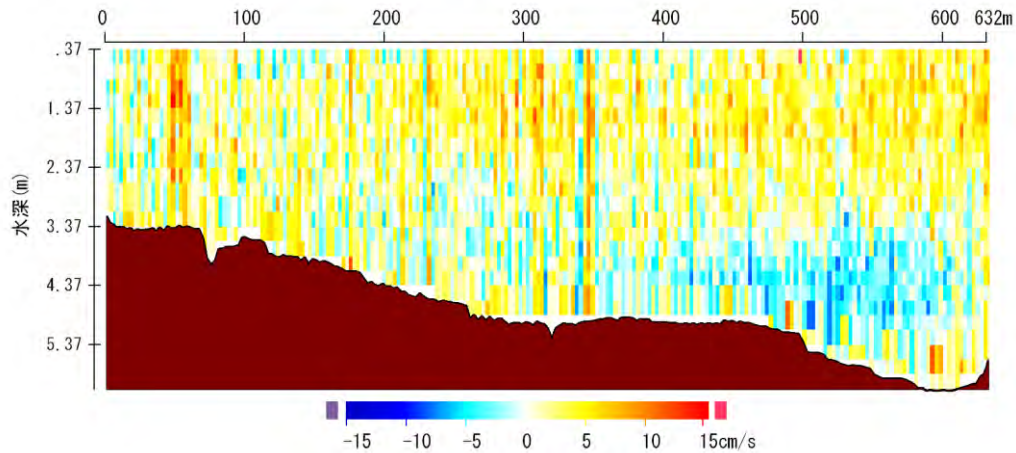
# East Component Velocity (Line 1)



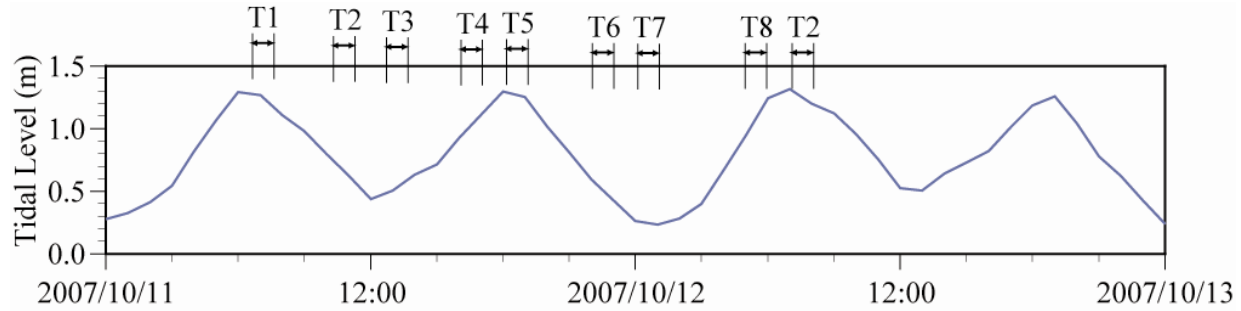
**T1**



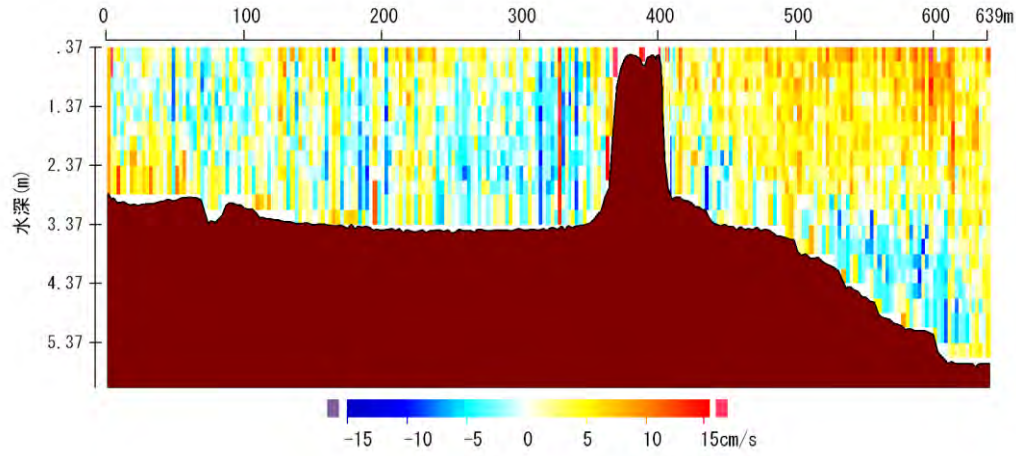
**T2**



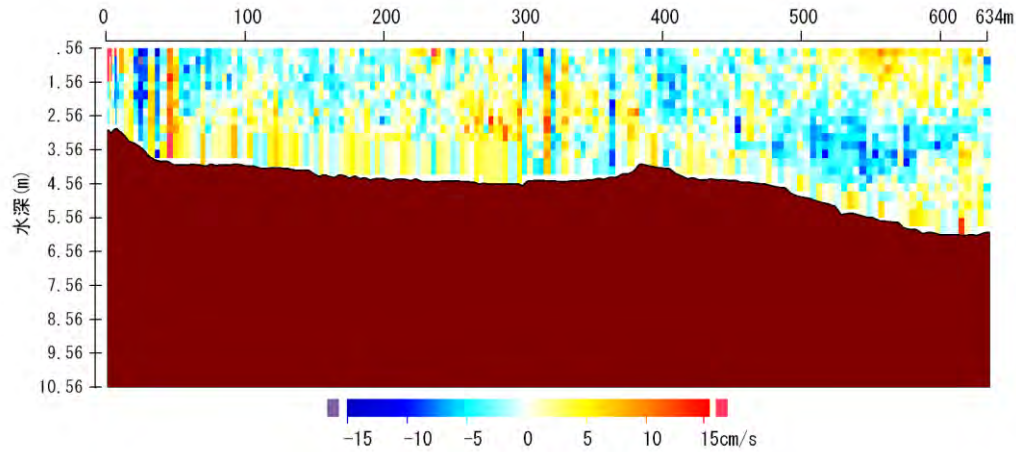
# East Component Velocity (Line 1)



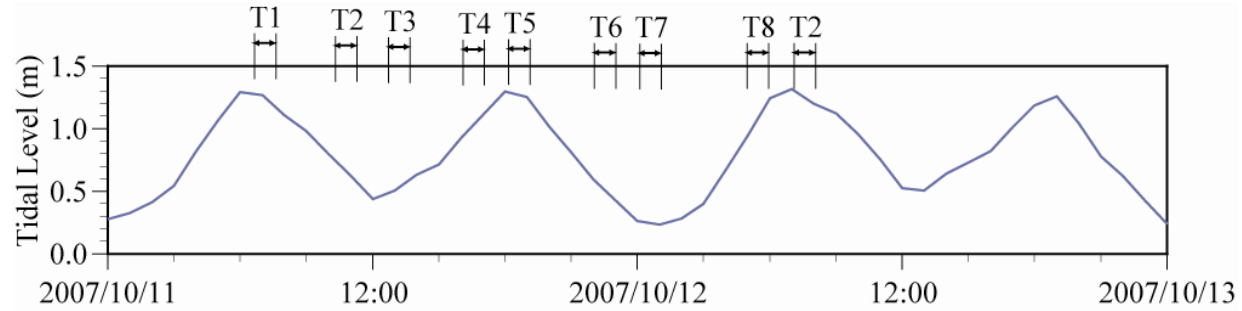
**T3**



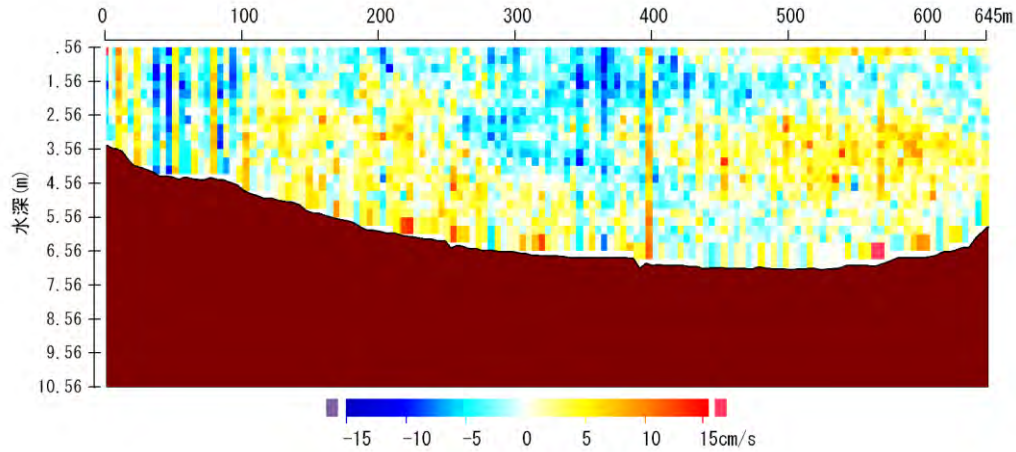
**T4**



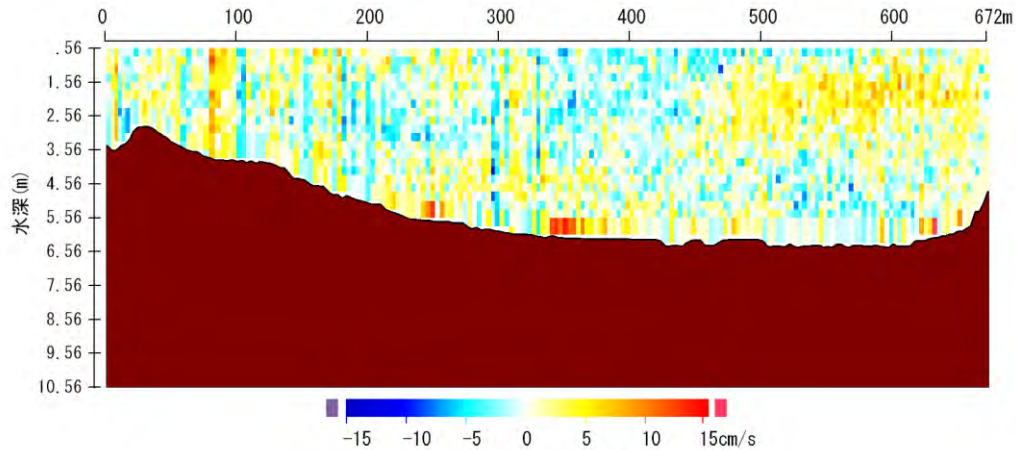
# East Component Velocity (Line 1)



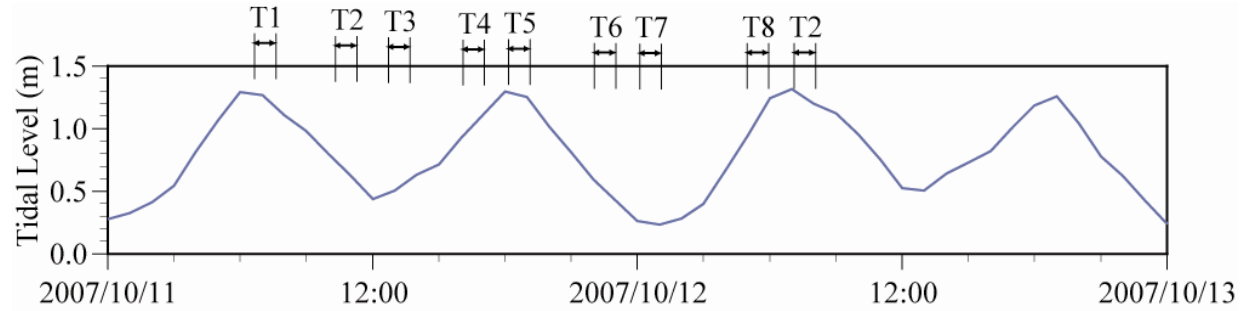
**T5**



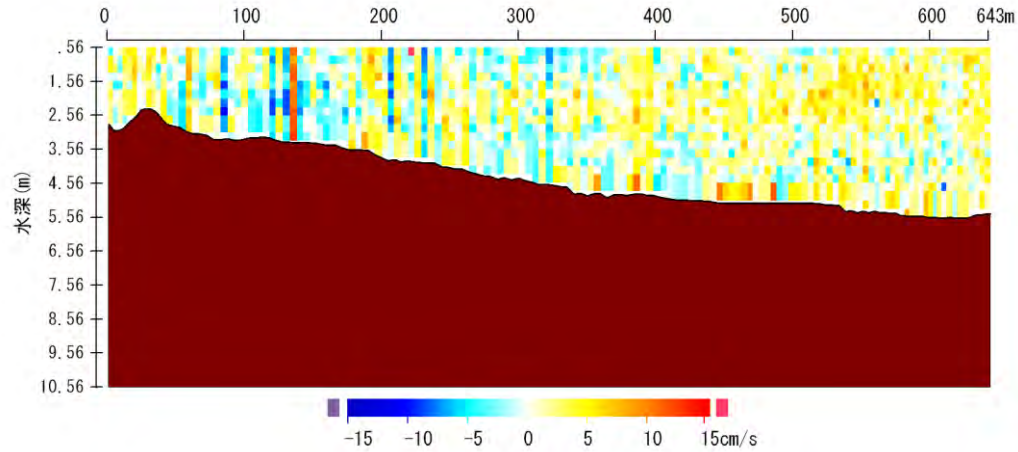
**T6**



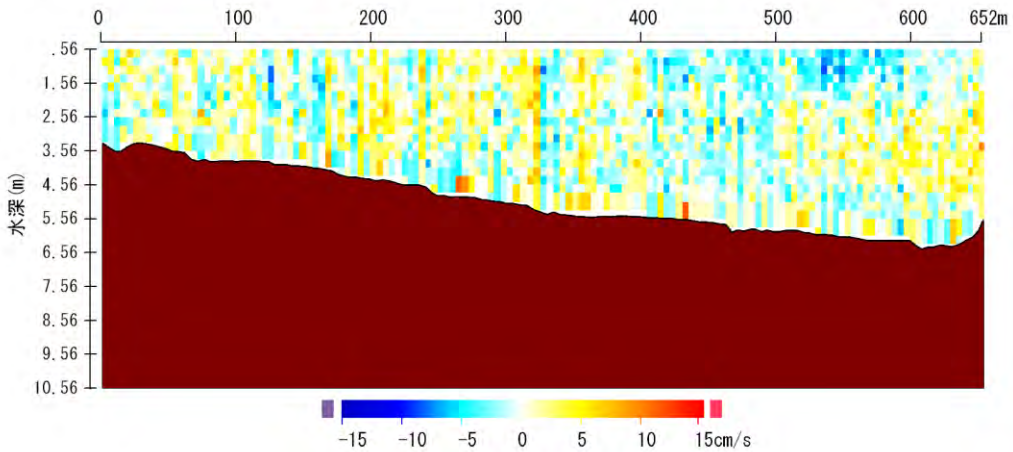
# East Component Velocity (Line 1)



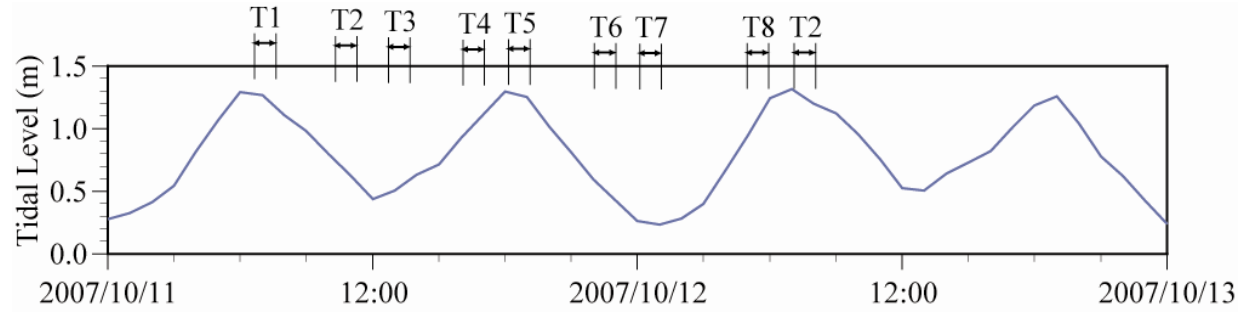
**T7**



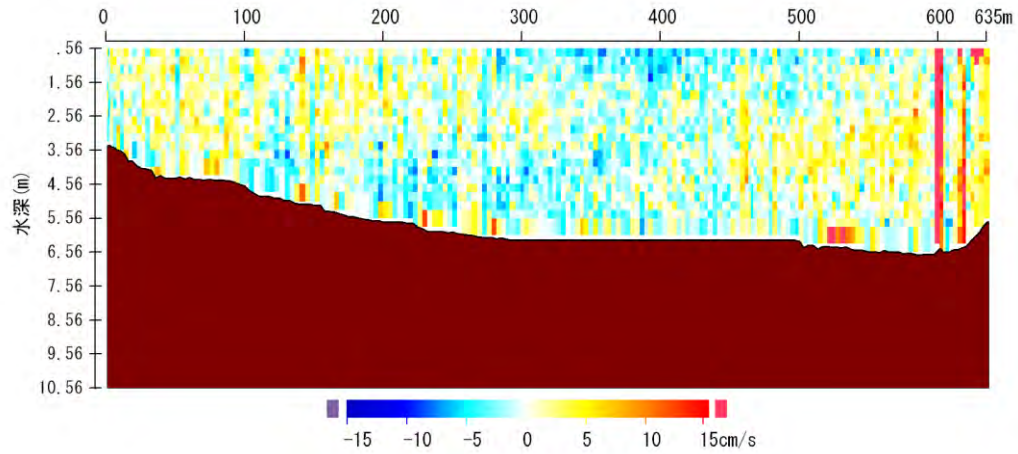
**T8**



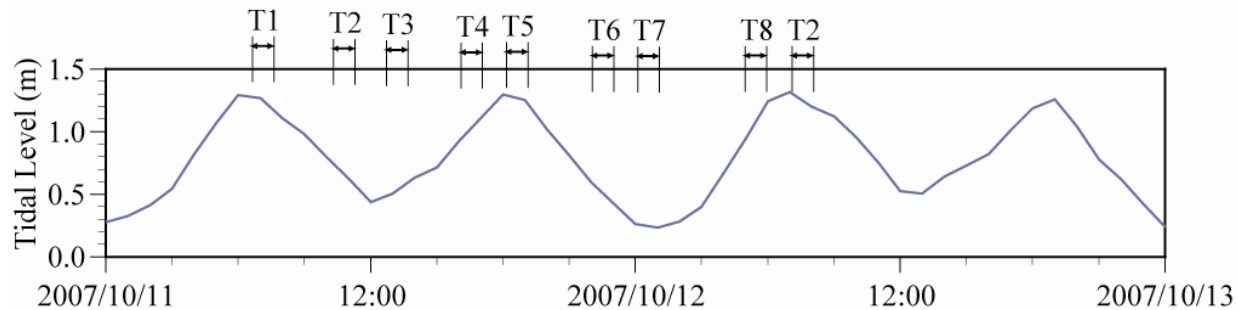
# East Component Velocity (Line 1)



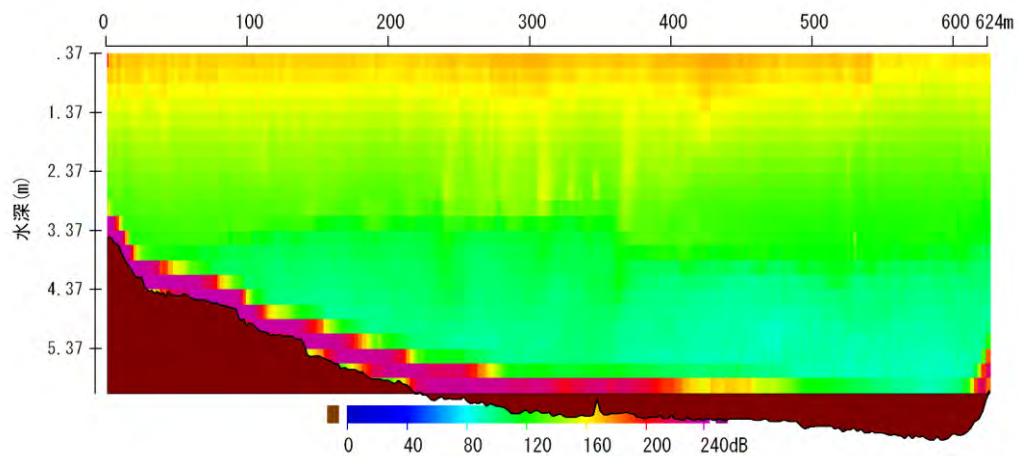
**T9**



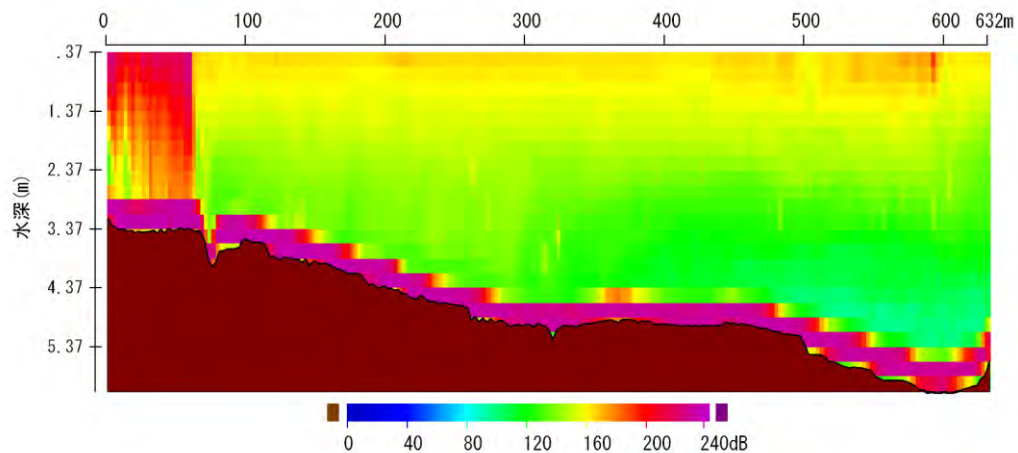
# Intensity (Line 1)



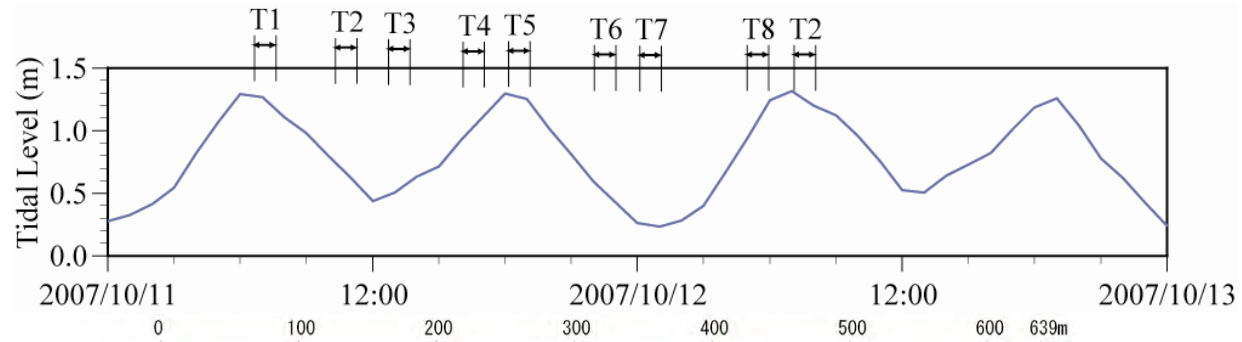
**T1**



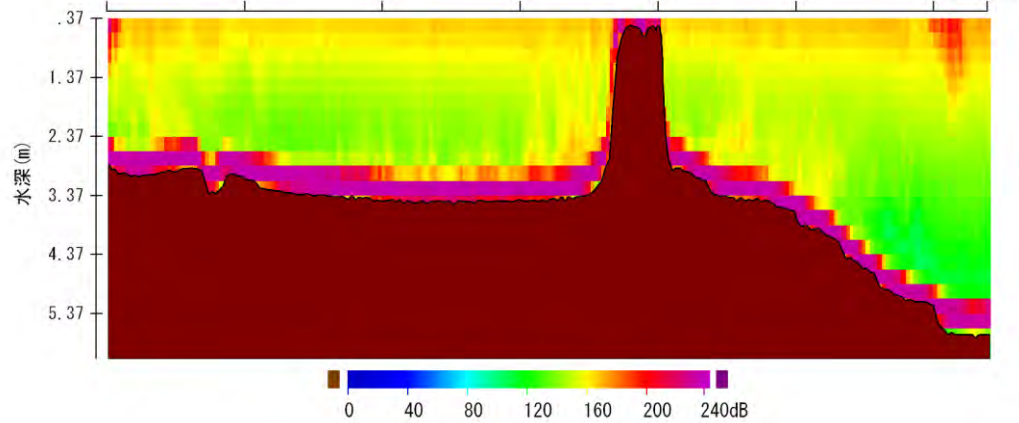
**T2**



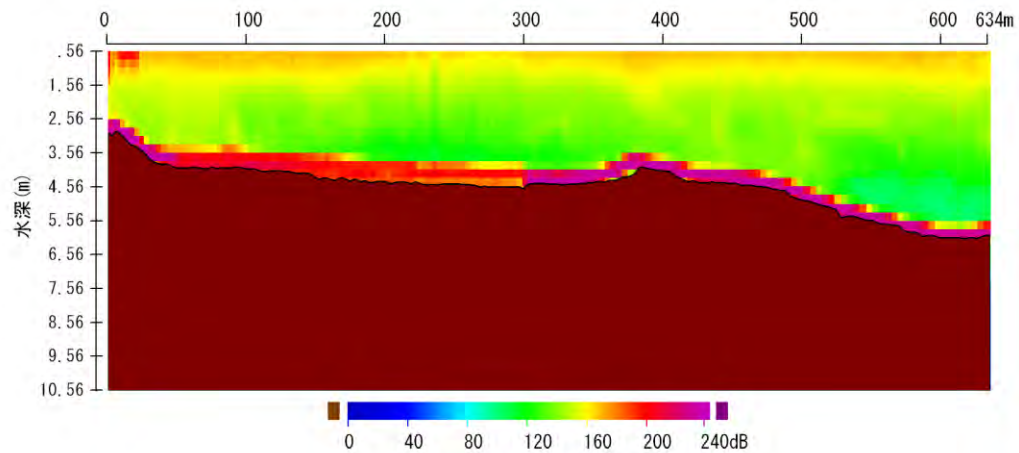
# Intensity (Line 1)



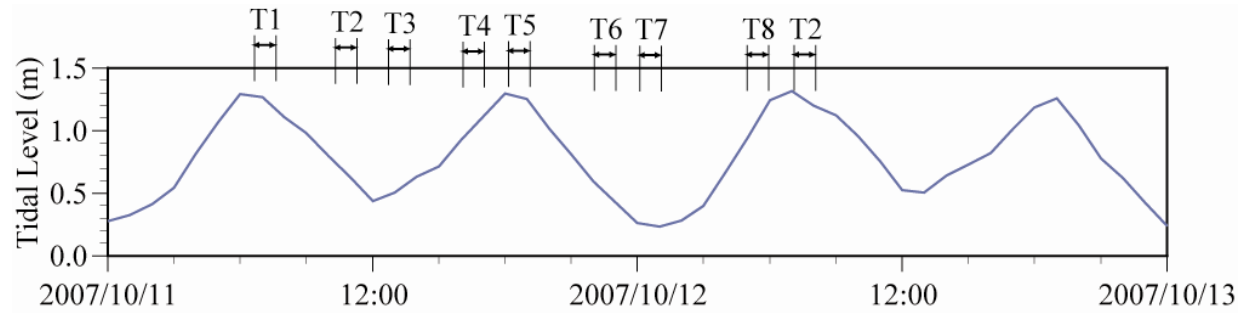
T3



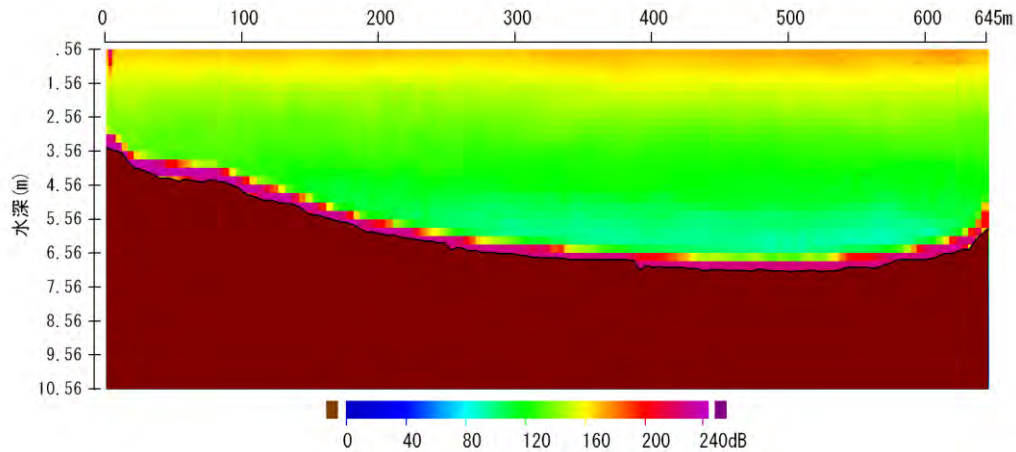
T4



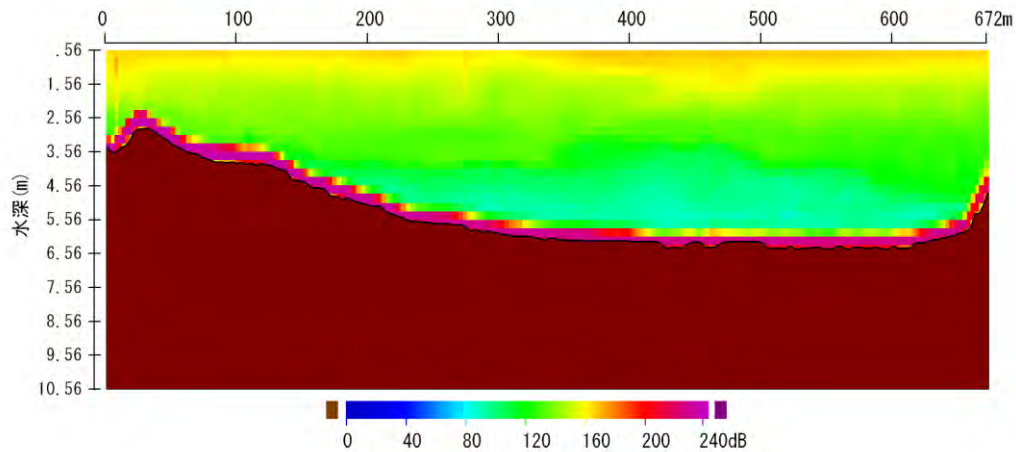
# Intensity (Line 1)



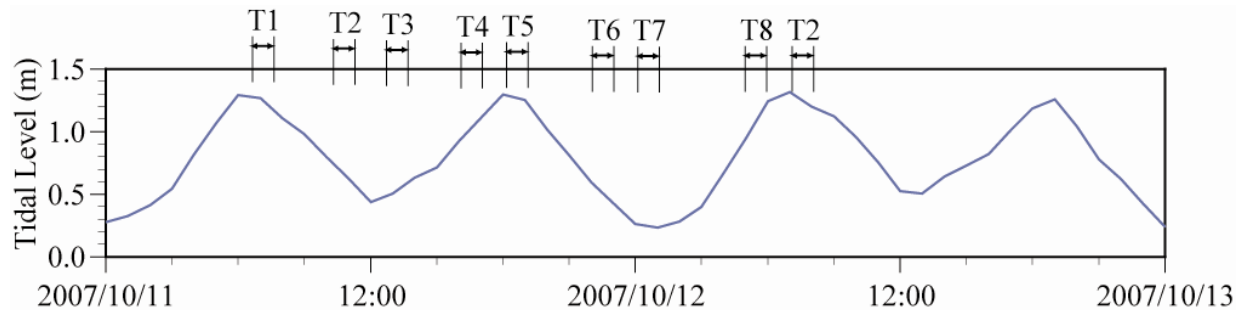
**T5**



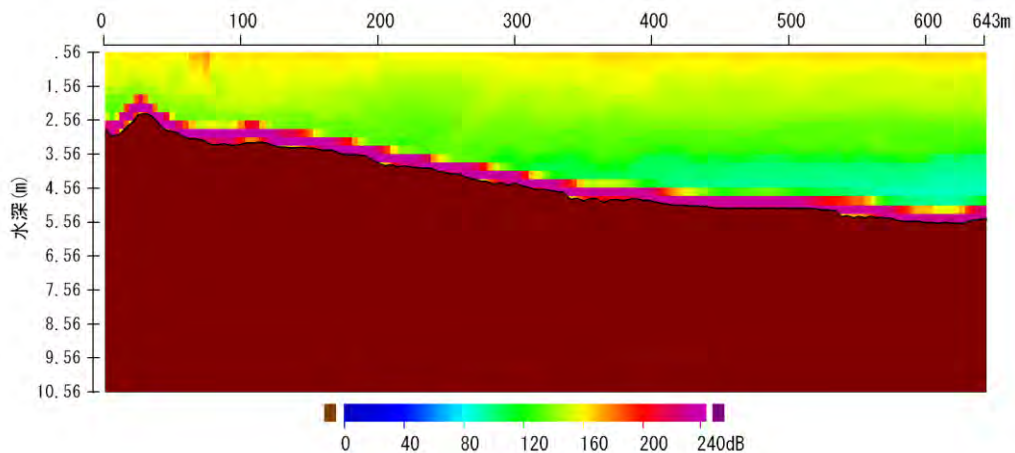
**T6**



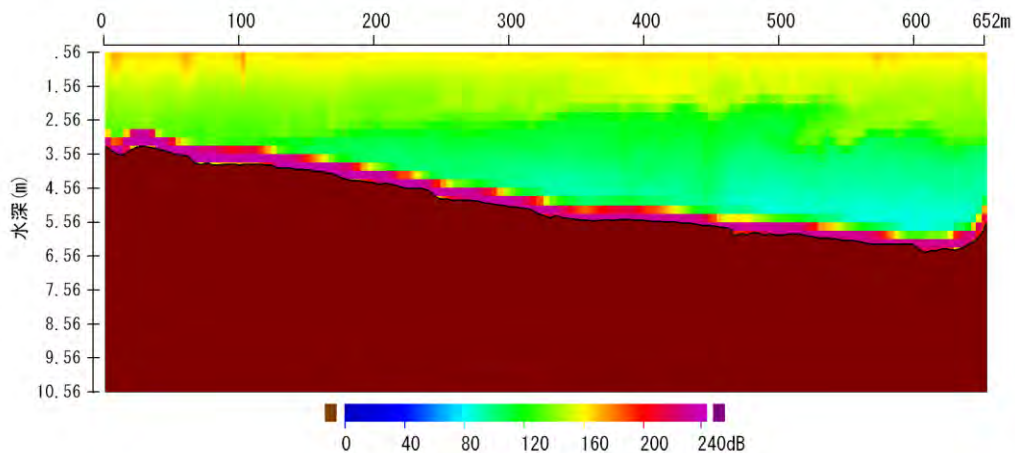
# Intensity (Line 1)



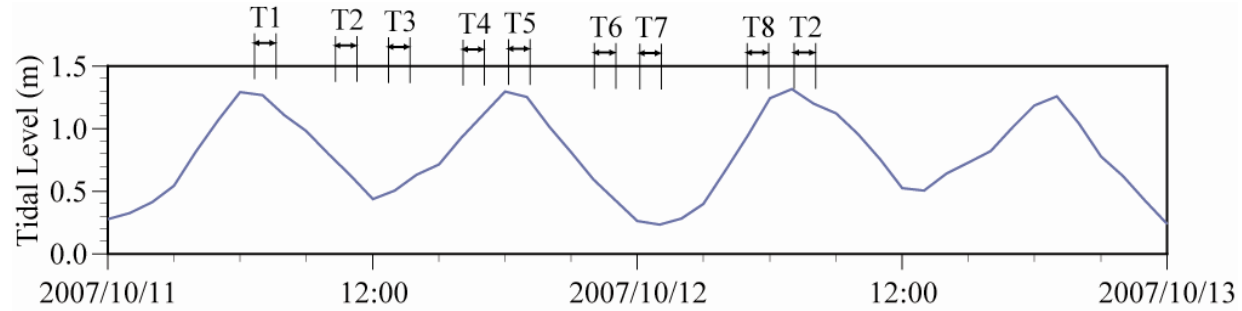
**T7**



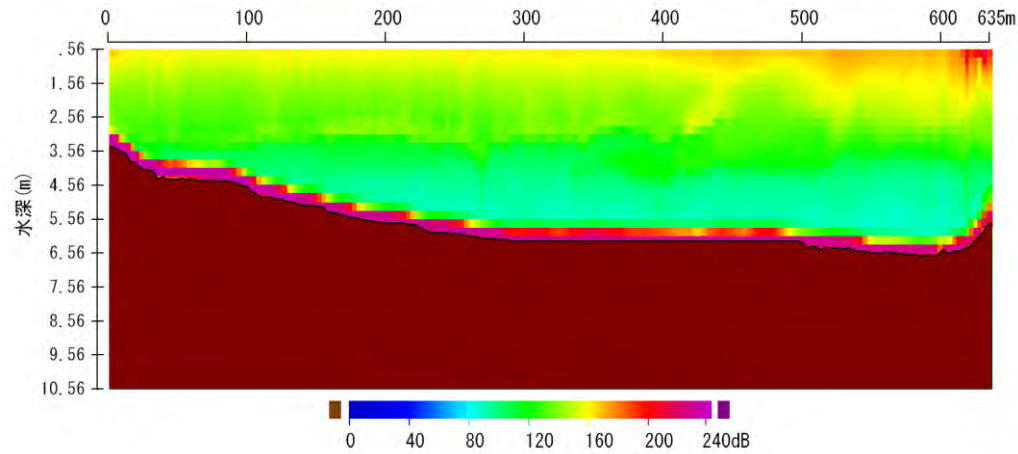
**T8**



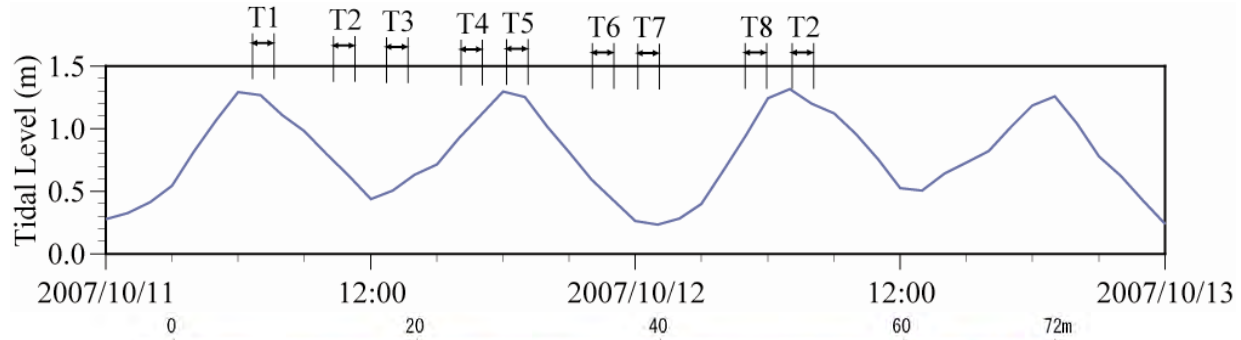
# Intensity (Line 1)



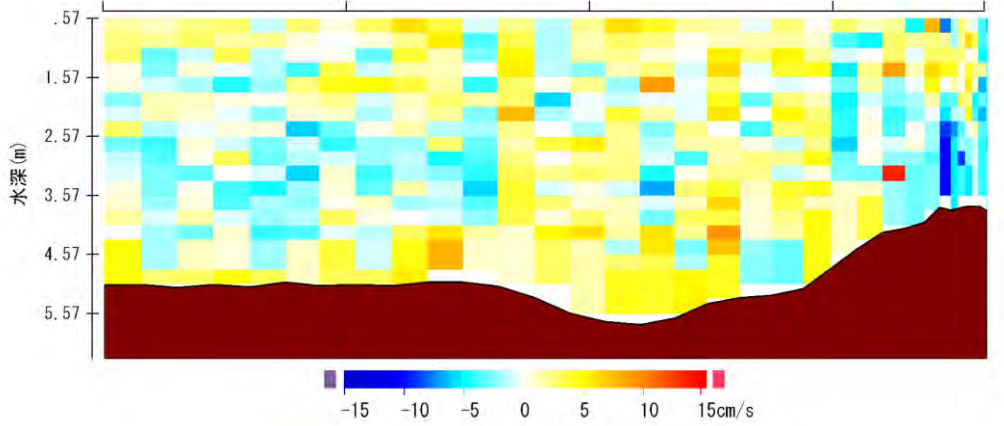
**T9**



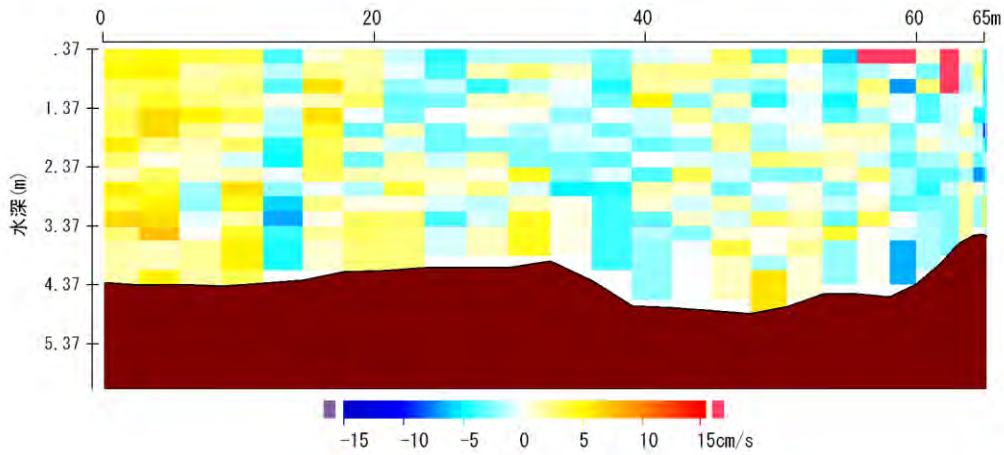
# North Component Velocity (Line 2)



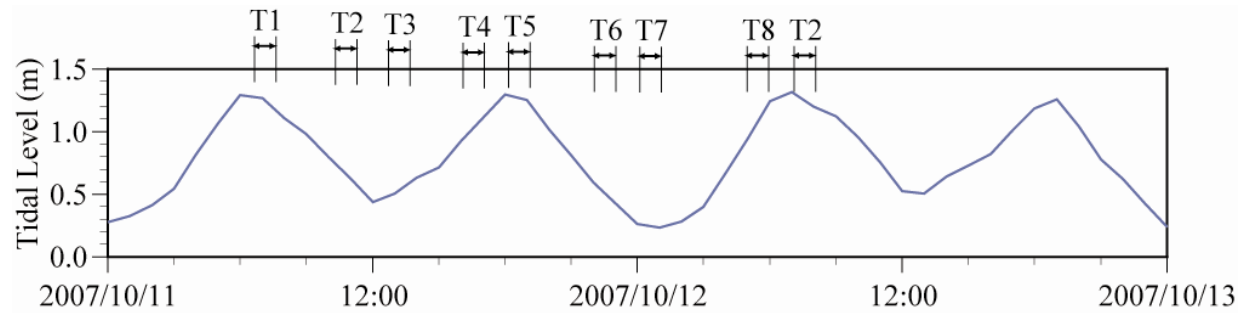
**T1**



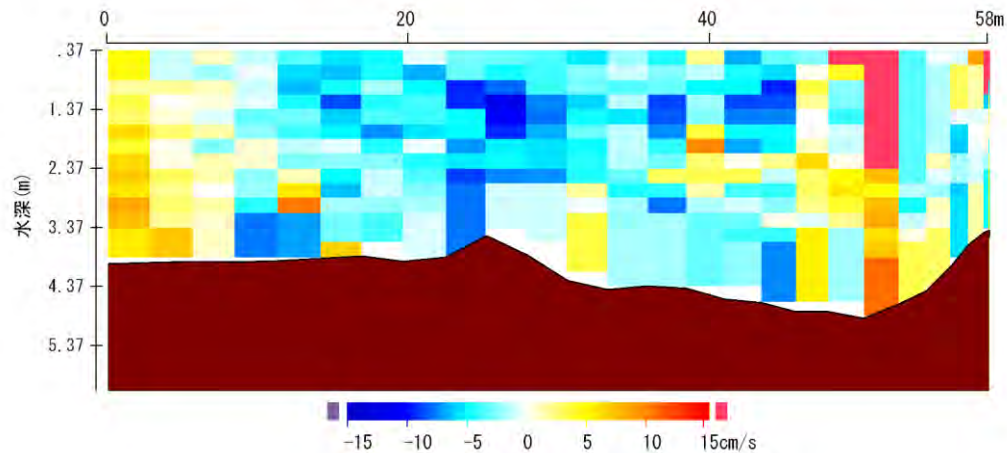
**T2**



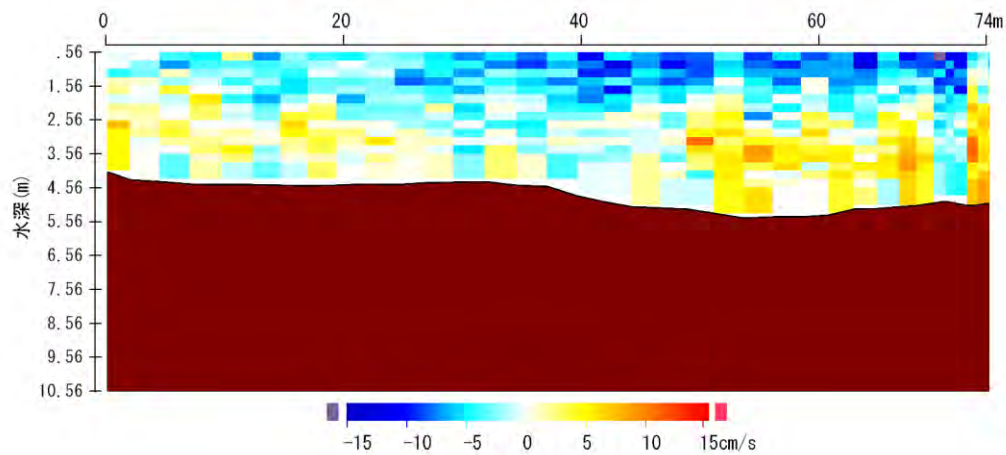
# North Component Velocity (Line 2)



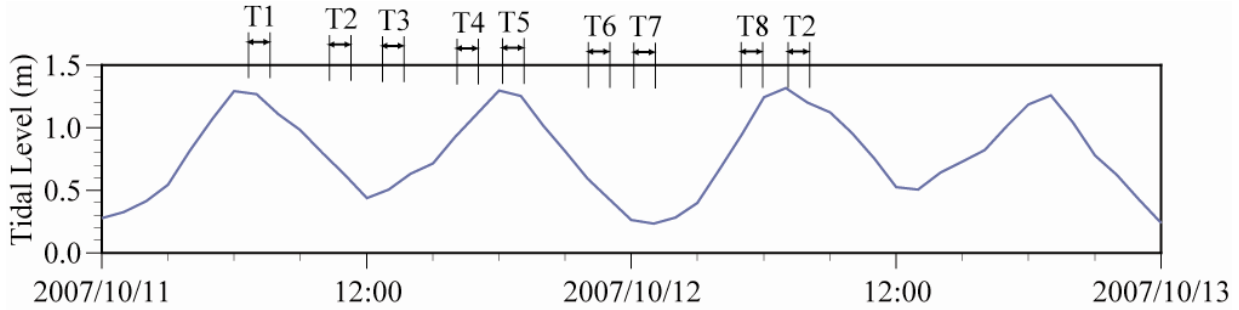
T3



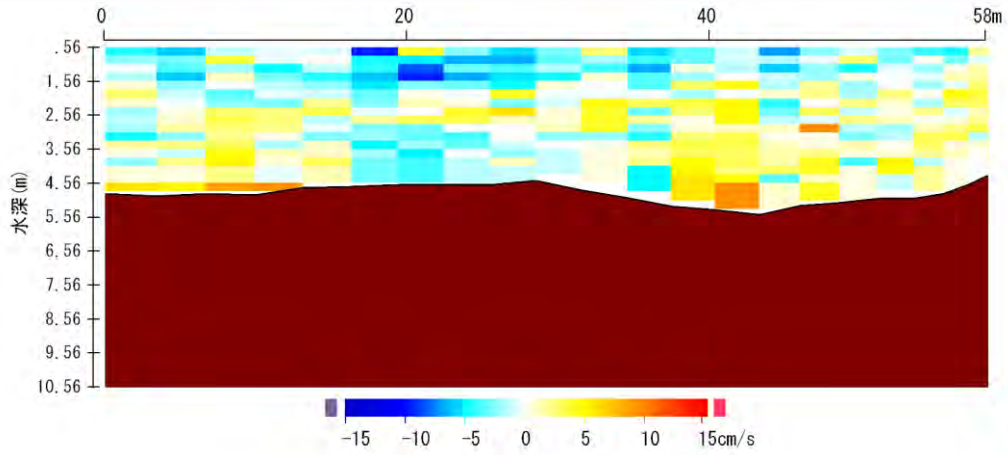
T4



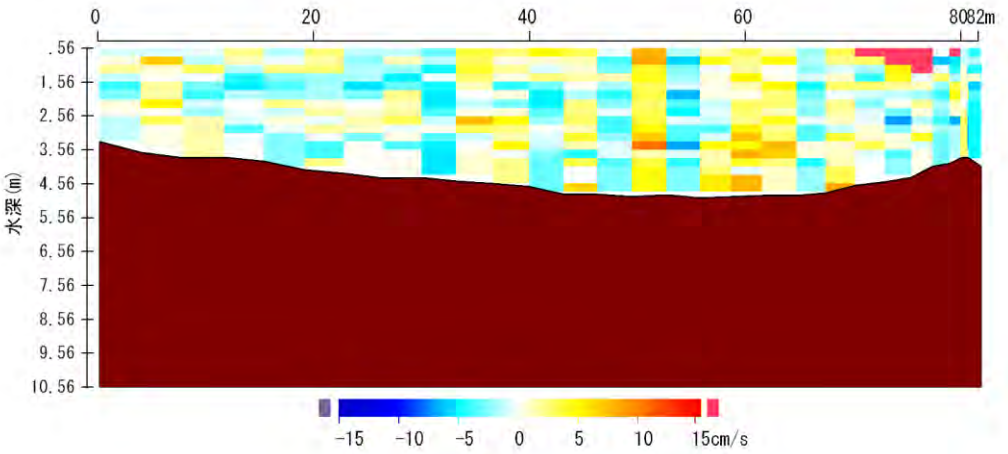
# North Component Velocity (Line 2)



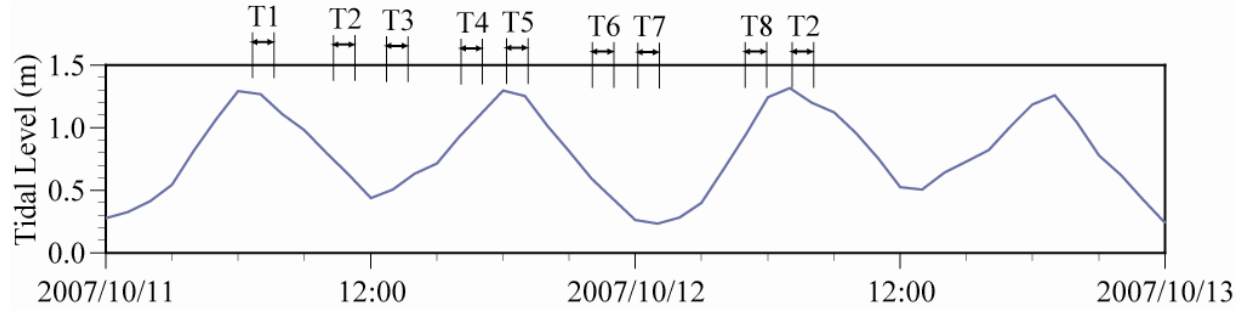
**T5**



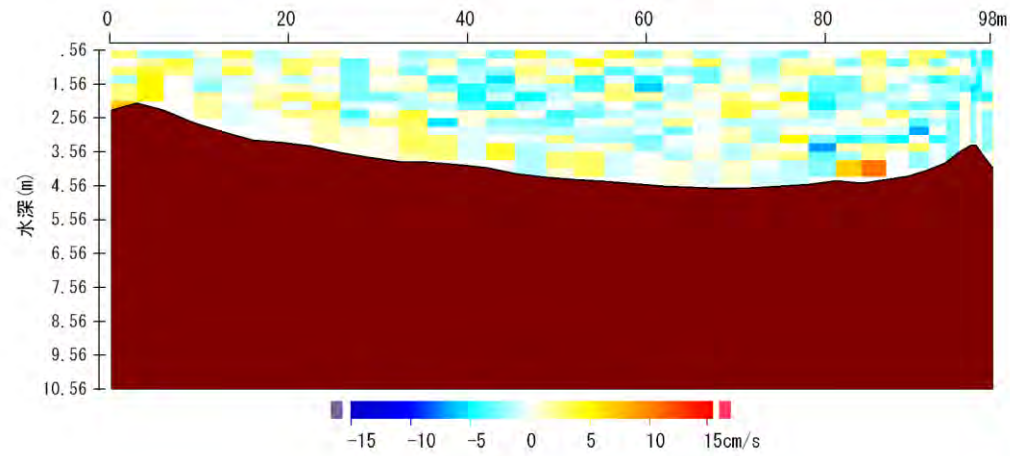
**T6**



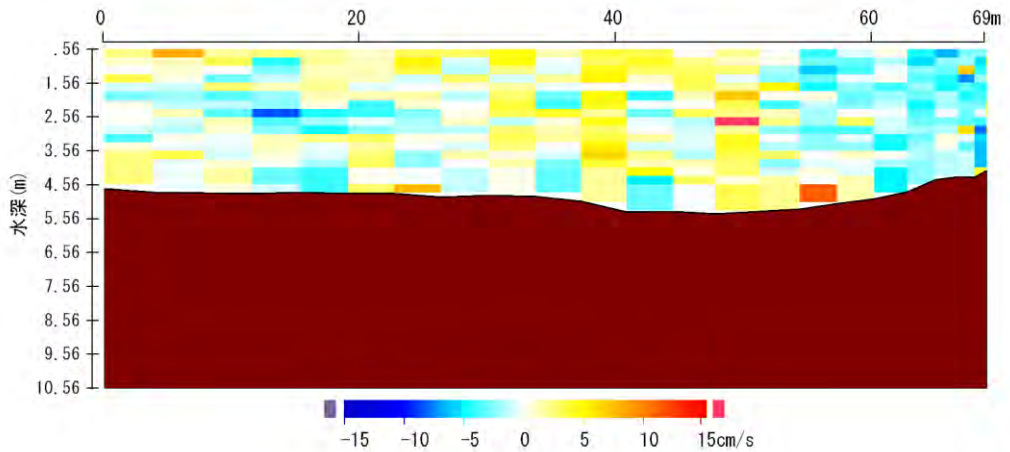
# North Component Velocity (Line 2)



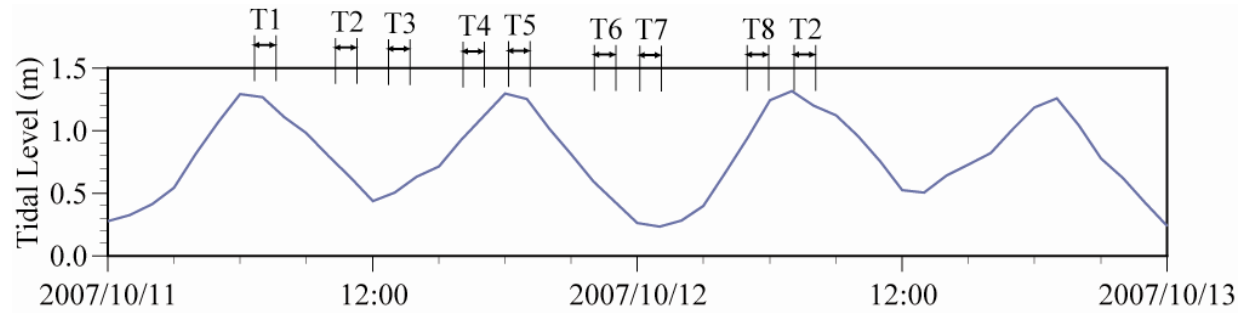
**T7**



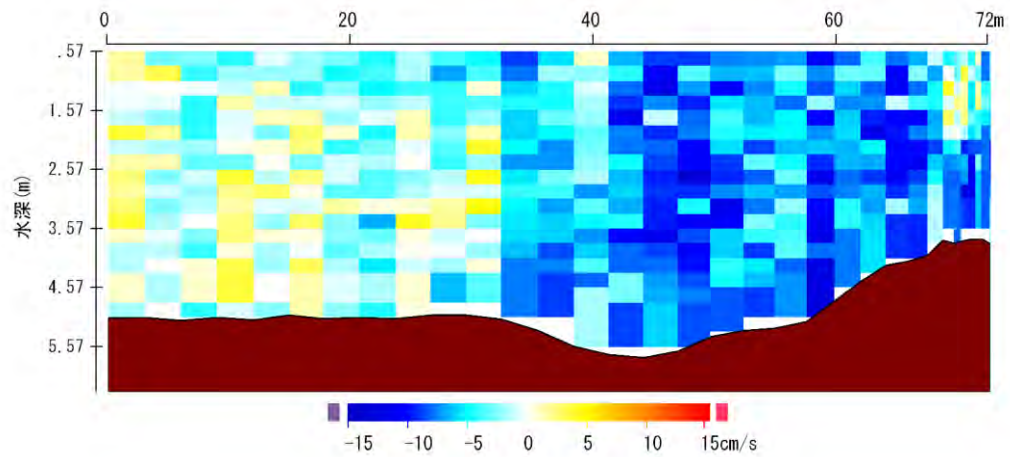
**T9**



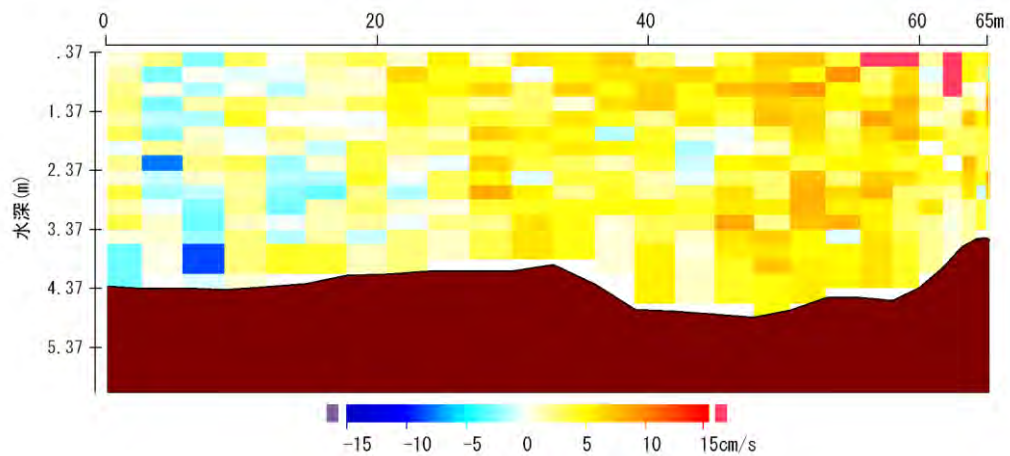
# East Component Velocity (Line 2)



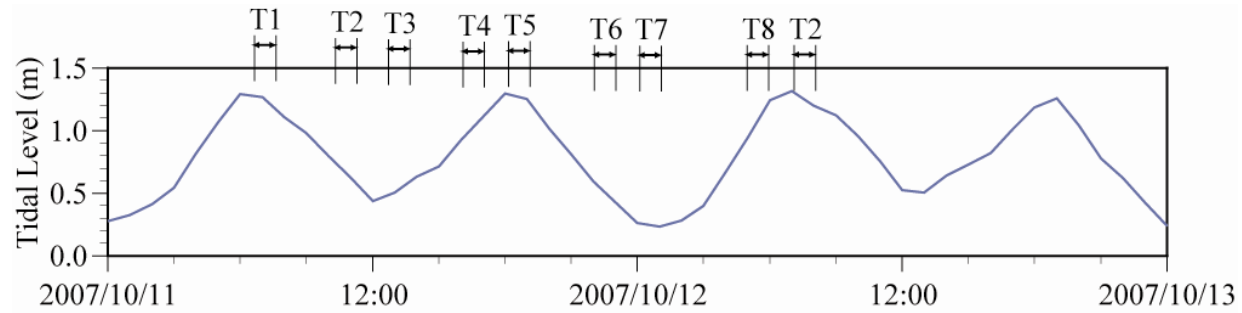
**T1**



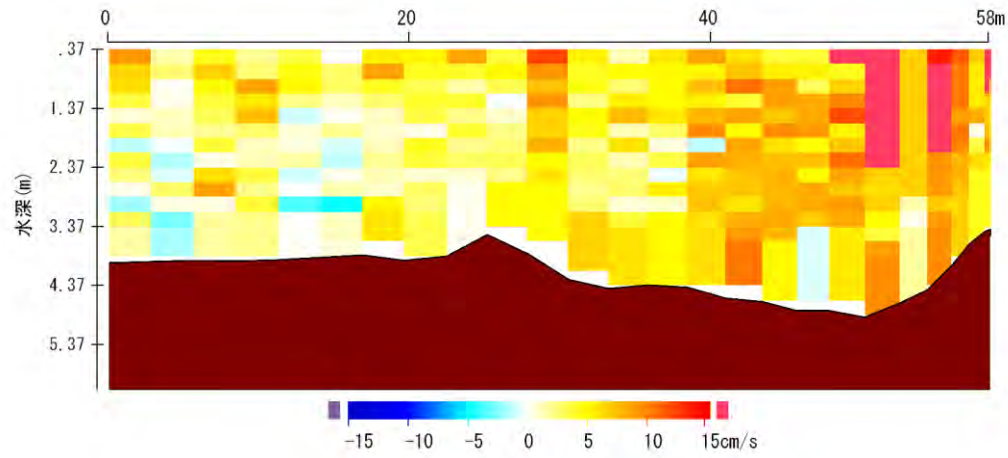
**T2**



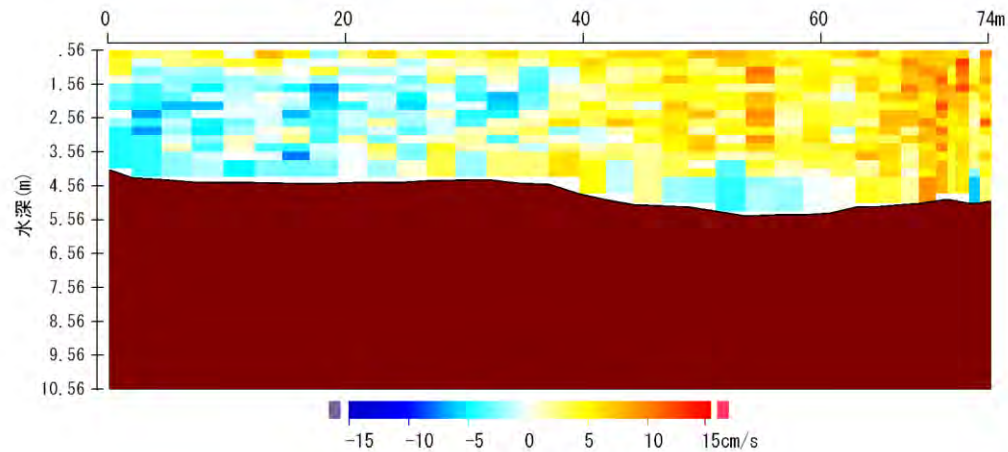
# East Component Velocity (Line 2)



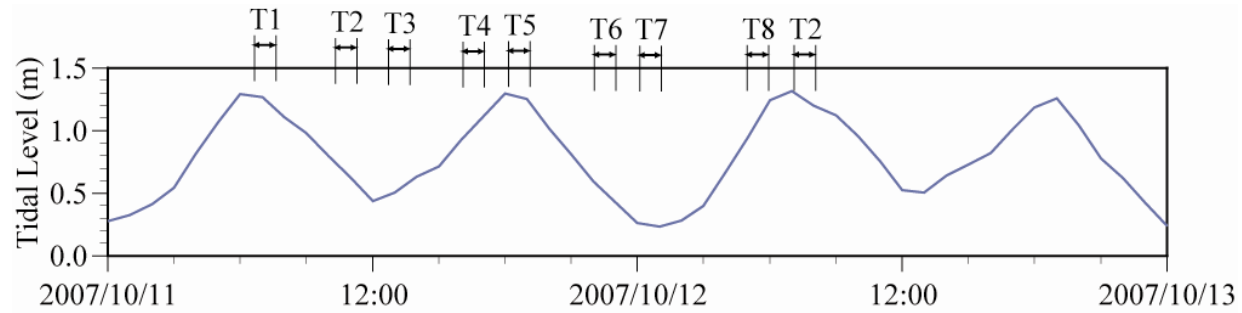
T3



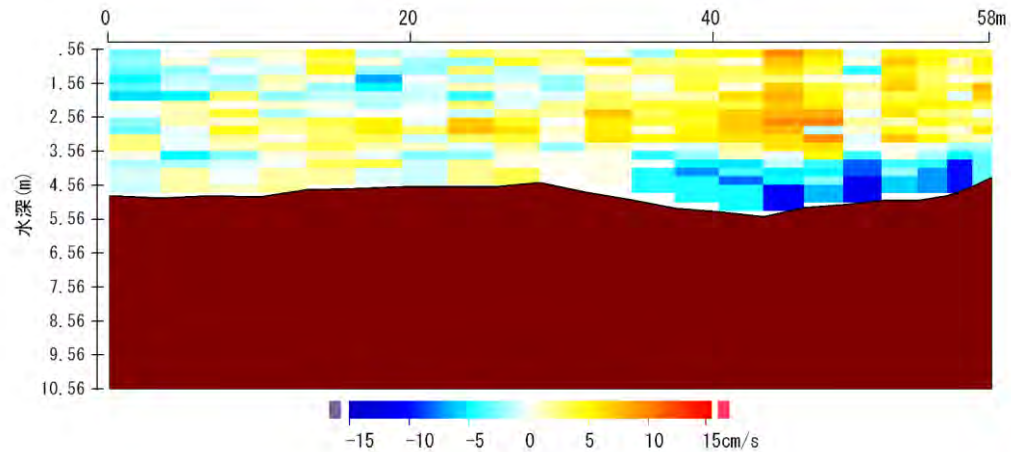
T4



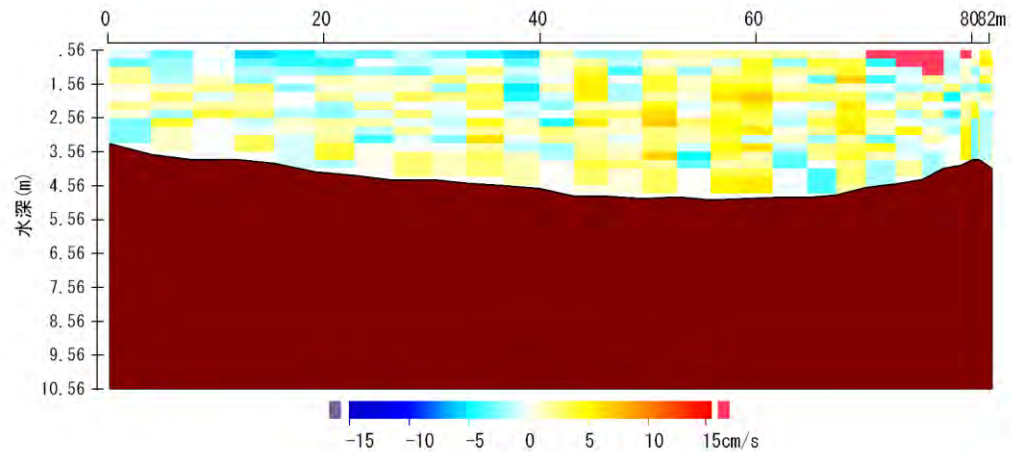
# East Component Velocity (Line 2)



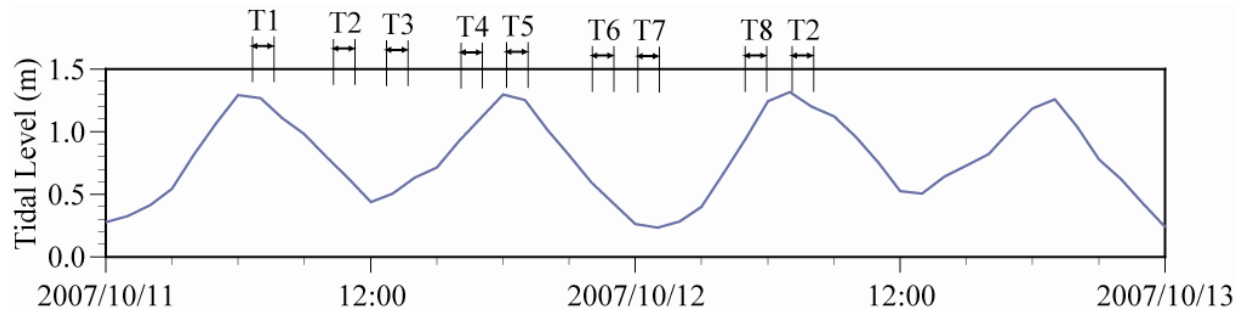
**T5**



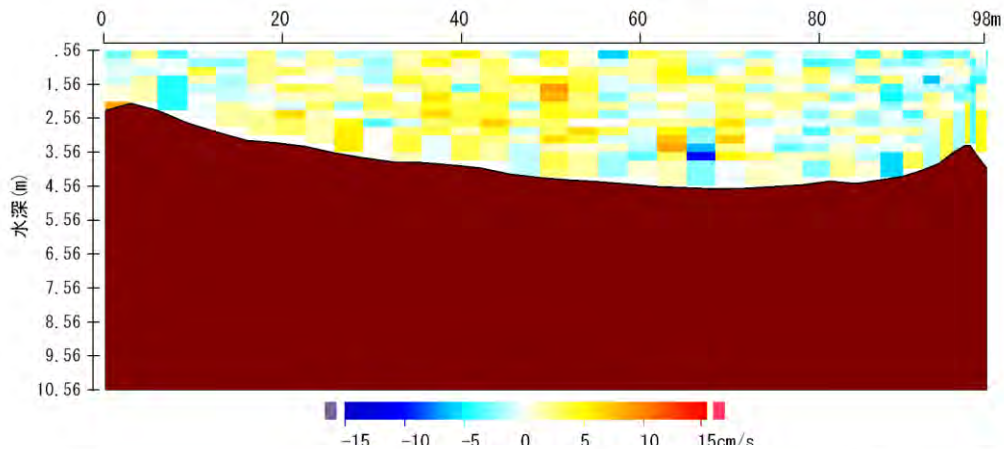
**T6**



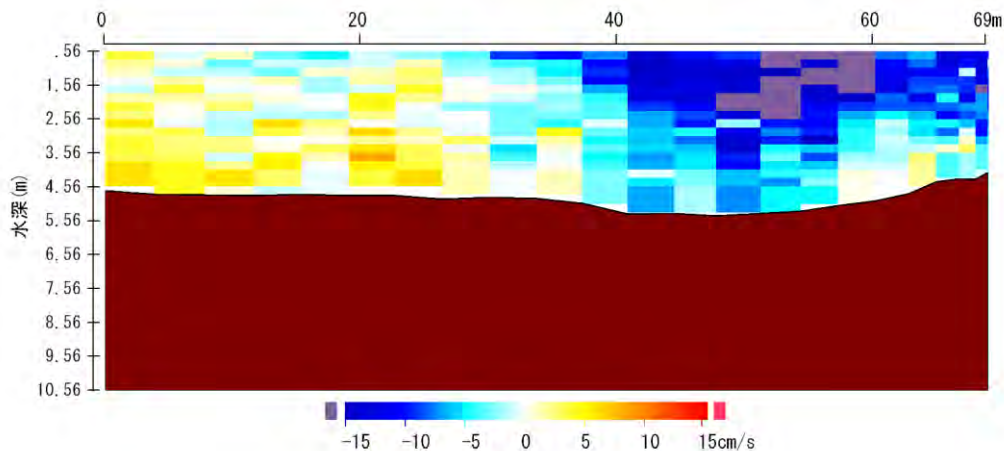
# East Component Velocity (Line 2)



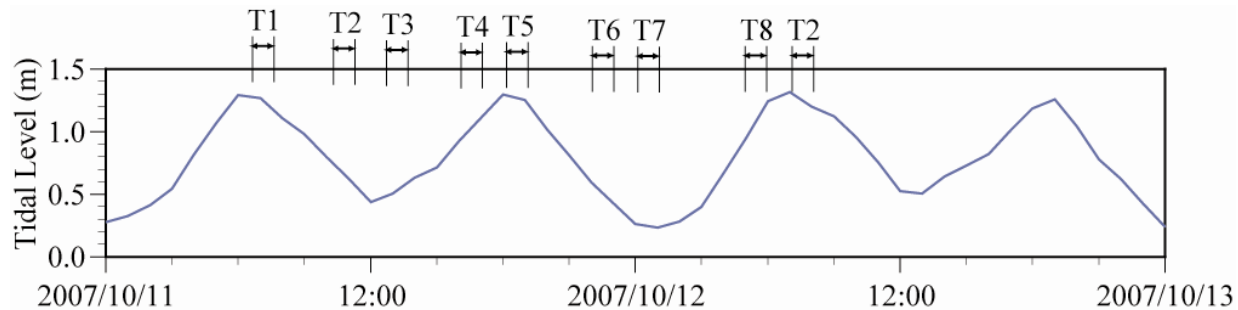
**T7**



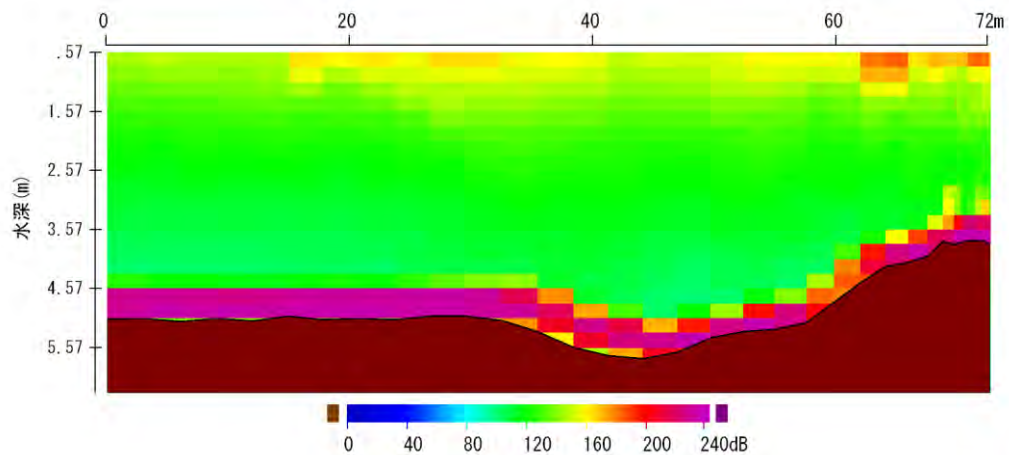
**T9**



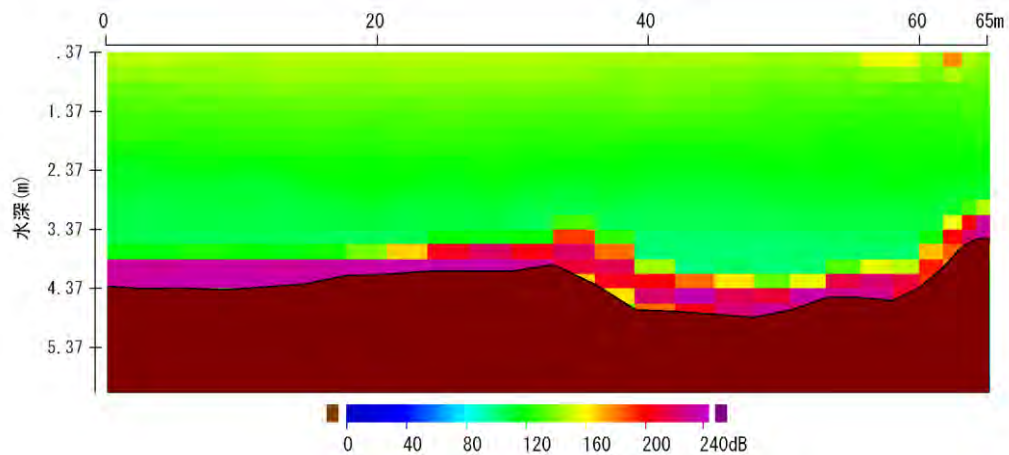
# Intensity (Line 2)



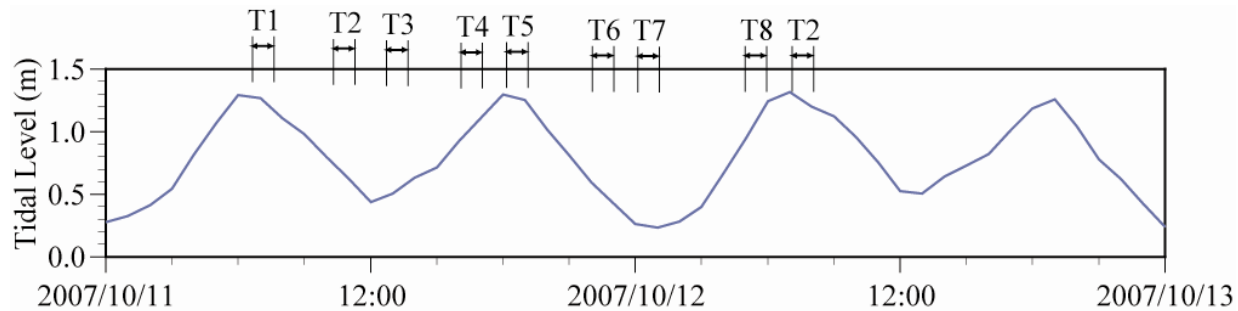
**T1**



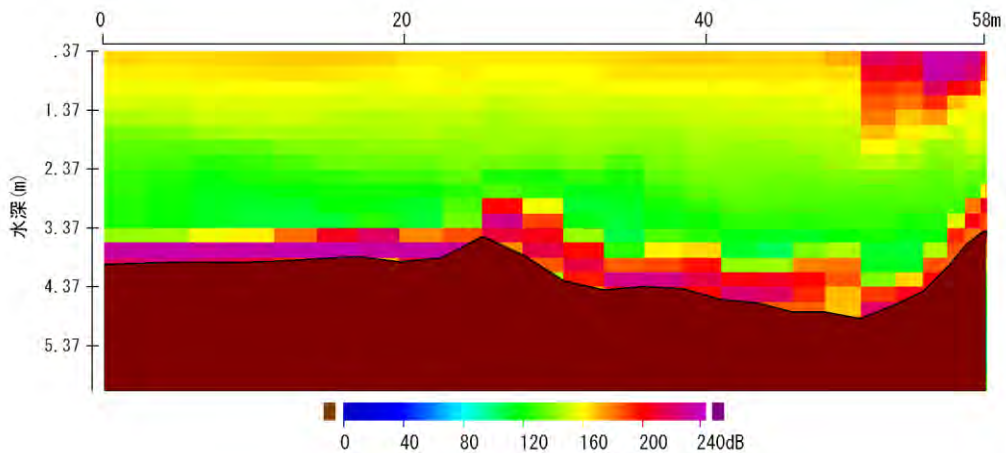
**T2**



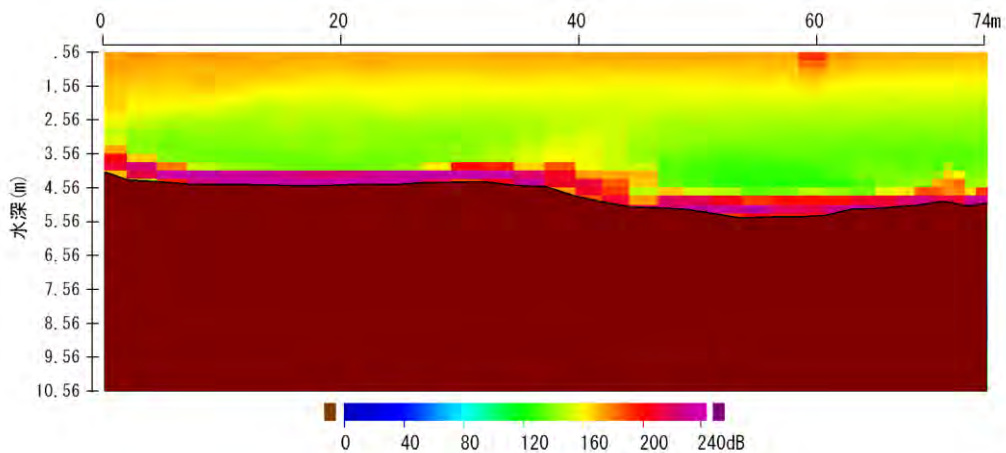
# Intensity (Line 2)



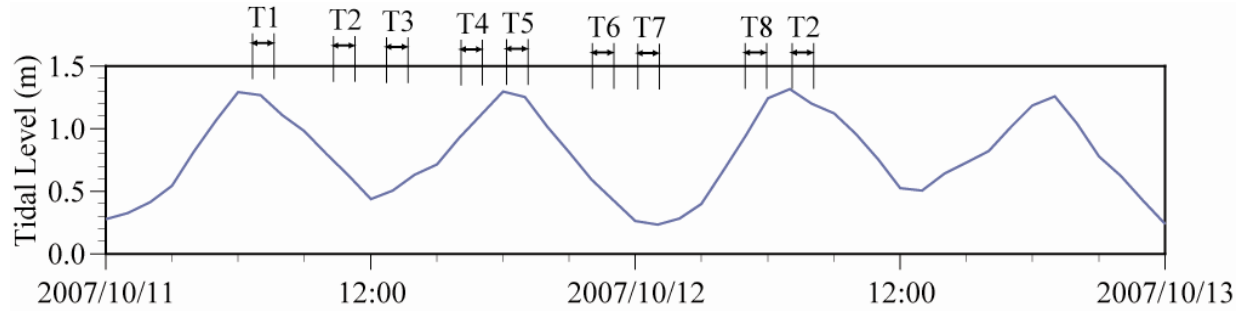
T3



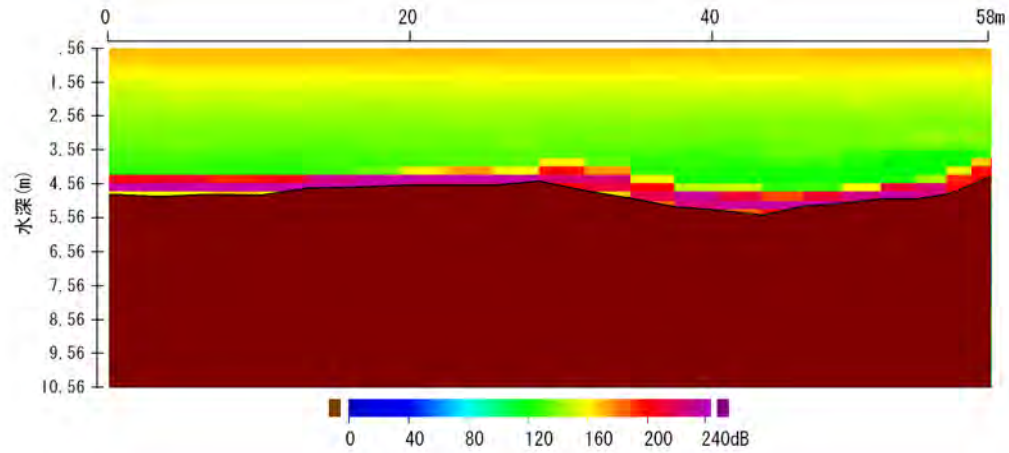
T4



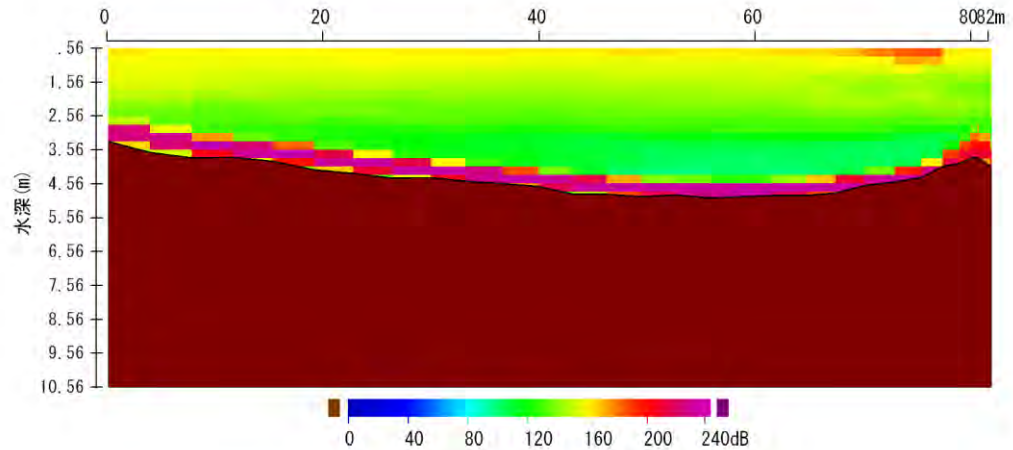
# Intensity (Line 2)



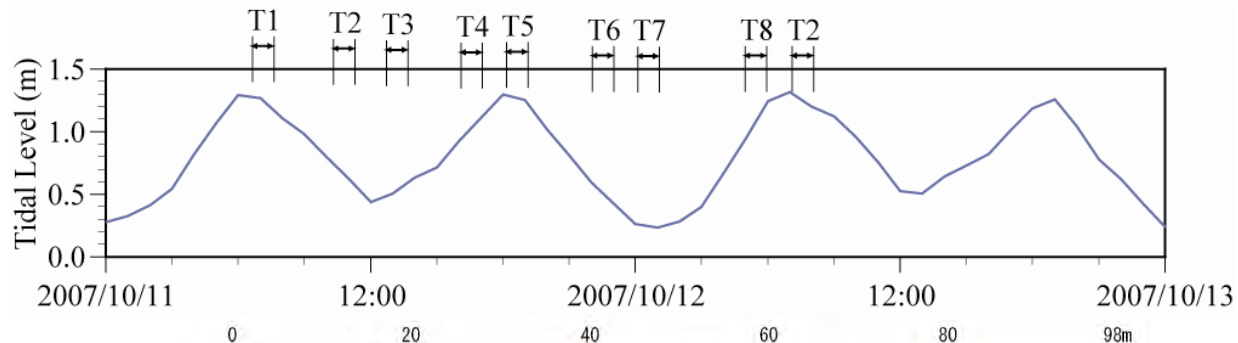
**T5**



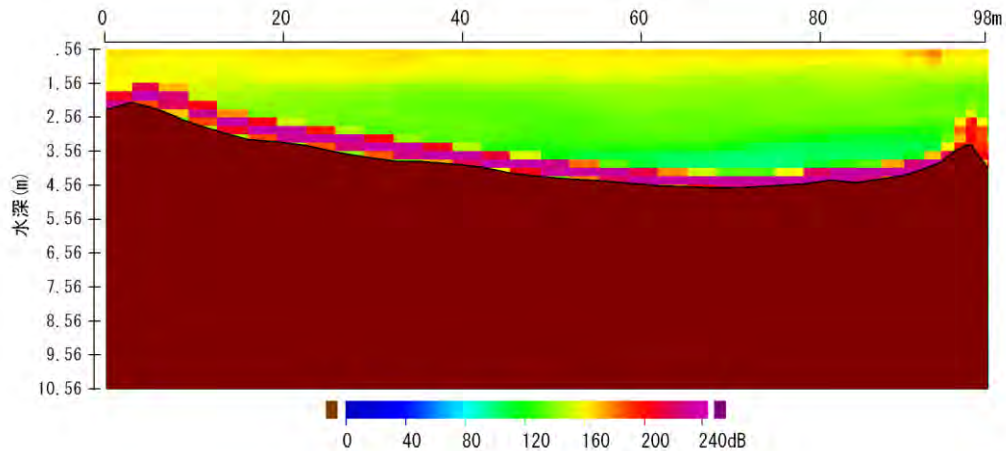
**T6**



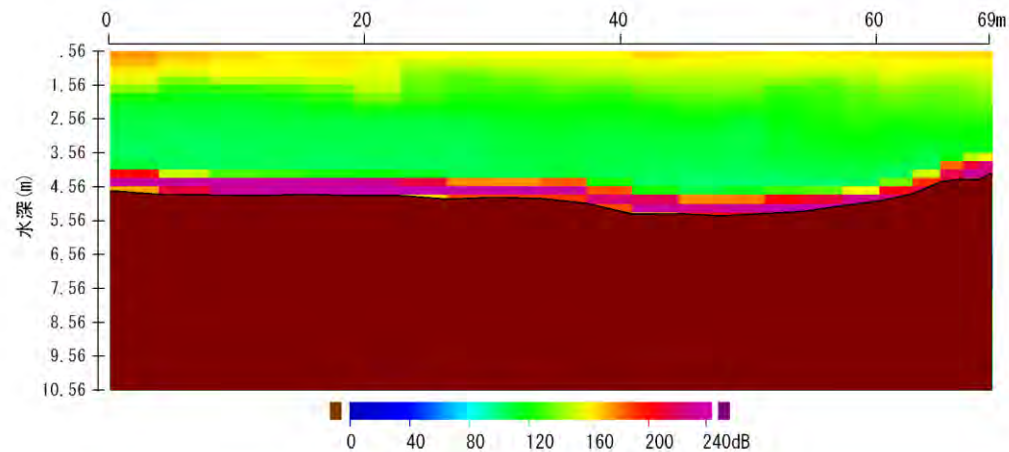
# Intensity (Line 2)

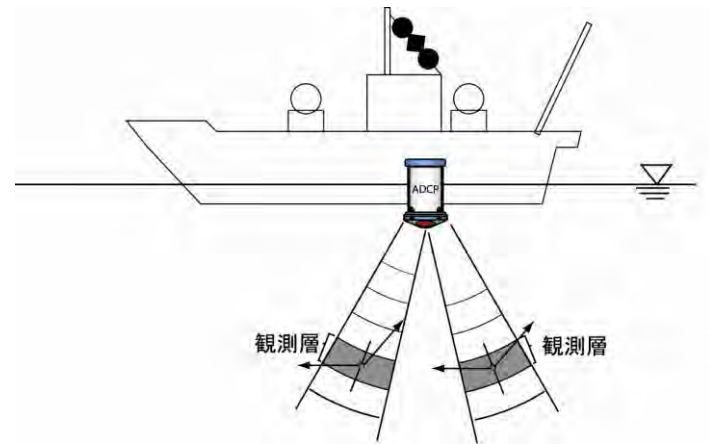


**T7**



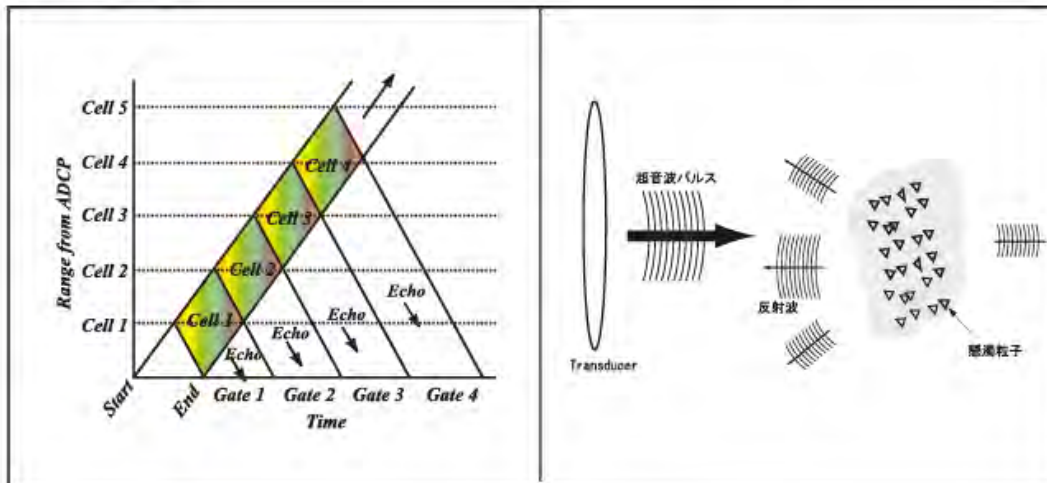
**T9**





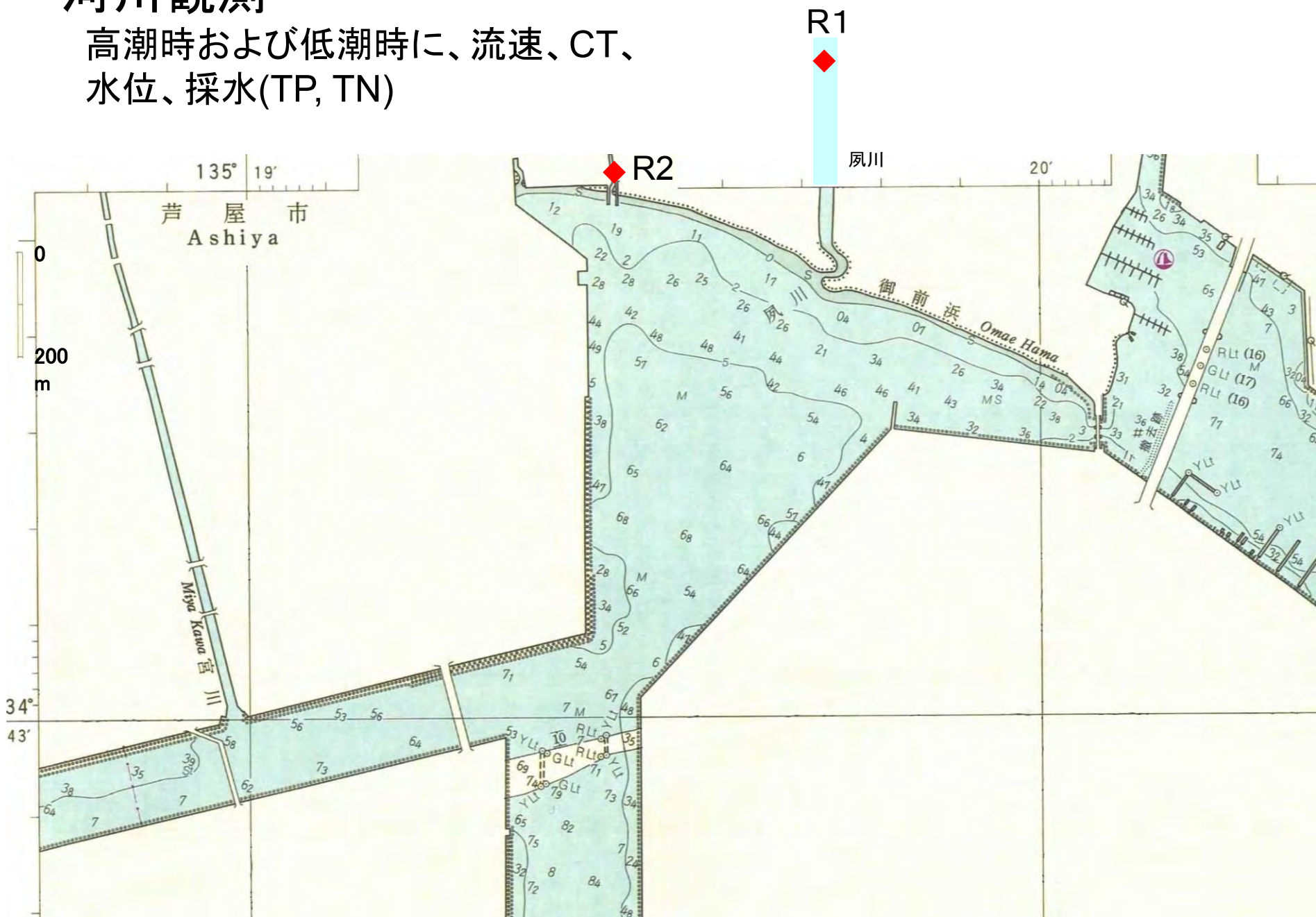
## 原理

- (1) 水中に超音波を発信した際に、懸濁物質の移動速度に応じて波長の変化した反射波が返ってくる（ドップラー効果）。この反射波の位相のズレを解析し、流速を求める。
- (2) 懸濁物質からの反射強度を計測することにより、濁りの相対的な変化を観測できる。



# 河川観測

高潮時および低潮時に、流速、CT、  
水位、採水(TP, TN)





YSI 556MPS



アレック電子 AEM213-D

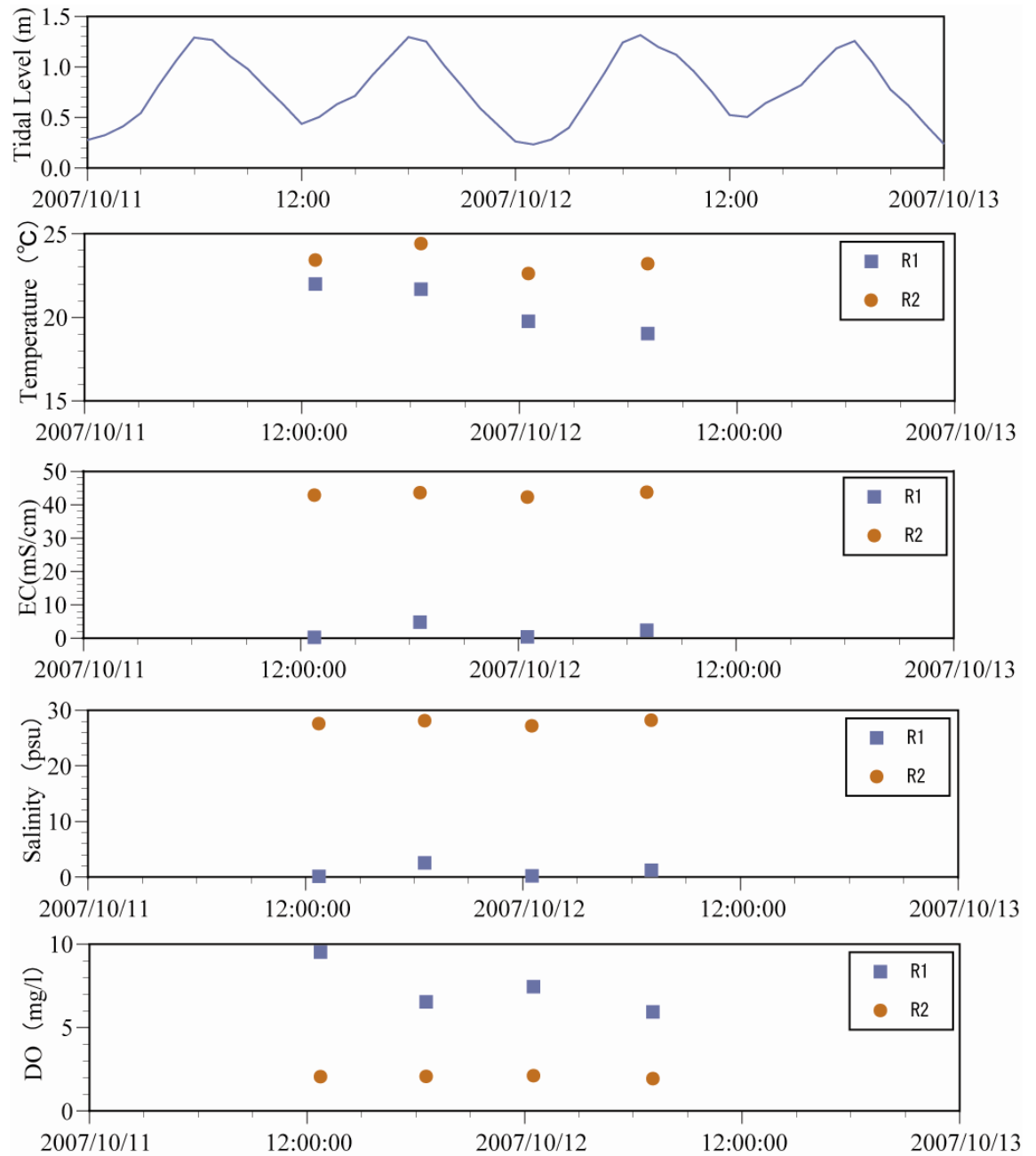
# 河川調査 R1地点

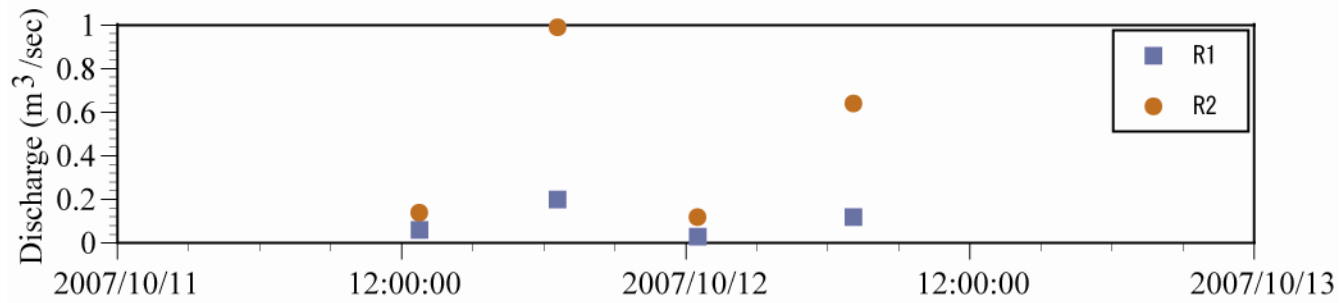
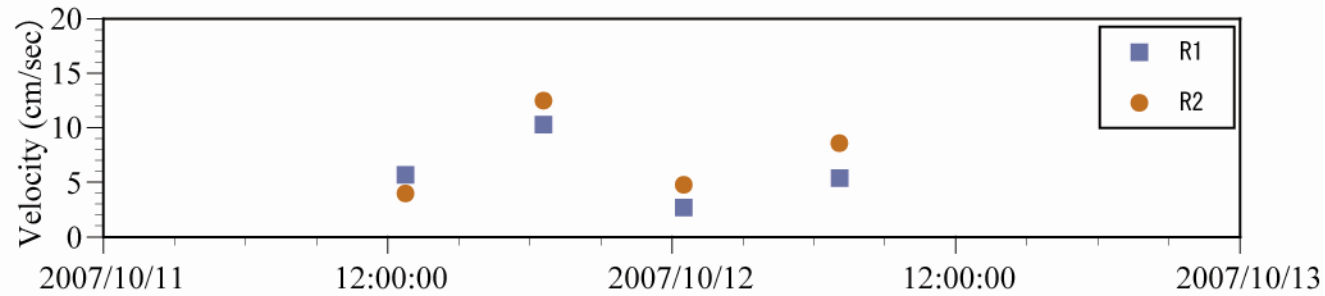
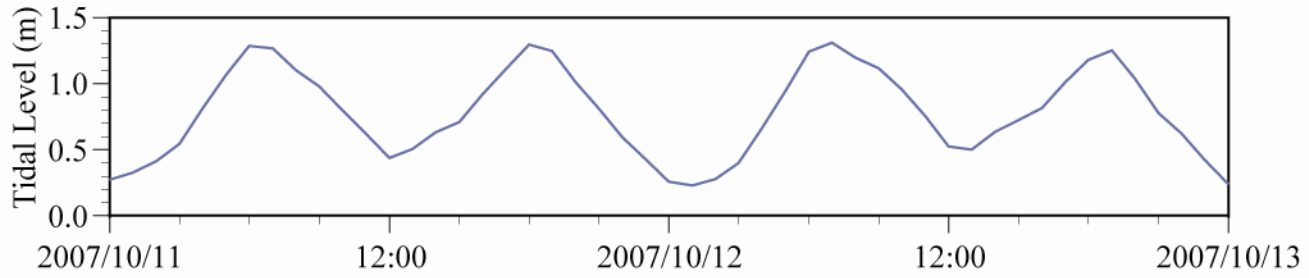


# 河川調査 R2地点



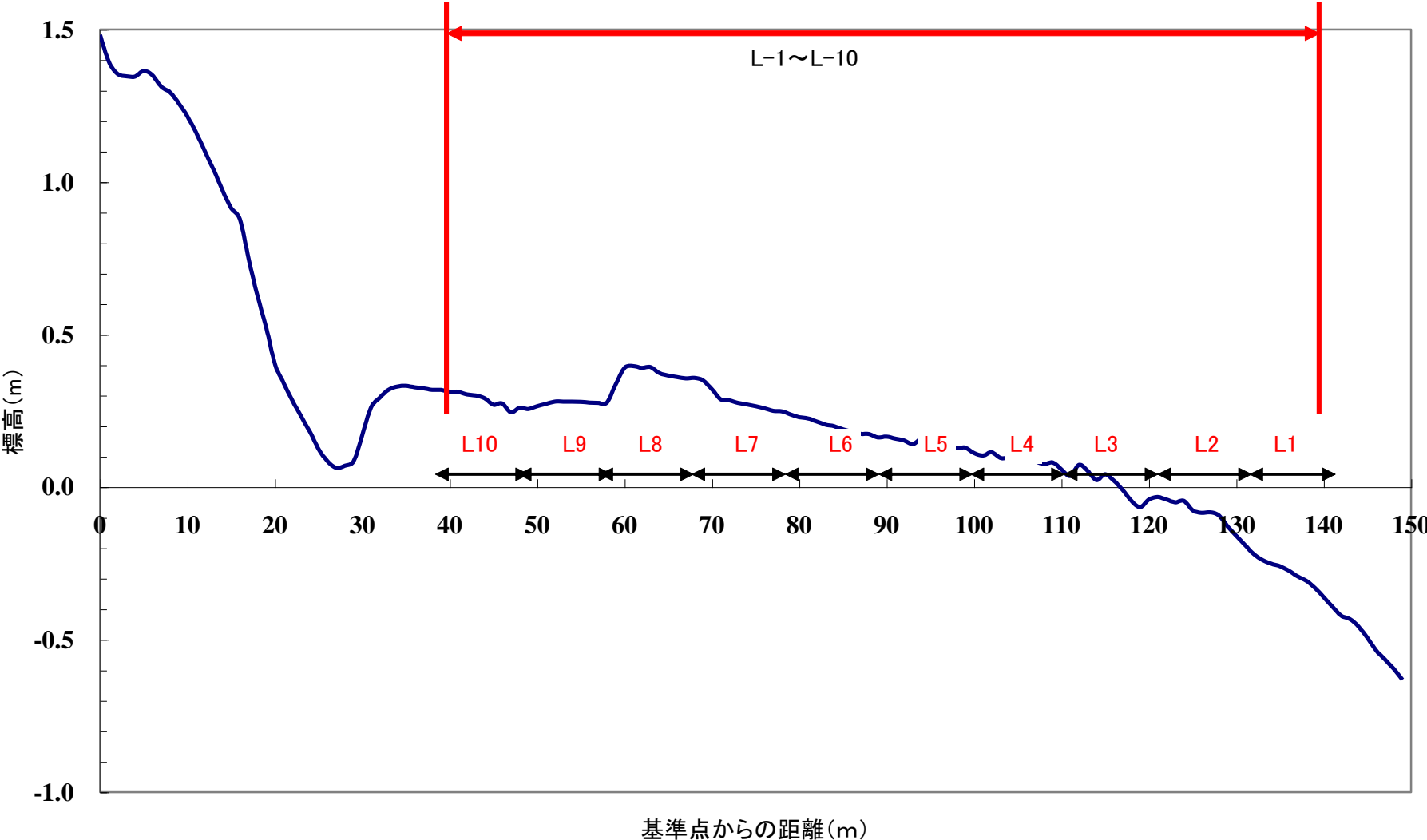
# 河川調査結果







# 二枚貝調査地点

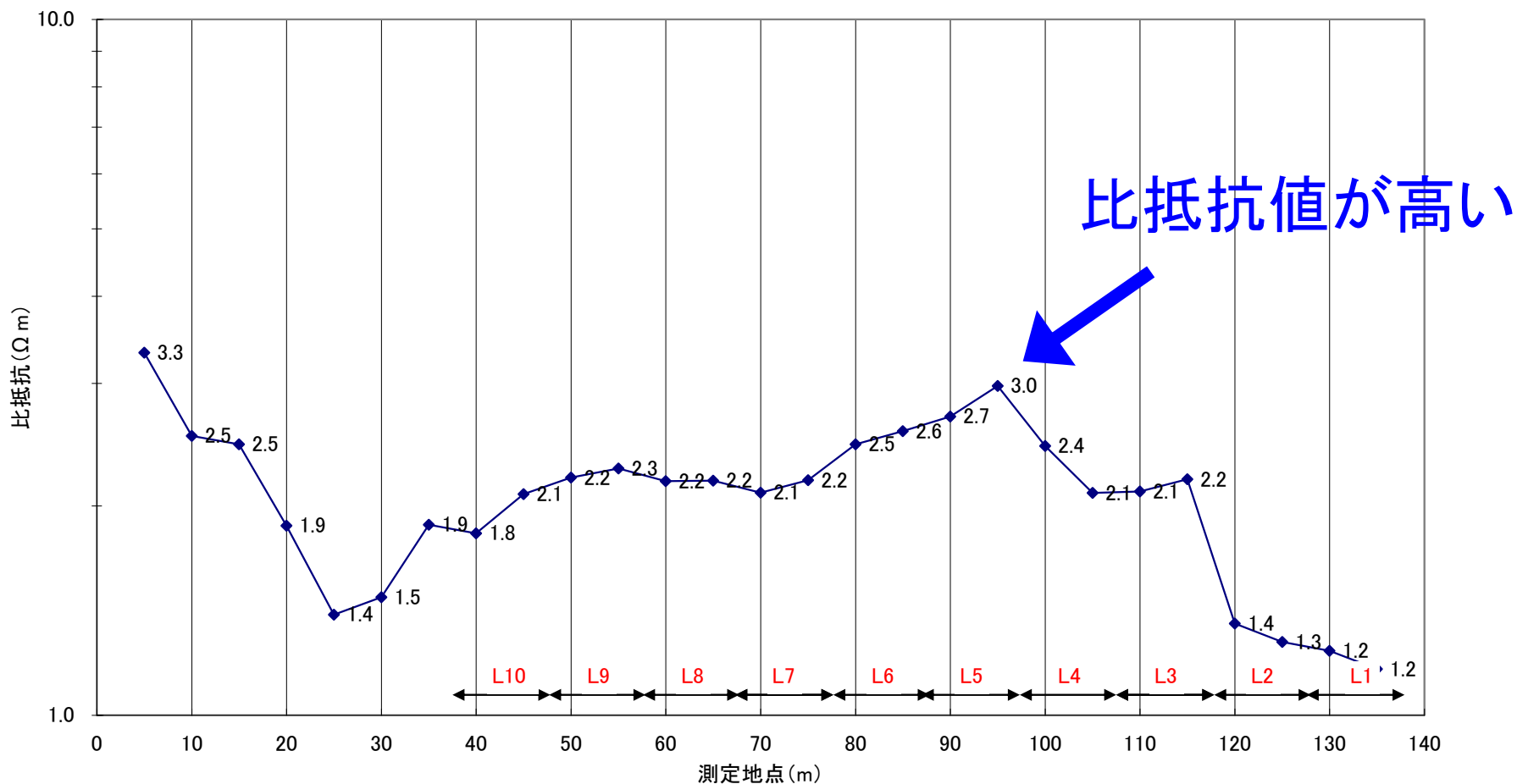






# 比抵抗調査結果

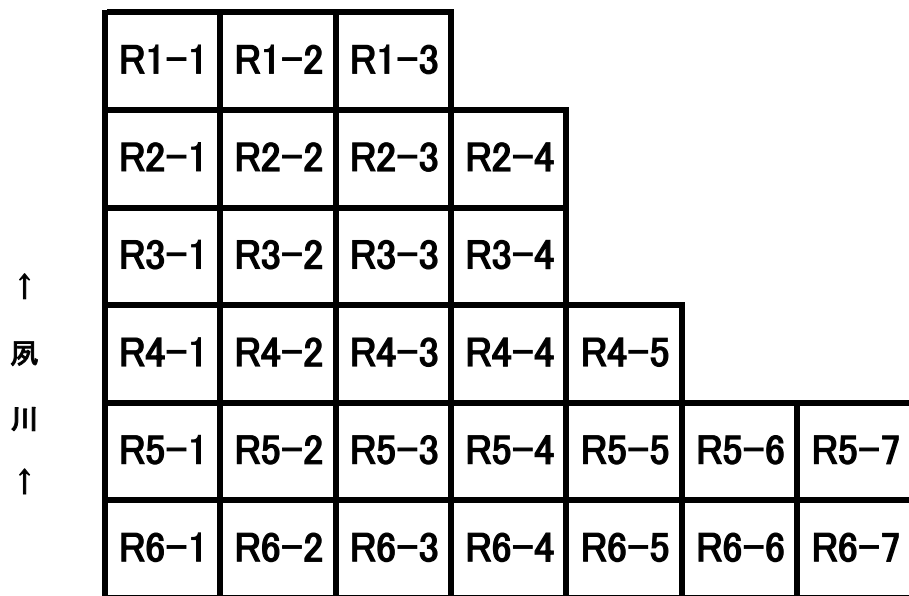
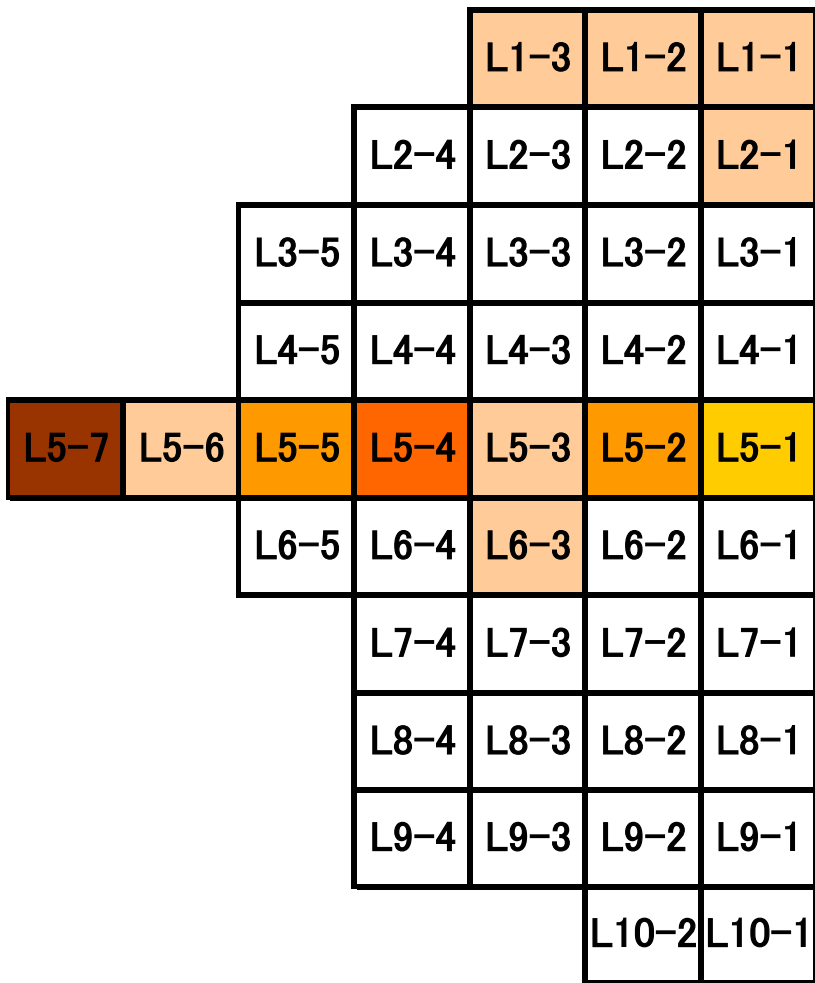
06/8/21 比抵抗( $\Omega$  m)



(兵庫県立大学グループによる結果。図を一部改変。)

# 2006年8月25日調査

## 二枚貝生息状況調査(アサリ)



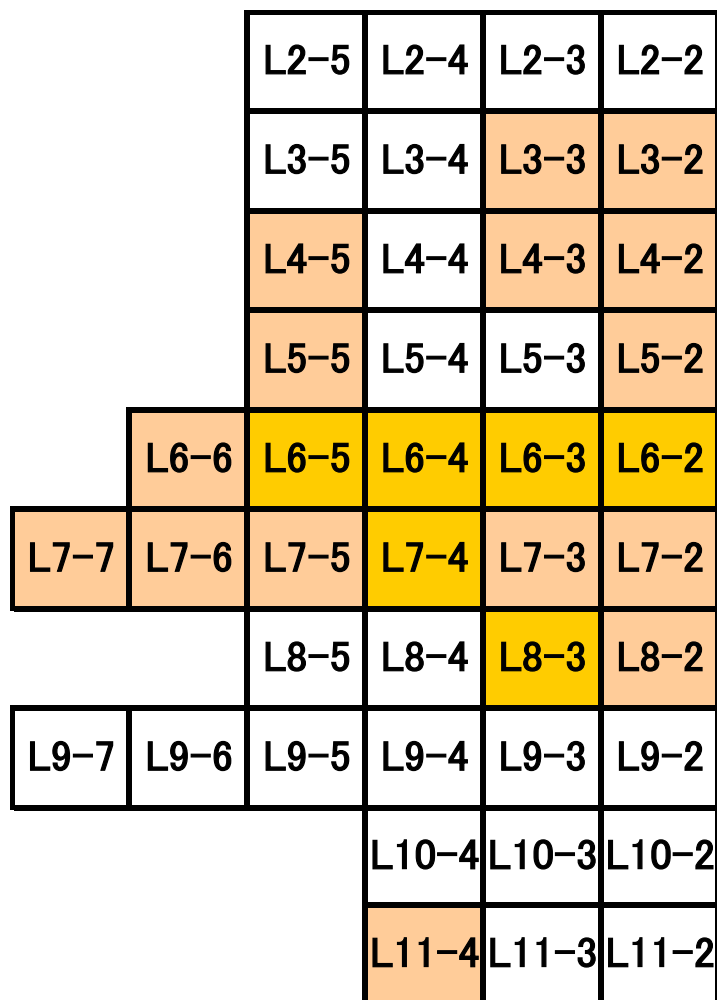
↑  
夙  
川  
↑

個体数

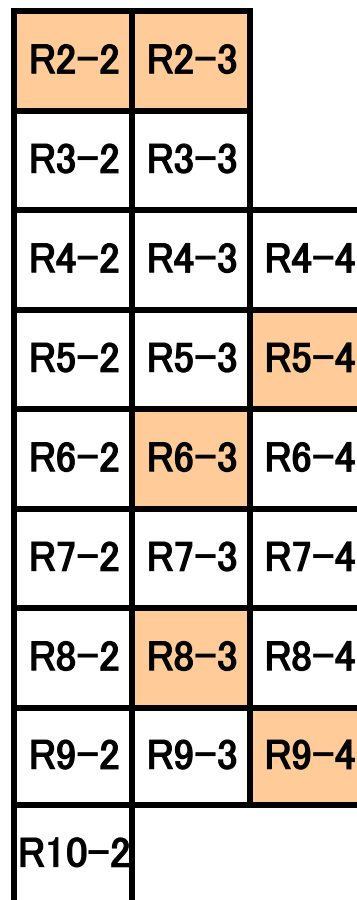


# 2006年11月15日調査

## 二枚貝生息状況調査(アサリ)



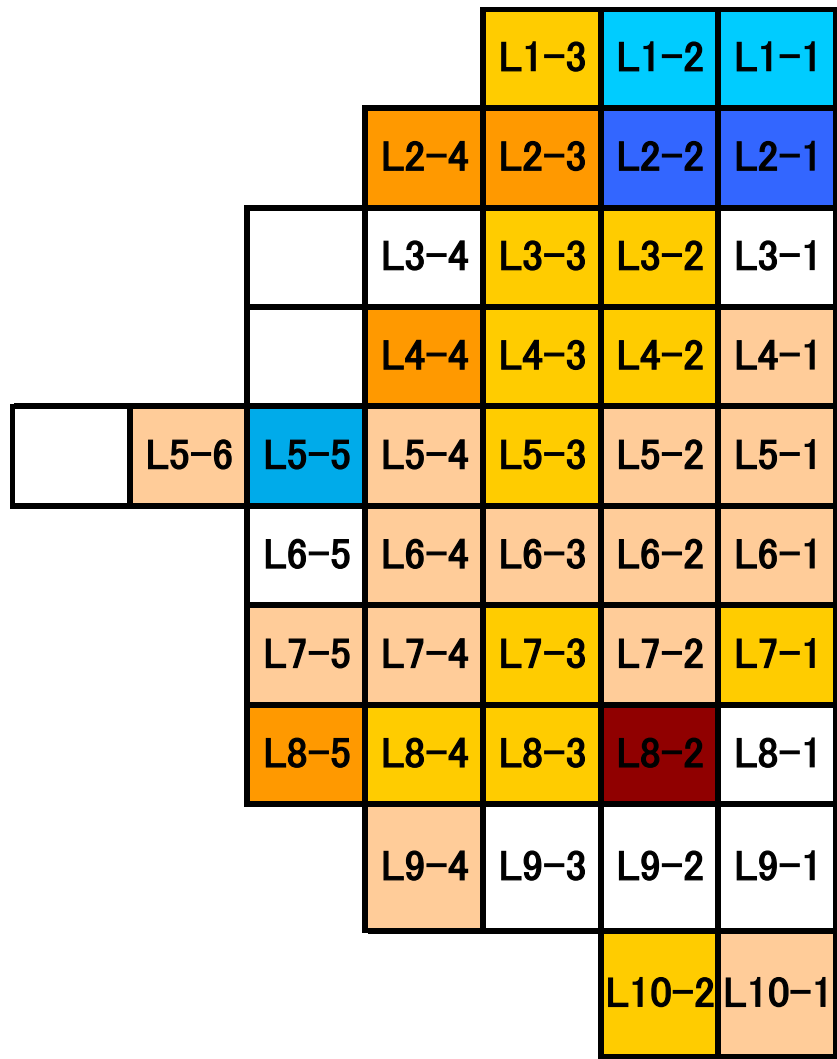
↑  
夙  
川  
↑



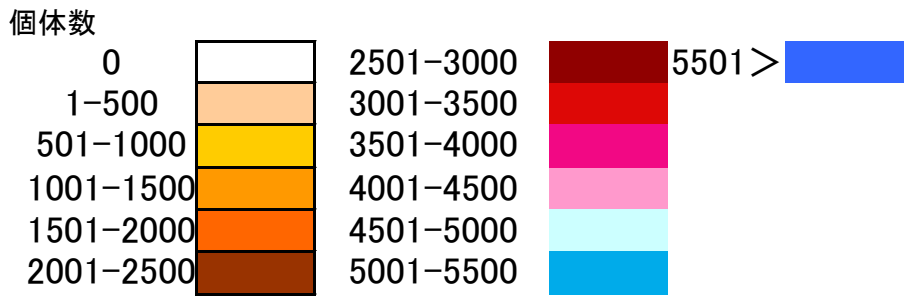
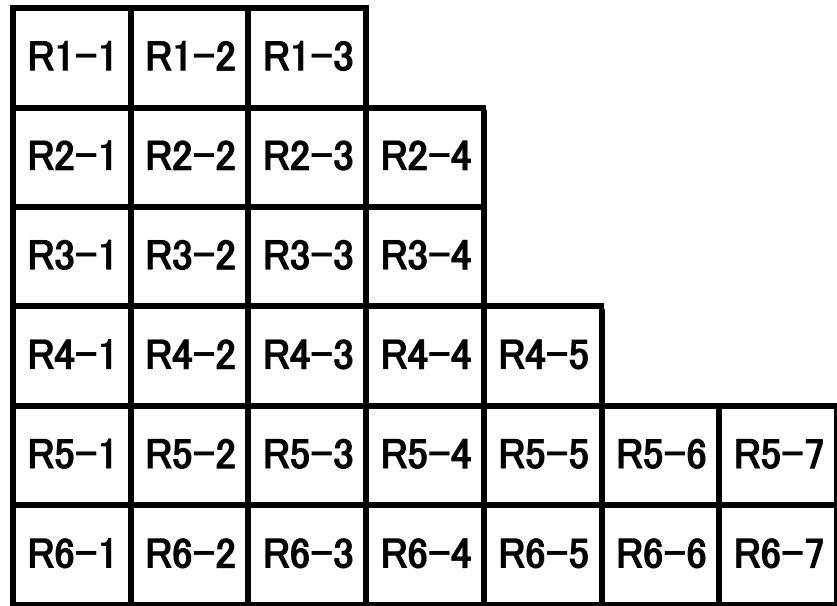
個体数  
0  
1-500  
501-1000  
1001-1500  
1501-2000  
2001-2500



# 2007年10月13日調査 二枚貝生息状況調査(アサリ)

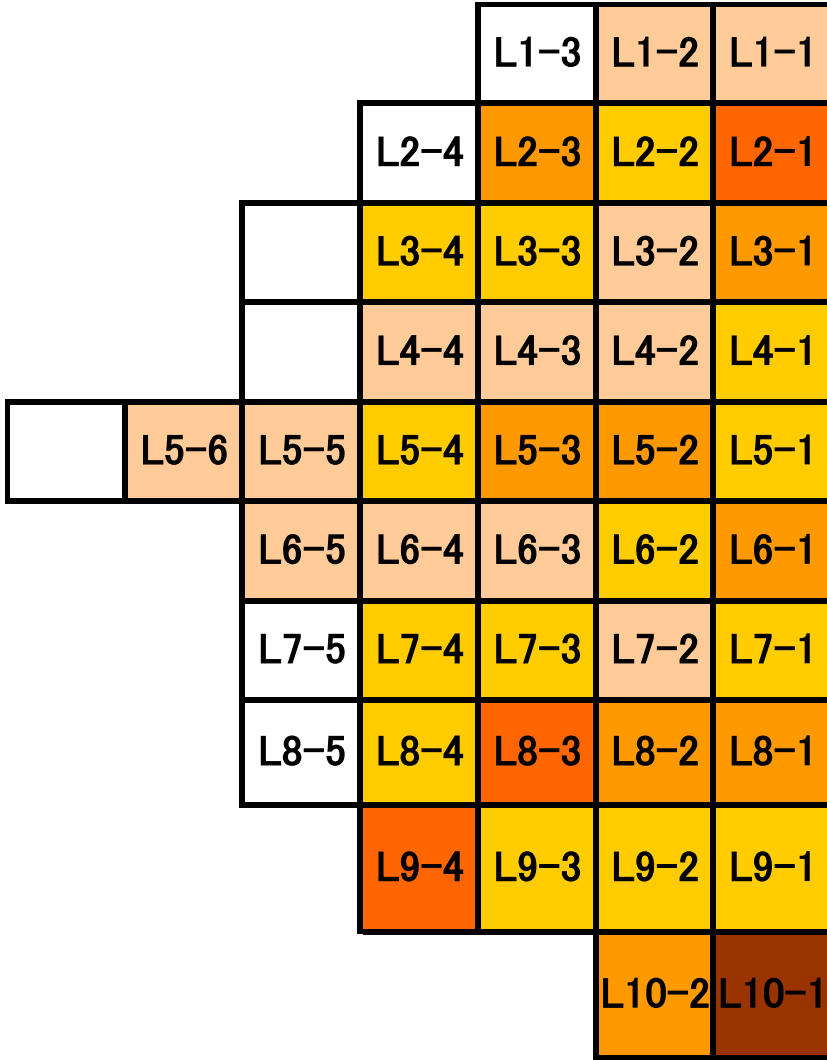


↑  
夙  
川  
↑



# 2007年10月13日調査

## 土壌強度調査(山中式)



↑  
夙川  
↑

