

## KAPUZBAŞI ŞELALELERİ

*Kapuzbaşı Waterfalls located in the Kayseri city border.*

*Its about 3 hours far from the Adana city and second highest waterfall on the earth after niagara.*

*Elevation about 1500m and sources of the came from the snow melts and rains.*

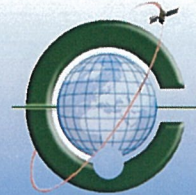
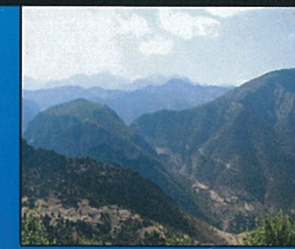
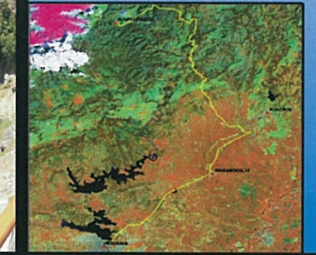
*Kapuzbaşı waterfalls located in the Aladag National Park and its one of the most important stops for tracking and camping.*



CUKUROVA UNIVERSITY  
LANDSCAPE ARCHITECTURE  
DEPARTMENT

## **Kapuzbaşı Waterfalls Field trip**

*Short information paper*



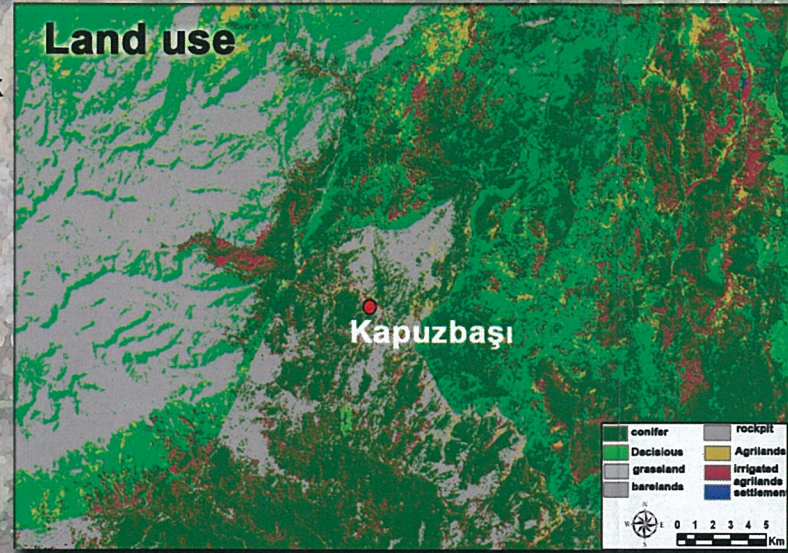
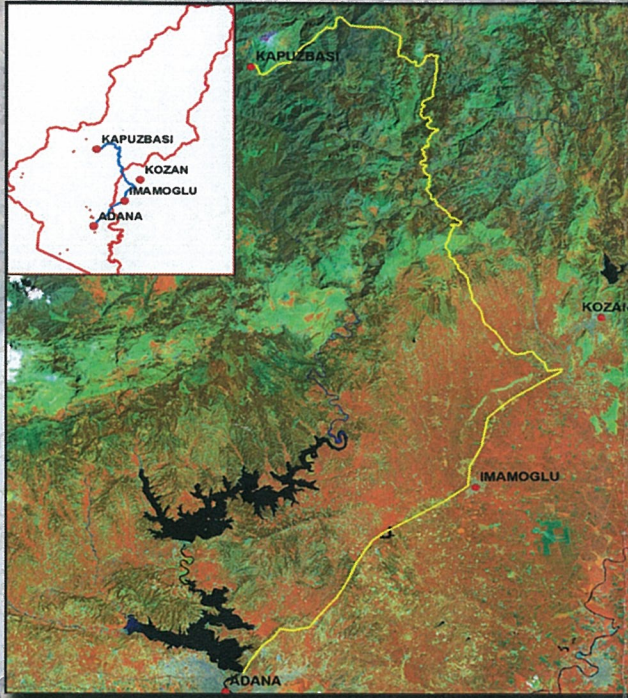
**Cukurova University  
Agriculture Faculty  
Landscape architecture department  
Remote sensing and GIS Lab.**  
Phone: 0322 338 65 45/122  
Web: <http://andgis.cu.edu.tr>

**19 SEP 2011**

# Kapuzbaşı Waterfalls

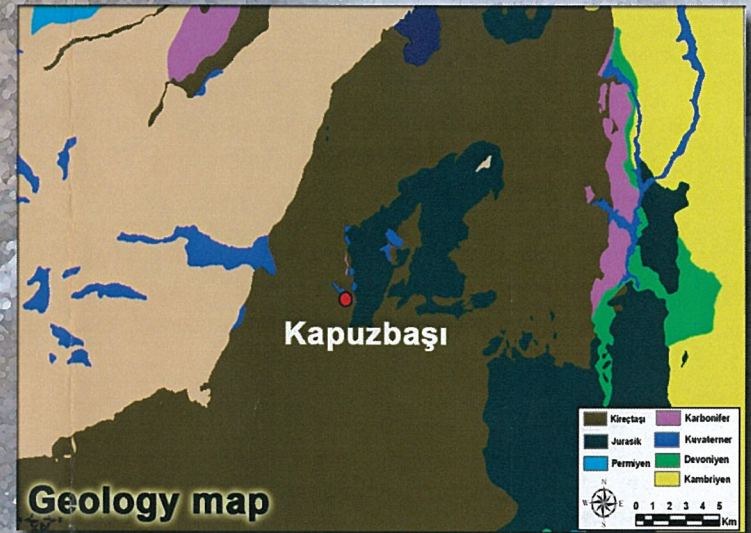
## geographic location and specifications

Kapuzbasi waterfalls located in the Aladag national park area and 180 km far away from the Adana city center



Vegetation is very rich around the Aladag national park. Dominant tree species are turkish pine (*pinus pinea*) and black pine (*pinus nigra*). Also cedar (*picea orientalis*) and tourus fir (*Abies cilicica*) are very big population in the region.

The biggest geological formation is old Mesozoic karstic formation. Additionally its possible to see gatro, piroksenit, subofiolitic metamorfit and yuonger formations called Kuvaterner.



Brown forest soil is the most important soil series in Kapuzbasi region.

