

As a national research institute, RIHN is expected to conduct exemplary science; it also must communicate its research agenda and results to the public and contribute to public awareness and discussion of contemporary environmentalism. A number of public symposia, campaigns, seminar series, and publications are designed to reach specialist and general audiences. Some recent activities and publications include:

The Earth Forum Kyoto and the Earth Hall of Fame Kyoto Award

The Earth Forum Kyoto invites world-renowned experts and activists to discuss the environmental and cultural bases of more responsible human societies. The Earth Hall of Fame Kyoto Award is given to those who have made exemplary contributions to the protection of the global environment. Organizers of the event are the International Institute for Advanced Studies, the Kyoto International Conference Centre, and RIHN. The 2010 recipients of the Earth Hall of Fame Kyoto Award were His Majesty Jigme Singye Wangchuck (Bhutan), Masazumi Harada (Japan) and Elinor Ostrom (USA).



Award ceremony of the Earth Hall of Fame Kyoto

Kyoto Forum on Environmental Wisdom and Culture

RIHN, Kyoto Prefecture and Kyoto City co-host this forum as part of the DO YOU KYOTO? Campaign, a public information campaign designed to stimulate Kyoto residents' environmental consciousness and responsible behavior in everyday life.

RIHN International Symposium

A symposium organized in October of each year to discuss the findings of concluding research projects.

The Past and Future of Diversity, 13-15 October, 2010

International Symposia

International symposia are organized to allow intensive discussion of key project or domain topics. They may be organized by individual projects, RIHN research domains and in collaboration with other institutions. Recent symposia include:

- Rethinking the Impacts of Climate Change in the Past*
Organized by the Indus Project (H-03), Ecohistory Domain, 20-21 August, 2011
- Keystone Species of Human Subsistence Ecosystems in Arab Societies*
Organized by the Arab Subsistence Project (R-05), 20-21 December, 2010
- Ecohistory of the Yellow Belt and Green Belt in Afro-Eurasia*
The 3rd Ecohistory Program Symposium, 21 February, 2010



The 38th RIHN Public Seminar

RIHN Public Seminars

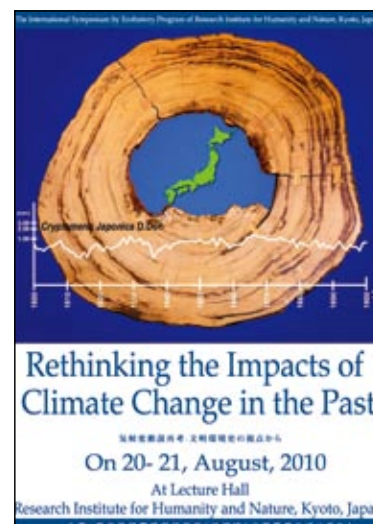
Public seminars are held almost monthly at RIHN or in the city center.

- #38 *Garden Cities or Metrocivilization: Kyoto, Shibuya and the Cities of the Future*
NAKAGAWA Osamu, Kyoto Institute of Technology
MURAMATSU Shin, RIHN
16 April, 2010, Heart Pier Kyoto
- #39 *Haiku and Global Environmental Problems*
TUBOUCHI Toshinori, Bukkyo University
18 June, 2010, Heart Pier Kyoto
- #40 *How Will You Live after Oil Resources are Gone? Part2*
TAKAKI Keiko, J. F. Oberlin University; ISHIYAMA Shun, RIHN
17 September, 2010, Heart Pier Kyoto
- #41 *Oral History and Harmonious Coexistence with Nature: Tlingit Story-Telling by Bob Sam*
Bob Sam, Alaskan Tlingit; HABU Junko, RIHN/U.C. Berkeley
30 November, 2010, Heart Pier Kyoto
- #42 *Learning from Minamata: from Pollution to Global Environmental Problems*
HARADA Masazumi, previously at Kumamoto Gakuen University
15 February, 2011, Heart Pier Kyoto

RIHN Seminars

Invite a range of speakers from abroad to share their expertise with the RIHN community.

- #43 *Problems with Integrating Social and Ecological Processes in a Unified Modeling Framework: A Case study on the Drivers of Landscape Pattern*
MCCAULEY, Stephen, Clark University/Worcester Polytechnic Institute,
7 June, 2010
- #44 *Food Security, Climate Variability and Land Use in Zambia: Methods for Spatial Analysis and Modeling Vulnerability and Resilience of Smallholder Systems*
EVANS, Tom P., Indiana University/RIHN Visiting Research Fellow,
17 June, 2010
- #45 *How Can Academism Contribute to Global Environmental Issues? Agenda Setting as Commitment*
YONEZAWA Shohei, Research Center for Advanced Science and Technology
29 June, 2010
- #46 *Environmental Governance in China*
BAO, Maohong, Beijing University/ RIHN Visiting Research Fellow
8 July, 2010
- #47 *Sustainable Development and Advancing Environmental Governance*
TOEPFER, Klaus, Executive Director, Institute for Advanced Sustainability Studies, Potsdam,
Germany
5 October, 2010
- #48 *New Perspectives on Sustainability: Research, Practice, and Education*
REDMAN, Charles L., Founding Director, School of Sustainability, Arizona State University
27 October, 2010

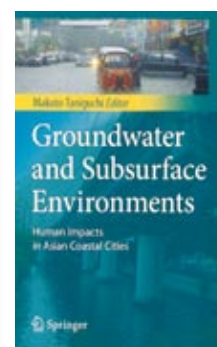
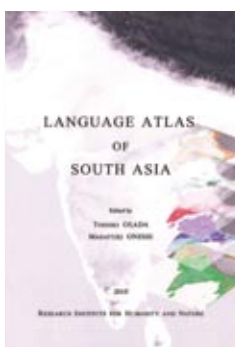
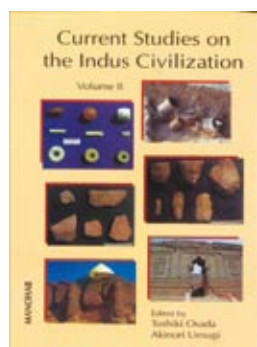
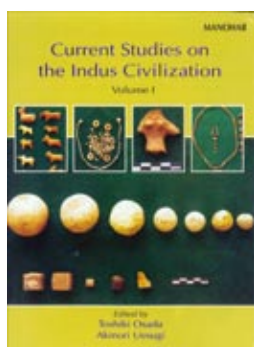


PUBLICATION

RIHN Encyclopedia of Global Environmental Studies

The RIHN Encyclopedia of Global Environmental Studies was published in 2010 to commemorate RIHN's 10th anniversary. In the past decade RIHN research has been disseminated through a remarkable range of academic and popular media, and yet each publication, interview, or workshop can only communicate a part of the whole. The encyclopedia was designed and written in order to address the need for a single, systematic and comprehensive reference work describing RIHN's research in the field of global environmental studies.

RIHN projects and researchers also publish a number of books each year in both Japanese and English.



RIHN within the National Institutes for the Humanities

The National Institutes for the Humanities (NIHU) was established on 1 April 2004. RIHN joined the National Museum of Japanese History, the National Institute of Japanese Literature, the International Research Center for Japanese Studies and the National Museum of Ethnology as a member institute. RIHN shares resources and contributes to joint research with other NIHU institutes, and collaborates in staging public lectures and symposia and other activities designed to generate broad public interest in intersections between the humanities and the environment.

RIHN coordinates two NIHU endeavors on topics of great regional and global significance: Water in Asia, and environmental transformation in China. RIHN is the core institution in the Integrated Study of Water and People in Humid Asia research network, and published themed issues of the journal *Water and People* for a specialist audience. Under the NIHU Center for the Promotion of Area Studies, RIHN established the Research Initiative for Chinese Environmental Issues, the RIHN-China Newsletter (published in Japanese and Chinese), and the Symposium Series on Chinese Environmental Issues, which organizes symposia in both Japan and China. Such works have established RIHN as a central node in the network of scholars concerned with environmental transformation in China.



The international symposium on "Development and Environment, Livelihood, and Health in Southwestern China" was held at Yunnan University on November 2, 2010.

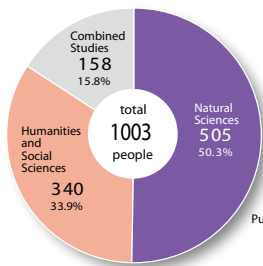


The Ten-Chi-Jin ("Heaven, Earth, People") Newsletter and a poster for a workshop on food in China.

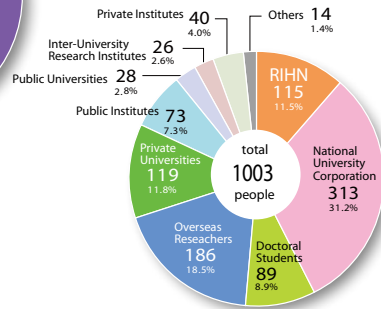


Research Affiliations

Research Areas

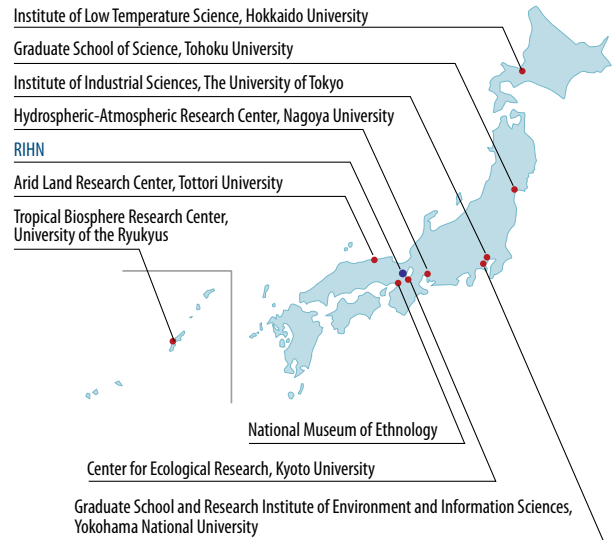


Affiliate Organizations



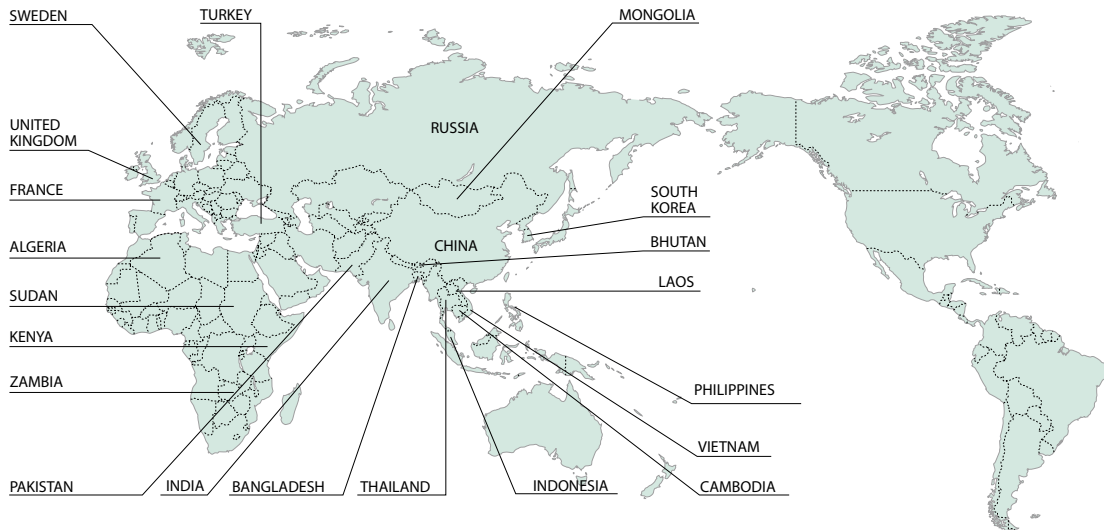
*As of May 1st, 2010

Collaboration in Japan



International Collaboration

Memoranda of Understanding and Research Cooperation Agreements (As of April 1st, 2011)



- ALGERIA**
Centre National de Développement des Ressources Biologiques (R-05)
- BANGLADESH**
International Centre for Diarrhoeal Disease Research (R-04)
- BHUTAN**
Department of Medical Service, Ministry of Health, The Kingdom of Bhutan* (D-03)
- CAMBODIA**
Cambodian Agricultural Research and Development Institute (H-02)
- CHINA**
Fudan University (RIHN-CHINA)
Institute of Archaeology, Chinese Academy of Social Sciences (H-02)
Institute of Mountain Hazards and Environment, Chinese Academy of Sciences (R-03)
Qinghai University Hospital (D-03)
Research Center for Environmental Technology of River and Lake, Shanghai Jiao Tong University (C-06)
Xinjiang Archaeological Research Institute (H-02)
- FRANCE**
La Fondation Maison des Sciences de l'Homme (H-02)
- INDIA**
Institute of Rajasthan Studies, JRN Rajasthan Vidyapeeth (H-03)
Maharaja Sayajirao University of Baroda (H-03)
Maharshi Dayanand University (H-03)
Rajiv Gandhi University (D-03)
- INDONESIA**
Faculty of Agriculture, Hasanuddin University (H-02)
Universitas Indonesia* (C-08)
Indonesian Institute of Sciences (LIPI)* (C-08)

- KAZAKHSTAN**
Institute of Archaeology (R-03)
Institute of Geography (R-03)
Kazakhstan Scientific Research Institute on Problems of the Cultural Heritage on Nomads (R-03)
Tethys Scientific Society (R-03)
- KENYA**
National Museums of Kenya* (C-06)
- LAOS**
National Agriculture and Forestry Research Institute (H-02)
National Institute of Public Health, Ministry of Health (R-04)
- MONGOLIA**
Hustai National Park Trust (D-04)
Institute of Biology, Mongolian Academy of Sciences (D-04)
Institute of Botany, Mongolian Academy of Sciences (D-04)
Institute of Geocology, Mongolian Academy of Sciences (D-04)
Institute of Meteorology and Hydrology, Ministry of Nature and Environment (D-04)
- PAKISTAN**
Shah Abdul Latif University (H-03)
University of the Punjab (H-03)
- PHILIPPINES**
University of the Philippines, Los Baños (H-02)
- RUSSIA**
Far Eastern National University (H-04)
Institute for Biological Problems of Cryolithozone (C-07)
Institute of Humanitarian Research and the Problems of the Northern Minority Peoples (C-07)
The Melnikov Permafrost Institute of Siberian Branch of the Russian Academy of Sciences* (C-07)

- SOUTH KOREA**
Institute of Islands Culture (D-02)
- SUDAN**
Sudan University of Science and Technology (R-05)
- SWEDEN**
The Sven Hedin Foundation (H-02)
- THAILAND**
Rice Department, Ministry of Agriculture and Cooperatives (H-02)
Maejo University* (C-06)
The Southeast Asian Fisheries Development Center* (ISHIKAWA FS)
- TURKEY**
Çukurova University (H-02)
- UNITED KINGDOM**
Sainsbury Institute for the Study of Japanese Arts and Cultures (H-04)
London School of Hygiene and Tropical Medicine* (R-04)
- VIETNAM**
Cuu Long Delta Rice Research Institute (H-02)
- ZAMBIA**
Zambia Agricultural Research Institute, Ministry of Agriculture and Cooperatives (E-04)

*MOU signed in 2010

Research Facilities at RIHN

Research rooms on the RIHN campus are designed to provide a sense of openness. The design concept is to allow implemented projects to be loosely interconnected as they occur in one large curved space 150 meters in length. The facilities help external researchers as well as RIHN research staff to meet one another, since they are designed with the maximization of shared use in mind. At the center of the main building, a library and computer room are located for the convenience of many users, and three common rooms are provided for casual discussions. On the basement floor, a cluster of fully functional laboratories has been designed with emphasis on convenience for shared use, as with the research rooms.

The separate RIHN House is a guesthouse. The assembly hall and a dining lounge located to the left of the house entrance serve as meeting spaces for the RIHN staff as well as for guests.

Appropriately for an institution researching the global environment, RIHN is housed in a tile-roofed building suited to the Kyoto landscape, where as many as possible of the trees already on the site have been retained. Lighting and air-conditioning also employ the latest designs to minimize the building's impact on the environment. The design has won acclaim, receiving awards from the Illumination Engineering Institute of Japan, the Japan Institute of Architects, the Green Building Award from MIPIM Asia, and the Architectural Institute of Japan.



Laboratories

RIHN research projects are multi-disciplinary and multimethod; in common they share the need for high quality physical observation and chemical and biological analysis of the surface environments of the earth. As a national institute, RIHN houses eighteen basement laboratories designed to address this need. There are state-of-the-art laboratories dedicated to microscopic, DNA and stable isotope analysis. Additional facilities include two fieldwork preparation rooms for storage and maintenance of observational and sampling equipment, three low-temperature rooms for organism and ice core storage, three incubator rooms for storage of organisms requiring specific temperatures, and a clean room in which samples can be processed in a contamination-free environment.

Instruments

While individual projects make extensive use of specialized instruments, RIHN provides common access to the advanced instruments essential to contemporary environmental studies. In order to assure the proper use and care for this equipment, and to support its accessibility to the joint research of an inter-university research institute, the Division of Promotion maintains a manual of standard equipment and laboratory procedures. Stable isotope analysis has stimulated environmental science in recent years, and RIHN houses one of the most advanced laboratories for stable isotope analysis in Japan, as well as a range of support instrumentation. In order to facilitate access to the instruments, common consumable supplies are purchased collectively.

Management

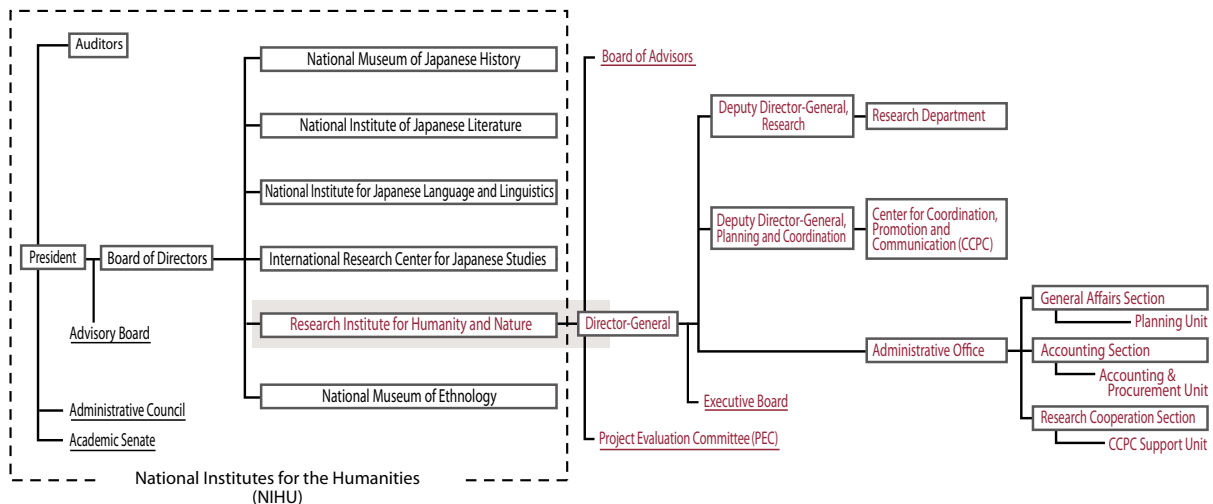
Within the Center for Coordination, Promotion and Communication, the Division of Promotion manages and maintains the research facilities in cooperation with the research projects making use of them. About 200 people from 35 institutes used the RIHN laboratory facilities in fiscal 2009. As new research projects are established at RIHN each year, the Division of Promotion runs workshops several times a year in order to develop general understanding of the facilities and their procedures and enhance communication among lab workers. Laboratory procedures, instrument manuals and information relating to samples in storage are also available on the RIHN laboratory website. Beginning in 2010, the Division of Promotion will also conduct research into new technical methods in environmental studies.



Stable isotope analysis describes how things are linked to one another, where they come from and how they change in contact with other elements and through time. It is a powerful tool in the study of contemporary biogeochemical processes as well as of deep historical change. In analyzing the stable isotopes of the varying elements present in ground-, river-, lake- and other waters of a particular landscape, for example, researchers can describe its original sources as well as the route and time it took to get to its present location. Such description can illuminate how mountain forests and soils contribute to the quality of rice grown on the plains below.

Organization

Organization



Financial Information

■ Segmental Financial Information (Fiscal Year 2009)

Operating Expenses

Category	Amount (Yen in thousands)
Operating Expenses	2,161,952
Inter-University/Joint Research	1,131,399
Outsourced Studies	56,351
Outsourced Operations	61,218
Personnel	912,982
General Management	187,405
Financial Expenses	63,899
Total Expenses	2,413,258

Operational Balance

Operating Income

Category	Amount (Yen in thousands)
Subsidy for Operation	2,160,702
Contract Operations, etc.	75,469
Donations	6,925
Others	188,607
Total Earnings	2,431,705

18,447

■ External Sources of Funding

(Fiscal Year 2009)

Category	Amount (Yen in thousands)
Fund for Promotion of Academic and Industrial Collaboration	78,299
Grants-in-Aids for Scientific Research	78,580
Donations for Research	10,375

* Fund for Promotion of Academic and Industrial Collaboration is the sum of contract research and joint research expenses.



Board and Committees

Board of Advisors

*As of April, 2011

■ Oversees personnel, planning, administration and operation of the institute

FUJII Yoshiyuki
Director-General, National Institute of Polar Research
FURUSAWA Iwao
President, Tottori University of Environmental Studies
IWASAKA Yasunobu
Professor, Kanazawa University Frontier Science Organization
SHIRAHATA Yozaburo
Professor, Research Department, International Research Center for Japanese Studies, NIHU
WASHIDA Kiyokazu
President, Osaka University

YASUNARI Tetsuzo
Professor, Hydrospheric Atmospheric Research Center, Nagoya University
YOKOYAMA Toshio
Professor, Institute for Research in Humanities, Kyoto University
YONEMOTO Shohei
Professor, Research Center for Advanced Science and Technology, The University of Tokyo

ABE Ken-ichi
Professor, CCPC, RIHN
AKIMICHI Tomoya
Professor, CCPC, RIHN
SATO Yo-Ichiro
Deputy Director-General, RIHN
Director, CCPC, RIHN
TANIGUCHI Makoto
Program Director, RIHN
WATANABE Tsugihiko
Deputy Director-General, RIHN
YUMOTO Takakazu
Program Director, RIHN

Project Evaluation Committee (PEC)

■ External review of research project proposals

(Domestic)
IWASAKA Yasunobu
Professor, Kanazawa University Frontier Science Organization
MUSHIAKE Katsumi
Research Counciler, Foundation of River & Watershed Environment Management; Visiting Professor, Graduate School of Engineering, Hosei University
NAKAMURA Masami
Professor, Edogawa University; Former Senior Staff Writer, Editorial Bureau, Nihonkeizai Shimbun Inc.
OHTSUKA Ryutaro
President, Japan Wildlife Research Center
TANAKA Koji
Professor, Young Researcher Development Center, Kyoto University
UETA Kazuhiro
Professor, Graduate School of Global Environmental Studies, Kyoto University
YAMAGATA Toshio
Professor, School of Science, The University of Tokyo
YOKOYAMA Toshio
Professor, Institute for Research in Humanities, Kyoto University

(Overseas)
BELLWOOD, Peter
Professor, School of Archaeology and Anthropology, The Australian National University, Australia
CHUN, Kyung-soo
Professor, Department of Anthropology, Seoul National University, Korea
FU, Congbin
Director, START Regional Center for Temperate East Asia, China; Research Professor, Institute of Atmospheric Physics (IAP) / Chinese Academy of Sciences (CAS), China
IKAWA-Smith, Fumiko
Former Associate Vice Principal, McGill University, Canada
LOVEJOY, Thomas E.
President, The H. John Heinz III Center for Science, Economics and the Environment, USA
OHMURA Atsumu
Professor, Swiss Federal Institute of Technology, Switzerland

Executive Board

■ Oversees administrative operation of the institute

TACHIMOTO Narifumi
Director-General
SATO Yo-Ichiro
Deputy Director-General
Director, CCPC
WATANABE Tsugihiko
Deputy Director-General

KAWABATA Zen'ichiro
Program Director
MOJI Kazuhiko
Program Director
NAKANO Takanori
Program Director

TANIGUCHI Makoto
Program Director
YUMOTO Takakazu
Program Director
IBUKA Junji
Director, Administrative Office

Emeritus Professor

NAKANISHI Masami
WADA Eitaro
NAKAWO Masayoshi
FUKUSHIMA Yoshihiro

Guest Professor

KINOSHITA Tetsuya

In Memoriam

Professor HIDAKA Toshitaka
First Director-General of RIHN

RIHN Staff

■ **DIRECTOR-GENERAL**
■ **DEPUTY DIRECTOR-GENERAL, Planning and Coordination**
■ **DEPUTY DIRECTOR-GENERAL, Research**

TACHIMOTO Narifumi
SATO Yo-Ichiro
WATANABE Tsugihiko

ADMINISTRATIVE OFFICE

■ GENERAL AFFAIRS SECTION

Head **IWASAKA Yutaka**
Deputy Head **YAGI Kiyotaka**
General Affairs Subsection
Head **MATSUO Takashi**
Chief **HARA Akiko**
Personnel Subsection
Head **TANIKAWA Yoshitaka**
Clerk **OKAUCHI Naoko**
Clerk **KIDA Yoshimi**
Planning Unit
Head **YAGI Kiyotaka**
Planning & Assessment Subsection
Head **NISHIMURA Takatoshi**
Clerk **NAKAHOJI Yu**

■ ADMINISTRATIVE DIRECTOR **IBUKA Junji**

Information Subsection
Head **NISHIMURA Takatoshi**
Clerk **NAKAHOJI Yu**
■ **ACCOUNTING SECTION**
Head **MINAMI Kenichi**
Deputy Head **FUJIWARA Koichi**
Financial Planning Subsection
Head **YAMAGATA Satoshi**
Clerk **HONDA Takayuki**
Facility Management Subsection
Head **NISHIKAWA Tomonobu**
Accounting & Procurement Unit
Head **FUJIWARA Koichi**
Accounting & Procurement Subunit
Head **YAGI Tsukasa**
Chief **MURASE Mamiko**

■ RESEARCH COOPERATION SECTION

Head **SARA Toshihisa**
Deputy Head **MAENO Yoshiaki**
Research Cooperation Subsection
Head **SHINNO Masato**
Clerk **TAKATORI Yoko**
International Affairs Subsection
Head **TOKUDA Miki**
CCPC Support Unit
Head **MAENO Yoshiaki**
CCPC Support Subunit
Head **MIHARA Kazuaki**
Clerk **TSUJI Hanako**

RESEARCH DEPARTMENT

■ Program Directors

KAWABATA Zen'ichiro
MOJI Kazuhiko
NAKANO Takanori
TANIGUCHI Makoto
YUMOTO Takakazu

<Program Assistant Directors>

HIYAMA Tetsuya
KUBOTA Jumpei
SAKAI Shoko
UCHIYAMA Junzo
UMETSU Chieko

■ Professors

KADA Ryohei Agricultural Policy,
Environmental Economics
KAWABATA Zen'ichiro Microbial Ecology
MOJI Kazuhiko Human Ecology
MURAMATSU Shin Architectural History,
Urban History
OSADA Toshiki Linguistics
SATO Yo-Ichiro Plant Genetics
TANIGUCHI Makoto Hydrology
WATANABE Tsugihiko Irrigation Engineering
YAMAMURA Norio Mathematical Ecology
YUMOTO Takakazu Plant Ecology

■ Associate Professors

HIYAMA Tetsuya Ecohydrology
KUBOTA Jumpei Hydrology
NAWATA Hiroshi Cultural Anthropology
OKUMIYA Kiyohito Field Medicine
SAKAI Shoko Plant Ecology
UCHIYAMA Junzo Prehistoric Anthropology
UMETSU Chieko Resource & Environmental
Economics

■ Visiting Professors

GOTO Tamon Chinese History, Film
Making
HIMIYAMA Yukio Geography
IEDA Osamu East European Area
Studies, East European
Economic History
KATO Tsuyoshi Comparative Sociology
KAWASAKI Masahiro Atmospheric Chemistry
KOYAMA Shuzo Archaeology
MATOH Toru Plant Inorganic
Biochemistry
NAGAO Seiya Environmental Monitoring
Radionuclides
NAKAJIMA Tsuneo Ichthyology
OKUDA Toshinori Ecology
SHIBAYAMA Mamoru Area Informatics
UCHIBORI Motomitsu Cultural Anthropology

■ Visiting Associate Professors

FUJITA Noboru Grassland Ecology
ISHIKAWA Satoshi Conservation Ecology,
Global Fisheries Science
SHIRAIWA Takayuki Glaciology
TANAKA Ueru Terrestrial Ecosystem
Management

■ Visiting Reseach Fellows

HONG, SUNG Heup Cultural Anthropology,
Japanese Culture
TKACHEV, Sergey Viktorovich Oceanology, Political
Science
YAHYA, Andi Saputra History of Betawi,
Indonesia
ZAMBA, Batjargal Meteorology, Hydrology

■ Senior Project Researchers

C-06 MINAMOTO Toshifumi Molecular Ecology
C-07 FUJIWARA Junko Cultural Anthropology
C-07 SAKAI Toru Satellite Ecology
R-03 CHENGZHI Central Eurasian History
R-06 MASUDA Tadayoshi Natural Resource
Economics
R-06 RAZAFINDRABE, Bam Haja Nirina Disaster Risk Management
H-03 MORI Wakaha Linguistics, Sumerology
H-03 ONISHI Masayuki Linguistic Typology
H-04 MAKIBAYASHI Keisuke Archaeology
H-04 ZEBALLOS VELARDE, Carlos Renzo Urban Environmental
Planning
E-04 LEKPRICHAKUL, Thamana Environmental & Health
Economics

■ Project Researchers

C-06 ABE Akira Sociology, Ethics
C-06 HONJO Mie Environmental microbial
ecology
C-06 TAKAHARA Teruhiko Chemical Ecology
C-07 KOBAYASHI Nakako Forest Meteorology
C-07 OSHIMA Kazuhiro Climatology
C-08 GUSEVA, Anna Southeast Asian
Architectural History,
Urban History
C-08 HAYASHI Kengo Southeast Aian
Architectural History,
Urban History
C-08 MATSUDA Hiroko Southeast Aian
Architectural History,
Urban History
C-08 MEUTIA, Ami Aminah Hydrology
D-03 KOSAKA Yasuyuki Ethnobotany
D-03 SAKAMOTO Ryota Public Health
D-03 NOSE Mitsuhiro Forest Resource
Management
D-04 KATO Satoshi Ecology

D-04 TAKANO Kohei Insect ecology
R-03 NARAMA Chiyuki Physical Geography
R-03 WATANABE Mitsuko Geography
R-04 CAI, Guoxi International Health &
Public Health
R-04 FUKUSHI Yuki Modern Chinese History
R-04 JIANG, Hongwei Human Ecology
R-04 NISHIMOTO Futoshi Social Anthropology
R-04 TOJO Bunpei Area Studies
R-05 ICHIKAWA Kotaro Bioacoustics
R-05 ISHIYAMA Shun Cultural Anthropology
R-05 NAKAMURA Ryo Cultural Anthropology
R-06 SAITO Satoshi Isotope Geochemistry
R-06 YAOTA Kiyoyuki Spatial Econometrics
H-03 ENDO Hitoshi Archaeology
H-04 NAKAMURA Oki Archaeology
H-04 HOSOYA Leo Aoi Archaeobotany,
Ethnoarchaeology
E-04 ISHIMOTO Yudai Ecological Anthropology
E-04 MIYAZAKI Hidetoshi Soil Science

■ Project Research Associates

C-06 IBUKI Naomi
C-06 MASUDA Yoshie
C-07 SHIMIZU Hiromi
D-04 KITAMURA Naoko
R-03 YODEN Makoto
R-05 HAFIZ KOURA, Hafiz Mohamed Fathy
R-05 ISHII Yume
R-05 MIZUMA Sakiko
R-05 Wang, Na
H-04 KAMURA Nozomi
H-04 OTANI Megumi
H-04 UCHIKADO Megumi
E-04 ITO Chihiro
E-04 WEYGANDT, Mayumi Kanzaki

■ Research Fellow, NIHU Center for Area Studies / RIHN Initiative for Chinese Environmental Issues (RIHN-China)

MATSUNAGA Kohei Geography

Center for Coordination Promotion and Communication (CCPC)

■ Heads of Divisions

Division of Coordination TANIGUCHI Makoto
Division of Promotion SEKINO Tatsuki
Division of Communication ABE Ken-ichi

■ Head, Core Research Hub

YUMOTO Takakazu

■ Professors

ABE Ken-ichi Ecological Anthropology
AKIMICHI Tomoya Integrated Area Study
NAKANO Takanori Isotope Environmental Studies
SATO Yo-Ichiro Plant Genetics

■ DIRECTOR SATO Yo-Ichiro

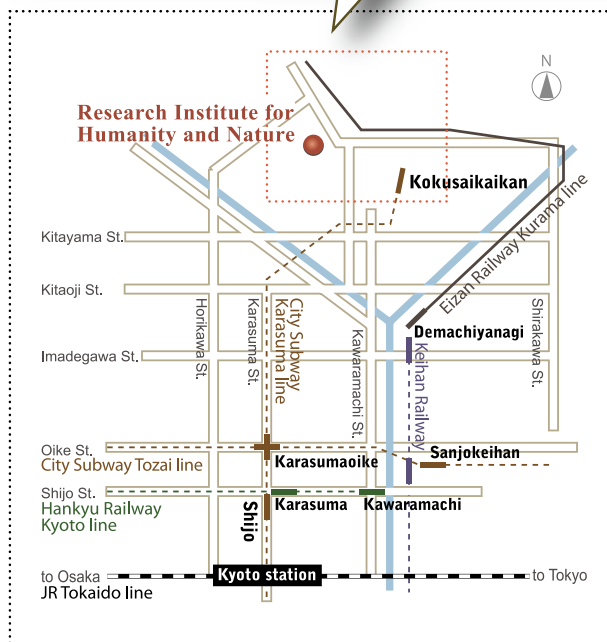
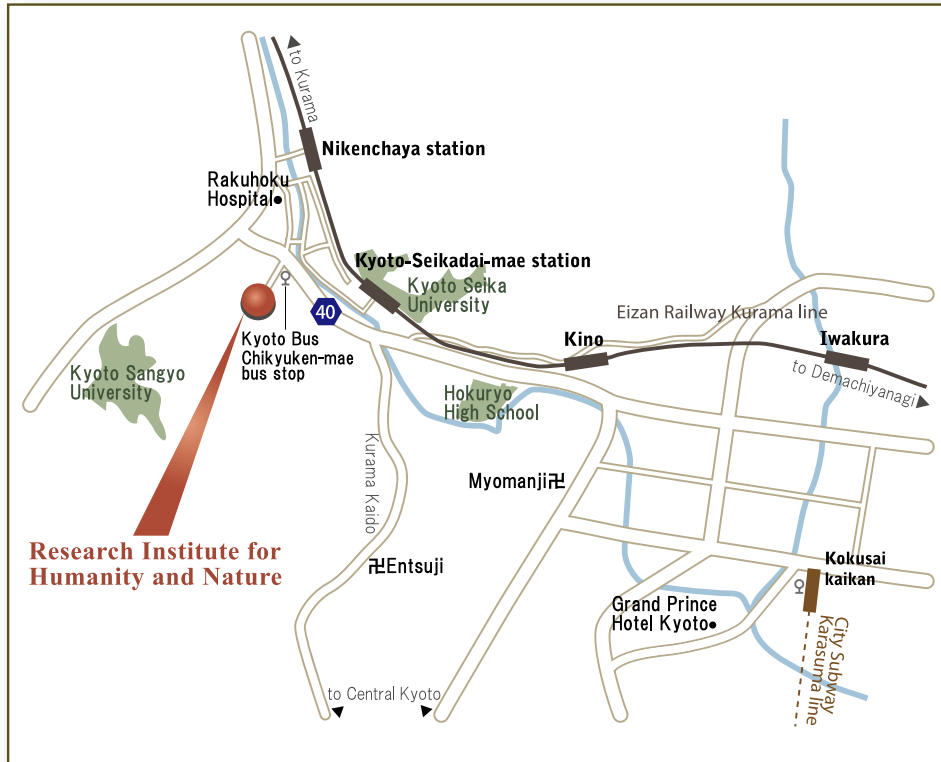
TANIGUCHI Makoto Hydrology
YUMOTO Takakazu Plant Ecology

■ Associate Professors

HANDOH Itsuki C. Earth Systems Science, Mathematical Modeling
KUME Takashi Isotopic Soil Hydrology
KURATA Takashi Philosophy
SEKINO Tatsuki Information Science

■ Assistant Professors

KOHMATSU Yukihiko Ecology Geography
NILES, Daniel Geography
UYAR, Aysun International Relations, International Political Economy
YASUTOMI Natsuko Meteorology, Climatology



By City Subway

From Kyoto Station, take the Karasuma Line to Kokusaikaikan Station (the last station), and transfer to Kyoto Bus as below.

By Kyoto Bus

From Kokusaikaikan Station, take bus No. 40 or 50 to Chikyuken-mae. RIHN is at the base of the hill to your left.

By Eizan Railway

From Demachiyanagi Station in Kyoto City, take the Kurama line. Exit at Nikenchaya Station. RIHN is a 10 minute walk to the South.