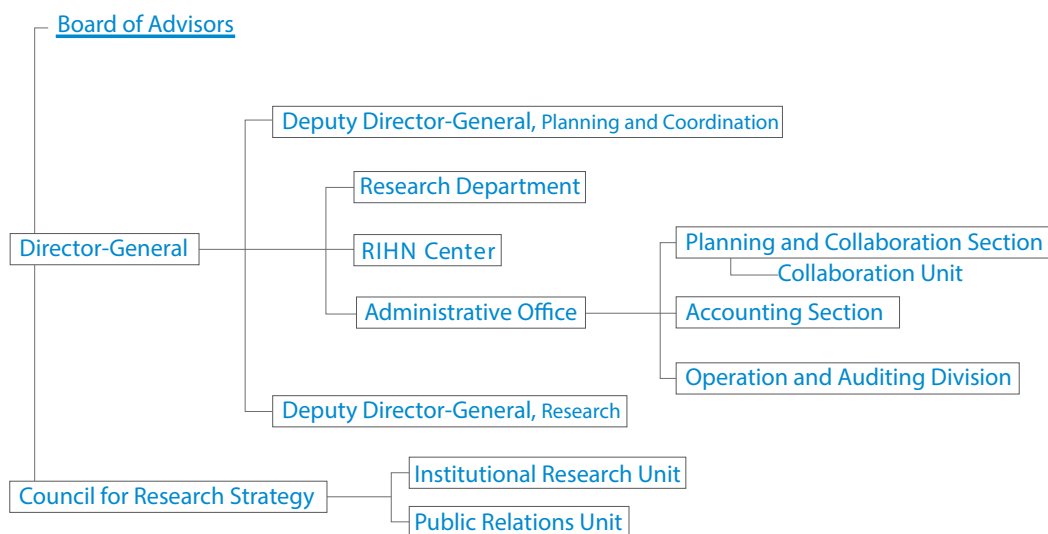


Administrative Structure



Financial Information

Segmental Financial Information (Fiscal Year 2014)

Operating Expenses

Category	Amount (Yen in thousands)
Operating Expenses	1,822,095
Inter-University/Joint Research	900,269
Outsourced Studies	96,217
Outsourced Operations	55,589
Personnel	770,018
General Management	106,280
Financial Expenses	28,891
Total Expenses	1,957,267

Operating Income

Category	Amount (Yen in thousands)
Subsidy for Operation	1,735,773
Contract Operations, etc.	69,718
Donations	4,997
Others	155,339
Total Earnings	1,965,829

Operational Balance 8,562

External Sources of Funding

(Fiscal Year 2014)

Category	Amount (Yen in thousands)
Fund for Promotion of Academic and Industrial Collaboration	93,503
Grants-in-Aids for Scientific Research	70,590
Donations for Research	13,582

* Fund for Promotion of Academic and Industrial Collaboration is the sum of contract research expenses.



Boards and Committees

*As of April, 2016

Board of Advisors

Oversees personnel, planning, administration and operation of the institute

IKEYA Kazunobu
Professor, National Museum of Ethnology
KADA Yukiko
President, Biwako Seikei Sport College
KANZAWA Hiroshi
Dean, Graduate School of Environmental Studies, Nagoya University
KOIKE Toshio
Professor, School of Engineering, The University of Tokyo
KONO Yasuyuki
Director, Center for Southeast Asian Studies, Kyoto University

NIIKAWA Tatsuro
Professor, Graduate School of Policy and Management, Doshisha University
NOE Keiichi
President-appointed Extraordinary Professor, Institute of Liberal Arts and Sciences, Tohoku University
OTSUKI Kyoichi
Professor, Faculty of Agriculture, Kyushu University

KUBOTA Jumpei
Deputy Director-General, RIHN
Director, RIHN Center, RIHN
TANIGUCHI Makoto
Deputy Director-General, RIHN
Core Program Director, RIHN
MALLEE, Hein
Professor, RIHN
NAKATSUKA Takeshi
Professor, RIHN
SATO Tetsu
Professor, RIHN
TANAKA Ueru
Professor, RIHN
TAYASU Ichiro
Professor, RIHN

External Research-Evaluation Committee

External review of research project proposals

Domestic

KOIKE Isao
Professor Emeritus, the University of Tokyo
NAKANISHI Hisae
Professor, Graduate School of Global Studies, Doshisha University
TODA Takao
Director General Human Development Department, International Cooperation Agency (JICA)
UCHIBORI Motomitsu
Professor, The Open University of Japan
WADA Eitaro
Member of the Japan Academy / Professor Emeritus, Kyoto University
YASUOKA Yoshifumi
Professor Emeritus, The University of Tokyo

Overseas

BAI, Xuemei
Professor, Fenner School of Environment and Society, Australian National University, Australia
BINDER, Claudia
Professor, Laboratory for Human-Environmental Relations in Urban Systems (HERUS), IIE - ENAC - EPFL, Switzerland
LU, Yonglong
Professor, Research Center for Eco-Environmental Science Chinese Academy of Sciences, China
MCDONALD, Anne
Professor, Graduate School of Global Environmental Studies, Sophia University, Japan
RANDALL, Roland
Life Fellow, Girton College, University of Cambridge, UK
SCHOLZ, Roland
Professor Emeritus, Institute for Environmental Decisions, Swiss Federal Institute of Technology Zurich, Switzerland
VAN DER LEEUW, Sander
Foundation Professor, School of Sustainability, Arizona State University, USA
ZHANG, Shiqiu
Professor, College of Environmental Sciences and Engineering, Peking University, China

Council for Research Strategy

Oversees research strategy, personnel, project, and evaluation system

YASUNARI Tetsuzo	Director-General	SUGIHARA Kaoru	Specially Appointed Professor	TANAKA Ueru	Professor
KUBOTA Jumpei	Deputy Director-General	MALLEE, Hein	Professor	TAYASU Ichiro	Professor
TANIGUCHI Makoto	Deputy Director-General	NAKATSUKA Takeshi	Professor	KAWANO Hiroshi	Director, Administrative Office
NAKASHIZUKA Tohru	Visiting Professor	SATO Tetsu	Professor		

Senior Advisor

TACHIMOTO Narifumi

Professors Emeritus

NAKANISHI Masami
WADA Eitaro
HIDAKA Toshitaka
NAKAWO Masayoshi
FUKUSHIMA Yoshihiro
AKIMICHI Tomoya
KAWABATA Zen'ichiro
OSADA Toshiki
TACHIMOTO Narifumi
SATO Yo-ichiro
MOJI Kazuhiko
KADA Ryohei
NAKANO Takanori

RIHN STAFF

■ DIRECTOR-GENERAL	YASUNARI Tetsuzo
■ DEPUTY DIRECTOR-GENERAL (Planning and Coordination)	KUBOTA Jumpei
■ DEPUTY DIRECTOR-GENERAL (Research)	TANIGUCHI Makoto

ADMINISTRATIVE OFFICE

■ ADMINISTRATIVE DIRECTOR KAWANO Hiroshi

PLANNING AND COLLABORATION SECTION

Head HIRAIISHI Noriyoshi
Deputy Head KITA Yoshifumi

General Affairs and Planning Subsection

Head BIVONE Junko
Clerk INOUE Yuko
Clerk KARIYA Midori
Clerk NAGATA Satoko
Clerk NAKANISHI Keita

Personnel Subsection

Head NAGATA Yukihiko
Clerk NAKAOHJI Yu
Clerk TANAKA Naoko

International Affairs Subsection

Chief FUJIKAWA Takeshi

Collaboration Unit

Head UEDA Yasutoshi

Research Planning Subunit

Head NARUI Akinori
Chief ISHII Hatsue

Cooperative Research Support Subunit

Head ZENIZUKA Rie
Clerk MASUDA Maho

ACCOUNTING SECTION

Head OBAYASHI Reiko
Deputy Head TERAZAWA Kunihiko

Financial Planning Subsection

Head MIYAUCHI Teruaki
Clerk TSUJIMURA Hanako

Facility Management Subsection

Head OISHI Toru

Procurement Subsection

Head NONAMI Masatoshi
Clerk SAWAMURA Takahiro

Accounting Subsection

Head UEGAKI Yasuhiro

OPERATION AND AUDITING DIVISION

Head OBAYASHI Reiko

Auditing Subunit

Head MIYAUCHI Teruaki

RESEARCH DEPARTMENT

Program Directors

NAKASHIZUKA Tohru	Forest Ecology, Biodiversity
SUGIHARA Kaoru	Economic History, Environmental History

Professors

HABU Junko	Environmental Anthropology, Historical Ecology, East Asian Archaeology
ISHIKAWA Satoshi	Conservation Ecology, Global Fisheries Science
NAKATSUKA Takeshi	Biogeochemistry, Paleoclimatology
SATO Tetsu	Local Environmental Studies, Conservation Ecology
TANAKA Ueru	Agricultural Studies

Associate Professors

ENDO Aiko	Marine and Coastal Policy, Fishery Economics
KIKUCHI Naoki	Environmental Sociology
MCGREEVY, Steven R.	Environmental Sociology
OKUDA Noboru	Ecological Science

Specially Appointed Professor

SUGIHARA Kaoru	Economic History, Environmental History
----------------	---

Visiting Professors

FUNAMIZU Naoyuki	Sanitary Engineering
HIYAMA Tetsuya	Ecohydrology
KANEKO Shinji	Environmental Economics
KANIE Norichika	Earth System Governance
KASUGA Fumiko	Food Safety
KUSAGO Takayoshi	Action-based Development Studies
MATSUI Takeshi	Nature in Cultural Perspectives
MIZUNO Kosuke	Area Study on Indonesia
MURAMATSU Shin	Architectural History, Urban History
MURAYAMA Satoshi	Economic/Environmental History
NAKASHIZUKA Tohru	Forest Ecology, Biodiversity

NAWATA Hiroshi	Cultural Anthropology
RAMPISELA, Dorotea Agnes	Soil and Water Management
SAKAKIBARA Masayuki	Earth and Environmental Sciences
UCHIYAMA Junzo	Environmental Archaeology, Landscape History
YONEMOTO Shohei	History and Philosophy of Science

Visiting Associate Professors

ICHIE Tomoaki	Forest Ecology
HANDOH Itsuki C.	Earth Systems Science, Mathematical Modeling
HOMMA Kousuke	Forest Ecology
SHIRAIWA Takayuki	Glaciology
TAKAGI Akira	Fisheries Science, Molecular Ecology
TERADA Masahiro	History, Museum Anthropology
YASUTOMI Natsuko	Meteorology, Climatology
YOSHIDA Takehito	Ecology

Invited Scholar

ALTIERI, Miguel Angel	Agroecology
BRONDIZIO, Eduardo Sonnewend	Anthropology
NEWELL, Joshua Peter	Urban Sustainability

*As of May, 2016

Senior Project Researchers

SANO Masaki	Paleoclimatology
TAMURA Norie	Natural Resource Management
WATANABE Kazuo	Area Studies

Project Researchers

ADACHI Kaori	Archaeology
ASANO Satoshi	Regional Planning
ISHIDA Takuya	Forest Environmental Science
ISHIYAMA Shun	Cultural Anthropology
ITO Keisuke	Japanese History
KAMATANI Kaoru	History
KITAMURA Kenji	Environment
KOBAYASHI Mai	Environmental Sociology

MASUHARA Naoki	Public Administration Studies, Energy Policy
MIKI Hiroshi	Statistical Physics
MIYAZAKI Hidetoshi	Soil Science
OH Tomohiro	Resource Governance
OMOTO Reiko	Geography, Food Studies, Social Network Analysis
OTA Kazuhiko	Japanese Environmental Ethics
RUPPRECHT, Christoph D.D.	Geography
SHINKAI Rika	Archaeology, Ethnology
TAKEMURA Shion	Landscape Ecology
TESHIROGI Koki	Geography
TSUSHIMA Akane	Paleoclimatology
YAMADA Makoto	Hydrology

Project Research Associates

FUKUSHIMA Atsuko	
HONDA Hisami	Coastal Oceanography
HONMA Saki	
ISOKAWA Aki	
KAKIOKA Ryo	Evolutionary Ecology of Fish
KIHIRA Tomoe	
KITOLELEI, Jokim Veu	Fisheries Resource Management
KOBAYASHI Yuko	
LI Zhen	Earth and Environmental Sciences
MATSUOKA Yuko	
OJIKI Yukari	
OKAMOTO Takako	
TAKEHARA Mari	
TERAMOTO Shun	
TOMII Noriko	
UEHARA Yoshitoshi	Ecology
WATANABE Kirie	
YAMAMOTO Mami	

FS Researcher

NAITO Daisuke	Southeast Asian Area Study, Political Ecology
---------------	---

RIHN Center

DIRECTOR KUBOTA Jumpei

Core Program Director TANIGUCHI Makoto

Heads of Divisions

Laboratory and Analysis Division	TAYASU Ichiro
Information Resources Division	SEKINO Tatsuki
Collaboration Division	MALLEE, Hein
Communication Division	ABE Ken-ichi

Professors

ABE Ken-ichi	Ecological Anthropology
KUBOTA Jumpei	Hydrology
MALLEE, Hein	Social Science
SEKINO Tatsuki	Information Science
TANIGUCHI Makoto	Hydrology
TAYASU Ichiro	Isotope Ecology, Isotope Environmental Science

Associate Professors

ISHII Reichiro	Theoretical Ecology
KONDO Yasuhisa	Archaeology, GIS
NILES, Daniel	Geography

Assistant Professors

KUMAZAWA Terukazu	Environmental Planning, Regional Informatics
ONISHI Yuko	Biogeography, Macroecology
SHIN Kicheol	Petrology, Geochemistry, Isotope Geology

Specially Appointed Assistant Professor

TAKESHIMA Hirohiko	Molecular Ecology, Evolutionary Genetics
--------------------	--

Research Fellow, NIHU Center for Transdisciplinary Innovation (Ecohealth)/ Specially Appointed Assistant Professor

JIANG Hongwei	Human Ecology
---------------	---------------

Center Researchers

KATO Yoshikazu	Aquatic Ecology
NISHIMURA Takeshi	Environmental Economics
SAITO Yu	Sedimentology
YOSHIMIZU Chikage	Biogeochemistry

Center Research Associates

HAYASHI Kengo	Urban History in Southeast Asia
KISHIMOTO Sayaka	International Collaboration Studies
MATSUBAYASHI Jun	Stable Isotope Ecology
MIMURA Yutaka	Architectural History, Urban History, Historical GIS
OKA Masami	
OSADA Yutaka	Ecology
OHTA Tamihisa	Forest ecology, Ecological Stoichiometry
SHIMADA Nahoko	Study of Ecological Thought
YABUSAKI Shiho	Isotope Hydrology

Institutional Research Unit

HEAD TANIGUCHI Makoto

Members of Unit

KUBOTA Jumpei SATO Tetsu TAYASU Ichiro KONDO Yasuhisa KUMAZAWA Terukazu

Specially Appointed Technical Officer

OSHIUMI Keiichi

Public Relations Unit

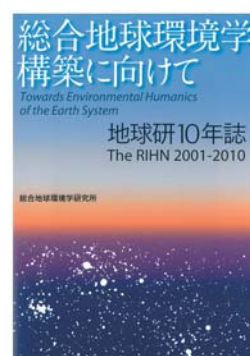
HEAD KUBOTA Jumpei

Members of Unit

ABE Ken-ichi ISHIKAWA Satoshi SEKINO Tatsuki TANAKA Ueru KIKUCHI Naoki MCGREEVY, Steven R. NILES, Daniel KUMAZAWA Terukazu

A Brief History of RIHN

- 1993 — Prime minister's advisory panel on the Global Environment in 21st Century launched
- 1995 — "On the Promotion of Global Environmental Studies" published by The Science Council of Japan
- 1997 — Report "On the core research institute for Global Environmental Studies" published by MEXT (Ministry of Education, Culture, Sports, Science and Technology)
- 2001 — RIHN Established on the Kyoto University campus
— HIDAKA Toshitaka, Director-General
- 2002 — RIHN relocated to the former Kasuga Primary School
— The 1st RIHN Forum
- 2004 — RIHN becomes a member of the National Institutes for the Humanities
— The 1st RIHN Public Seminar
- 2005 — The 1st RIHN Area Seminar
- 2006 — RIHN relocates to current facilities in northern Kyoto
— The 1st RIHN International Symposium
- 2007 — TACHIMOTO Narifumi appointed as the second Director-General
— The Center for Coordination, Promotion and Communication established
— RIHN-China established
— First research projects concluded
- 2008 — The 1st Collaborative Symposium with the International Research Center for Japanese Studies
- 2009 — The Earth Forum Kyoto and Earth Hall of Fame Kyoto Award established
- 2010 — Core Research Hub established
— The RIHN Encyclopedia of Global Environmental Studies published
- 2011 — RIHN 10 year anniversary and publication
— GEC-Japan network established
- 2013 — YASUNARI Tetsuzo appointed as the third Director-General
— The Center for Coordination, Promotion and Communication reorganized into the Center for Research Development and the Center for Research Promotion
- 2014 — Selected as Regional Center for Future Earth in Asia
- 2016 — 3 Research Programs and Core Program established and RIHN Center reorganized



Inter-University Research Institute Corporations National Institutes for the Humanities (NIHU)

<http://www.nihu.jp/e/>

NIHU is one of the four Inter-University Research Institute Corporations. It consists of six Inter-University Research Institutes involved in research in humanities. While each of the institutes is deeply involved in foundational research in their core field within Japan and internationally, the six institutes interact in a complementary fashion transcending the frameworks of previous scholarship. They also cooperate with research institutes in Japan and other countries in their attempt to identify and solve issues in contemporary society. NIHU promotes research that advances the human sciences as it also enriches human life.

Promotion of Research and Public Information Activities

In 2016, NIHU established two centers, the Center for Transdisciplinary Innovation and the Center for Information & Public Relations. The six member institutes, each serving as a center for nationwide research exchange, are accessible to the national research community, as they engage in multifaceted joint research projects, publish information to the world proactively, and promote and enhance the development of the next generation of scholars.

Center for Transdisciplinary Innovation (CTI)

The CTI promotes collaboration and cooperation within and between the six institutes, linking them to domestic and international universities, research institutes and local communities. It promotes the NIHU Transdisciplinary Project, an organizational joint research project that identifies contemporary issues, with the aim of creating a new value system for the human sciences.

NIHU Transdisciplinary Project

Institute-based Projects

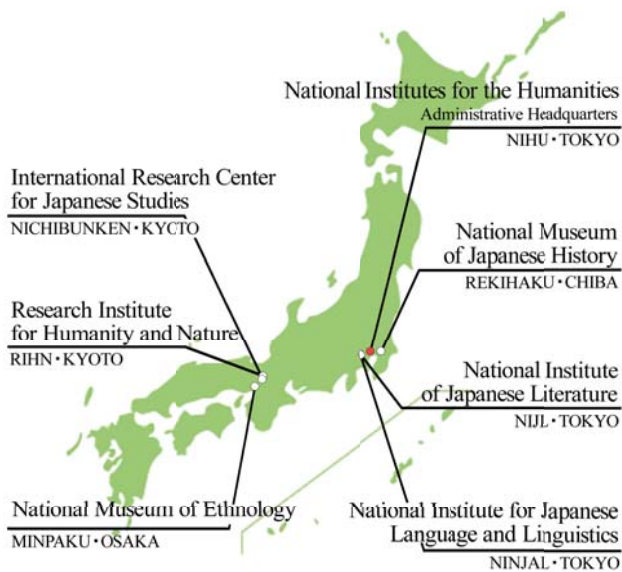
- REKIHAKU: Constructing Integrated Studies of Cultural and Research Resources, and Renovating Sharing Infrastructures of Research Resources in Japanese History and Culture
- NIJL: Project to Build an International Collaborative Research Network for Pre-modern Japanese Texts
- NINJAL: Diverse Language Resources and the Consolidation of Japanese-language Studies
- NICHIBUNKEN: Diachronic International Research into Mass Culture and the Construction of a New Image of Japan
- RIHN: Transformation towards Sustainable Futures in Complex Human-Nature Systems in Asia
- MINPAKU: Info-Forum Museum for Cultural Resources of the World

Multidisciplinary Collaborative Projects

- Reconstruction of Local Cultures after Disasters and under Social Change in the Japanese Archipelago
- Rethinking Eco-health in Asia
- Towards the Development of a New Field of Holistic Japanese Philology Based on Interdisciplinary Research

Network-based Projects

- NIHU Area Studies
 - Northeast Asia
 - Modern Middle East
 - South Asia
 - Contemporary China
- Japan-related Documents and Artifacts Held Overseas: NIHU International Collaborative Research and Utilization
 - Archives of the Dutch Factory in Hirado
 - Japan-related Overseas Artifacts and Documents of the 19th Century in Europe
 - Marega Collection Preserved in the Vatican Library
 - Japan-related Documents and Artifacts in North America



The NIHU Headquarters and six Inter-University Research Institutes



The four Inter-University Research Institute Corporations

Center for Information & Public Relations (CIP)

The CIP digitalizes comprehensive academic research resources related to the human sciences to promote the widespread use of the resources by universities and scholars all over the world. At the same time, it encourages sharing of research outcomes for the common good by strengthening two-way collaboration with society.

Public Information Activities

Resource Sharing nihu INT <http://int.nihu.jp/>

nihu INT is a database on research in the human sciences for the integrated retrieval of information resources from inside and outside NIHU

Public Information

Institutional Repositories and Research Achievements Database

Each institute publishes a repository for sharing research outcomes with the world. An integrated database of scholars, which provides information about scholars who belong to NIHU, is also in operation

English Resource Guide for Japanese studies and Humanities in Japan. http://www.nihu.jp/sougou/kyoyuka/japan_links/

NIHU magazine: This magazine provides information about NIHU's latest research activities and findings to the world

Collaborations with Society

NIHU Symposium: Information about research activities and findings is made widely available

26th: "The Middle East in Distress", Apr, 25, 2015

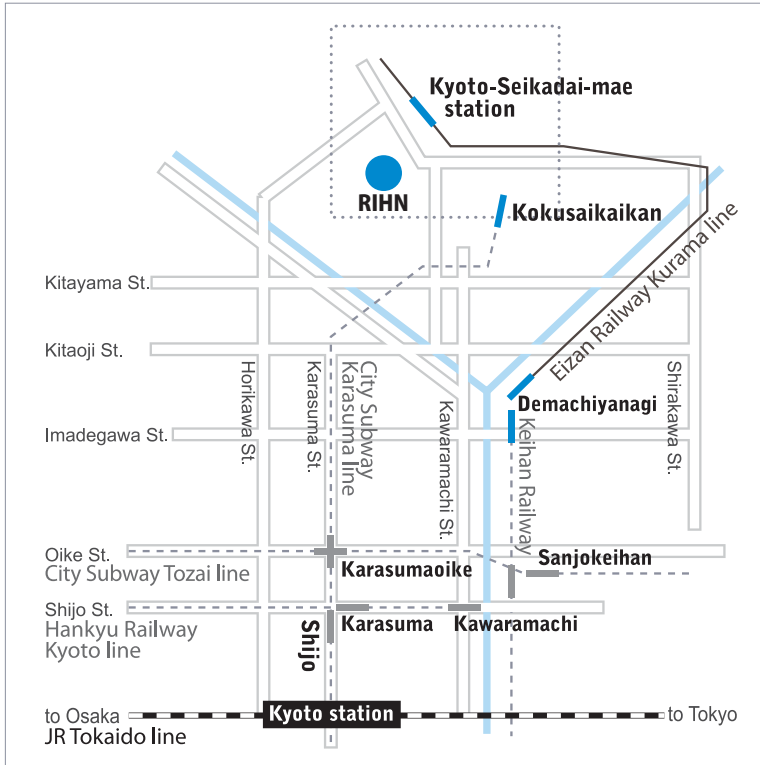
27th: "Siebold's Introduction of Japanese Culture: Commemorating the 150th Anniversary of His Death", Jan, 30, 2016

In FY 2016, the symposium will be held under the themes "Yokai Monsters" in June, and "Food" in November

Industry-Academia Collaborations

Promoting sharing of research outcomes for the common good by collaborating with industries such as the tourism industry

Access



By City Subway

From Kyoto Station, take the Karasuma Line to Kokusaikaikan Station (the last station), and transfer to Kyoto Bus.

By Kyoto Bus

From Kokusaikaikan Station, take bus No. 40, 50 or 52 to Chikyuken-mae.

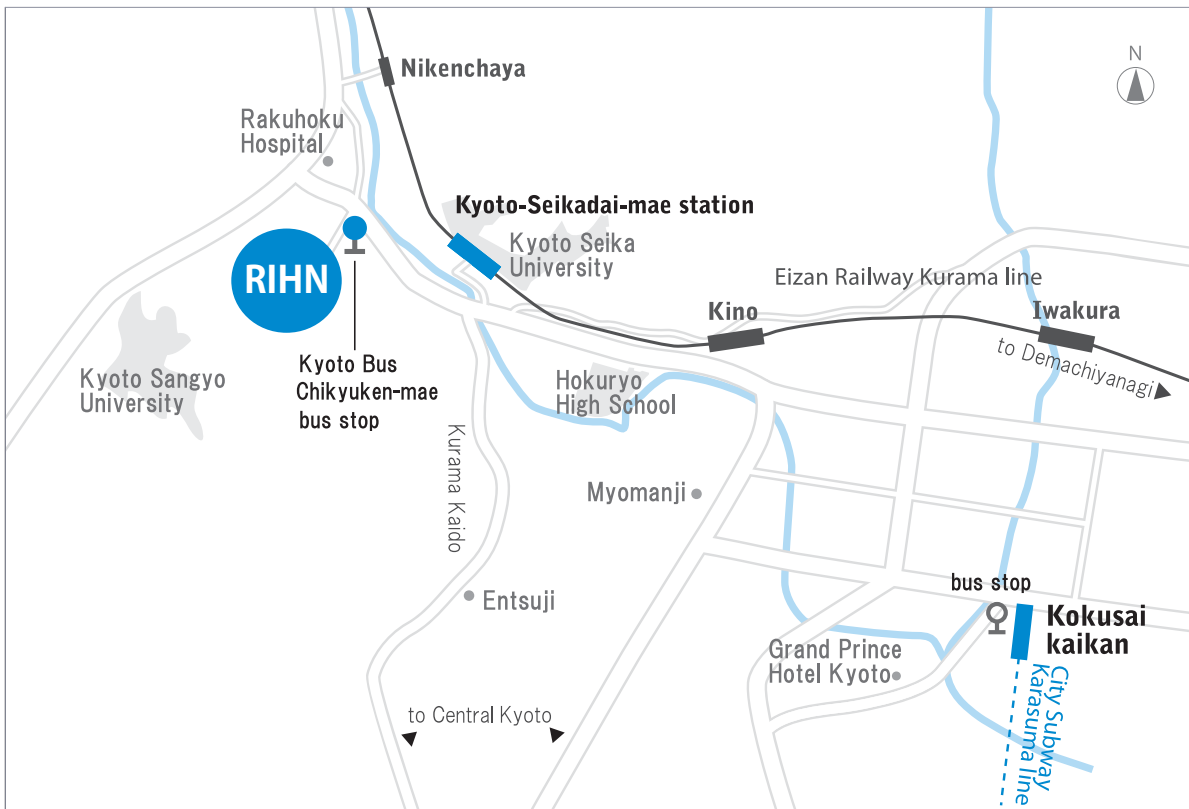
RIHN is at the base of the hill on your left.

By Eizan Railway

From Demachiyanagi Station in Kyoto City, take the Kurama Line.

Get off at Kyoto-Seikadai-mae Station.

RIHN is a 10-minute walk from the station.



RIHN Prospectus 2016-2017

Managing Editor: ABE Ken-ichi

Designed by OKAZAWA Rina

Front Cover photo:

A Roadside Market in Uluguru, Tanzania

Photo by TANAKA Ueru

Back Cover photo:

Ganesh Chaturthi, India

Photo by ENDO Hitoshi

Flying over RIHN in the autumn sky

Photo by WATANABE Kazuo



Inter-University Research Institute Corporation
National Institutes for the Humanities

Research Institute for Humanity and Nature

457-4 Motoyama, Kamigamo, Kita-ku, Kyoto
603-8047, JAPAN

TEL. +81-75-707-2100
FAX. +81-75-707-2106

kokusai@chikyu.ac.jp
www.chikyu.ac.jp

ISSN 2185-8055
June 2016

© RESEARCH INSTITUTE FOR HUMANITY AND NATURE

