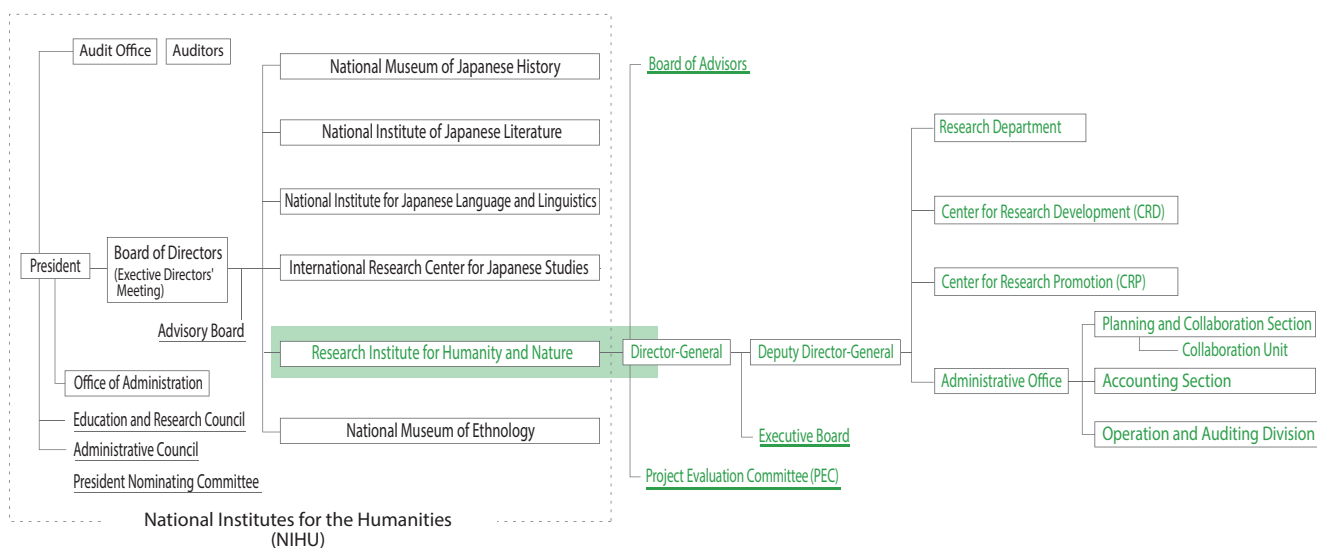


Administrative Structure



Financial Information

Segmental Financial Information (Fiscal Year 2013)

Operating Expenses

Category	Amount (Yen in thousands)
Operating Expenses	2,008,747
Inter-University/Joint Research	1,079,796
Outsourced Studies	101,480
Outsourced Operations	46,227
Personnel	781,242
General Management	142,340
Financial Expenses	36,203
Total Expenses	2,187,291

Operating Income

Category	Amount (Yen in thousands)
Subsidy for Operation	1,966,639
Contract Operations, etc.	46,184
Donations	8,087
Others	168,329
Total Earnings	2,189,241

Operational Balance 1,949

External Sources of Funding

(Fiscal Year 2013)

Category	Amount (Yen in thousands)
Fund for Promotion of Academic and Industrial Collaboration	42,767
Grants-in-Aids for Scientific Research	95,680
Donations for Research	15,679

* Fund for Promotion of Academic and Industrial Collaboration is the sum of contract research expenses.



Boards and Committees

*As of April, 2015

Board of Advisors

Oversees personnel, planning, administration and operation of the institute

<p>FUJIOKA Ichiro Professor Emeritus, Kyoto Sangyo University</p> <p>IKEYA Kazunobu Professor, Department of Cultural Research, National Museum of Ethnology</p> <p>KANZAWA Hiroshi Professor, Graduate School of Environmental Studies, Nagoya University</p> <p>KONO Yasuyuki Director, Center for Southeast Asian Studies, Kyoto University</p>	<p>NOE Keiichi President-appointed Extraordinary Professor, Institute of Liberal Arts and Sciences, Tohoku University</p> <p>OTSUKI Kyoichi Professor, Faculty of Agriculture, Kyushu University</p> <p>SUGIHARA Kaoru Senior Professor, National Graduate Institute for Policy Studies</p> <p>WASHITANI Izumi Professor, Faculty of Science and Engineering for Sustainable Society, Chuo University</p>	<p>HABU Junko Program Director, RIHN</p> <p>KUBOTA Jumpei Deputy Director-General, RIHN</p> <p>Director, CRD, RIHN</p> <p>MALLEE, Hein Program Director, RIHN</p> <p>NAKANO Takanori Director, CRP, RIHN</p> <p>NAKATSUKA Takeshi Program Director, RIHN</p> <p>SATO Tetsu Program Director, RIHN</p> <p>TANIGUCHI Makoto Program Director, RIHN</p>
--	---	--

Project Evaluation Committee (PEC)

External review of research project proposals

Domestic

<p>KOIKE Isao Professor Emeritus, the University of Tokyo / Former Inspector General, University of the Ryukyus</p> <p>KOIKE Toshio Professor, School of Engineering, The University of Tokyo</p> <p>MIYAZAKI Koji Professor, Research Institute for Languages and Cultures of Asia and Africa, Tokyo University of Foreign Studies</p> <p>MORIOKA Masahiro Professor, School of Humanities and Social Sciences, Osaka Prefecture University</p> <p>NAKAMURA Masami Science and Technology Journalist / Former Professor, Edogawa University</p> <p>NAKANISHI Hisae Professor, Graduate School of Global Studies, Doshisha University</p> <p>WADA Eitaro Professor Emeritus, Kyoto University/ Professor Emeritus, Research Institute for Humanity and Nature</p> <p>YASUOKA Yoshifumi Professor Emeritus, The University of Tokyo</p>
--

Overseas

<p>CHEN, Deliang Professor, Department of Earth Sciences, University of Gothenburg, Sweden</p> <p>CHUN Kyung-soo Professor, Department of Anthropology, Seoul National University, Korea</p> <p>KLEPPER, Gernot Professor, Kiel Institute for the World Economy, Germany</p> <p>LAURANCE, William F. Distinguished Research Professor and Australian Laureate, James Cook University, Australia</p> <p>MCDONALD, Anne Professor, Graduate School of Global Environmental Studies, Sophia University, Japan</p> <p>RANDALL, Roland Life Fellow, Girton College, University of Cambridge, UK</p> <p>SCHOLZ, Roland Professor Emeritus, Institute for Environmental Decisions, Swiss Federal Institute of Technology Zurich, Switzerland</p> <p>VAN DER LEEUW, Sander Foundation Professor, School of Sustainability, Arizona State University, USA</p>
--

Executive Board

Oversees administrative operation of the institute

<p>YASUNARI Tetsuzo Director-General</p> <p>KUBOTA Jumpei Deputy Director-General Director, CRD</p> <p>ABE Ken-ichi Head of Unit, CRP</p> <p>HABU Junko Program Director</p> <p>ISHII Reiichiro Head of Unit, CRD</p>	<p>MALLEE, Hein Program Director</p> <p>NAKANO Takanori Director, CRP</p> <p>NAKATSUKA Takeshi Program Director</p> <p>SATO Tetsu Program Director</p> <p>SEKINO Tatsuki Head of Unit, CRP</p>	<p>TANIGUCHI Makoto Program Director</p> <p>Head of Unit, CRD</p> <p>TAYASU Ichiro Head of Unit, CRP</p> <p>KAWANO Hiroshi Director, Administrative Office</p>
---	--	--

Advisor

TACHIMOTO Narifumi

Professors Emeritus

<p>NAKANISHI Masami</p> <p>WADA Eitaro</p> <p>HIDAKA Toshitaka</p> <p>NAKAWO Masayoshi</p>	<p>FUKUSHIMA Yoshihiro</p> <p>AKIMICHI Tomoya</p> <p>KAWABATA Zen'ichiro</p> <p>OSADA Toshiki</p>	<p>TACHIMOTO Narifumi</p> <p>SATO Yo-ichiro</p> <p>MOJI Kazuhiko</p> <p>KADA Ryohei</p>
--	---	---

RIHN STAFF

DIRECTOR-GENERAL

DEPUTY DIRECTOR-GENERAL (Planning and Coordination)

YASUNARI Tetsuzo

KUBOTA Jumpei

ADMINISTRATIVE OFFICE

ADMINISTRATIVE DIRECTOR KAWANO Hiroshi

PLANNING AND COLLABORATION SECTION

Head	HIRAISHI Noriyoshi
Deputy Head	IZUMORI Yoshihiro
General Affairs and Planning Subsection	
Head	BIVONE Junko
Chief	FUJIKAWA Takeshi
Clerk	KARIYA Midori
Personnel Subsection	
Chief	TANAKA Miika
Clerk	NAKAHJI Yu
Clerk	TANAKA Naoko
Research Planning Subsection	
Head	NARUI Akinori
Clerk	KOGISO Ayana

International Affairs Subsection	
Head	BIVONE Junko
Chief	FUJIKAWA Takeshi
Chief	ZENIZUKA Rie
Collaboration Unit	
Head	IZUMORI Yoshihiro
Cooperative Research Support Subunit	
Clerk	MASUDA Maho
Clerk	NAGATA Satoko
Public Relations Subunit	
Head	IZUMORI Yoshihiro
Clerk	INOUE Yuko

ACCOUNTING SECTION

Head	YOSHIDA Takashi
Deputy Head	TERAZAWA Kunihiro
Specialist	UEGAKI Yasuhiro
Financial Planning Subsection	
Head	MIYAUCHI Teruaki
Clerk	TSUJIMURA Hanako
Facility Management Subsection	
Head	UMEGAMI Tatsushi
Accounting and Procurement Subsection	
Head	SAKODA Fumiyo
Clerk	SAWAMURA Takahiro

OPERATION AND AUDITING DIVISION

Head	YOSHIDA Takashi
Auditing Subunit	
Head	YAMAMOTO Hiroshi

RESEARCH DEPARTMENT

Program Directors

HABU Junko
MALLEE, Hein
NAKATSUKA Takeshi
SATO Tetsu
TANIGUCHI Makoto

Professors

HABU Junko Environmental Anthropology, Historical Ecology, East Asian Archaeology
Hydrology
KUBOTA Jumpei Biogeochemistry, Paleoclimatology
NAKATSUKA Takeshi Local Environmental Studies,
SATO Tetsu Conservation Ecology
TANIGUCHI Makoto Hydrology

Associate Professors

ENDO Aiko Marine and Coastal Policy, Fishery Economics
ISHIKAWA Satoshi Conservation Ecology, Global Fisheries Science
KIKUCHI Naoki Environmental Sociology
OKUDA Noboru Ecological Science
RAMPISOLA, Dorotea Agnes Soil and Water Management
TANAKA Ueru Agricultural Studies

Visiting Professors

FUNAKAWA Shinya Environmental Agronomy
HIMIYAMA Yukio Geography
HIYAMA Tetsuya Ecohydrology
KANEKO Nobuhiro Soil Ecology
KANIE Norichika Earth System Governance
KUSAGO Takayoshi Action-based Development Studies
MATSUI Takeshi Nature in Cultural Perspectives
MURAMATSU Shin Architectural History, Urban History
NAKAGAMI Ken'ichi Environmental Economics and Policy
NAWATA Hiroshi Cultural Anthropology
YONEMOTO Shohei History and Philosophy of Science

Visiting Associate Professors

KAJITANI Shinji Philosophy
NAITO Daisuke Southeast Asian Area Study,
Political Ecology
OKUMIYA Kiyohito Field Medicine
SHIRAIWA Takayuki Glaciology
TERADA Masahiro History, Museum Anthropology
UCHIYAMA Junzo Environmental Archaeology,
Landscape History

Visiting Research Fellows

BOUTSON, Anukorn Coastal Fisheries
SAPTOMO, Satyanto Krido Irrigation and Water Management

Senior Project Researchers

C-09 KOTERA Akihiko Agro-Environmental Informatics
H-05 SANO Masaki Paleoclimatology

Project Researchers

C-09 HASHIMOTO (WATANABE) Satoko Soil Science
C-09 SEKINO Nobuyuki Environmental Sociology
D-05 OKAMOTO Yuki Agricultural Systems
D-05 WATANABE Kazuo Area Studies
D-06 ISHIDA Takuya Forest Environmental Science
D-06 KOBAYASHI Yuki Environmental Microbiology
R-07 ENDO Hitoshi Archaeology
R-07 ISHIYAMA Shun Cultural Anthropology
R-07 MIYAZAKI Hidetoshi Soil Science
R-07 SHIMIZU Takao Cultural Anthropology
R-07 TESHIROGI Koki Geography
R-08 MASUHARA Naoki Public Administration Studies, Energy Policy
R-08 OH Tomohiro Resource Governance
R-08 YAMADA Makoto Hydrology
R-09 ADACHI Kaori Archaeology

R-09 OISHI Takanori Ecological Anthropology
R-09 SUNANO Yui Ecological Anthropology
H-05 ITO Keisuke Japanese History
H-05 KAMATANI Kaoru History
H-05 XU Chenxi Paleoclimatology
E-05 KITAMURA Kenji Environment
E-05 MIKI Hiroshi Statistical Physics
E-05 TAKEMURA Shion Landscape Ecology
E-05 OMOTO Reiko Geography, Food Studies,
Social Network Analysis

Project Research Associates

C-09 KATO Hisaaki Policy Studies
C-09 KOYAMA Masami Evolutionary Ecology of Fish
D-05 KAKIOKA Ryo Fish Evolution and Systematics
D-05 HONMA Saki Ecology
D-05 MUTO Nozomu Coastal Oceanography
D-06 HIROSE Mikiko
D-06 UEHARA Yoshitoshi
R-07 KIHIRA Tomoe
R-08 HONDA Hisami
R-08 OKAMOTO Takako
R-08 TERAMOTO Shun
R-09 KATO Satoko
R-09 KOBAYASHI Yuki
R-09 TAKEHARA Mari
R-09 TOMII Noriko
H-05 LI Zhen Earth and Environmental Sciences
H-05 UCHIDA Rieko
H-05 YAMAMOTO Mami
E-05 FUKUSHIMA Atsuko
E-05 KITOLELEI, Jokim Veu Fisheries Resource Management

Center for Research Development (CRD)

DIRECTOR KUBOTA Jumpei

Heads of Units

Initiative Framework Unit KUBOTA Jumpei
Collaboration Nexus Unit ISHII Reichiro
Planning Unit TANIGUCHI Makoto
Future Earth Unit TANIGUCHI Makoto

Professors

KUBOTA Jumpei Hydrology
MALLEE, Hein Social Science

Associate Professors

ISHII Reichiro Theoretical Ecology
HANDOH Itsuki C. Earth Systems Science, Mathematical Modeling
TAKAGI Akira Fisheries Science, Molecular Ecology

Assistant Professors

MCGREEVY, Steven Robert Rural Sustainable Development
ONISHI Yuku Biogeography, Macroecology

Research Fellow, NIHU Center for Area Studies / RIHN Initiative for Chinese Environmental Issues (RIHN-China)

JIANG Hongwei Human Ecology

Center Research Associates

NISHIMURA Takeshi
OKA Masami

Center for Research Promotion (CRP)

DIRECTOR NAKANO Takanori

Heads of Units

Survey and Analysis Unit TAYASU Ichiro
Informatics Unit SEKINO Tatsuki
Communication and Production Unit ABE Ken-ichi

Professors

ABE Ken-ichi Ecological Anthropology
NAKANO Takanori Isotope Environmental Studies
TAYASU Ichiro Isotope Ecology, Isotope Environmental Science

Associate Professors

KONDO Yasuhisa Archaeology, GIS
NILES, Daniel Geography
SEKINO Tatsuki Information Science

Assistant Professors

KUMAZAWA Terukazu Environmental Planning, Regional Informatics
SHIN Kicheol Petrology, Geochemistry, Isotope Geology
TAKESHIMA Hirohiko Molecular Ecology, Evolutionary Genetics
YASUTOMI Natsuko Meteorology, Climatology

Center Researchers

KATO Yoshikazu Aquatic Ecology
YOSHIMIZU Chikage Biogeochemistry

Center Research Associates

MARES, Emmanuel Bernard Japanese Garden History
MATSUBAYASHI Jun Stable Isotope Ecology
OSADA Yutaka Ecology

Visiting Professor

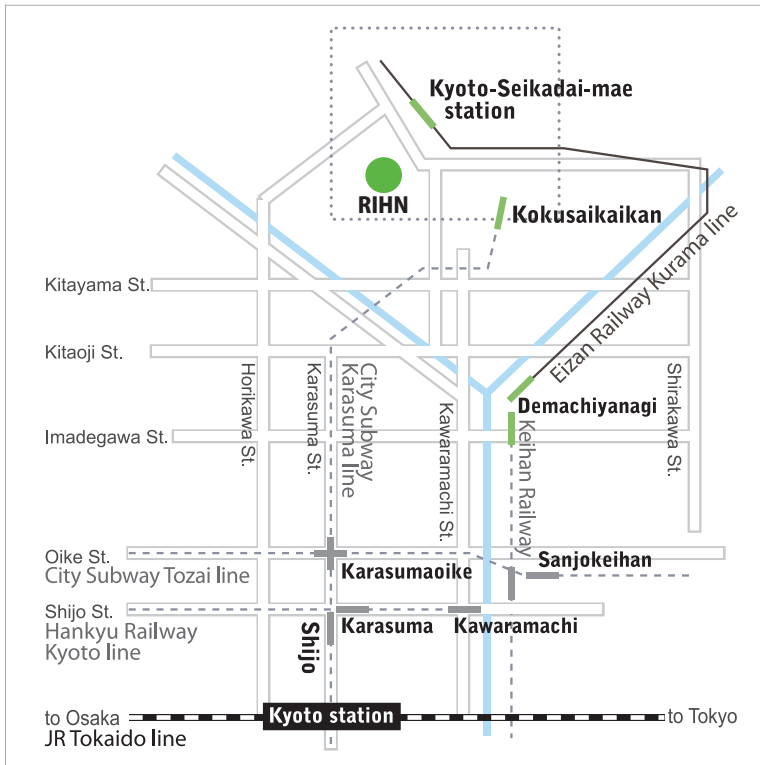
AKIMICHI Tomoya Integrated Area Study

A Brief History of RIHN

- 1993 — Prime minister’s advisory panel on the Global Environment in 21st Century launched
- 1995 — “On the Promotion of Global Environmental Studies” published by The Science Council of Japan
- 1997 — Report “On the core research institute for Global Environmental Studies” published by MEXT (Ministry of Education, Culture, Sports, Science and Technology)
- 2001 — RIHN Established on the Kyoto University campus
— HIDAKA Toshitaka, Director-General
- 2002 — RIHN relocated to the former Kasuga Primary School
— The 1st RIHN Forum
- 2004 — RIHN becomes a member of the National Institutes for the Humanities
— The 1st RIHN Public Seminar
- 2005 — The 1st RIHN Area Seminar
- 2006 — RIHN relocates to current facilities in northern Kyoto
— The 1st RIHN International Symposium
- 2007 — TACHIMOTO Narifumi appointed as the second Director-General
— The Center for Coordination, Promotion and Communication established
— RIHN-China established
— First research projects concluded
- 2008 — The 1st Collaborative Symposium with the International Research Center for Japanese Studies
- 2009 — The Earth Forum Kyoto and Earth Hall of Fame Kyoto Award established
- 2010 — Core Research Hub established
— The RIHN Encyclopedia of Global Environmental Studies published
- 2011 — RIHN 10 year anniversary and publication
— GEC-Japan network established
- 2013 — YASUNARI Tetsuzo appointed as the third Director-General
— The Center for Coordination, Promotion and Communication reorganized into the Center for Research Development and the Center for Research Promotion
- 2014 — Selected as Future Earth Regional Hub / Office for Asia



Access



By City Subway

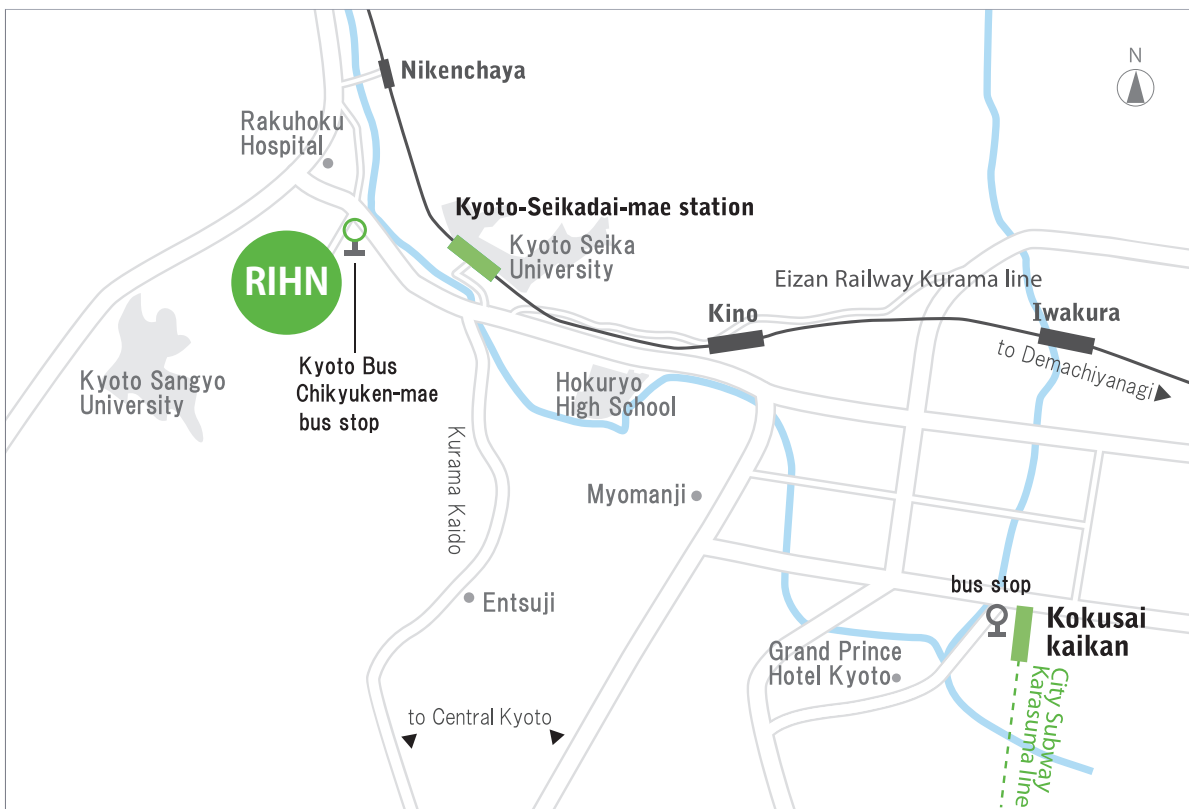
From Kyoto Station, take the Karasuma Line to Kokusaikaikan Station (the last station), and transfer to Kyoto Bus.

By Kyoto Bus

From Kokusaikaikan Station, take bus No. 40, 50 or 52 to Chikyuken-mae. RIHN is at the base of the hill on your left.

By Eizan Railway

From Demachiyanagi Station in Kyoto City, take the Kurama Line. Get off at Kyoto-Seikadai-mae Station. RIHN is a 10-minute walk from the station.



RIHN Prospectus 2015-2016

Managing Editor ABE Ken-ichi

Edited by Daniel NILES, TERADA Masahiro,
HABU Junko and Steven R. MCGREEVY

Designed by OKAZAWA Rina

Front Cover photo:

A man maintaining terraced paddy fields, Bali
Photo by SEKINO Nobuyuki

Back Cover photo:

Kids can make anything into a toy, Guinea
Photo by NAKAGAWA Chigusa

Dabbling at field work, Burkina Faso
Photo provided by SASAKI Yuku



Inter-University Research Institute Corporation
National Institutes for the Humanities
**Research Institute for
Humanity and Nature**

457-4 Motoyama, Kamigamo, Kita-ku, Kyoto
603-8047, JAPAN

TEL. +81-75-707-2100
FAX. +81-75-707-2106

kokusai@chikyu.ac.jp
www.chikyu.ac.jp

ISSN 2185-8055
April 2014

© RESEARCH INSTITUTE FOR HUMANITY AND NATURE

