

Comparison of Land Use in Seven Cities in Three Periods:

The maps in seven cities from 1920-1930 show different types of land used, which include residential, forests agricultural land, wasteland and grassland. In recent years, the house areas expanded to the suburbs, and areas for other land uses decreased.

TOKYO

OSAKA

SEOUL

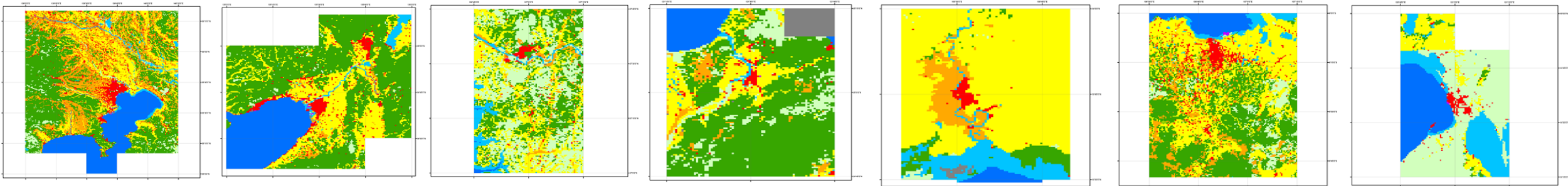
TAIPEI

BANGKOK

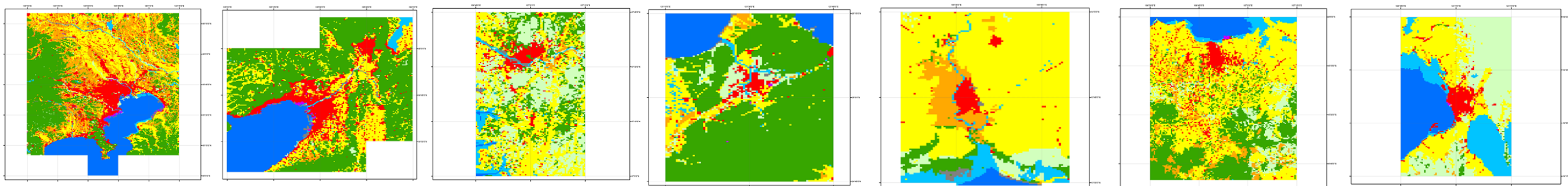
JAKARTA

MANILA

1
9
1
0
5
1
9
3
0



1
9
5
0
5
1
9
7
0



2
0
0
5

