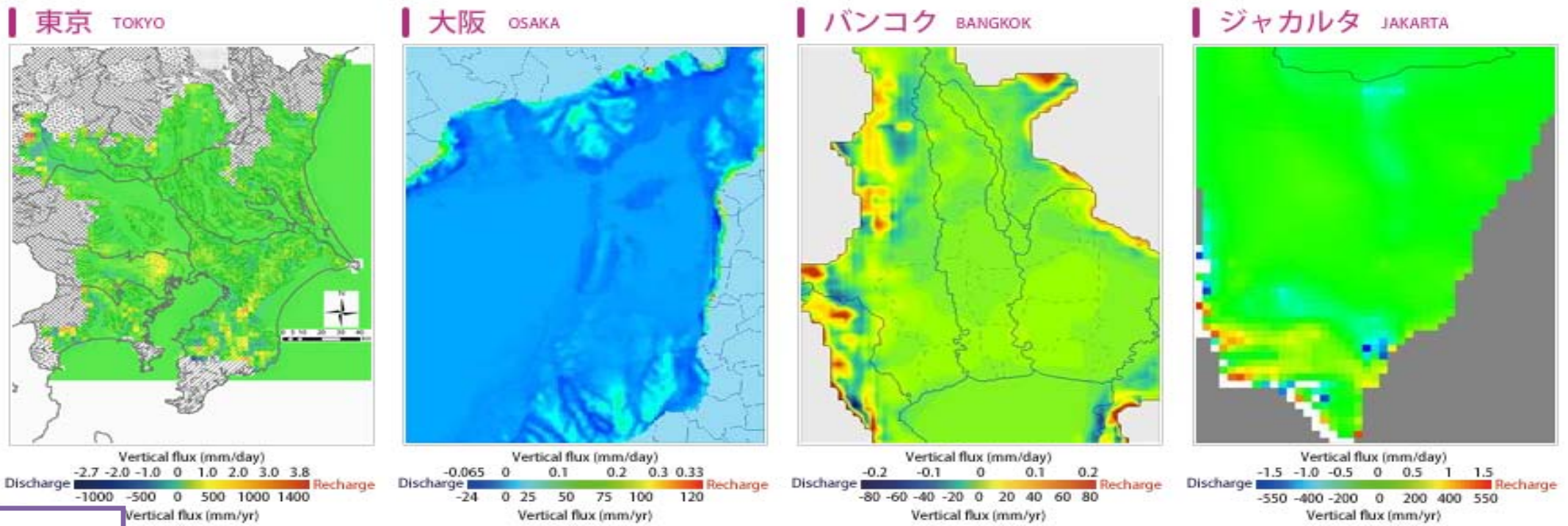
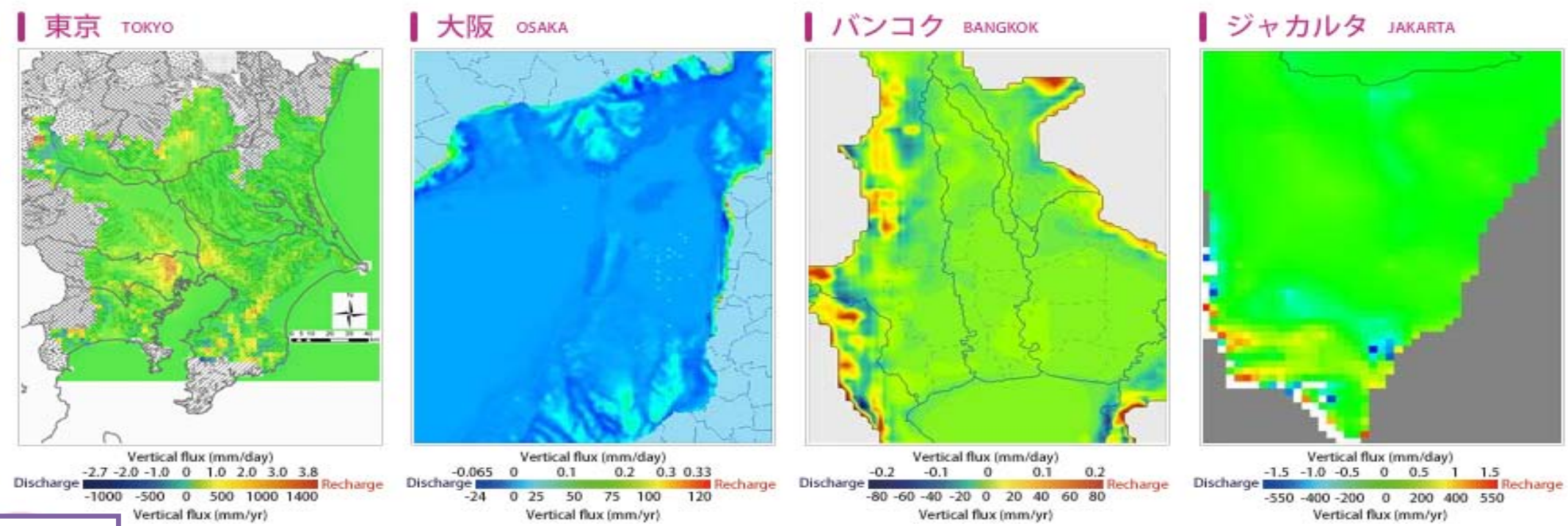


●Groundwater models in four cities

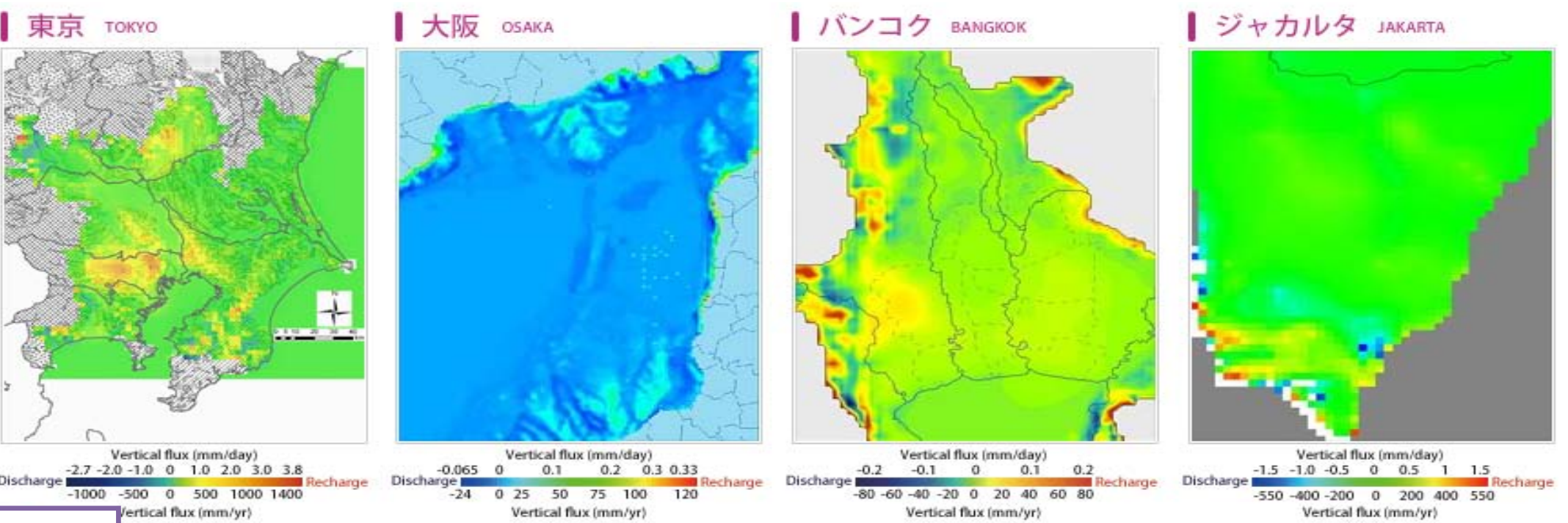
Groundwater recharge is a hydrologic process where rainwater moves downward from surface water to groundwater, which is related to groundwater abstraction. In Tokyo and Bangkok, the abstraction areas were moved from the urban area to the mountain areas, therefore groundwater recharge areas also moved. The substantial changes were not seen by the groundwater pumping restriction in Osaka. The groundwater abstraction increases at the urban area in Jakarta, and the groundwater recharge also increases



1950

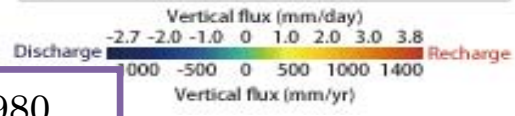
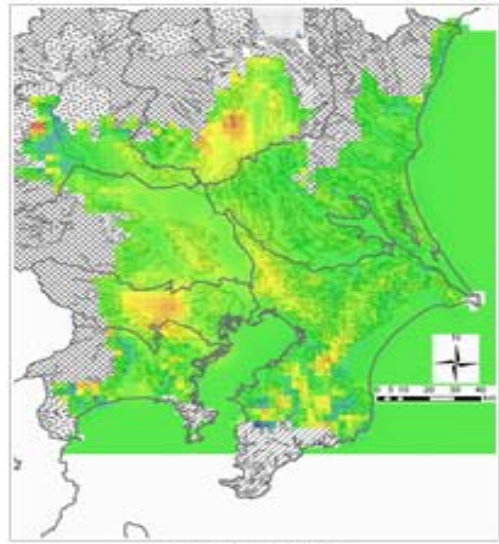


1960

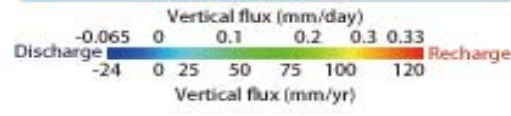
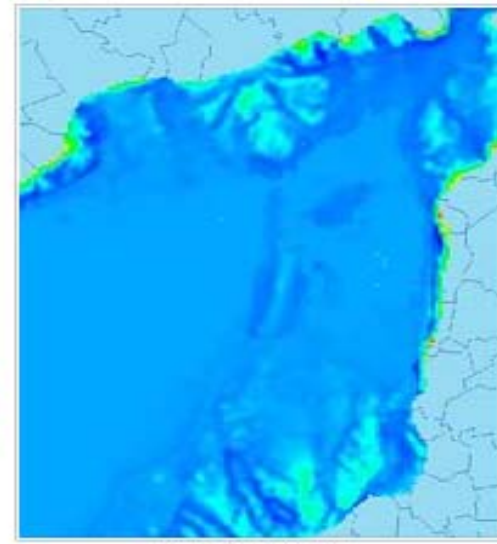


1970

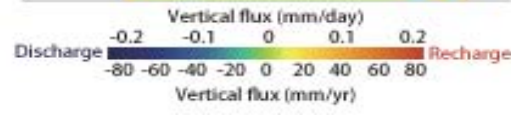
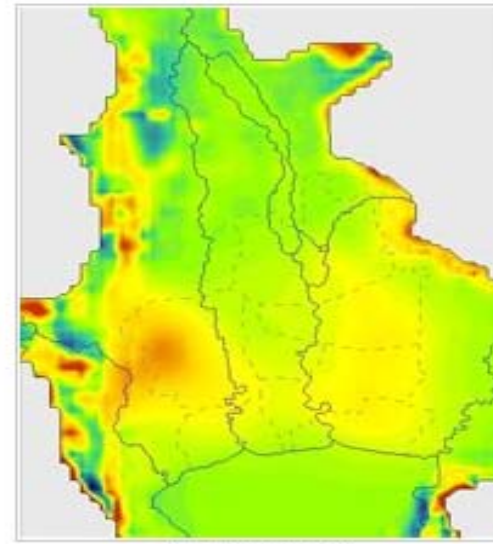
東京 TOKYO



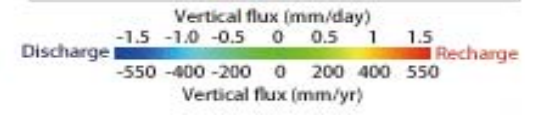
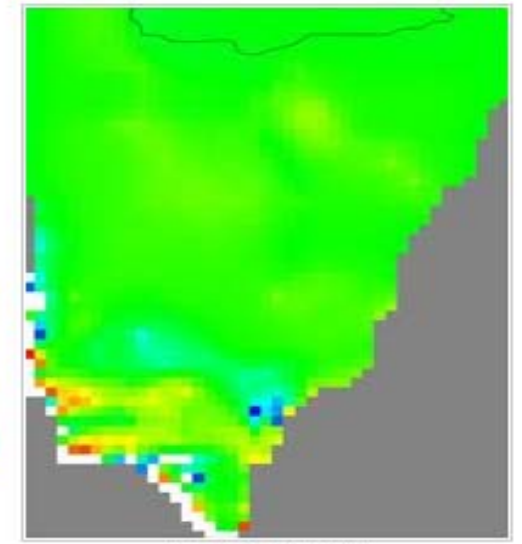
大阪 OSAKA



バンコク BANGKOK

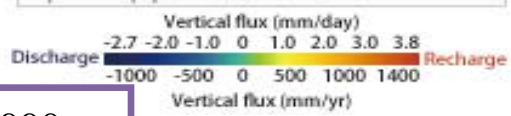
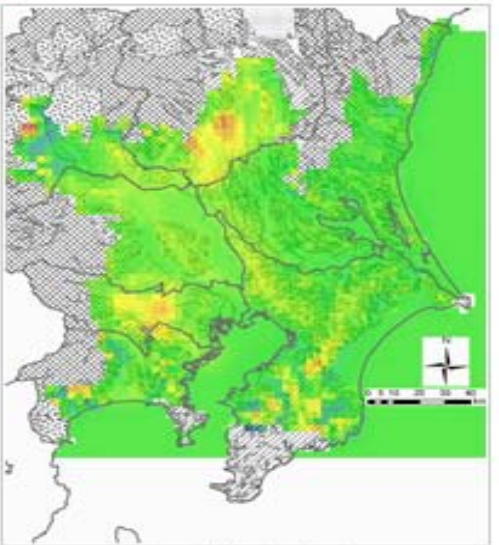


ジャカルタ JAKARTA

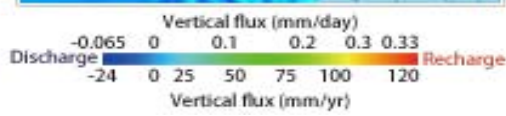
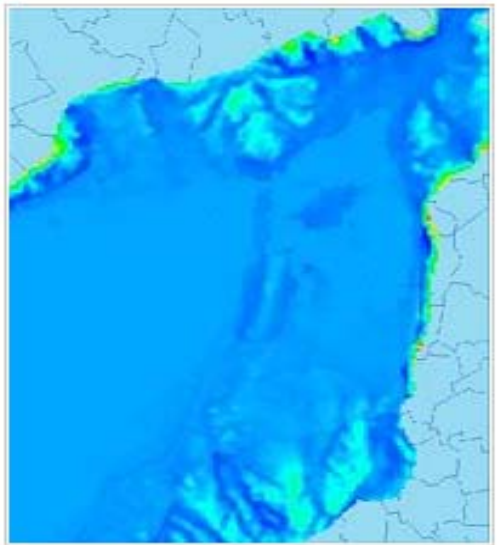


1980

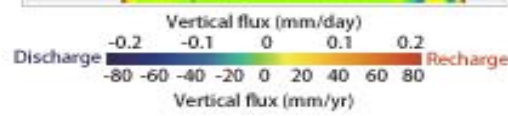
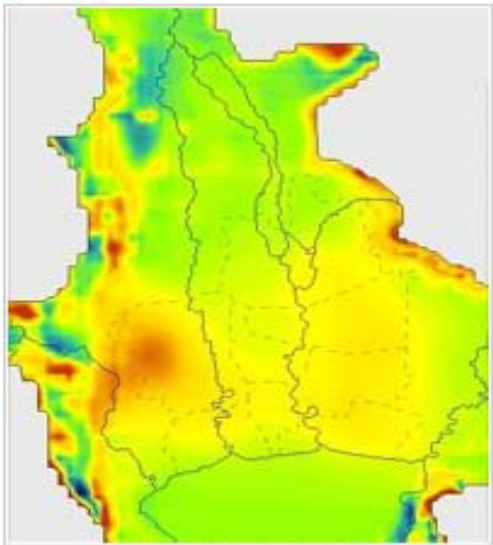
東京 TOKYO



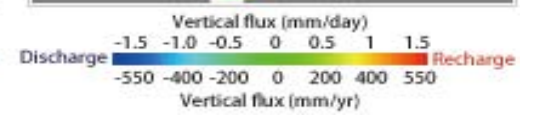
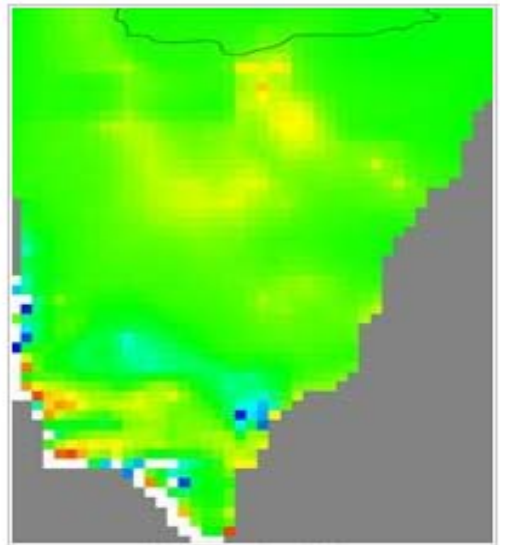
大阪 OSAKA



バンコク BANGKOK

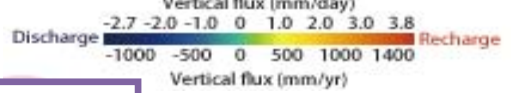
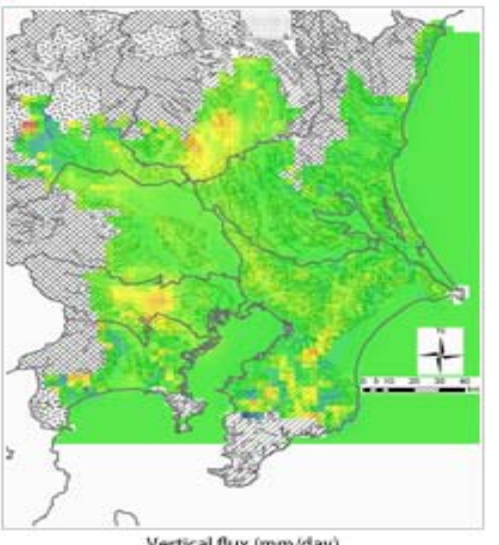


ジャカルタ JAKARTA

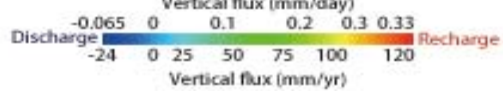
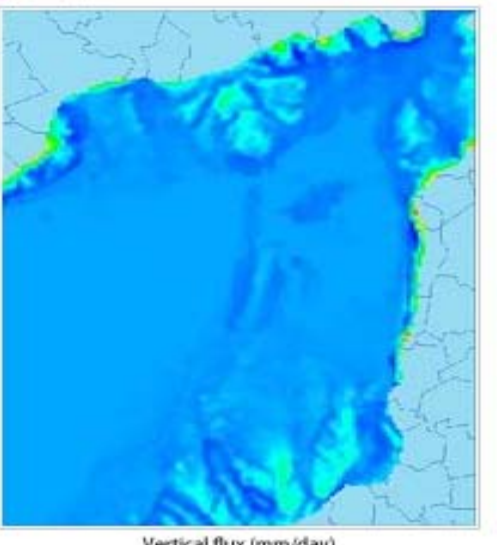


1990

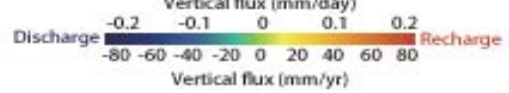
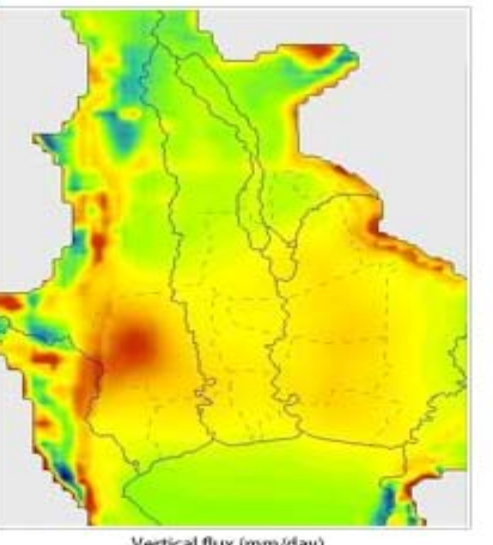
東京 TOKYO



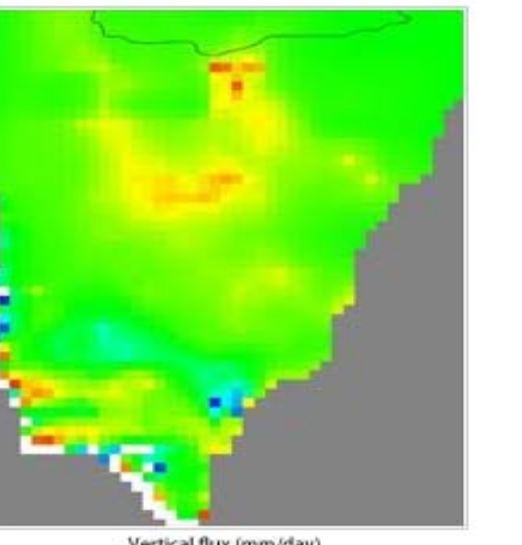
大阪 OSAKA



バンコク BANGKOK



ジャカルタ JAKARTA



2000