

2011/11/14
WS of the project C-09
RIHN, Kyoto



A RESEARCH PLAN FOR THE GAP REGION OF THE SOCIO-CULTURAL GROUP FOR THE BETTER USE OF WATER AS THE COMMONS AMONG THE LOCALS

Ulara TAMURA, Research Institute of Humanity and Nature
(Project Researcher/Anthropology)

The Objective of Socio-Cultural Approach

- To reveal the systems and its problems of the locals' resource management through the qualitative analysis of their practices related to land and water
- To analyse the logic of human relations and co-operation for the self-organized institutions and develop the indices for the analysis

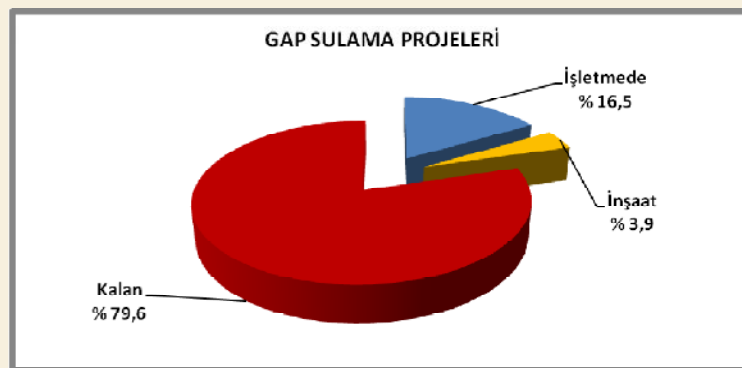
The current state and transformation processes of...

- Subsistence, landownership and farming systems
- Socio-economic data esp. of agriculture in the region
- Regulations, customs and systems of the resources management
- Ways of management of *commons*:
shared things, spaces, activities, work, info. etc.

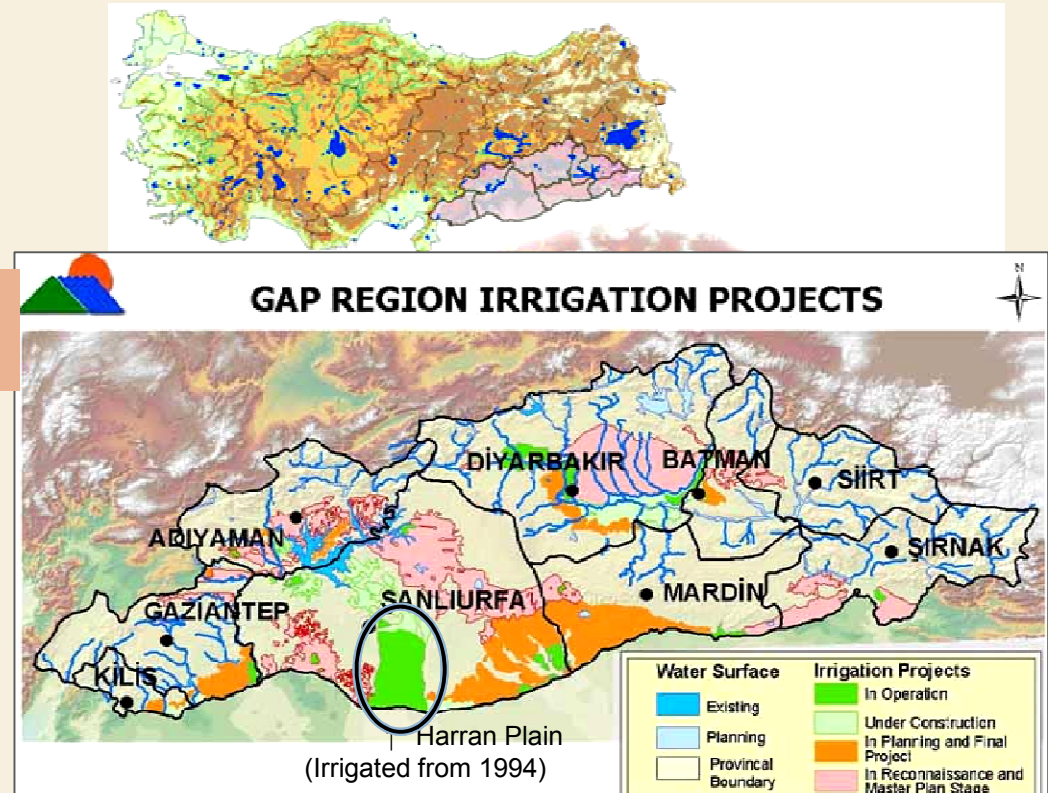
In the Case of GAP —A Hypothetical Plan1

- Characteristic Point: the gradual and ongoing process of the irrigation in the broad area (esp. in Harran Plain)

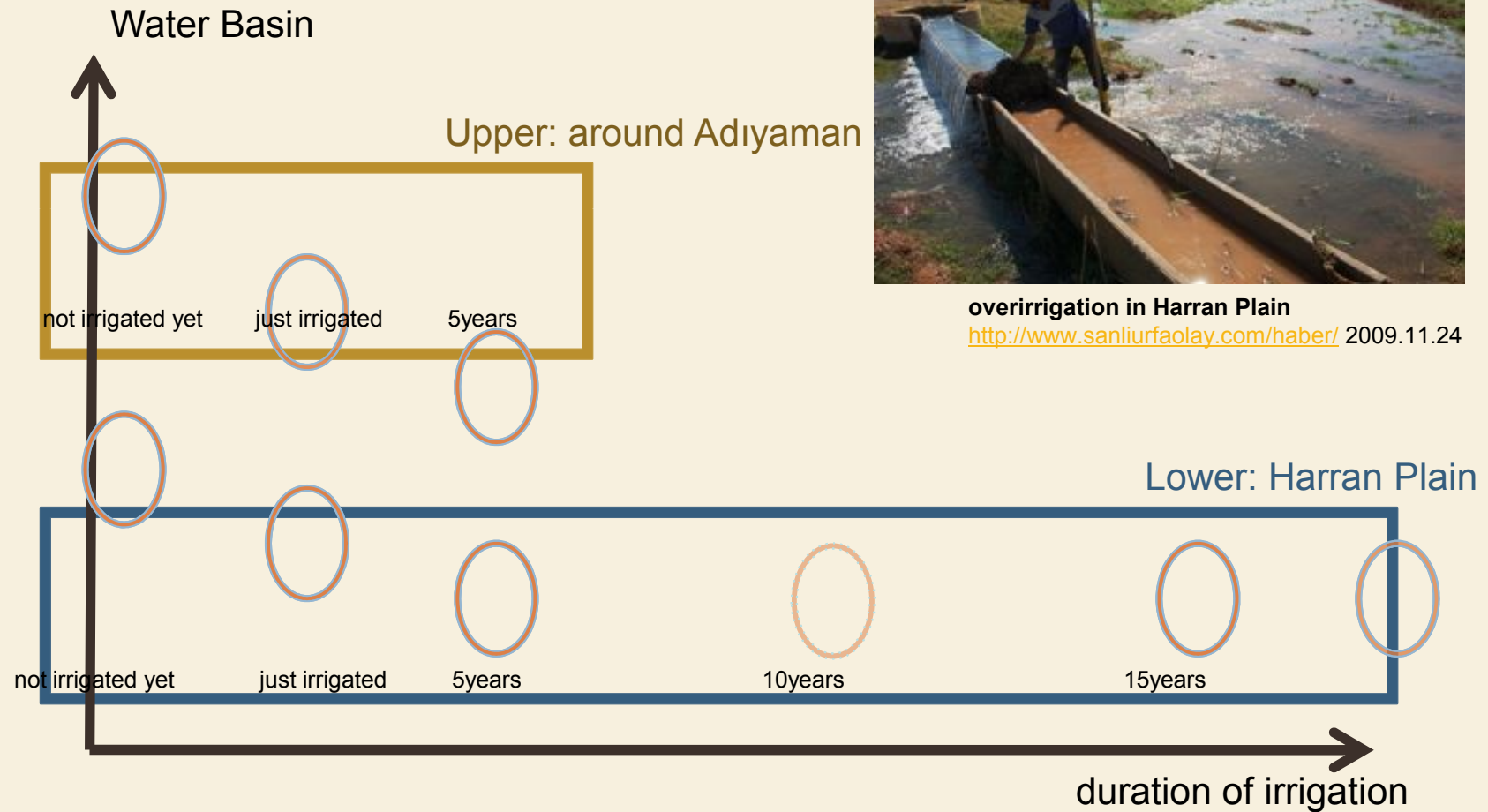
ideal for the assessment of the effect of irrigation on the life of the locals



GAP's latest situation report Dec. 2010

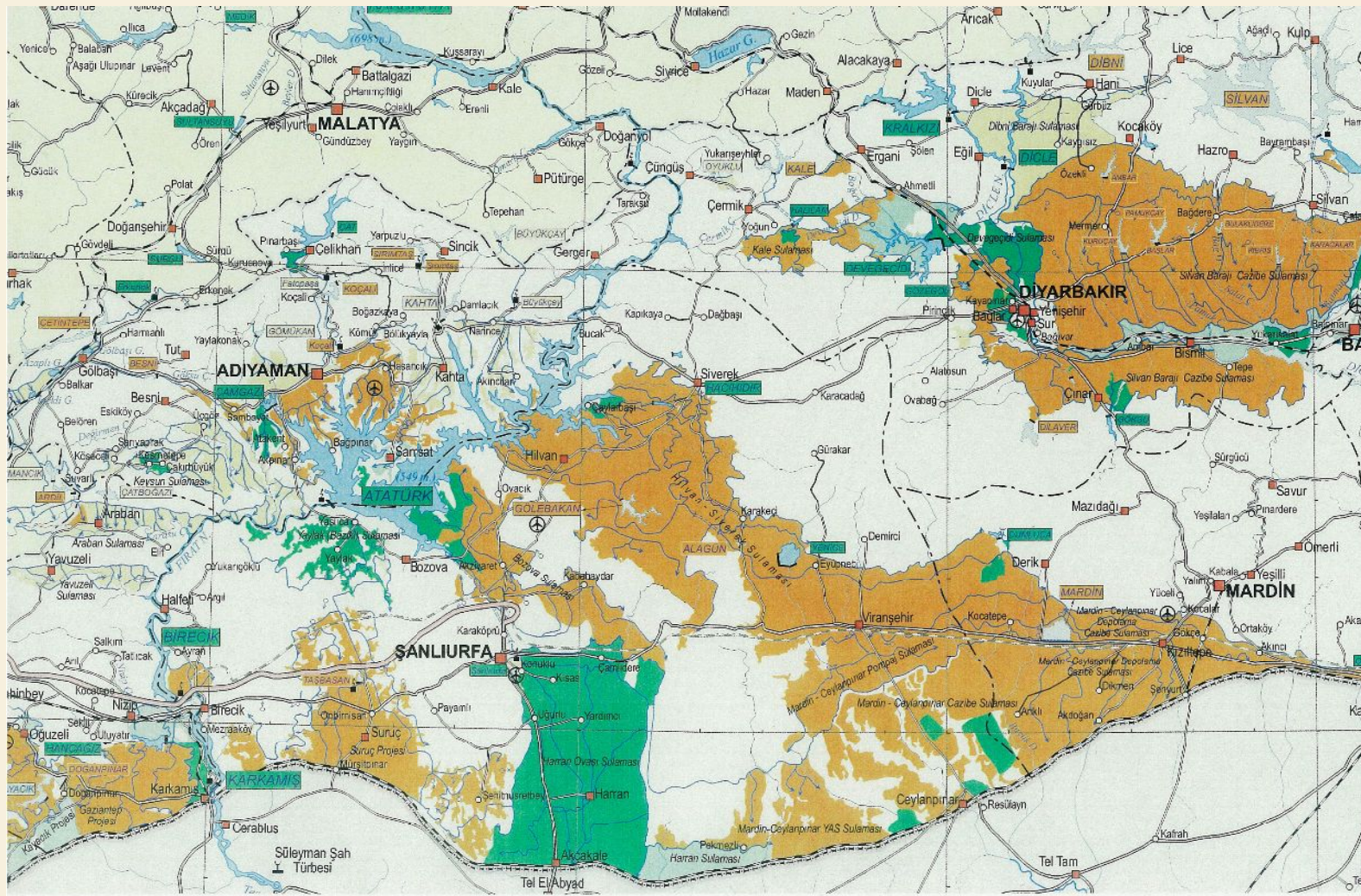


In the Case of GAP —A Hypothetical Plan2



overirrigation in Harran Plain
<http://www.sanliurfaolay.com/haber/> 2009.11.24

The Irrigated Areas in GAP



Mountain-side of the Dam



The Ataturk Dam



Around The Dam



The Upper Harran Plain



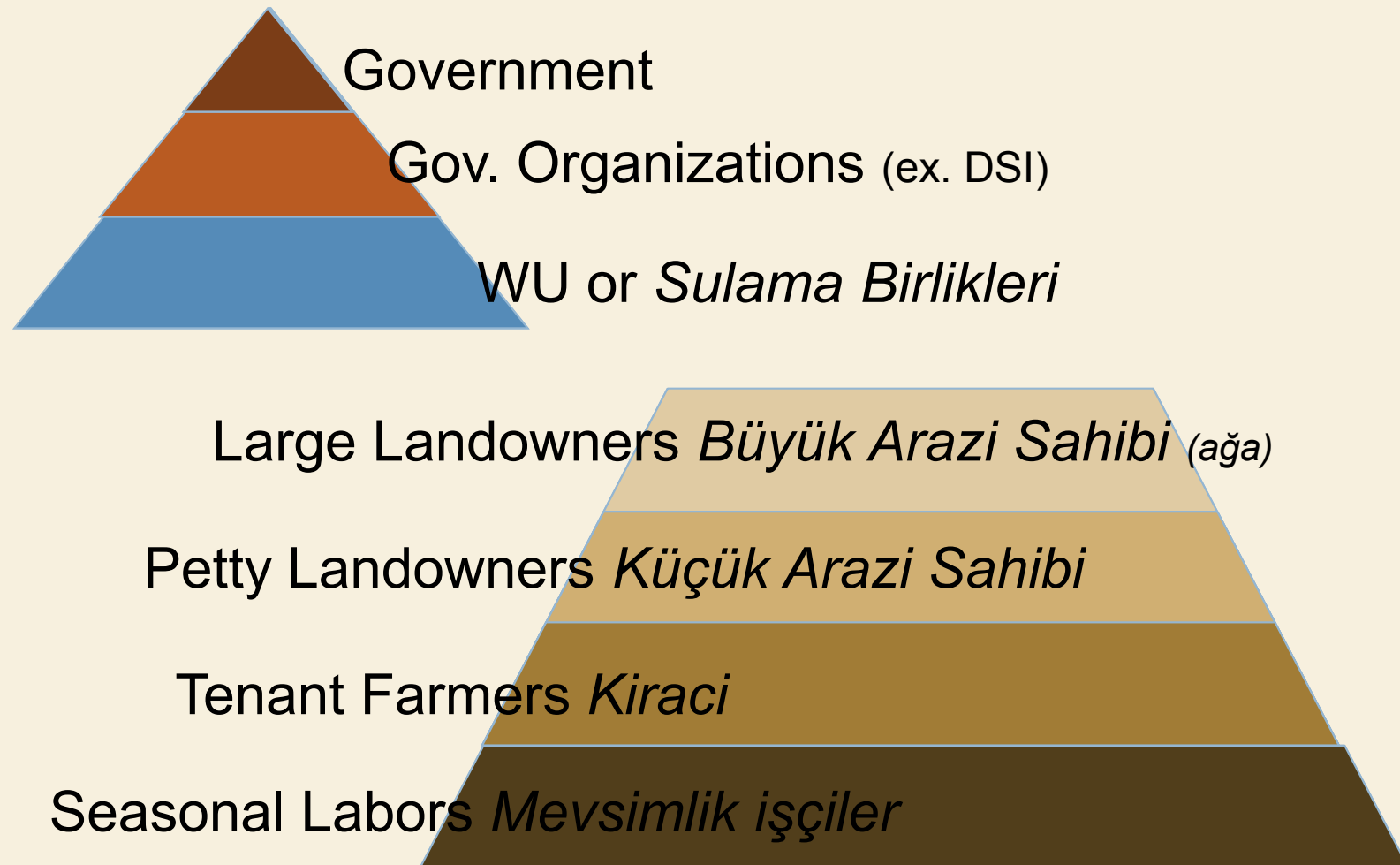
The Upper Harran Plain



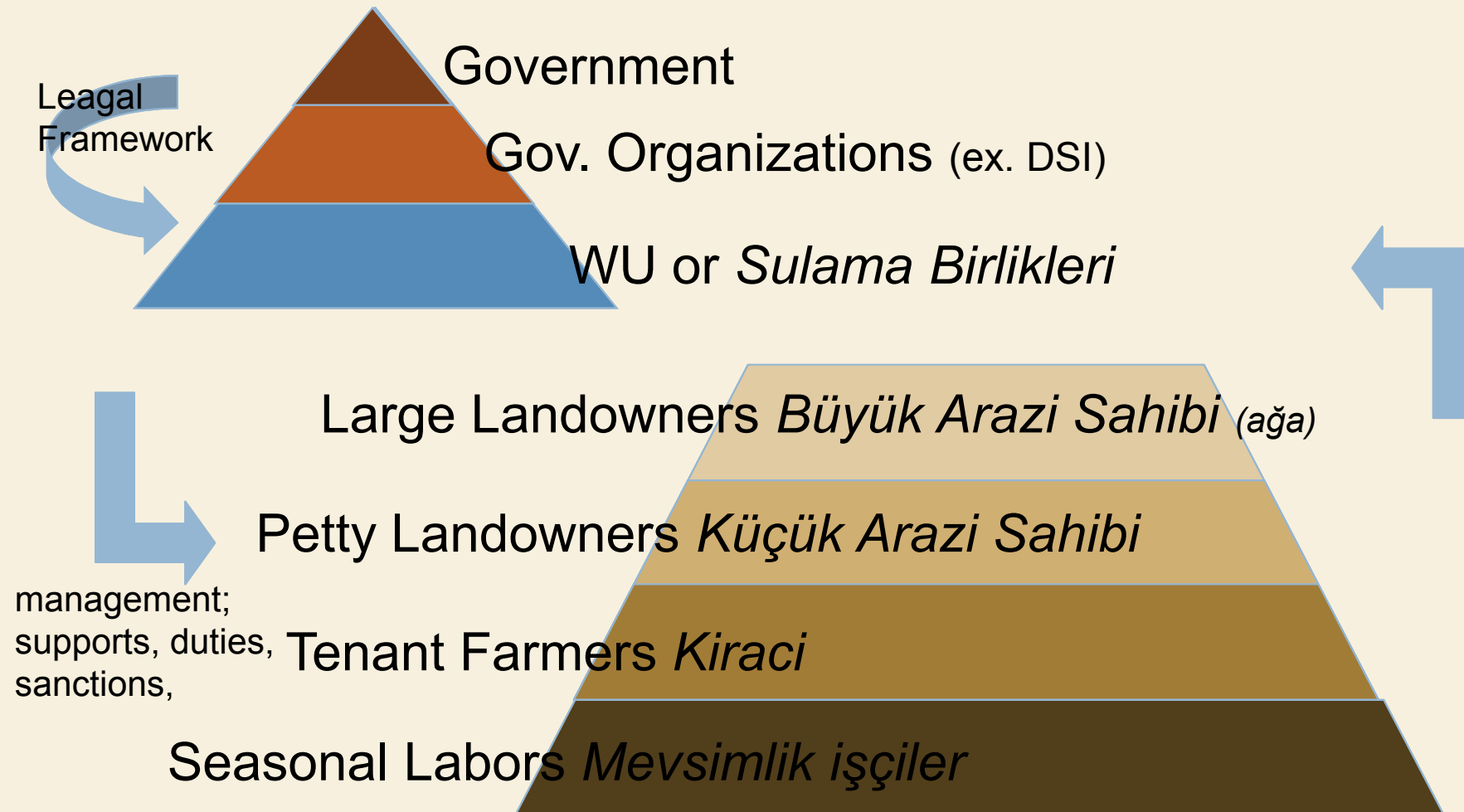
The Lower Harran Plain



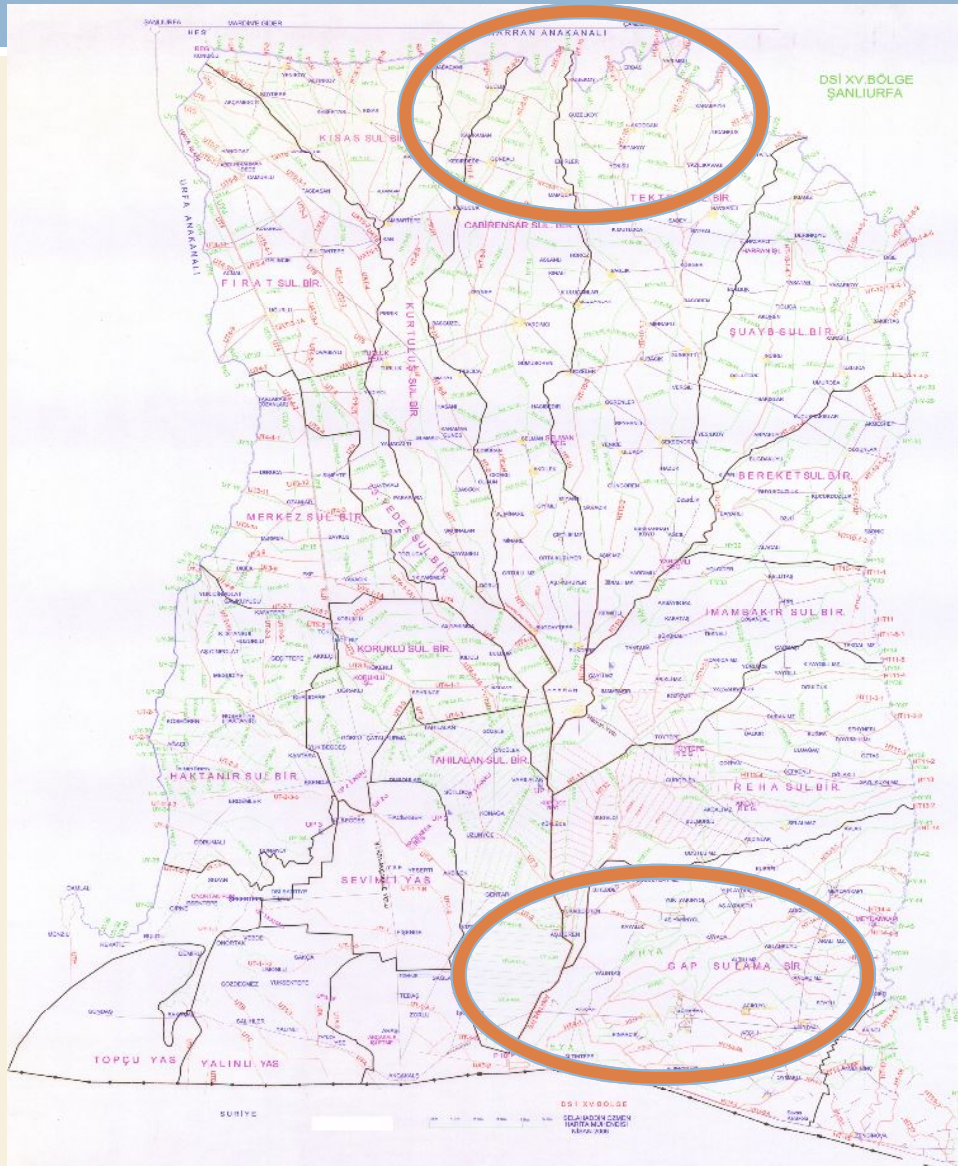
The Structure of Water Management



The Vertical Relationship between Off-farm and On-farm



The WUs in Harran Plain



S WU:

- 650 members
- 54 representatives
- 8700Ha
- 18 villages
- The head himself is the headman of the one of the village
- Established in '97
- Organized only by land holders. (Tenant Farmers' not yet involved)

(cf. Water Fee for Each Crops)

Birliğimize hazırlanan dekar başına sulama ücretleri ve ödeme tarihleri şöyledir.

Pamuk	: 16,00 TL
Hububat	: 10,00 TL
Mısır	: 13,00 TL
Susam	: 8,00 TL
Sebze	: 13,00 TL
Bağ-Bahçe	: 10,00 TL
Bostan	: 10,00 TL

The Structure of Water Management



- * The Ratio of Each
- * The Tendency of Attitudes to the Land
- * The Stability of the Relations between the Landowners and Tenant Farmers/ seasonal Labors
- * The Inter-relations between above elements

The Variations of Tenant Farming

- *Ortakçılık*
- *Yarıcılık*
- *Yüzde Otuz (30%)*
- *Kiracılık/ İcarcılık*

They differ in terms of the proportion of the share of the crops, workforce, the costs for farming, mechanical equipments, etc. between the landholders and the tenant farmers. There should be some tendencies of the stability of the relations which would effect the awareness of the “sustainability” in water and soil management.

An Example of Ad-hoc Management by the Each Bodies

DSI planned and constructed the irrigation canals in Harran Plain estimating 40% of cotton of the whole cultivated land.

Farmers are willing to plant the more high-profitable cash crops in irrigated land as much as possible.

Cotton covered almost 90% of the Plain in 2011 summer.

As a result, irrigation water shortage in the downstream emerged.

DSI planned to provide deep wells to the downstream farms in 2012.

The Problems in the GAP/ Turkey

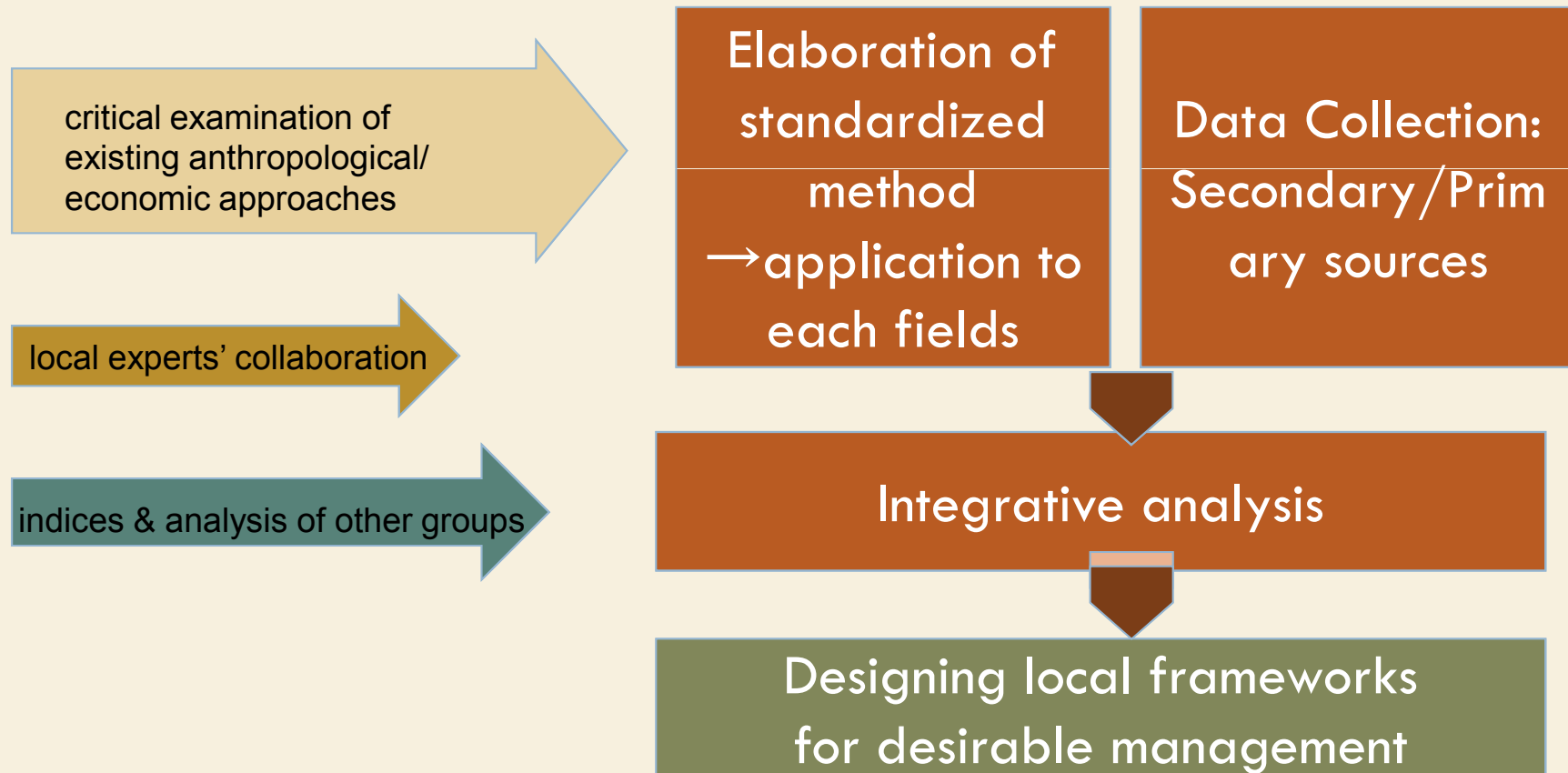
- Inadequate Management of Water and Land; excessive water use on the field, people's awareness of Inequality in general...
- Opportunists' Attitudes to the Land and Water
- The Locals' Dependent Tendency on the Government

SUGGESTIONS to the PROBLEMS

- Farmers' Education
- Indices for Evaluation; what is "good management"?
- To find the appropriate balance between legal restrictions and voluntary (not-obliged) activities

The Contribution of Anthropological Approach to the Project

- flexible or “omnivorous” ways of data collection and integration in accordance with the main aim and field condition = valid for things not easily measured and indeterminate, multidimensional forms of matters.



The 8 design principles proposed by Ostrom to be elaborated and integrated

- Elinor Ostrom's stance to commons management:
- 8 design principles for long-enduring self-organized systems (Ostrom 1990:90; 1992:68-76)

- 1. Clearly Defined Boundaries

- 2. Harmony between the rule of use of commons and local conditions

- 3. Collective-Choice Arrangements

- 4. Monitoring

- 5. Graduated Sanctions

- 6. Conflict Resolution Mechanisms

- 7. Minimal Recognition of Rights to Organize

- 8. Nested Enterprises

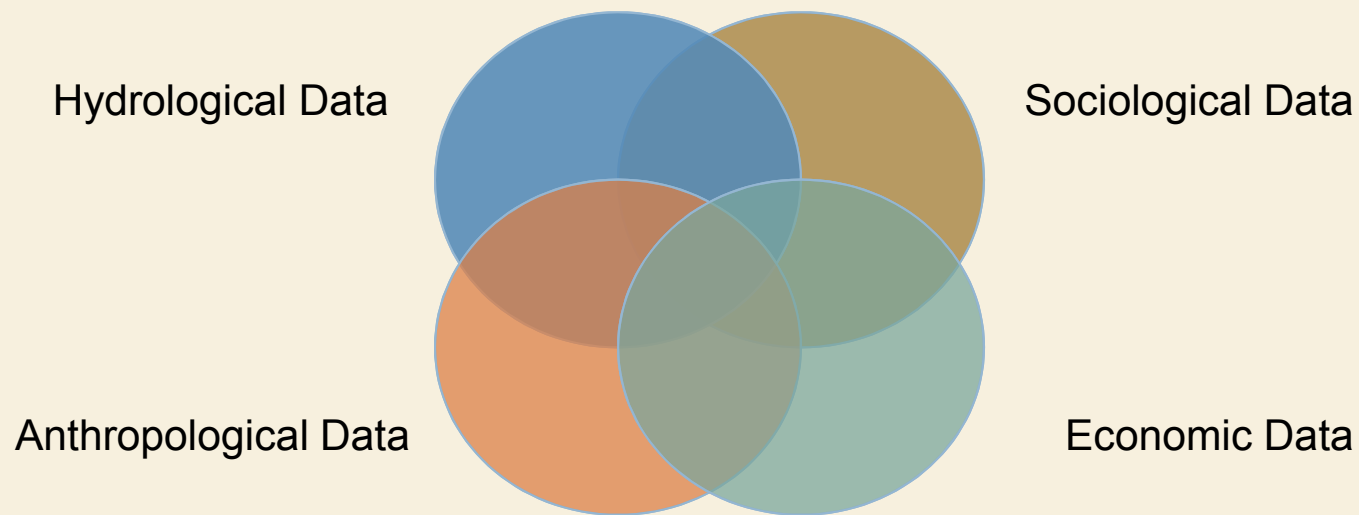
how environmentally “long-enduring” and “good”? and how can it be monitored?

how to harmonize the local environmental and socio-cultural condition? Can we utilize their “wisdom” in effective ways ?

how this kind of institutions could be self-organized in an existing community which has specific logic of human relations?

Data Collection and Integration

- 4 main subgroups and their indices for evaluation



wanted

institution theorists, agricultural economist, policy scientists, field-based sociologists/ geologists/ environmental sociologists/ economists,,,

Collaborators at the Moment

- Three Universities in the research areas;
Adıyaman, Harran, Çukurova
- Governmental Institutions; GAP administration, State Hydraulic Works (DSI)
- RIHN
- + Some other Turkish Researchers & Japanese Researchers on personal basis (esp. (agricultural) economists, Institutional theorists, Political scientists).

Thank you for your attention.
İlgileriniz için teşekkür ederim.

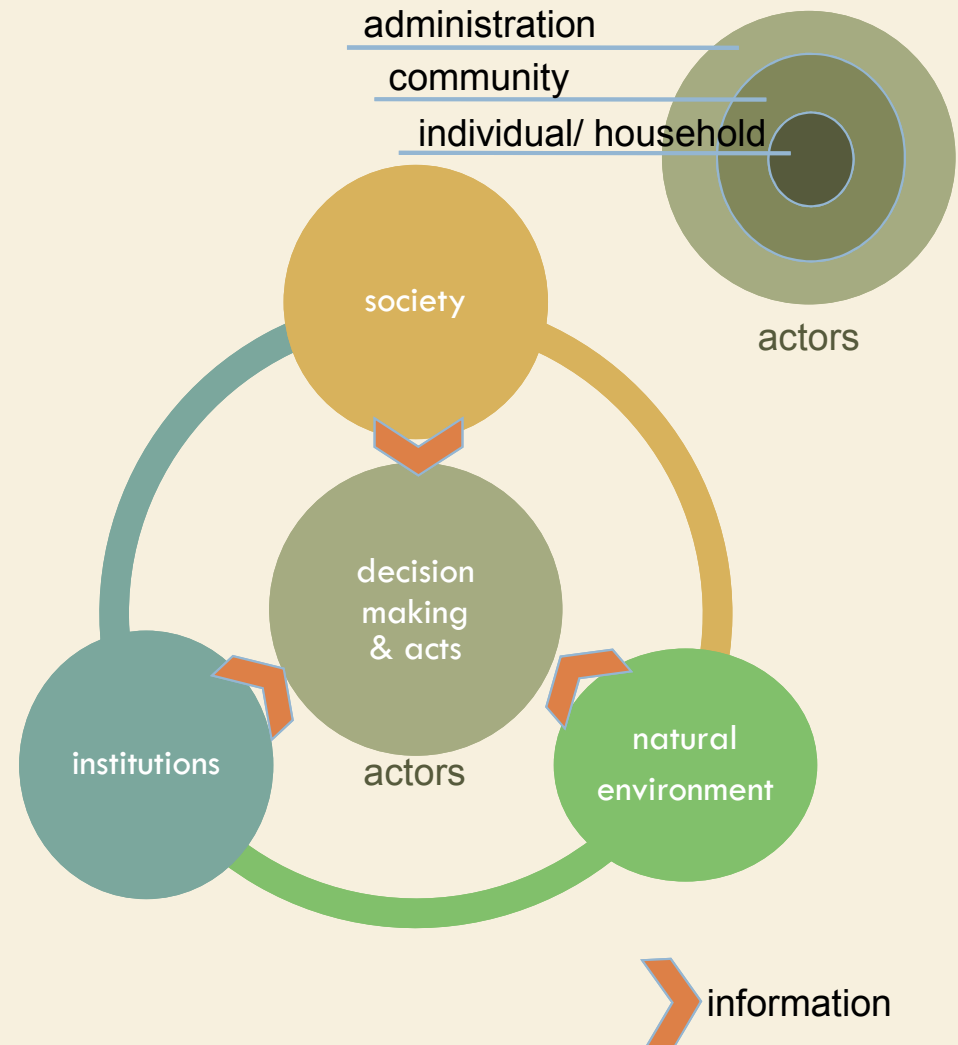


What Is Economic Anthropology?

—General Characteristics—

Defining the meaning of “economic” as the institutional process of humans’ interaction with the environment for the sake of survival and reproduction.

Commonly shared point of view: economy is “**embedded**” in society [Polanyi 1944].
cf) ⇔ *Economic Man* (by J. S. Mill)



In the Case of GAP —A Hypothetical Plan3

- Secondary source investigation
- Systematic/non-systematic interviews & observations

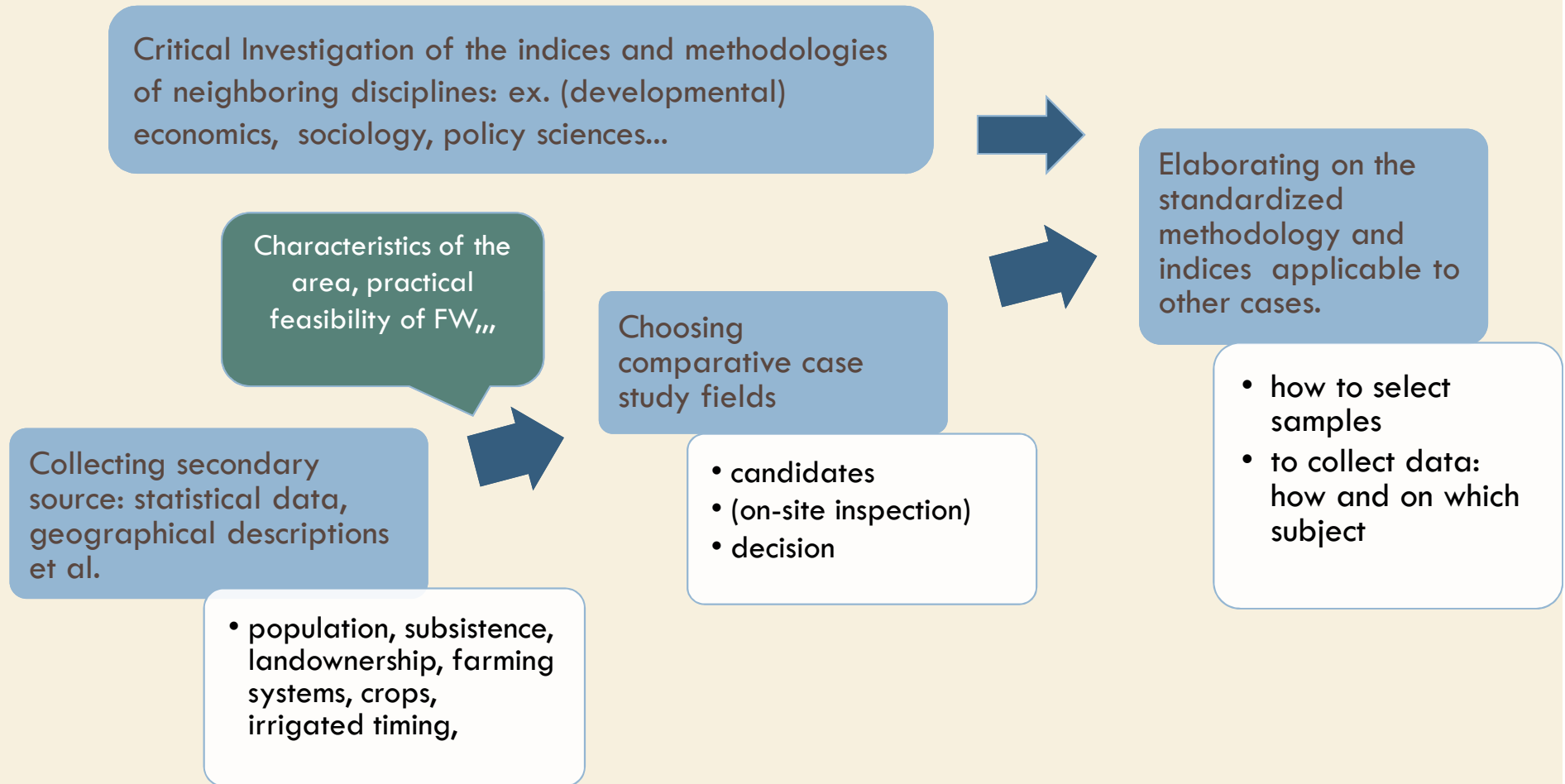
- Subsistence, landownership and farming systems
- Rules or customs of the resource management
- Ways of management of *commons*:
shared things, spaces, activities, work, info. etc.
- Taboos, beliefs, norms and rituals of water

- Make a list of *commons* in the community
- ex.) Who invested for the threshing machine? When? Before the machine, how did people thresh wheat? How many people are allowed to use it? Any changes? In what condition for the use? Any changes? Who is in charge of its maintenance? Were/ are there any conflicts over it?
- Observe the people's interactions around it
- What kind of common/uncommon features are seen between those *commons*.

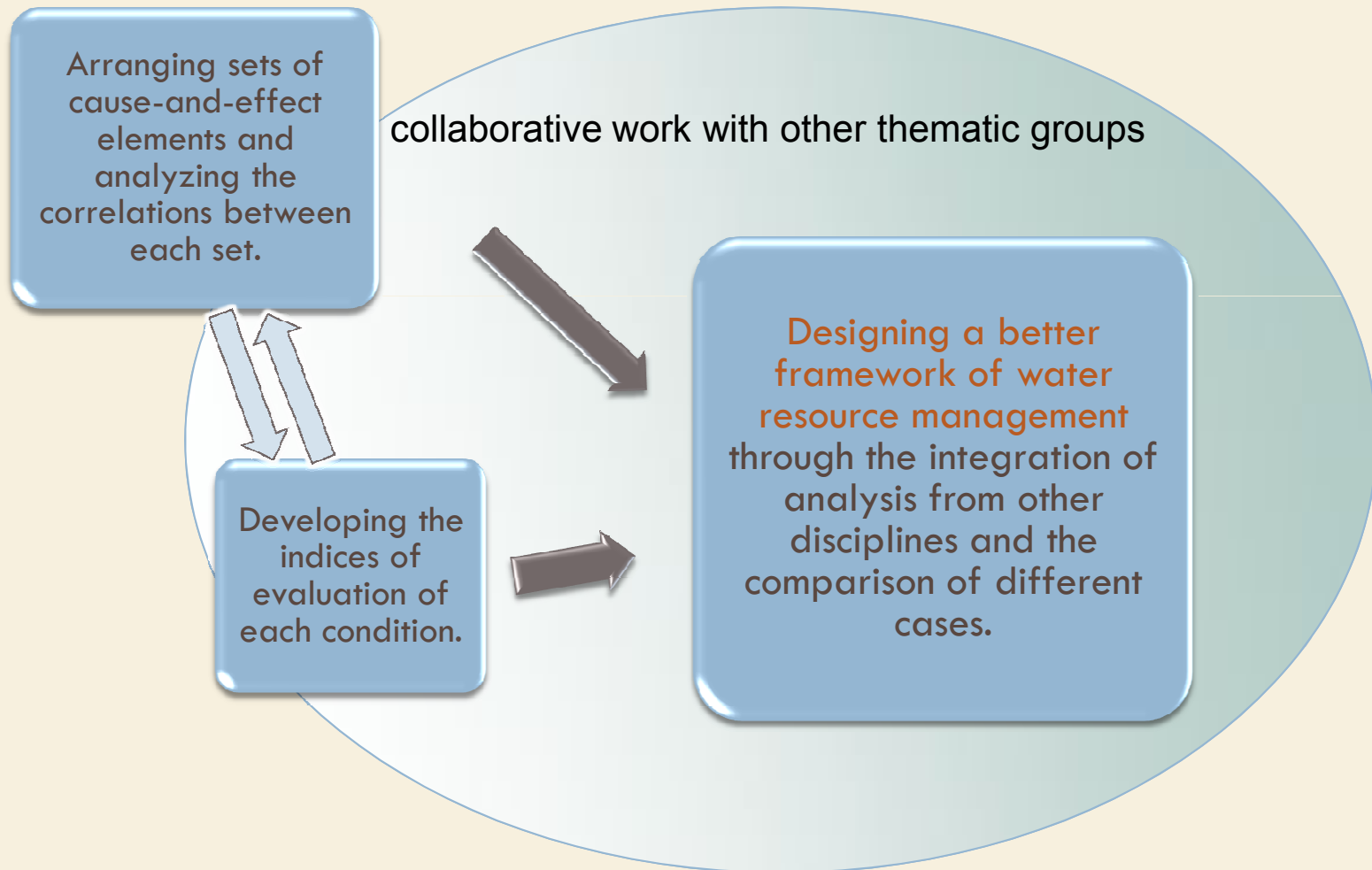
Their concept and practices of "common" which shall serve for designing the better local water management

How to Choose Fields and Collect Data?

—Possible Procedures in the Data Collecting—



How to Analyze and Integrate the Various Data? —A Simulation—



What is Anthropology?

- **METHODOLOGY:** Fieldwork by participatory observation
- **GENERAL AIM & REASON of EXISTENCE:**
Relativization of modernity
- **HOW? :** Pursuit of...
the cultural diversity in the state (on-field, concrete)
the universality in the structural level (theoretical, abstract)

A Possible Yearly Plan for the Anthropological Sub-group

